

Customer Information Sheet

DRAWING No.: P1113XX3

SHEET 2 OF 2

IF IN DOUBT - ASK

©

NOT TO SCALE

THIRD ANGLE PROJECTION

ALL DIMENSIONS IN mm

SPECIFICATIONS:

MATERIAL:

PLUNGER = P1113CA3, P1113CV3 = BRASS
 P1113SS3 = HIGH CARBON STEEL

BARREL = BRASS
 SPRING = SPRING STEEL

FINISH:

PLUNGER - P1113CA3/CV3 = 0.25µ MIN GOLD
 P1113SS3 = 2.00µ MIN NICKEL

ELECTRICAL:

CURRENT RATING = 2A MAX
 CONTACT RESISTANCE = 50mΩ MAX

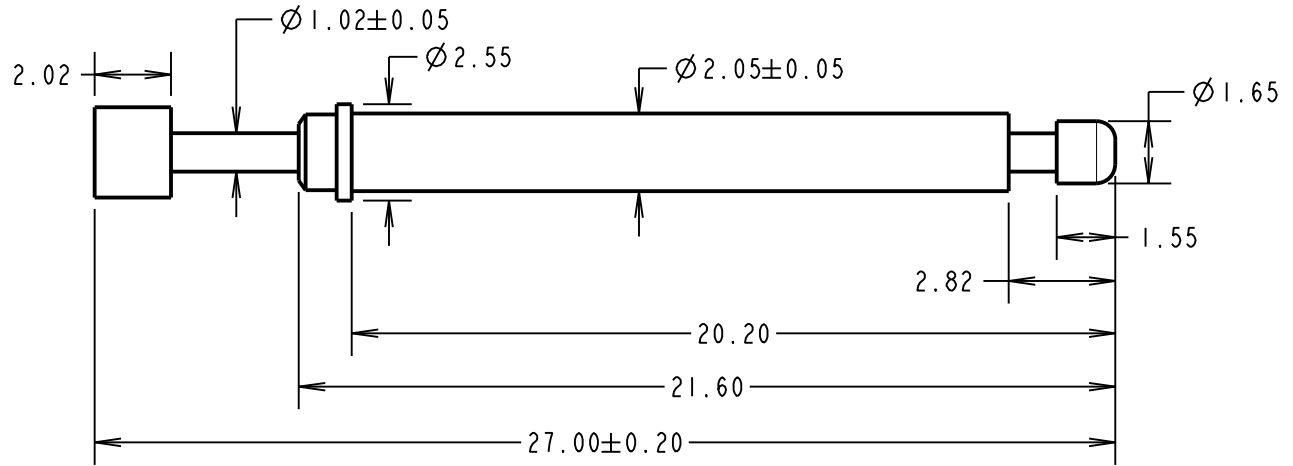
MECHANICAL:

DURABILITY = 1,000,000 CYCLES
 FULL TRAVEL = 3.18mm
 SPRING FORCE:

FULL TRAVEL = 0.75 ± 0.25N
 2.20mm TRAVEL = 0.54 ± 0.15N

ENVIRONMENTAL:

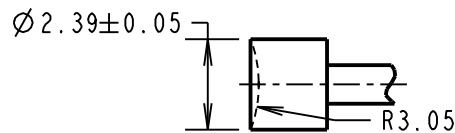
TEMPERATURE RANGE = -40°C TO +85°C



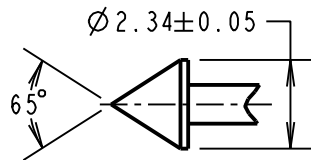
NOTES:

1. RECOMMENDED CLEARANCE HOLE SIZE = Ø2.20 ± 0.05mm.
 RECOMMENDED INTERFERENCE HOLE SIZE = Ø2.00mm.
2. SUITABLE FOR A MINIMUM DISTANCE BETWEEN CENTRES OF 3.00mm.
3. THIS PART IS SIMILAR TO P1113XX2 APART FROM POWER RATING THAT WAS 5A MAX AND MATERIAL / FINISH OF SPRING AND PLUNGER VARIANT P1113SS3.

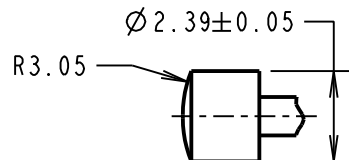
PROBE HEAD VARIANTS



CONCAVE RADIUS HEAD
P1113CA3



CONVEX HEAD
P1113SS3



CONVEX RADIUS HEAD
P1113CV3

ORDER CODE:

P1113XX3

PROBE HEAD _____
 VARIANT (SEE BELOW)

SB	4	17.08.11	11419
NAME	ISS.	DATE	C/NOTE
APPROVED: S.BENNETT			
CHECKED: S.FLOWER			
DRAWN: M. G. PLESTED			
CUSTOMER REF.:			
ASSEMBLY DRG:			

HARWIN

HARWIN USA
 TEL: 603 893 5376
 FAX: 603 893 5396
 mis@harwin.com

HARWIN Europe (UK)
 TEL: 023 9231 4545
 FAX: 023 9231 4590
 mis@harwin.co.uk

HARWIN Asia
 TEL: +65 6 779 4909
 FAX: +65 6 779 3868
 mis@harwin.com.sg

THIS DRAWING AND ANY INFORMATION OR DESCRIPTIVE MATTER SET OUT HEREON ARE CONFIDENTIAL AND COPYRIGHT PROPERTY OF THE HARWIN GROUP AND MUST NOT BE DISCLOSED, LOANED, COPIED OR USED FOR MANUFACTURING, TENDERING OR FOR ANY OTHER PURPOSE WITHOUT THEIR WRITTEN PERMISSION.

TOLERANCES
 X. = ±1mm
 X.X = ±0.25mm
 X.XX = ±0.10mm
 X.XXX = ±0.01mm
 ANGLES = ±5°
 UNLESS STATED

MATERIAL:

SEE ABOVE

FINISH: SEE ABOVE

S/AREA: mm²

TITLE:

3.00mm MIN. CENTRE
 ONE-PIECE SPRING PROBE

DRAWING NUMBER:

P1113XX3

SHT
 2 OF 2