

Customer Information Sheet

DRAWING No.: R30-620XXX

SHEET 2 OF 2

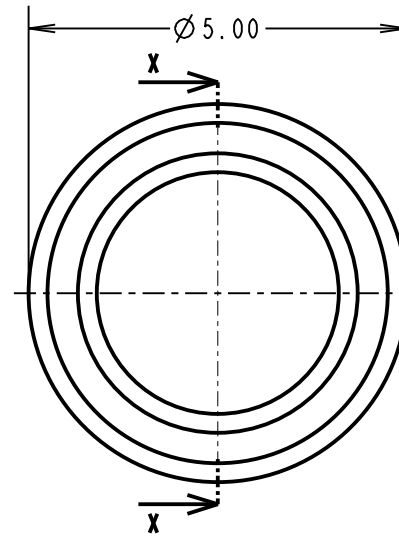
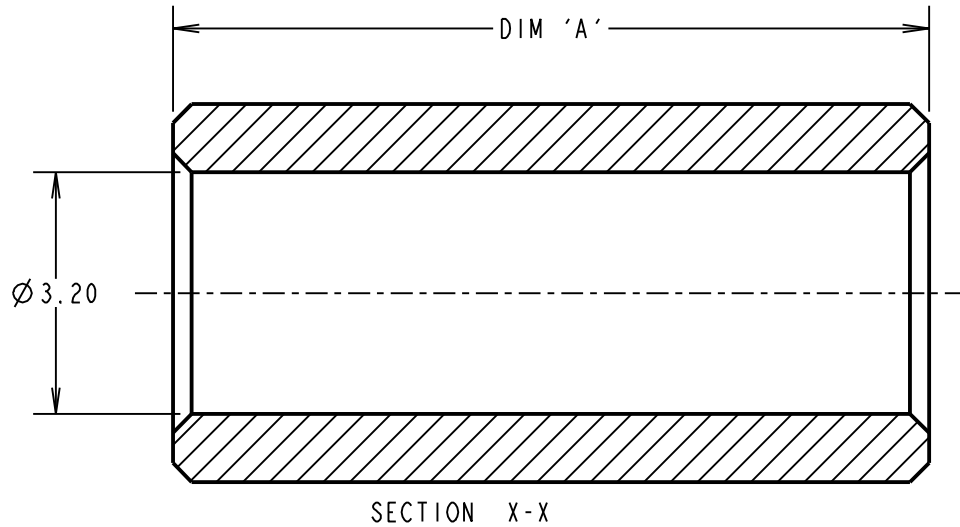
IF IN DOUBT - ASK

©

NOT TO SCALE

THIRD ANGLE PROJECTION

ALL DIMENSIONS IN mm



ORDER CODE:

R30-620XXXX

LENGTH: _____
SEE DIM 'A' IN TABLE

FINISH: _____
14 = GOLD CHROMATE CONVERSION
(F0804)

PART No.	DIM 'A' ±0.10mm	PART No.	DIM 'A' ±0.15mm
R30-62003XX	3.00	R30-62013XX	13.00
R30-62004XX	4.00	R30-62014XX	14.00
R30-62005XX	5.00	R30-62015XX	15.00
R30-62006XX	6.00	R30-62016XX	16.00
R30-62007XX	7.00	R30-62018XX	18.00
R30-62008XX	8.00	R30-62020XX	20.00
R30-63009XX	9.00	R30-62025XX	25.00
R30-62010XX	10.00	R30-62030XX	30.00
R30-62011XX	11.00		
R30-62012XX	12.00		

NOTES:
1. 0.25mm CHAMFER ON OUTER AND INNER DIAMETER.

MSP	6	5/11/2014	12703
NAME	ISS.	DATE	C/NOTE
APPROVED:			
CHECKED:			
DRAWN:		S.BENNETT	
CUSTOMER REF.:			
ASSEMBLY DRG:			

HARWIN

www.harwin.com
technical@harwin.com

THIS DRAWING AND ANY INFORMATION OR DESCRIPTIVE MATTER SET OUT HEREON ARE CONFIDENTIAL AND COPYRIGHT PROPERTY OF THE HARWIN GROUP AND MUST NOT BE DISCLOSED, LOANED, COPIED OR USED FOR MANUFACTURING, TENDERING OR FOR ANY OTHER PURPOSE WITHOUT THEIR WRITTEN PERMISSION.

TOLERANCES
X. = ±1mm
X.X = ±0.25mm
X.XX = ±0.10mm
X.XXX = ±0.01mm
ANGLES = ±5°
UNLESS STATED

MATERIAL:
ALUMINIUM
1050A H08 TO BS1471
(ALM1458)
FINISH: SEE ABOVE
S/AREA: mm²

TITLE:
M3 CIRCULAR
CLEARANCE SPACER
DRAWING NUMBER:
R30-620XXXX

SHT
2 OF 2