

# Customer Information Sheet

DRAWING No.: S1621-XX

SHEET 2 OF 2

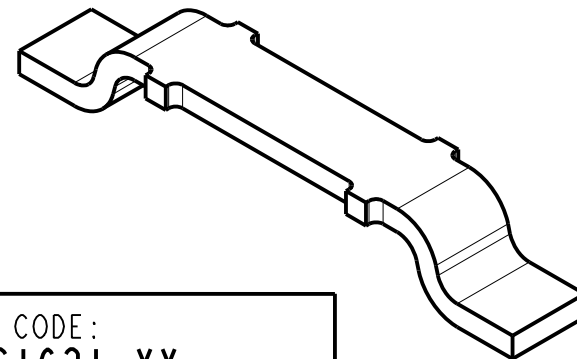
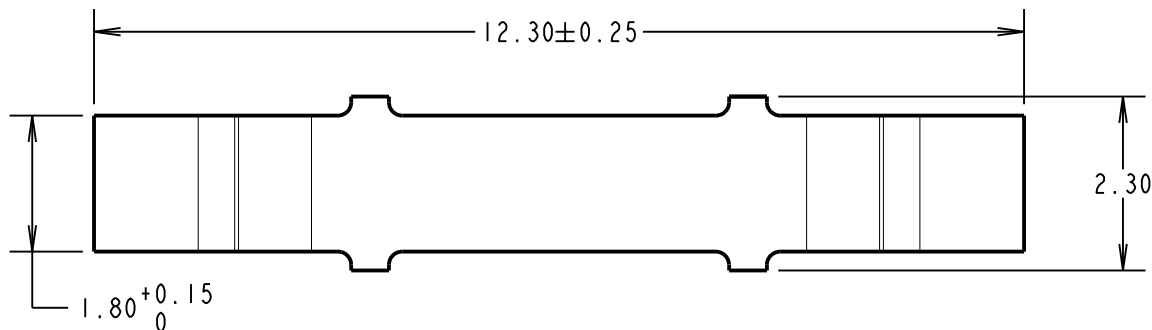
IF IN DOUBT - ASK

©

NOT TO SCALE

THIRD ANGLE PROJECTION

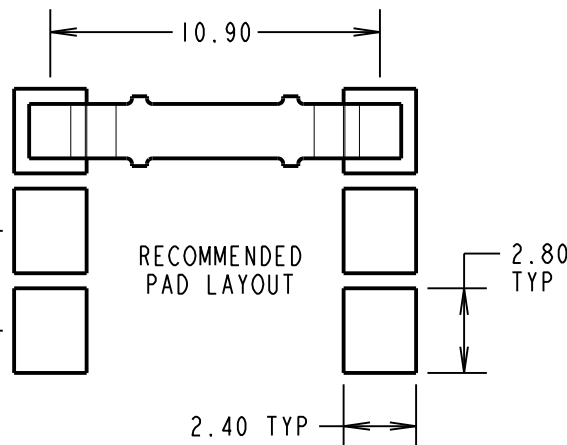
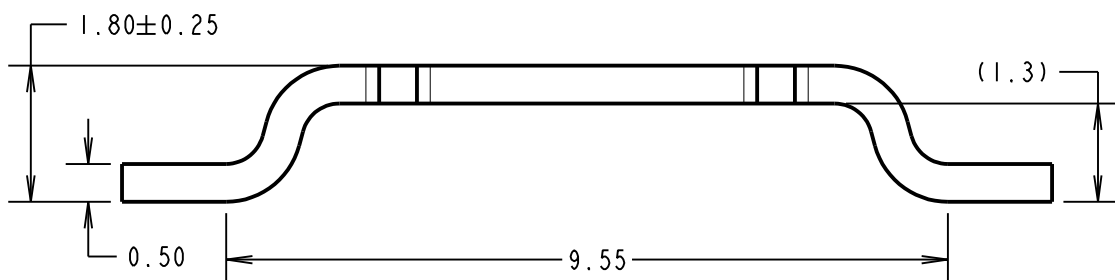
ALL DIMENSIONS IN mm



ORDER CODE:  
**S1621-XX**

FINISH \_\_\_\_\_

06 = 4μ 90/10 TIN/LEAD OVER NICKEL  
46 = 3μ 100% TIN OVER NICKEL



COMPONENT SPECIFICATION:  
MATERIAL = BRASS CW508L 1/2 HARD  
FINISH  
06 = 4μ 90/10 TIN/LEAD  
46 = 4μ 100% TIN  
CURRENT RATING = 10A (30°C TEMP RISE)  
CONTACT RESISTANCE = 20mΩ MAX

SB	10	01.07.15	12984
NAME	ISS.	DATE	C/NOTE
APPROVED:		S.BENNETT	
CHECKED:		M.PLESTED	
DRAWN:		W. J. BOURNE	
CUSTOMER REF.:			
ASSEMBLY DRG:			

- FOR TAPE AND REELED COMPONENT, SEE DRAWING S162-XXR.
- PACKING: 1000 COMPONENTS PER BAG.

## HARWIN

www.harwin.com  
technical@harwin.com

THIS DRAWING AND ANY INFORMATION OR DESCRIPTIVE MATTER SET OUT HEREON ARE CONFIDENTIAL AND COPYRIGHT PROPERTY OF THE HARWIN GROUP AND MUST NOT BE DISCLOSED, LOANED, COPIED OR USED FOR MANUFACTURING, TENDERING OR FOR ANY OTHER PURPOSE WITHOUT THEIR WRITTEN PERMISSION.

TOLERANCES  
X. = ±1mm  
X.X = ±0.50mm  
X.XX = ±0.10mm  
X.XXX = ±0.01mm  
ANGLES = ±5°  
UNLESS STATED

MATERIAL:  
BRASS CW508L

FINISH: SEE ORDER CODE

S/AREA: mm<sup>2</sup>

TITLE:  
SURFACE MOUNT JUMPER  
(LOOSE)

DRAWING NUMBER:  
**S1621-XX**

SHT  
2 OF 2