

# Customer Information Sheet

DRAWING No.: S2711-XXR

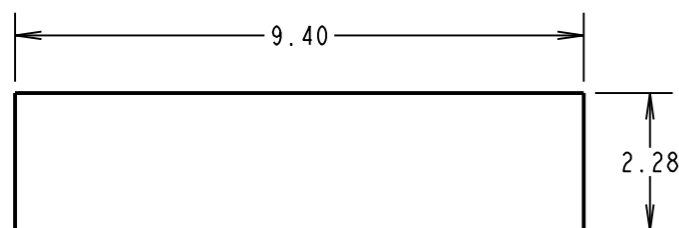
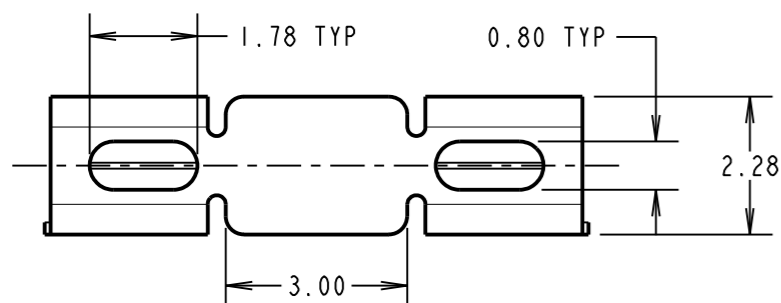
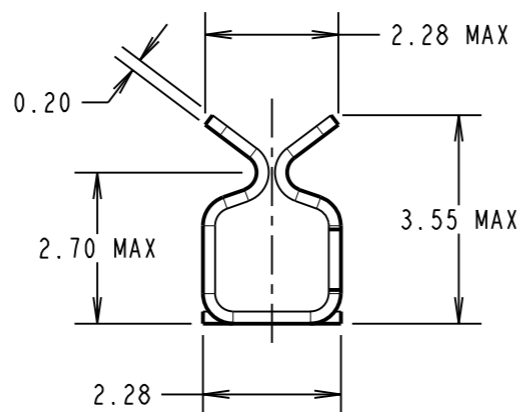
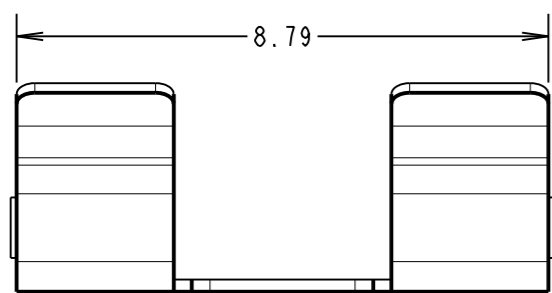
IF IN DOUBT - ASK

©

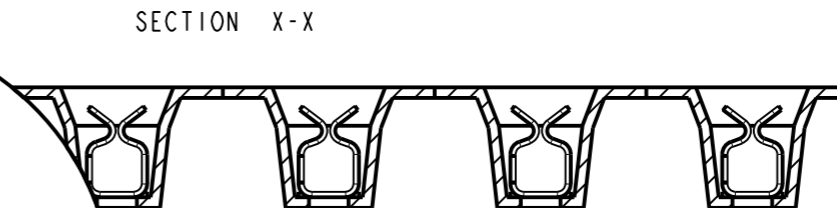
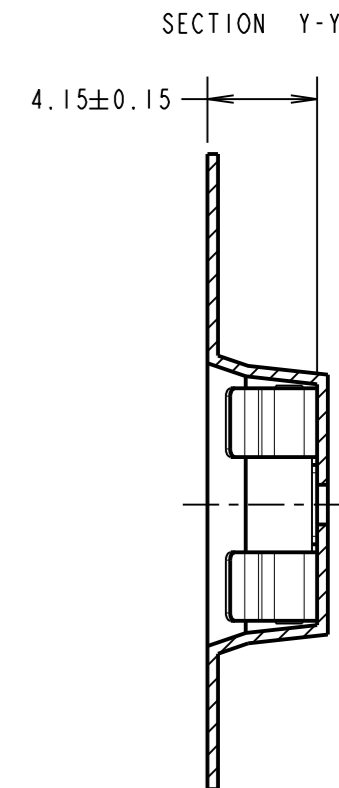
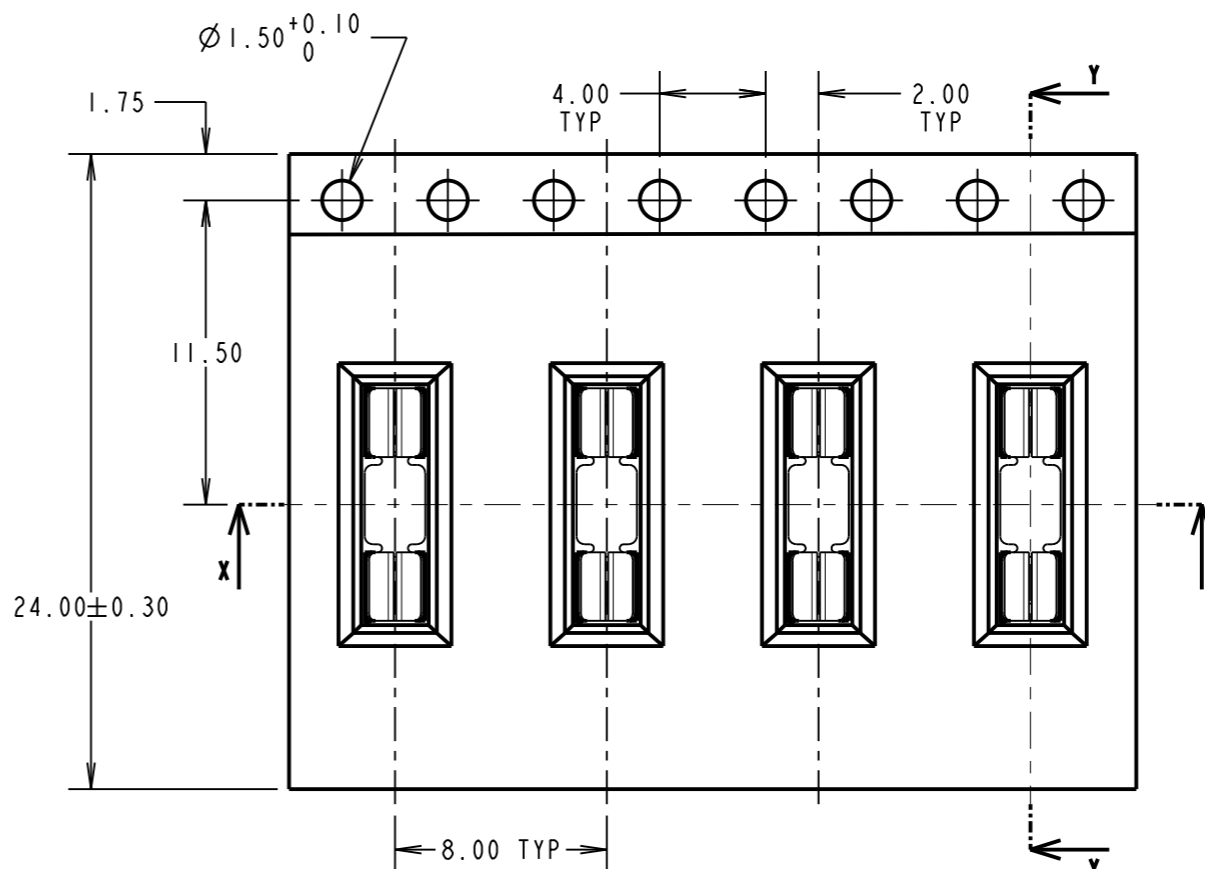
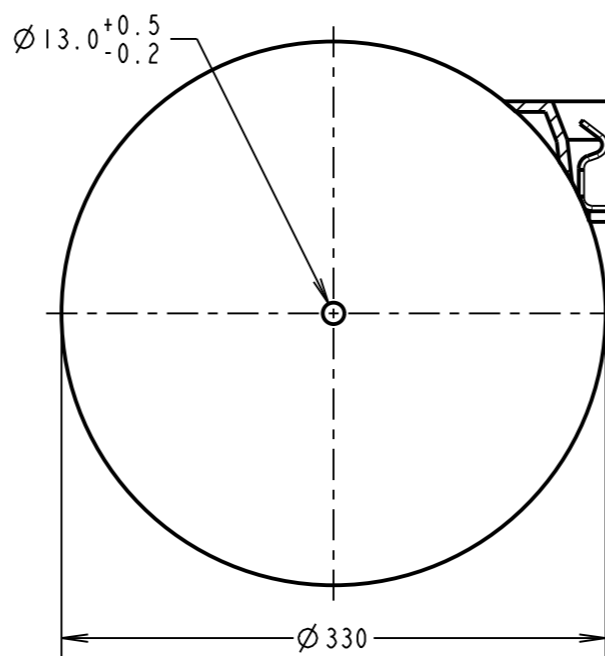
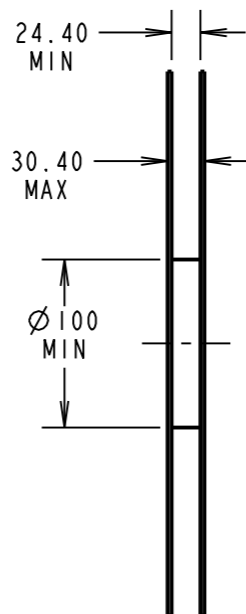
NOT TO SCALE

THIRD ANGLE PROJECTION

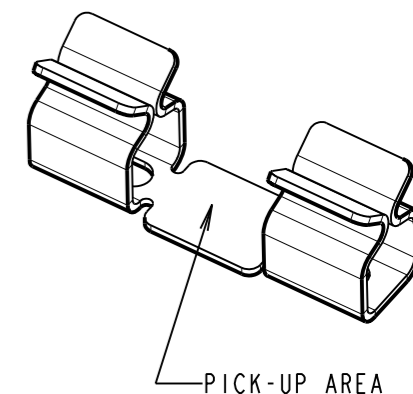
ALL DIMENSIONS IN mm



RECOMMENDED PAD LAYOUT



REELING DIRECTION →



COMPONENT SPECIFICATION:  
 MATERIAL = CUPRO NICKEL  
 FINISH:  
 06 = 3μ 90/10 TIN/LEAD  
 46 = 3μ 100% TIN

PERFORMANCE SPECIFICATIONS:  
 INSERTION FORCE (AFTER CONDITIONING) = 4N MAX  
 WITHDRAWAL FORCE = 0.5N MIN  
 DURABILITY = 20 INSERTIONS MINIMUM  
 CONTACT RESISTANCE = 20mΩ MAX  
 SHIELD THICKNESS = 0.17mm - 0.30mm

NOTES:  
 1. QUANTITY PER REEL = 1,900.  
 2. THIS PRODUCT IS TAPED AND REELED IN ACCORDANCE WITH EIA-481 (ELECTRONIC INDUSTRIES ASSOCIATION).

ORDER CODE:  
**S2711-XXR**  
 FINISH:  
 06 = TIN/LEAD  
 46 = 100% TIN OVER NICKEL

MGP	8	02.09.13	12201
NAME	ISS.	DATE	C/NOTE
APPROVED: MGP			
CHECKED: SB			
DRAWN: J.EVANS			
CUSTOMER REF.:			
ASSEMBLY DRG:			

**HARWIN**  
 www.harwin.com  
 technical@harwin.com

THIS DRAWING AND ANY INFORMATION OR DESCRIPTIVE MATTER SET OUT HEREON ARE CONFIDENTIAL AND COPYRIGHT PROPERTY OF THE HARWIN GROUP AND MUST NOT BE DISCLOSED, LOANED, COPIED OR USED FOR MANUFACTURING, TENDERING OR FOR ANY OTHER PURPOSE WITHOUT THEIR WRITTEN PERMISSION.

TOLERANCES  
 X. = ±1mm  
 X.X = ±0.25mm  
 X.XX = ±0.10mm  
 X.XXX = ±0.01mm  
 ANGLES = ±5°  
 UNLESS STATED

MATERIAL: SEE ABOVE  
 FINISH: SEE ABOVE  
 S/AREA: mm<sup>2</sup>

TITLE: SMT RFI SHIELD CLIP IN TAPE AND REEL (CUPRO NICKEL)

DRAWING NUMBER: S2711-XXR

SHT 2 OF 2