

Customer Information Sheet

DRAWING No.: R6570-00 - R6575-00

IF IN DOUBT - ASK

©

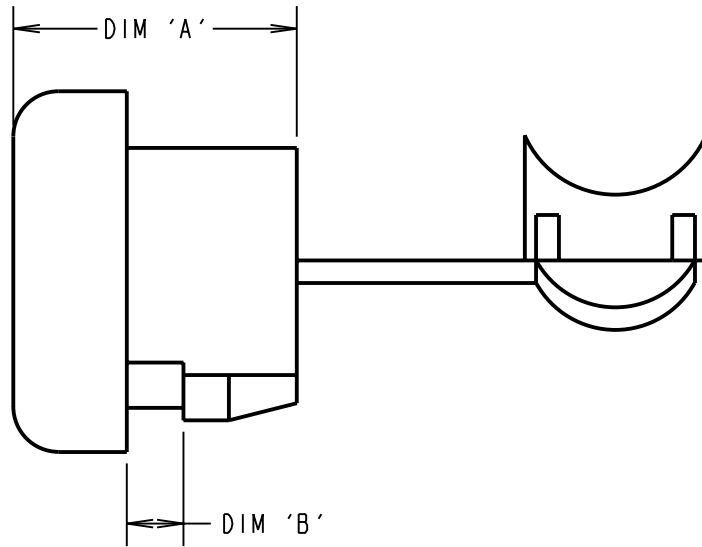
NOT TO SCALE

THIRD ANGLE PROJECTION

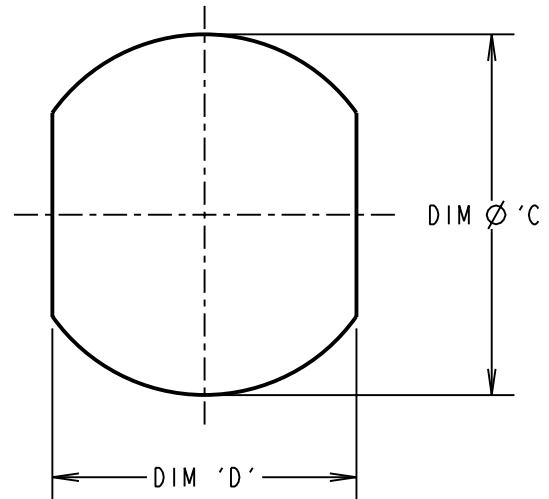
ALL DIMENSIONS IN mm

NOTES:

1. ALL TOLERANCES ARE ± 0.50 UNLESS OTHERWISE STATED.
2. TEMPERATURE RANGE = -40°C TO $+85^{\circ}\text{C}$.



RECOMMENDED MOUNTING HOLE



ORDER CODE:
R657X-00
SIZE CODE _____
(SEE TABLE)

PART No.	CABLE BUNDLE DIAMETER	DIM 'A'	DIM 'B'	PANEL THICKNESS	DIM 'C'	DIM 'D'
R6570-00	$\varnothing 6.2 - 7.4\text{mm}$	11.10	1.85	0.5 - 1.6mm	$\varnothing 14.34$	10.90
R6571-00	$\varnothing 6.2 - 7.4\text{mm}$	11.20	2.80	1.8 - 2.5mm	$\varnothing 12.90$	11.00
R6572-00	$\varnothing 7.4 - 8.2\text{mm}$	14.50	2.00	0.5 - 1.6mm	$\varnothing 15.90$	13.40
R6573-00	$\varnothing 7.4 - 8.2\text{mm}$	14.50	3.60	1.9 - 3.2mm	$\varnothing 15.90$	13.40
R6574-00	$\varnothing 8.2 - 9.2\text{mm}$	14.50	1.50	0.5 - 1.6mm	$\varnothing 15.90$	13.40
R6575-00	$\varnothing 8.2 - 9.2\text{mm}$	14.80	3.20	1.9 - 3.2mm	$\varnothing 15.90$	14.00

CP	3	11.03.10	10702
NAME	ISS.	DATE	C/NOTE
APPROVED: C.PENROSE			
CHECKED:		R.ADDE	
DRAWN:		D.BECK	
CUSTOMER REF.:			
ASSEMBLY DRG:			

HARWIN

HARWIN USA
TEL: 603 893 5376
FAX: 603 893 5396
mis@harwin.com

HARWIN Europe (UK)
TEL: 023 9231 4545
FAX: 023 9231 4590
mis@harwin.co.uk

HARWIN Asia
TEL: +65 6 779 4909
FAX: +65 6 779 3868
mis@harwin.com.sg

THIS DRAWING AND ANY INFORMATION OR DESCRIPTIVE MATTER SET OUT HEREON ARE CONFIDENTIAL AND COPYRIGHT PROPERTY OF THE HARWIN GROUP AND MUST NOT BE DISCLOSED, LOANED, COPIED OR USED FOR MANUFACTURING, TENDERING OR FOR ANY OTHER PURPOSE WITHOUT THEIR WRITTEN PERMISSION.

TOLERANCES
X = $\pm 1\text{mm}$
X.X = $\pm 0.25\text{mm}$
X.XX = $\pm 0.10\text{mm}$
X.XXX = $\pm 0.01\text{mm}$
ANGLES = $\pm 5^{\circ}$
UNLESS STATED

MATERIAL:
NYLON 66 BLACK UL94V-2

FINISH: CLEAN

S/AREA: mm²

TITLE:
STRAIN RELIEF BUSH

DRAWING NUMBER:
R6570-00 - R6575-00

SHT
2 OF 2