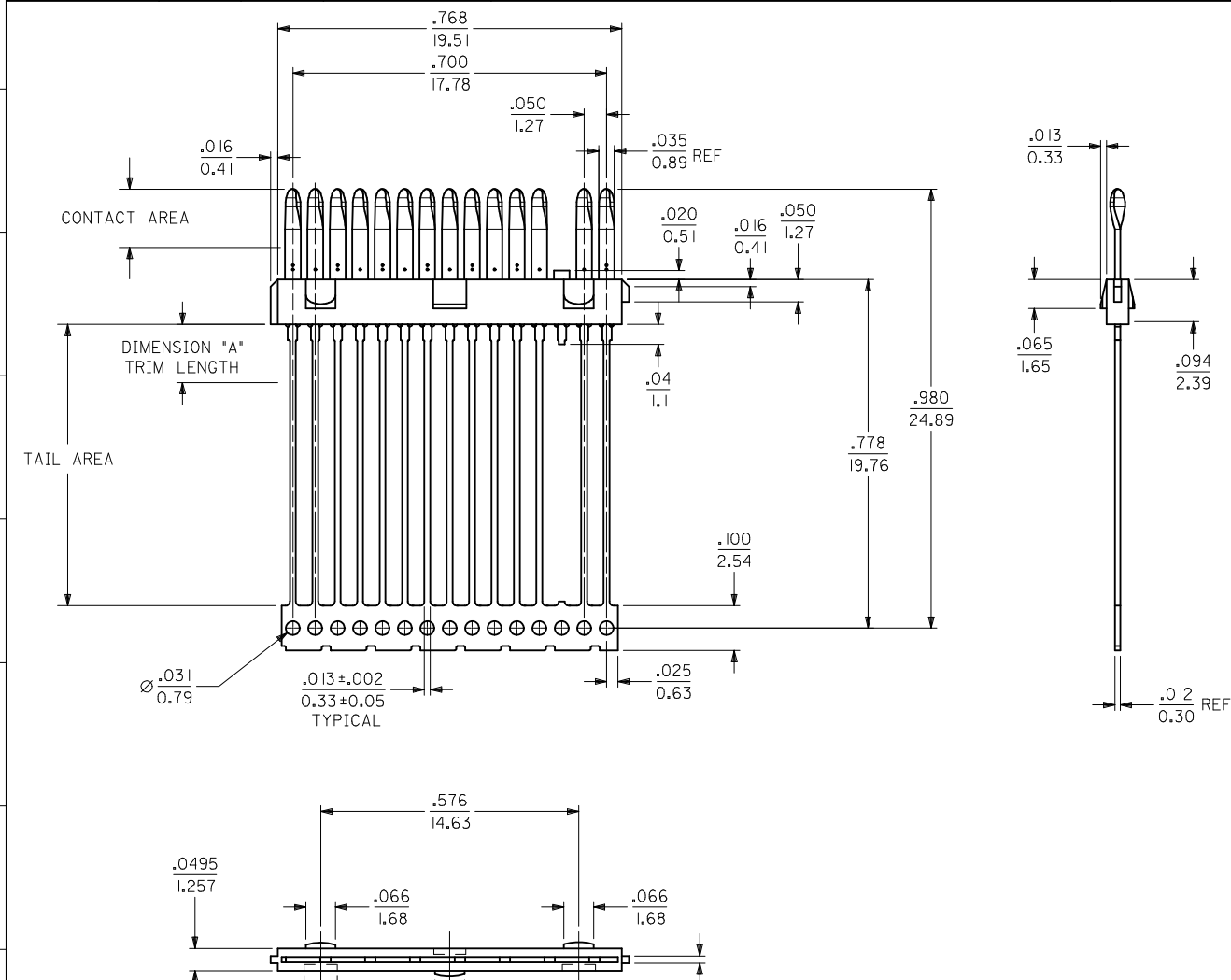


13	12	11	10	9	8	7	6	5	4	3	2	1
ITEM NUMBER	CARRIER	TRIMMED	DIMENSION "A"	PLATING								
				CONTACT AREA				TAIL AREA				
70984-1090	YES	NO	N/A	.000030/0.000762 MINIMUM GOLD OVER A NICKEL UNDERPLATE				.000100/(0.00254) MINIMUM TIN OVER A NICKEL UNDERPLATE				
70984-1091	NO	YES	.130±.010/3.30±0.25	.000030/0.000762 MINIMUM GOLD OVER A NICKEL UNDERPLATE				.000100/(0.00254) MINIMUM TIN OVER A NICKEL UNDERPLATE				
70984-1098	YES	NO	N/A	GOLD FLASH OVER A NICKEL UNDERPLATE				.000100/(0.00254) MINIMUM TIN OVER A NICKEL UNDERPLATE				
70984-1099	NO	YES	.130±.010/3.30±0.25	GOLD FLASH OVER A NICKEL UNDERPLATE				.000100/(0.00254) MINIMUM TIN OVER A NICKEL UNDERPLATE				



NOTES

- 1) MATERIALS:
INSULATOR: GLASS FILLED LCP (LIQUID CRYSTAL POLYMER), UL 94V-0, COLOR: BLACK.
TERMINAL: PHOSPHOR BRONZE, .012/0.30 THICK.
PLATING: SEE TABLE
- 2) FOR PART NUMBERS AND PLATING OPTIONS, SEE CHART.
- 3) PARTS CONFORM TO PRODUCT SPECIFICATION PS-75134-001.
- 4) PACKAGED PER SPECIFICATION PK-70873-0335 APPLIES.

ADD 30 GOLD OPTS EC NO: UCP2014-4242 DRW: DMORGAN 2014/04/14 CHKD: MPOFF 2014/04/14 APPR: SMILLER 2014/04/18	QUALITY SYMBOLS ▽=0 ▽=0 ▽=0	GENERAL TOLERANCES (UNLESS SPECIFIED)		DIMENSION STYLE		SCALE	DESIGN UNITS	THIRD ANGLE PROJECTION			
				IN/MM			INCH				
				mm	INCH	DRAWN BY	DATE	TITLE			
				4 PLACES ± ---	± ---	DMORGAN	2002/10/17	SALES 14 CKT DMS-59 PLUG INSERT MOLDED CONTACT			
		3 PLACES ± ---	± .010	CHECKED BY	DATE						
		2 PLACES ± 0.25	± .015	BBARKER	2002/10/17						
		1 PLACE ± 0.38	± ---	APPROVED BY	DATE	DOCUMENT NO.					
		0 PLACE ± ---	± ---	SMILLER	2014/04/18	SD-70984-100					
		ANGULAR ±1/2°		MATERIAL NO.		SHEET NO.					
		DRAFT WHERE APPLICABLE MUST REMAIN WITHIN DIMENSIONS		SEE TABLE		1 OF 1					
		THIS DRAWING CONTAINS INFORMATION THAT IS PROPRIETARY TO MOLEX INCORPORATED AND SHOULD NOT BE USED WITHOUT WRITTEN PERMISSION									