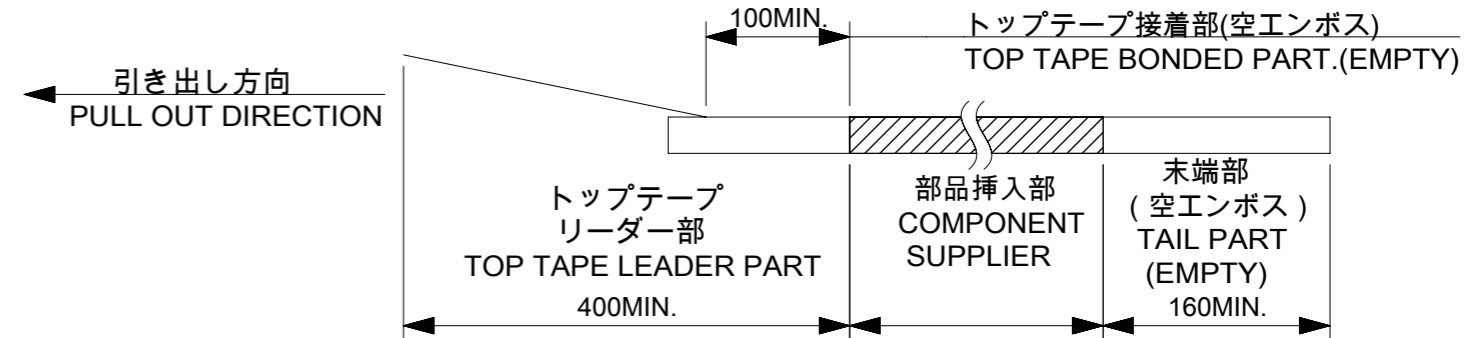
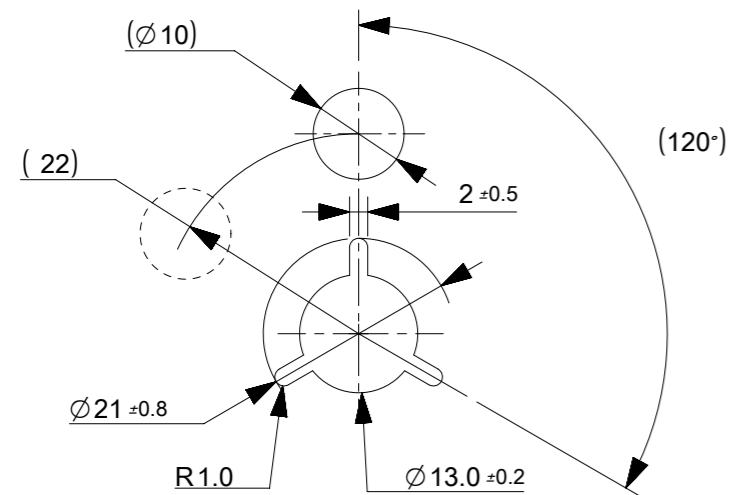


NOTES

- 製品 (50225081**) の詳細寸法については、
図面 5022501003 DOC.PART 000 をご参照ください
IN THE PACKAGE, PART NO. 50225081** DETAILED DIMENSIONS,
REFER TO SALES DRAWING NO. 5022501003 DOC.PART 000.
- 梱包数量 : 3000個 / リール
NUMBER OF CONNECTORS : 3000 PCS/REEL.
- リードテープ長さ
LEAD TAPE LENGTH.



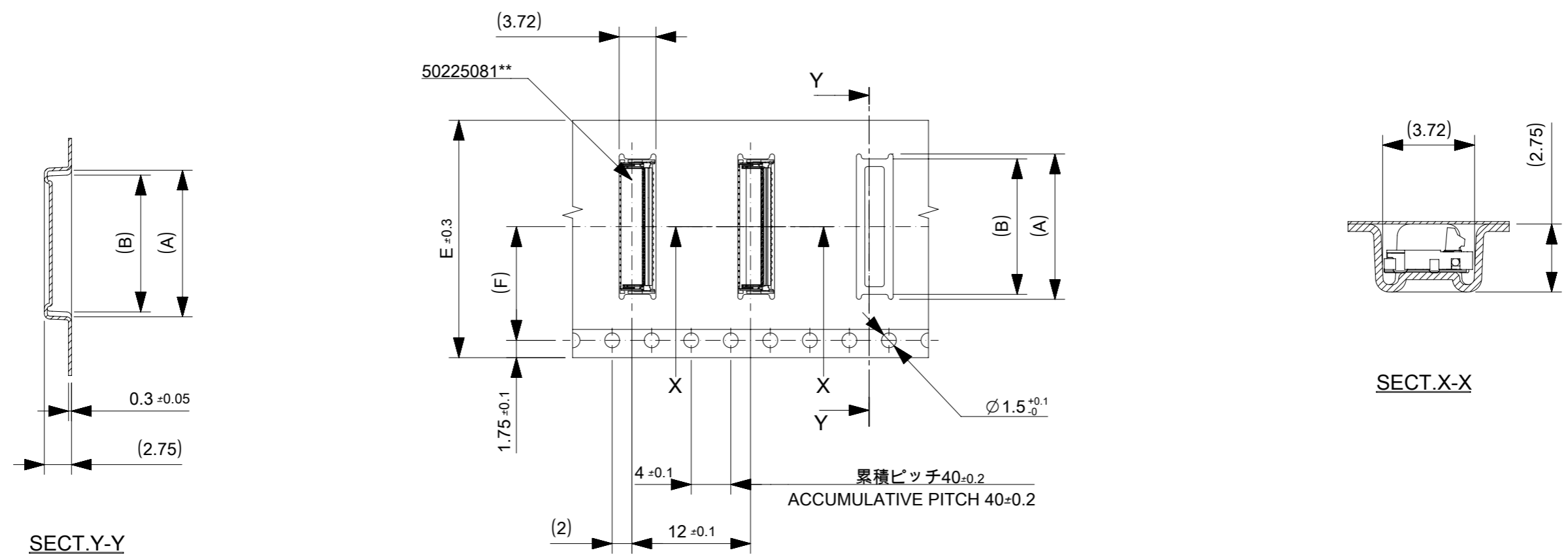
- 材料 (MATERIAL)
キャリアテープ(CARRIER TAPE) : ポリプロピレン(POLYSTYRENE)
トップテープ(TOP TAPE) : PET, OTHER
リール(REEL) : ポリスチレン(POLYSTYRENE)<リサイクル材含む>
<RECYCLE MATERIAL CONTAINED>
- カバーテープの剥離強度については,IEC60286-3に準拠
COVER TAPE PEEL FORCE IS DEFINED BY IEC60286-3.
- ELV 及び RoHS適合品
ELV AND RoHS COMPLIANT.



DETAIL "Z"

THIS DRAWING CONTAINS INFORMATION THAT IS PROPRIETARY TO MOLEX ELECTRONIC TECHNOLOGIES, LLC AND SHOULD NOT BE USED WITHOUT WRITTEN PERMISSION											
EC NO: 104567 DRWN: SM42 CHK'D: KTAKAHASHI APPR: TKUSUHARA01	2016/01/22 2016/05/09 2016/05/09	GENERAL TOLERANCES (UNLESS SPECIFIED)		DIMENSION UNITS	SCALE	molex					
		ANGULAR TOL $\pm 3.0^\circ$		MM	NTS						
		4 PLACES ± 0.2	3 PLACES ± 0.2	2 PLACES ± 0.25	1 PLACE ± 0.3	0 PLACES ± 0.3	DRWN BY	DATE	0.3 FPC CONN E/O B/F HGT=0.9MM EMBSTP PKG		
		DRAFT WHERE APPLICABLE MUST REMAIN WITHIN DIMENSIONS					SM42	2016/01/22			
							CHK'D BY	DATE	PRODUCT CUSTOMER DRAWING		
							KTAKAHASHI	2016/05/09			
					APPR BY	DATE	SERIES				
					TKUSUHARA01	2016/05/09				502250	MATERIAL NUMBER
					DRAWING SIZE	THIRD ANGLE PROJECTION	SEE CHART		GENERAL MARKET		
					A3		DOCUMENT NUMBER		DOC TYPE	DOC PART	SHEET NUMBER
							5022500003		PSD	000	1 OF 4

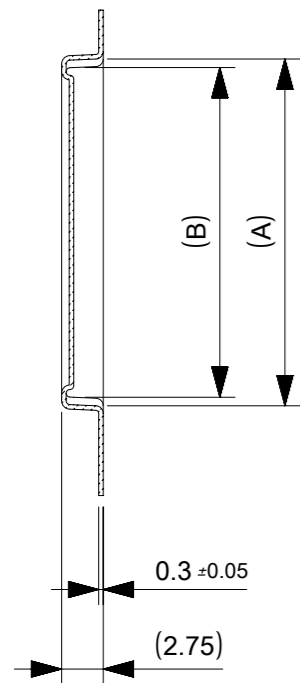
引き出し方向
PULL OUT DIRECTION



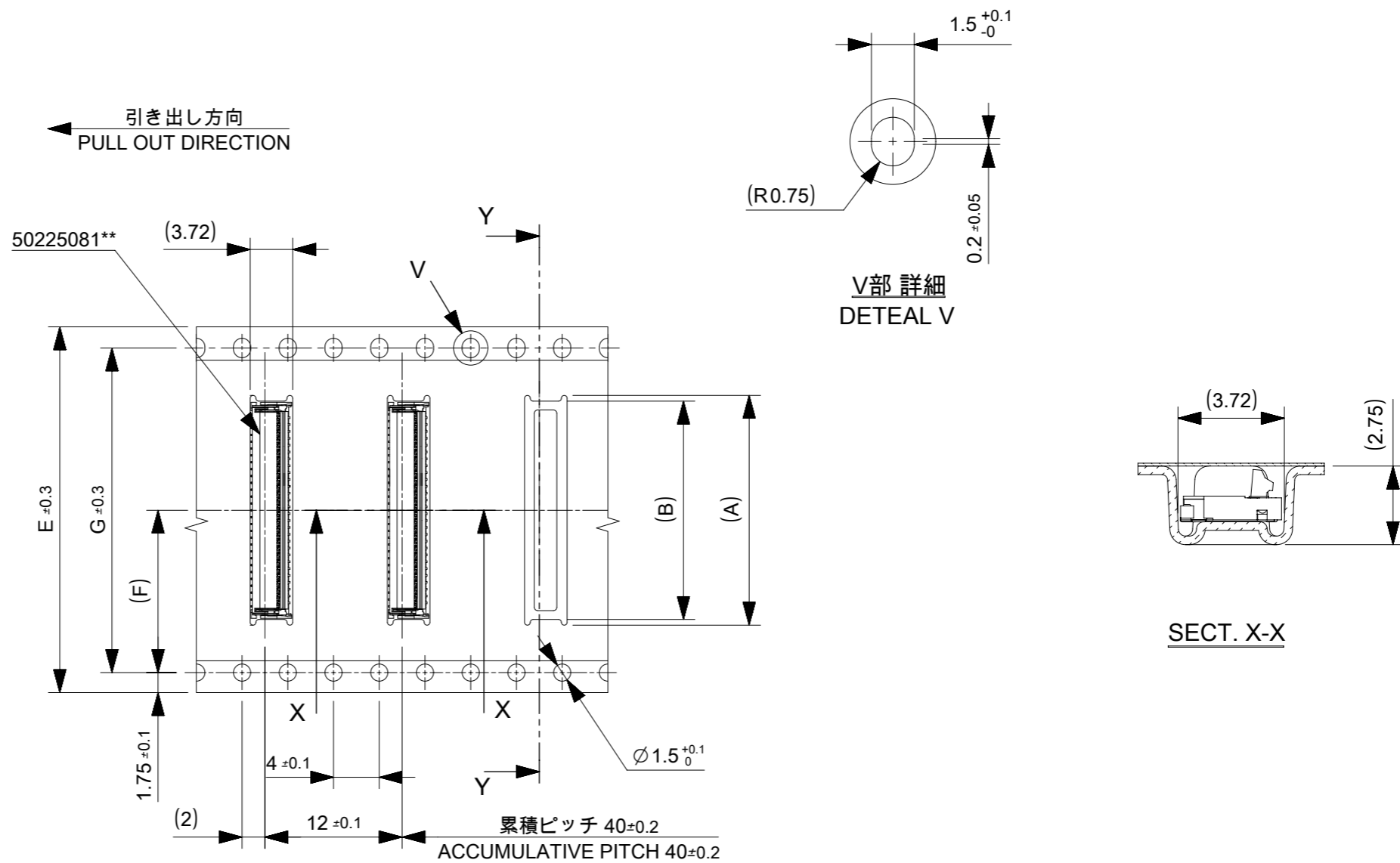
24	11.5	24	29.4	25.4	14.3	15.3	5022508041	41	
					13.1	14.1	5022508037	37	
					10.1	13.1	5022508027	27	
キャリアテープ幅 CARRIER TAPE WIDTH		(F)	E	D	C	(B)	(A)	オーダー番号 ORDER No.	極数 CIRCUIT

THIS DRAWING CONTAINS INFORMATION THAT IS PROPRIETARY TO MOLEX ELECTRONIC TECHNOLOGIES, LLC AND SHOULD NOT BE USED WITHOUT WRITTEN PERMISSION

EC NO: 104567 DRWN: SM42 CHK'D: KTAKAHASHI APPR: TKUSUHARA01	2016/01/22	2016/05/09	2016/05/09	GENERAL TOLERANCES (UNLESS SPECIFIED) ANGULAR TOL ± 3.0 ° 4 PLACES ± 0.2 3 PLACES ± 0.2 2 PLACES ± 0.25 1 PLACE ± 0.3 0 PLACES ± 0.3 DRAFT WHERE APPLICABLE MUST REMAIN WITHIN DIMENSIONS	DIMENSION UNITS	SCALE	
	MM	NTS	DRWN BY		DATE		
	SM42	2016/01/22	CHK'D BY		DATE		
	KTAKAHASHI	2016/05/09	APPR BY		DATE		
	TKUSUHARA01	2016/05/09	DRAWING SIZE		THIRD ANGLE PROJECTION		
A	A3			PRODUCT CUSTOMER DRAWING			
SERIES: 502250		MATERIAL NUMBER: SEE CHART		CUSTOMER: GENERAL MARKET			
DOCUMENT NUMBER: 5022500003			DOC TYPE: PSD	DOC PART: 000	SHEET NUMBER: 2 OF 4		



SECT. Y-Y

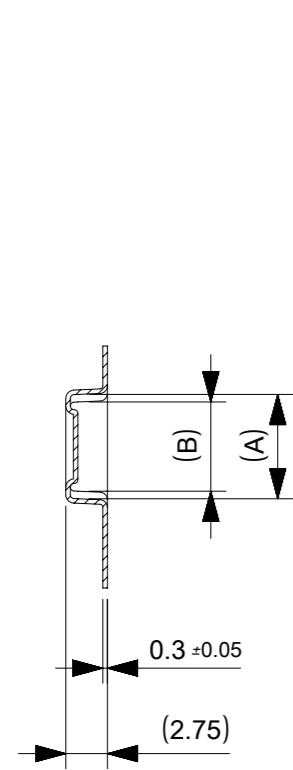


32mm幅キャリアテープ
32mm CARRIER TAPE WIDTH

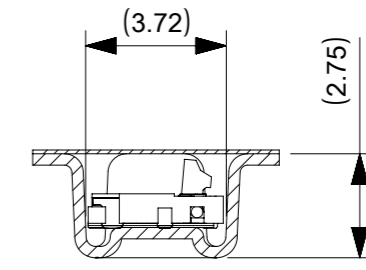
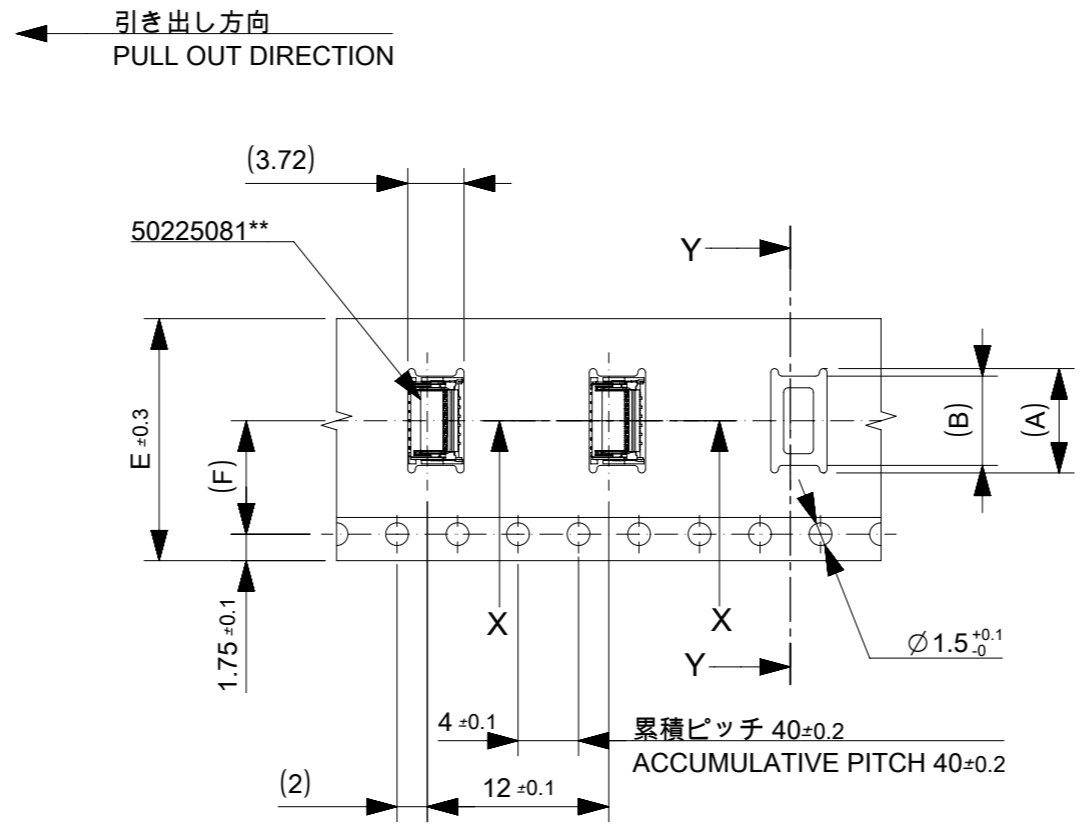
32	28.4	14.2	32	37.4	33.4	17.3	18.3	5022508051	51
キャリアテープ幅 CARRIER TAPE WIDTH	G	(F)	E	D	C	(B)	(A)	製品番号 ORDER NO.	極数 CIRCUIT

THIS DRAWING CONTAINS INFORMATION THAT IS PROPRIETARY TO MOLEX ELECTRONIC TECHNOLOGIES, LLC AND SHOULD NOT BE USED WITHOUT WRITTEN PERMISSION

EC NO: 104567 DRWN: SM42 CHK'D: KTAKAHASHI APPR: TKUSUHARA01	2016/01/22	2016/05/09	2016/05/09	GENERAL TOLERANCES (UNLESS SPECIFIED) ANGULAR TOL ± 3.0 ° 4 PLACES ± 0.2 3 PLACES ± 0.2 2 PLACES ± 0.25 1 PLACE ± 0.3 0 PLACES ± 0.3	DIMENSION UNITS	SCALE					
					MM	NTS		0.3 FPC CONN E/O B/F HGT=0.9MM EMBSTP PKG			
					DRWN BY	DATE			SM42	2016/01/22	
					CHK'D BY	DATE			KTAKAHASHI	2016/05/09	
					APPR BY	DATE	TKUSUHARA01	2016/05/09	PRODUCT CUSTOMER DRAWING		
					DRAWING SIZE	THIRD ANGLE PROJECTION	SERIES	MATERIAL NUMBER	CUSTOMER		
					A3		502250	SEE CHART	GENERAL MARKET		
							DOCUMENT NUMBER	DOC TYPE	DOC PART	SHEET NUMBER	
							5022500003	PSD	000	3 OF 4	



SECT. Y-Y

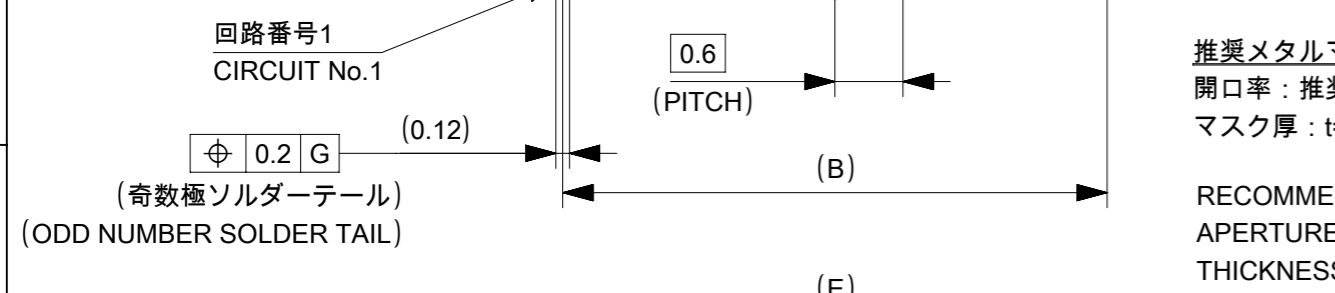
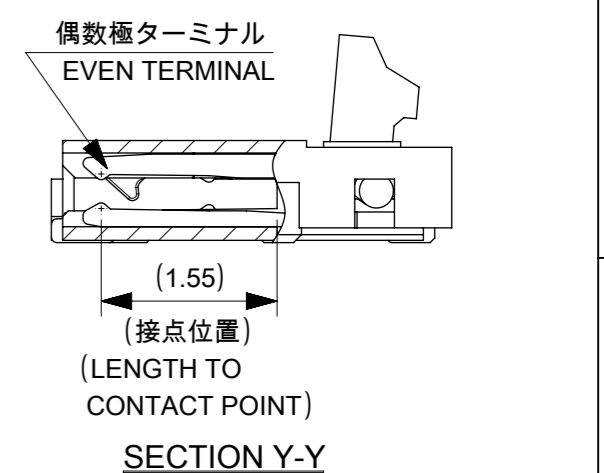
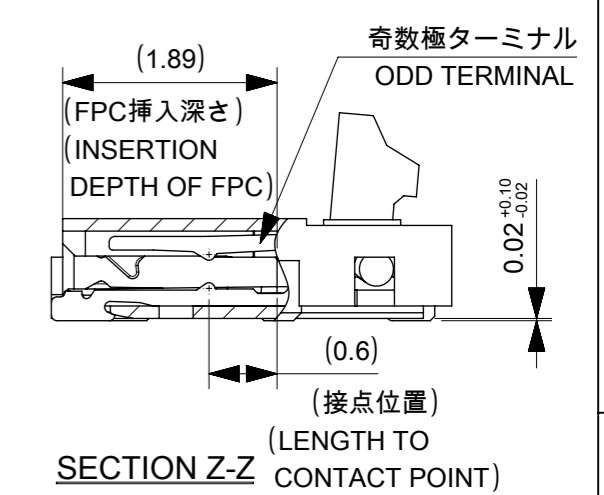
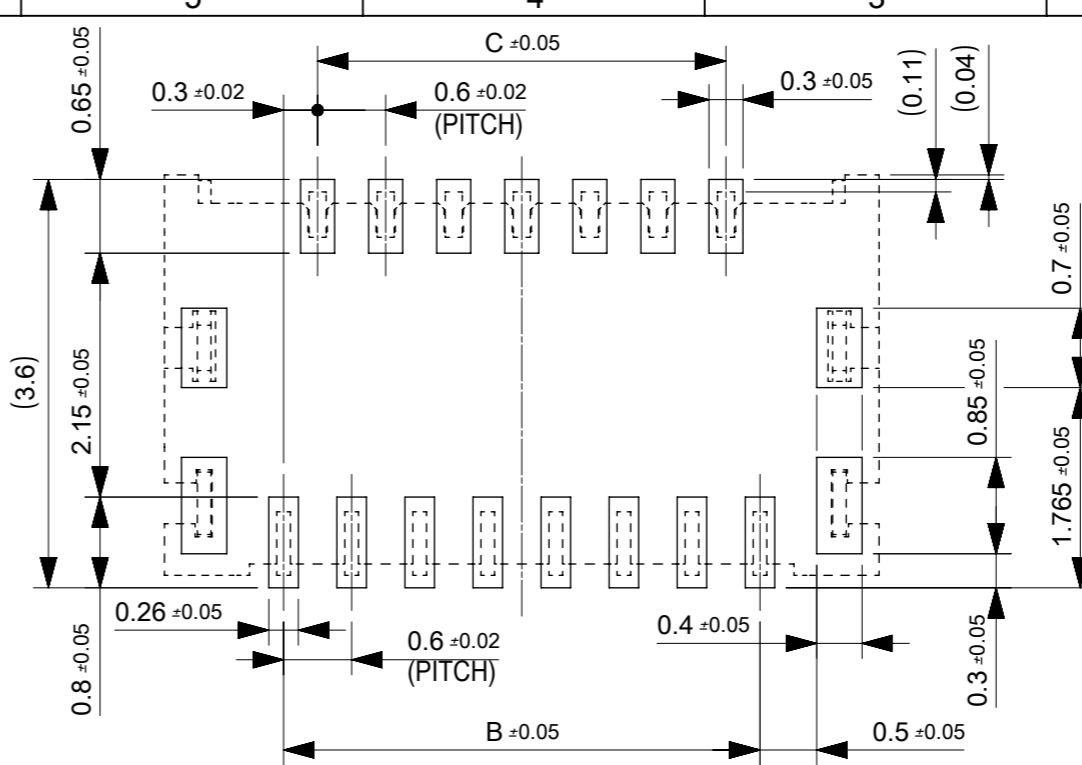
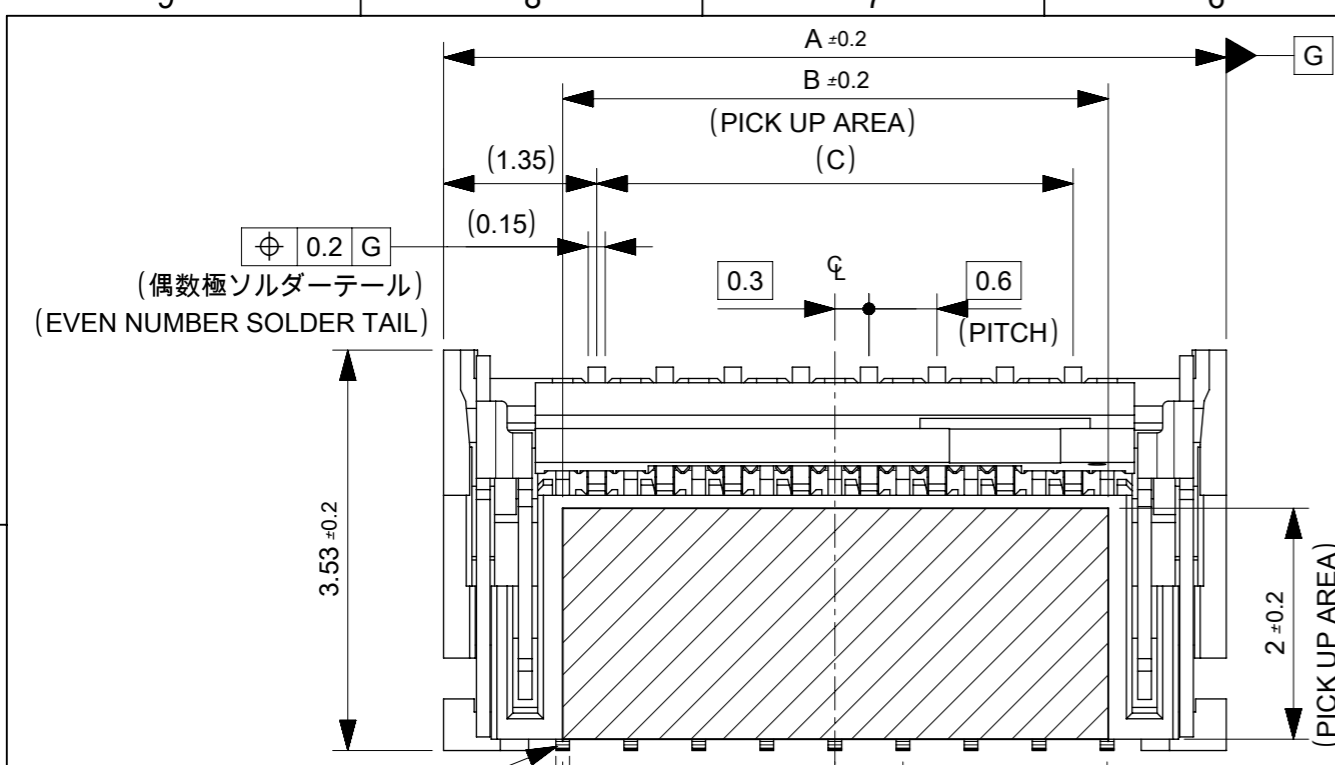


SECT. X-X

16	7.5	16	21.4	17.4	6.5	7.5	5022508015	15	
					5.9	6.9	5022508013	13	
キャリアテープ幅 CARRIER TAPE WIDTH		(F)	E	D	C	(B)	(A)	オーダー番号 ORDER No.	極数 CIRCUIT

THIS DRAWING CONTAINS INFORMATION THAT IS PROPRIETARY TO MOLEX ELECTRONIC TECHNOLOGIES, LLC AND SHOULD NOT BE USED WITHOUT WRITTEN PERMISSION

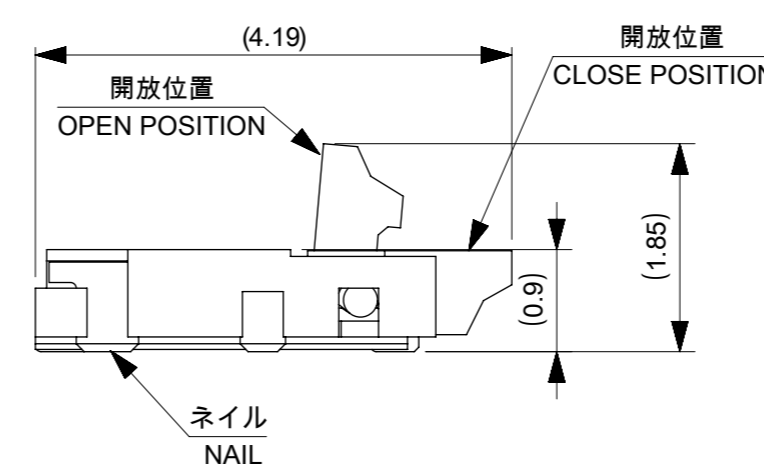
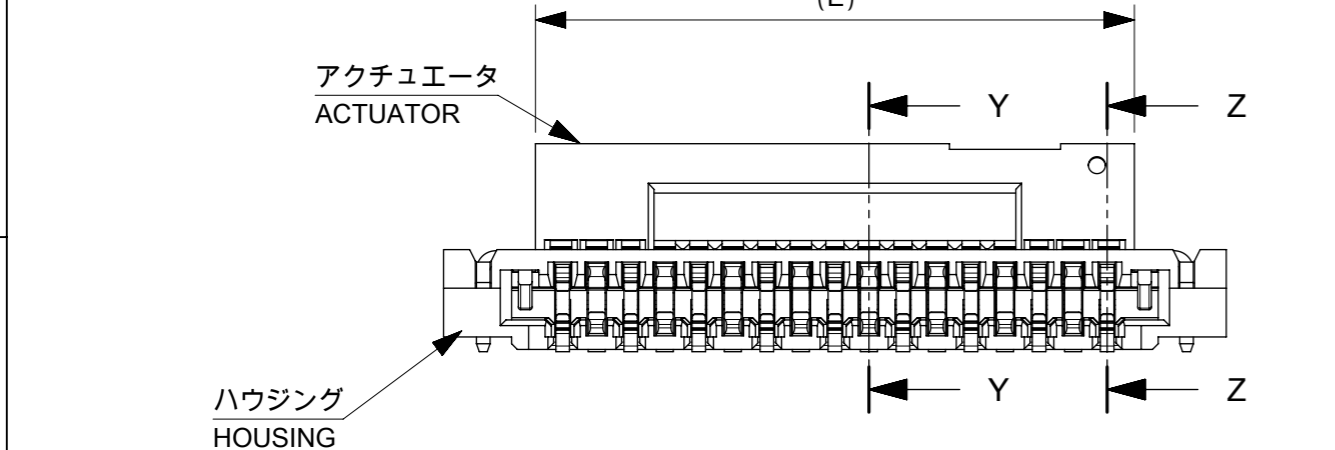
EC NO: 104567 DRWN: SM42 CHK'D: KTAKAHASHI APPR: TKUSUHARA01	2016/01/22	2016/05/09	2016/05/09	GENERAL TOLERANCES (UNLESS SPECIFIED) ANGULAR TOL ± 3.0 ° 4 PLACES ± 0.2 3 PLACES ± 0.2 2 PLACES ± 0.25 1 PLACE ± 0.3 0 PLACES ± 0.3 DRAFT WHERE APPLICABLE MUST REMAIN WITHIN DIMENSIONS	DIMENSION UNITS	SCALE					
					MM	NTS		0.3 FPC CONN E/O B/F HGT=0.9MM EMBSTP PKG			
					DRWN BY	DATE			SM42	2016/01/22	
					CHK'D BY	DATE			KTAKAHASHI	2016/05/09	
					APPR BY	DATE	TKUSUHARA01	2016/05/09	PRODUCT CUSTOMER DRAWING		
					DRAWING SIZE	THIRD ANGLE PROJECTION	SERIES	MATERIAL NUMBER	CUSTOMER		
					A3		502250	SEE CHART	GENERAL MARKET		
							DOCUMENT NUMBER	DOC TYPE	DOC PART	SHEET NUMBER	
							5022500003	PSD	000	4 OF 4	



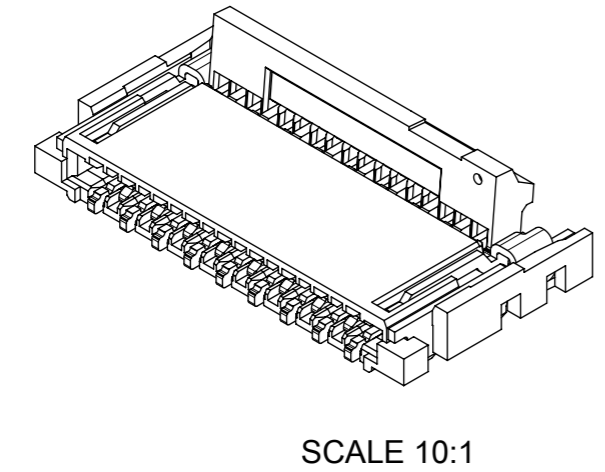
推奨メタルマスク
開口率：推奨パターン面積の100%
マスク厚：t=0.1mm

RECOMMENDED METAL MASK SPECIFICATION
APERTURE RATE : 100%
THICKNESS : 0.1mm

推奨基板レイアウト図(マウント面)
P.C. BOARD PATTERN
RECOMMENDED DIMENSION
(MOUNTING AREA)



15.3	15.48	15.9	14.4	15	17.1	5022508051	51
12.3	12.48	12.9	11.4	12	14.1	5022508041	41
11.1	11.28	11.7	10.2	10.8	12.9	5022508037	37
8.1	8.28	8.7	7.2	7.8	9.9	5022508027	27
4.5	4.68	5.1	3.6	4.2	6.3	5022508015	15
3.9	4.08	4.5	3.0	3.6	5.7	5022508013	13
F	E	D	C	B	A	EMBOSSED PACKAGE	極数
ORDER No. オーダー番号							CIRCUIT
CONNECTOR SERIES No. 50225081**							



THIS DRAWING CONTAINS INFORMATION THAT IS PROPRIETARY TO MOLEX ELECTRONIC TECHNOLOGIES, LLC AND SHOULD NOT BE USED WITHOUT WRITTEN PERMISSION

2016/01/28	2016/05/09	2016/05/09	GENERAL TOLERANCES (UNLESS SPECIFIED)	DIMENSION UNITS	SCALE
2016/01/28	2016/05/09	2016/05/09	ANGULAR TOL ± 3.0 °	MM	15:1
4 PLACES	± 0.2			DRWN BY	DATE
3 PLACES	± 0.2			RLALSANGI	2016/01/28
2 PLACES	± 0.25			CHK'D BY	DATE
1 PLACE	± 0.3			KTAKAHASHI	2016/05/09
0 PLACES	± 0.3			APPR BY	DATE
				TKUSUHARA01	2016/05/09
DRAFT WHERE APPLICABLE MUST REMAIN WITHIN DIMENSIONS				DRAWING SIZE	THIRD ANGLE PROJECTION
				A3	

EC NO: 104567
DRWN: RLALSANGI
CHK'D: KTAKAHASHI
APPR: TKUSUHARA01

0.3 FPC CONN E/O B/F
HSG ASSY HGT=0.9MM(DUAL CONTACT)

PRODUCT CUSTOMER DRAWING

SERIES	MATERIAL NUMBER	CUSTOMER	
502250	SEE CHART	GENERAL MARKET	
DOCUMENT NUMBER	DOC TYPE	DOC PART	SHEET NUMBER
5022501003	PSD	000	1 OF 2

注記 NOTES

1. 使用材料 MATERIAL

ハウジング：液晶ポリマー(LCP) ガラス充填 UL94V-0 (黒)
HOUSING : LIQUID CRYSTAL POLYMER(LCP) GLASS FILLED
UL94V-0(COLOR:BLACK)

アクチュエータ：ポリアミド(PA) ガラス充填 UL94HB (黒)
ACTUATOR : POLYAMIDE(PA) GLASS FILLED
UL94HB(COLOR:BLACK)

ターミナル：銅合金,ニッケル下地部分金メッキ (接触部及びテール部)
TERMINAL : COPPER ALLOY,
PARTLY GOLD(CONTACT,TAIL) OVER NICKEL PLATING

ネイル：リン青銅,ニッケル下地錫めっき
FITTING NAIL : PHOSPHOR-BRONZE, TIN OVER NICKEL PLATING

2. メッキ仕様 PLATING

ターミナル TERMINAL

接触部：部分金メッキ 0.1マイクロメートル以上,
ニッケルメッキ 1.0マイクロメートル以上

CONTACT AREA:SEPARATED GOLD 0.1 MICROMETER MIN.
NICKEL 1.0 MICROMETER MIN.

テール部：部分金メッキ

ニッケルメッキ 1.0マイクロメートル以上
TAIL AREA:SEPARATED GOLD.
NICKEL 1.0 MICROMETER MIN.

ネイル FITTING NAIL

錫めっき 1.5マイクロメートル以上,ニッケルメッキ 1.5マイクロメートル以上
TIN 1.5 MICROMETER MIN. NICKEL 1.5 MICROMETER MIN.

3. ソルダーテール半田付け面,及びネイル半田付け面の平坦度

13/15/27/37/41ckt:0.1mm MAX., 51ckt:0.12mm MAX.(リフロー前後)

COPLANARITY OF SOLDER TAILS AND FITTING NAILS

TO BE 13/15/27/37/41ckt:0.1mm MAX., 51ckt:0.12mm MAX.(BEFORE AND AFTER THE REFLOW)

4. 基板実装前にアクチュエータを操作しないで下さい。

PLEASE DO NOT OPERATE THE ACTUATOR BEFORE MOUNTING.

必ず基板に実装し,FPCを挿入してからアクチュエータを操作して下さい。

PLEASE OPERATE THE ACTUATOR AFTER MOUNTING ON
THE SUBSTRATE,AND MATING FPC.

5. 推奨メタルマスク RECOMMENDED METAL MASK SPECIFICATION

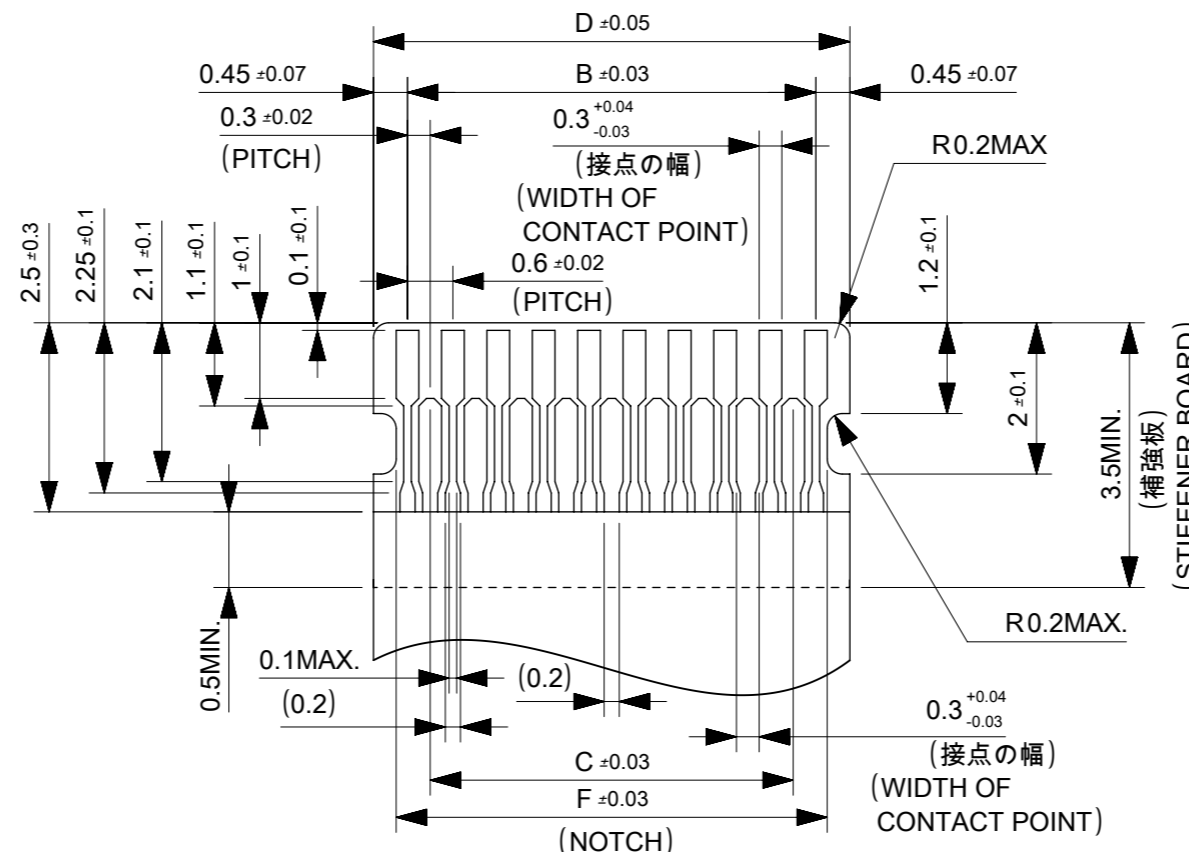
マスク厚：0.1mm MASK THICKNESS：0.1mm

なお,貴社にて上記以外でご使用頂く場合は,事前に確認頂きますようお願い致します。

WHEN USE IT OTHER THAN THE ABOVE IN YOUR COMPANY,
PLEASE CONFIRM IT BEFOREHAND.

6. ELV 及び RoHS適合品

ELV AND RoHS COMPLIANT.



嵌合FPC推奨寸法
APPLICABLE FPC
RECOMMENDED DIMENSION

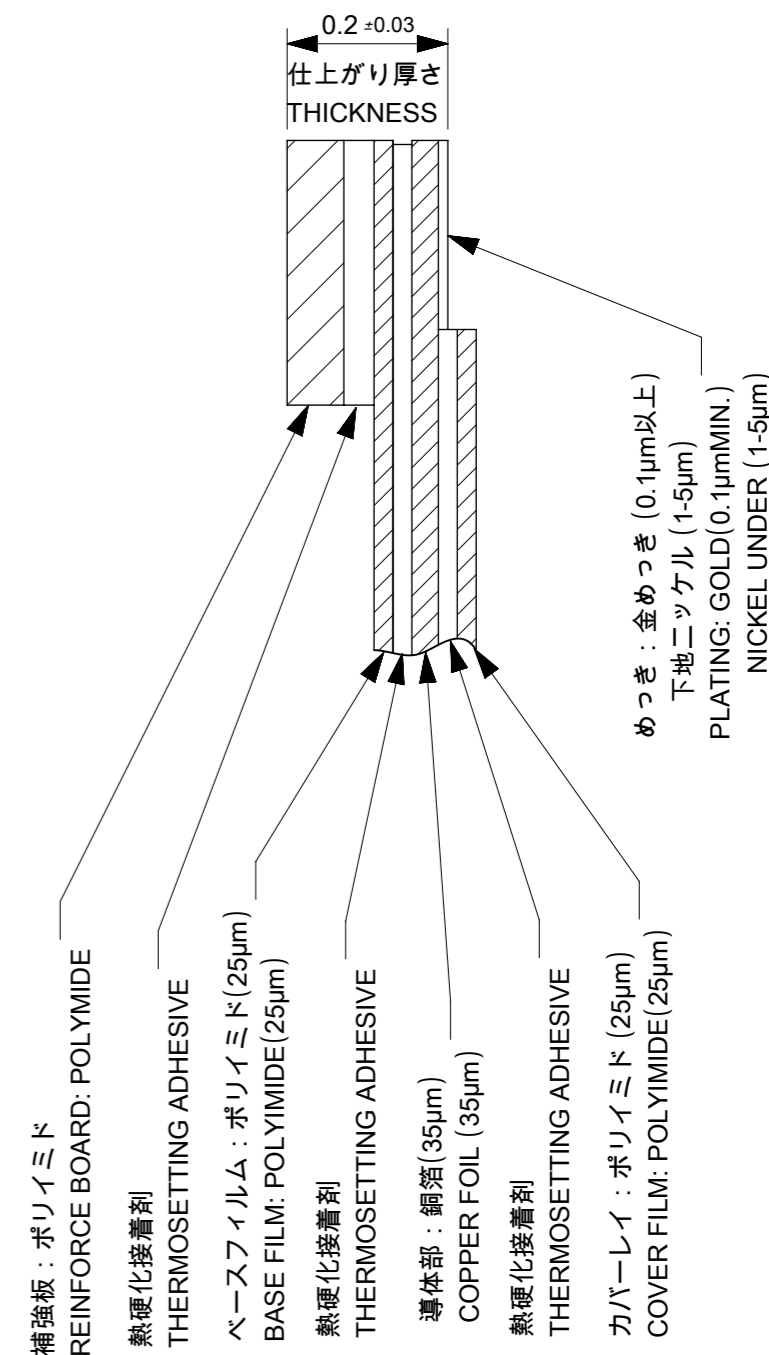
(仕上がり厚さ：0.2±0.03)
(THICKNESS:0.2±0.03)

FPCについて：

抜き方向は,導体側から補強板側を推奨致します。
補強フィルム材質は,ポリイミドを推奨致します。
接着剤は熱硬化接着剤を推奨します。
尚,接着剤の接触部への付着は導通不良の原因になりますので,
染み出しが無い様,お願い致します。

ABOUT FPC:

RECOMMENDED PUNCHER DIRECTION:
FROM CONDUCTOR SIDE TO STIFFNER FILM SIDE.
RECOMMENDED MATERIAL:
STIFFENER FILM : POLYIMIDE
BONDING AGENT : THERMOSETTING AGENT
PLEASE PUT APPROPRIATE AMOUNT OF ADHESIVE ON ADHEREND
BECAUSE THERE IS A POSSIBILITY THAT THE EXTRA ADHESIVE
CAUSES THE DEFECT IN ELECTRICAL CONTINUITY.



FPC構成推奨仕様
STRUCTURE OF FPC

THIS DRAWING CONTAINS INFORMATION THAT IS PROPRIETARY TO MOLEX ELECTRONIC TECHNOLOGIES, LLC AND SHOULD NOT BE USED WITHOUT WRITTEN PERMISSION

EC NO: 104567 DRWN: RLALSANGI CHK'D: KTAKAHASHI APPR: TKUSUHARA01	2016/01/28	GENERAL TOLERANCES (UNLESS SPECIFIED)	DIMENSION UNITS	SCALE				
	2016/05/09		MM	15:1				
	2016/05/09		ANGULAR TOL ± 3.0 °	DRWN BY		DATE		
	4 PLACES ± 0.2		RLALSANGI	2016/01/28				
	3 PLACES ± 0.2		CHK'D BY	DATE	0.3 FPC CONN E/O B/F HSG ASSY HGT=0.9MM(DUAL CONTACT)			
	2 PLACES ± 0.25		KTAKAHASHI	2016/05/09				
	1 PLACE ± 0.3		APPR BY	DATE				
	0 PLACES ± 0.3		TKUSUHARA01	2016/05/09				
	DRAFT WHERE APPLICABLE MUST REMAIN WITHIN DIMENSIONS		DRAWING SIZE	THIRD ANGLE PROJECTION	PRODUCT CUSTOMER DRAWING			
			A3		SERIES	MATERIAL NUMBER	CUSTOMER	
					502250	SEE CHART	GENERAL MARKET	
					DOCUMENT NUMBER	DOC TYPE	DOC PART	SHEET NUMBER
					5022501003	PSD	000	2 OF 2