

NOTES: 1. MATERIAL:

HOUSING: POLYESTER, G.F. (UL 94V-0), COLOUR - BLACK.
 TERMINAL: PHOSPHOR BRONZE.

2. TERMINAL PLATING:

90635-***1 : CONTACT AREA: GOLD FLASH (0.1um)/ 4uIn MIN.
 I.D. AREA: TIN (1um)/ 39uIn MIN. OVER
 NICKEL (1um)/ 39uIn MIN.

90635-***2 : CONTACT AREA: GOLD (0.76um)/ 30uIn MIN
 I.D. AREA: TIN (1um)/ 39uIn MIN. OVER
 NICKEL (1um)/ 39uIn MIN.

90635-***3 : CONTACT AREA: GOLD (0.38um)/ 15uIn MIN
 I.D. AREA: TIN (1um)/ 39uIn MIN. OVER
 NICKEL (1um)/ 39uIn MIN.

90635-***4 : CONTACT AREA: GOLD (0.51um)/ 20uIn MIN
 I.D. AREA: TIN (1um)/ 39uIn MIN. OVER
 NICKEL (1um)/ 39uIn MIN.. 20 & 50 CIRCUIT SIZES ONLY

3. FOR USE WITH No. 26 & 28 AWG STRANDED WIRE (7 CONDUCTORS)
 AND No. 28 SOLID WIRE 1.14/(.045) DIA. MAX. INSULATION RIBBON
 CABLE WITH 1.27/(.050) CENTERS.

4. MATING STRAIN RELIEF: MOLEX No. 90170.

5. DIMENSION "E" IS TOTAL HEIGHT AFTER ASSEMBLED WITH CABLE.

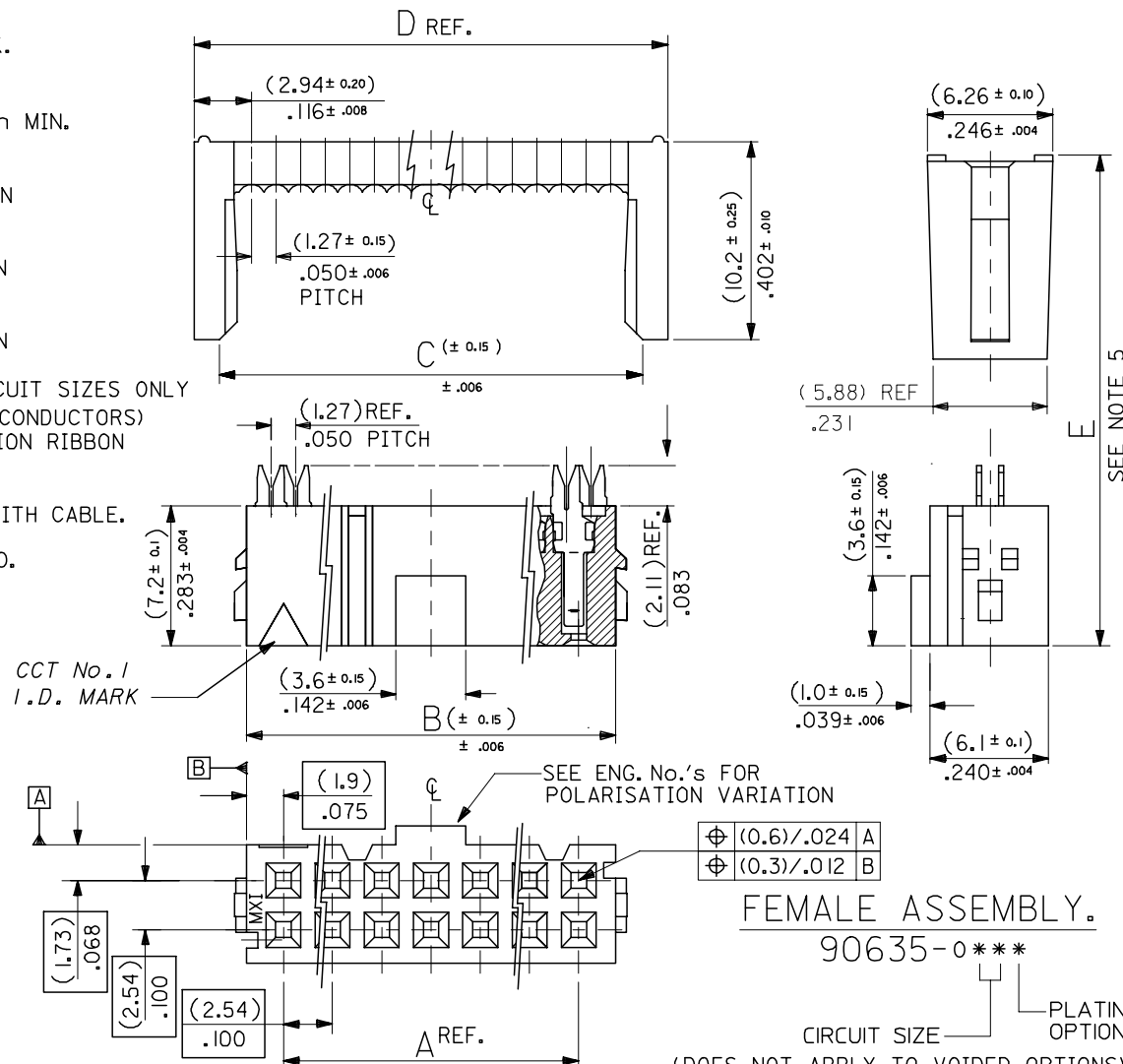
E = 10.5/(.413) REF. WITHOUT STRAIN RELIEF.

E = (15.2)/.598 MAX. WITH STRAIN RELIEF No. 90170.

(14.5)/.571 REF. WHEN COMPRESSED .

6. FOR PRODUCT SPECIFICATION, SEE PS 99020-0015.

NO. OF CKT.	ENG. NO.	A	B	C	D REF.
64	90635-64*	(78.74) 3.100	(82.54) 3.250	(83.31) 3.280	(85.88) 3.381
60	90635-60*	(73.66) 2.900	(77.46) 3.050	(78.23) 3.080	(80.80) 3.181
50	90635-50*	(60.96) 2.400	(64.76) 2.55	(65.53) 2.580	(68.10) 2.681
40	90635-40*	(48.26) 1.900	(52.06) 2.050	(52.83) 2.080	(55.40) 2.181
34	90635-34*	(40.64) 1.600	(44.44) 1.750	(45.21) 1.780	(47.78) 1.881
30	90635-30*	(35.56) 1.400	(39.36) 1.550	(40.13) 1.580	(42.70) 1.681
26	90635-26*	(30.48) 1.200	(34.28) 1.350	(35.05) 1.380	(37.62) 1.481
24	90635-24*	(27.94) 1.100	(31.74) 1.250	(32.51) 1.280	(35.08) 1.381
20	90635-20*	(22.86) .900	(26.66) 1.050	(27.43) 1.080	(30.00) 1.181
16	90635-16*	(17.78) .700	(21.58) .850	(22.35) .880	(24.92) .981
14	90635-14*	(15.24) .600	(19.04) .750	(19.81) .780	(22.38) .881
10	90635-10*	(10.16) .400	(13.96) .550	(14.73) .580	(17.30) .681



FEMALE ASSEMBLY.
 90635-0***
 PLATING OPTION
 CIRCUIT SIZE
 (DOES NOT APPLY TO VOIDED OPTIONS)

REMOVED POLARISATION EC NO: E2007-0495	DRWN:DBYRNES 2006/12/06	CHKD: 2006/12/07	APPR:EDMAMONY 2006/12/07	DESCRIPTION	QUALITY SYMBOLS	GENERAL TOLERANCES (UNLESS SPECIFIED)		DIMENSION STYLE		SCALE	DESIGN UNITS	THIRD ANGLE PROJECTION
						MM	INCH	MM/IN	MM/IN			
						4 PLACES	± ---	± ---	DRAWN BY	DATE	TITLE	
						3 PLACES	± ---	± ---	POB	1990/09/25	QIK FLECS SINGLE BEAM FEMALE ASSEMBLY	
						2 PLACES	± ---	± ---	CHECKED BY	DATE		
						1 PLACE	± ---	± ---	JDENNEHY	2005/08/10		
						ANGULAR	± ---°	± ---°	APPROVED BY	DATE		
									JDENNEHY	2005/08/10	MOLEX MOLEX INCORPORATED	
									MATERIAL NO.	DOCUMENT NO.		SHEET NO.
									SEE CHART	SDA-90635		1 OF 3
									THIS DRAWING CONTAINS INFORMATION THAT IS PROPRIETARY TO MOLEX INCORPORATED AND SHOULD NOT BE USED WITHOUT WRITTEN PERMISSION			