

NOTES: 1. MATERIAL:

HOUSING: POLYESTER, G.F. (UL 94V-0), COLOUR - BLACK.
 TERMINAL: PHOSPHOR BRONZE.

2. TERMINAL PLATING:

90635-***1 : CONTACT AREA: GOLD FLASH (0.1um)/ 4uIn MIN.

I.D. AREA: TIN (1um)/ 39uIn MIN. OVER

NICKEL (1um)/ 39uIn MIN.

90635-***2 : CONTACT AREA: GOLD (0.76um)/ 30uIn MIN

I.D. AREA: TIN (1um)/ 39uIn MIN. OVER

NICKEL (1um)/ 39uIn MIN.

90635-***3 : CONTACT AREA: GOLD (0.38um)/ 15uIn MIN

I.D. AREA: TIN (1um)/ 39uIn MIN. OVER

NICKEL (1um)/ 39uIn MIN.

90635-***4 : CONTACT AREA: GOLD (0.51um)/ 20uIn MIN

I.D. AREA: TIN (1um)/ 39uIn MIN. OVER

NICKEL (1um)/ 39uIn MIN.. 20 & 50 CIRCUIT SIZES ONLY

3. FOR USE WITH No. 26 & 28 AWG STRANDED WIRE (7 CONDUCTORS)
 AND No. 28 SOLID WIRE 1.14/(.045) DIA. MAX. INSULATION RIBBON
 CABLE WITH 1.27/(.050) CENTERS.

4. MATING STRAIN RELIEF: MOLEX No. 90170.

5. DIMENSION "E" IS TOTAL HEIGHT AFTER ASSEMBLED WITH CABLE.

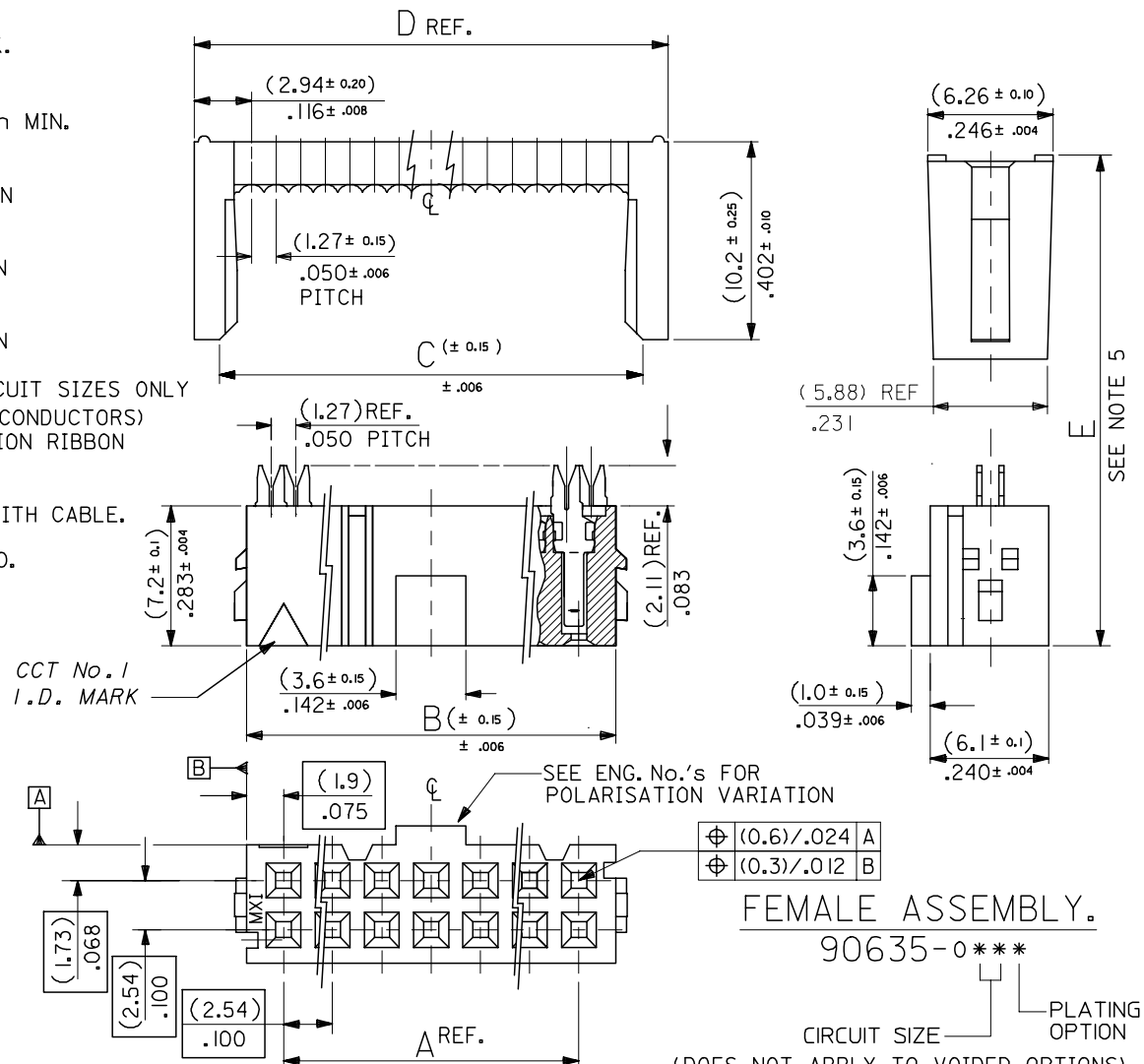
E = 10.5/(.413) REF. WITHOUT STRAIN RELIEF.

E = (15.2)/.598 MAX. WITH STRAIN RELIEF No. 90170.

(14.5)/.571 REF. WHEN COMPRESSED .

6. FOR PRODUCT SPECIFICATION, SEE PS 99020-0015.

64	90635-64*	(78.74) 3.100	(82.54) 3.250	(83.31) 3.280	(85.88) 3.381
60	90635-60*	(73.66) 2.900	(77.46) 3.050	(78.23) 3.080	(80.80) 3.181
50	90635-50*	(60.96) 2.400	(64.76) 2.55	(65.53) 2.580	(68.10) 2.681
40	90635-40*	(48.26) 1.900	(52.06) 2.050	(52.83) 2.080	(55.40) 2.181
34	90635-34*	(40.64) 1.600	(44.44) 1.750	(45.21) 1.780	(47.78) 1.881
30	90635-30*	(35.56) 1.400	(39.36) 1.550	(40.13) 1.580	(42.70) 1.681
26	90635-26*	(30.48) 1.200	(34.28) 1.350	(35.05) 1.380	(37.62) 1.481
24	90635-24*	(27.94) 1.100	(31.74) 1.250	(32.51) 1.280	(35.08) 1.381
20	90635-20*	(22.86) .900	(26.66) 1.050	(27.43) 1.080	(30.00) 1.181
16	90635-16*	(17.78) .700	(21.58) .850	(22.35) .880	(24.92) .981
14	90635-14*	(15.24) .600	(19.04) .750	(19.81) .780	(22.38) .881
10	90635-10*	(10.16) .400	(13.96) .550	(14.73) .580	(17.30) .681
NO. OF CKT.	ENG. NO.	A	B	C	D REF.



REMOVED POLARISATION EC NO: E2007-0495 DRWN:DBYRNES 2006/12/06 CHKD: 2006/12/07 APPR:EDMAMONY 2006/12/07	QUALITY SYMBOLS ▽=0 △=0	GENERAL TOLERANCES (UNLESS SPECIFIED)	DIMENSION STYLE		SCALE 4:1	DESIGN UNITS METRIC	THIRD ANGLE PROJECTION
			mm	INCH			
REV	DESCRIPTION	DRAFT WHERE APPLICABLE MUST REMAIN WITHIN DIMENSIONS	DRAWN BY		DATE	TITLE	SHEET NO.
			POB	1990/09/25			
REV	DESCRIPTION	DRAFT WHERE APPLICABLE MUST REMAIN WITHIN DIMENSIONS	CHECKED BY		DATE	MOLEX MOLEX INCORPORATED	SHEET NO.
			JDENNEHY	2005/08/10			
REV	DESCRIPTION	DRAFT WHERE APPLICABLE MUST REMAIN WITHIN DIMENSIONS	APPROVED BY		DATE	MOLEX MOLEX INCORPORATED	SHEET NO.
			JDENNEHY	2005/08/10			
REV	DESCRIPTION	DRAFT WHERE APPLICABLE MUST REMAIN WITHIN DIMENSIONS	MATERIAL NO.		DATE	MOLEX MOLEX INCORPORATED	SHEET NO.
			SEE CHART	2005/08/10			
REV	DESCRIPTION	DRAFT WHERE APPLICABLE MUST REMAIN WITHIN DIMENSIONS	SIZE		DATE	MOLEX MOLEX INCORPORATED	SHEET NO.
			A3	THIS DRAWING CONTAINS INFORMATION THAT IS PROPRIETARY TO MOLEX INCORPORATED AND SHOULD NOT BE USED WITHOUT WRITTEN PERMISSION			