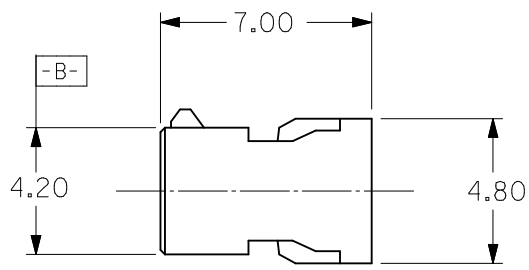
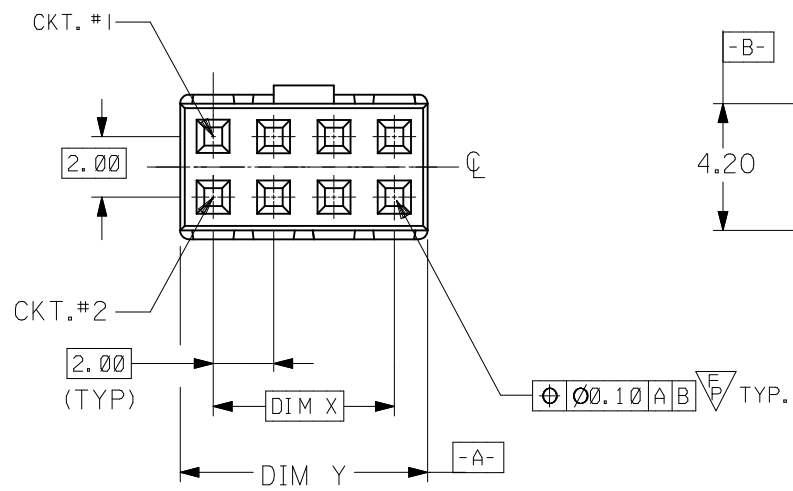
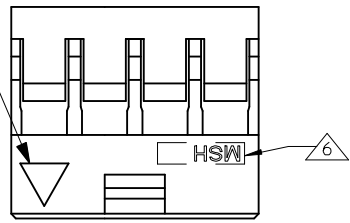


10 9 8 7 6 5 4 3 2 1

PART NUMBER	CKT SIZE	DIM X	DIM Y
51110-0460	4	2.00	4.20
51110-0660	6	4.00	6.20
51110-0860	8	6.00	8.20
51110-1060	10	8.00	10.20
51110-1260	12	10.00	12.20

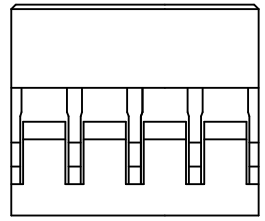
IST CIRCUIT IDENTIFICATION



**LEGEND:**

51110 - \*\*60  
 └── CKT SIZE

- NOTES :
1. MATERIAL : GLASS FILLED POLYESTER UL RATED 94V-0, COLOUR BLACK.
  2. FOR ILLUSTRATION PURPOSES, 8CKT CKT SIZE HOUSING IS AS SHOWN.
  3. PARTS TO BE USED WITH CRIMP TERMINAL PART NUMBER: 50394-8\*\*\*.
  4. APPLICABLE WIRE RANGE : AWG # 24 - #30"
  5. WIRE INSULATION RANGE : DIAMETER 1.40MM MAXIMUM.
- △ MSH LOGO, CAVITY ID AND 1ST CKT IDENTIFICATION TO BE LOCATED APPROXIMATELY AS SHOWN.



CHG MFG LOGO EC NO: S2015-0352 DRW:NATSEE 2014/12/09 CHKD:COLYNN GOH 2014/12/09 APPR:KHLJM 2014/12/19	DESCRIPTION REV A1	QUALITY SYMBOLS	GENERAL TOLERANCES (UNLESS SPECIFIED)		DIMENSION STYLE MM ONLY		SCALE NTS	DESIGN UNITS METRIC	THIRD ANGLE PROJECTION		
		$F_A=0$ $F_C=0$ $F_P=1$	mm	INCH	DRAWN BY SEE	DATE 1995/05/22	TITLE 2MM GRID,WTB CONN. CRIMP RECEPT. HSG.				SHEET NO. 1 OF 1
		4 PLACES	± ---	± ---	CHECKED BY SK TOH	DATE 1995/08/15	DOCUMENT NO. SD-51110-**60				
		3 PLACES	± ---	± ---	APPROVED BY	DATE	MATERIAL NO. SEE TABLE		THIS DRAWING CONTAINS INFORMATION THAT IS PROPRIETARY TO MOLEX INCORPORATED AND SHOULD NOT BE USED WITHOUT WRITTEN PERMISSION		
DRAFT WHERE APPLICABLE MUST REMAIN WITHIN DIMENSIONS		ANGULAR ± 3°		SIZE A3							

9 8 7 6 5 4 3 2 1