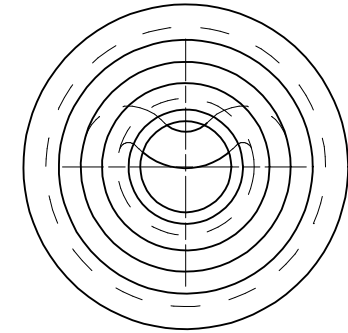
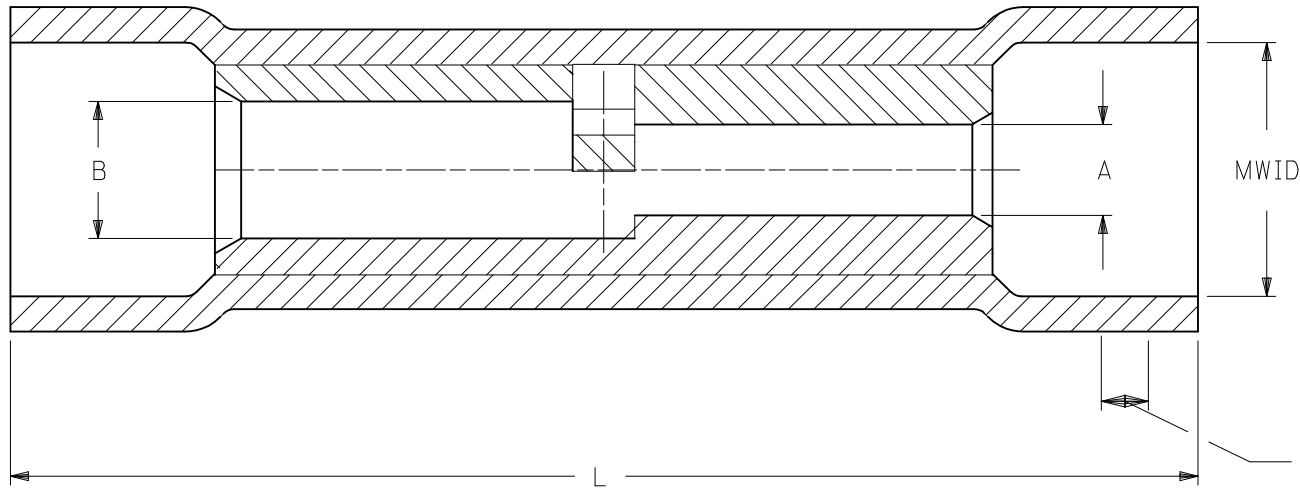
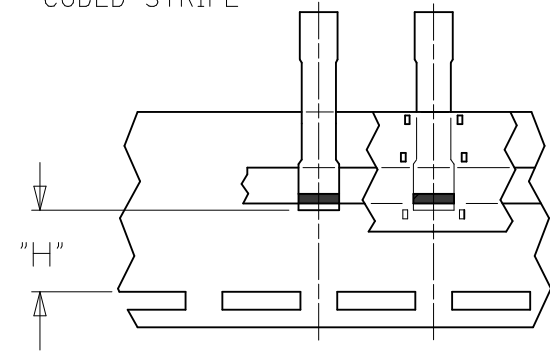


| 6 | | 5 | | 4 | | 3 | | 2 | | 1 | | |
|--------------|-----------|-------------------|-----------|-------------|-------------|-------|-----------|-------|-----------|----------|-----------|----------|
| LOOSE PIECE | | (A1) TAPE MOUNTED | | INSULATION | CODE STRIPE | "A" | | "B" | | MWID | "L" MAX. | "H" |
| MATERIAL NO. | ENG'G P/N | MATERIAL NO. | ENG'G P/N | COLOR (REF) | COLOR (REF) | AWG. | MIN. DIA. | AWG. | MIN. DIA. | | | ±.03/0.8 |
| 191540022 | BA-63IX | 191540057 | BA-63IXT | BLUE | RED | 22-18 | .065/1.65 | 16-14 | .088/2.24 | .17/4.3 | 1.08/27.4 | .42/10.7 |
| 191540035 | CB-646X | 191540036 | CB-646XT | YELLOW | BLUE | 16-14 | .091/2.31 | 12-10 | .137/3.48 | .26/6.6 | 1.30/33.0 | .35/8.9 |
| 191540044 | DC-654X | 191540043 | DC-654XT | RED | YELLOW | 12-10 | .138/3.50 | #8 | .165/4.19 | .33/8.4 | 1.50/38.1 | - |
| 191540047 | ED-662X | - | | BLUE | RED | #8 | .175/4.44 | #6 | .222/5.64 | .43/10.9 | 1.84/46.7 | - |



APPROXIMATE
LOCATION OF COLOR
CODED STRIPE



PARTS ON TAPE

NOTES:

- MATERIALS:
 SPLICE: MATTE-TIN PLATED COPPER
 INSULATION: PVC, COLOR PER CHART
- MWID = MAXIMUM WIRE INSULATION WIRE DIAMETER
- PARTS ARE ROHS COMPLIANT.

SALES DRAWING

REDRAWN FROM DOC CD-21001

| | | | | | | | | | |
|--|--|---------------------------------------|-------|--|----|--|-------------------------|--|--|
| ADD MAT'L NUMBER EC NO: WNA2011-0305 DRWN:GROJAS01 2013/03/01 CHKD: APPR:JMACNEIL 2013/04/24 DESCRIPTION REV | QUALITY SYMBOLS | GENERAL TOLERANCES (UNLESS SPECIFIED) | | DIMENSION STYLE IN/MM | | SCALE --- | DESIGN UNITS INCH | THIRD ANGLE PROJECTION | |
| | $\blacktriangledown = 0$ $\nabla C = 0$ | 4 PLACES | ± --- | ± --- | mm | INCH | DRAWN BY RCM | DATE 1991/10/28 | TITLE STEP DOWN BUTT SPLICE INSULKRIMP |
| | | 3 PLACES | ± --- | ± --- | | | CHECKED BY | DATE | |
| | | 2 PLACES | ± --- | ± --- | | | APPROVED BY JMACNEIL | DATE 2011/04/27 | |
| | | 1 PLACE | ± --- | ± --- | | | | | |
| | | ANGULAR ± ---° | | DRAFT WHERE APPLICABLE MUST REMAIN WITHIN DIMENSIONS | | MATERIAL NO. SEE CHART | | MOLEX INCORPORATED DOCUMENT NO. SD-19154-007 | |
| | | | | SIZE A | | THIS DRAWING CONTAINS INFORMATION THAT IS PROPRIETARY TO MOLEX INCORPORATED AND SHOULD NOT BE USED WITHOUT WRITTEN PERMISSION | | SHEET NO. 1 OF 1 | |