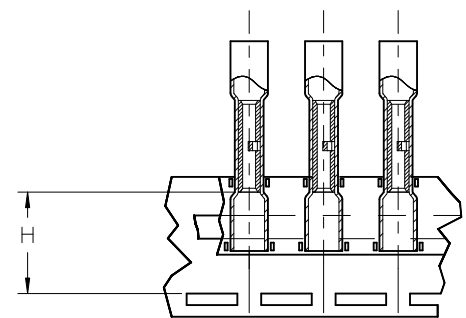
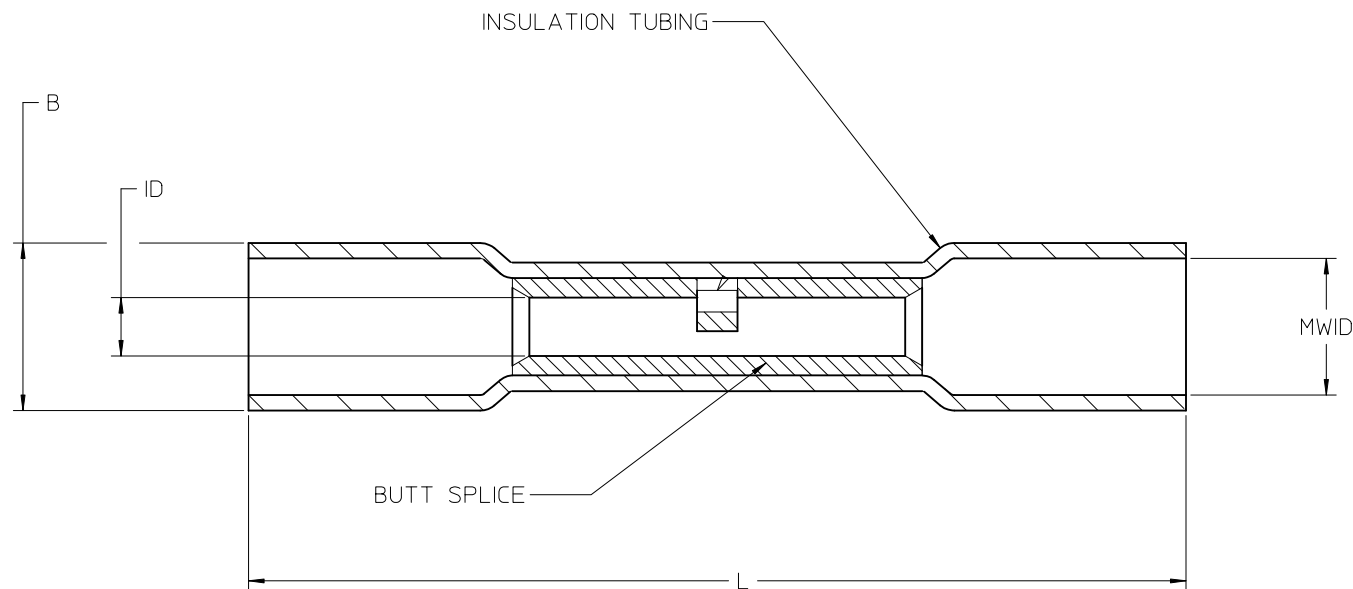


| LOOSE PIECE | | TAPE MOUNTED | | DIMENSIONS | | | | | APPEARANCE | |
|--------------|-----------------|--------------|-----------------|------------|-----------|-----------|-----------|------------|-------------|-----------|
| MATERIAL NO. | ENGINEERING P/N | MATERIAL NO. | ENGINEERING P/N | ID, MIN | MWID MIN | L MAX | B MAX | H ±.03/0.8 | COLOR (REF) | TEXT |
| 197170001 | HSAA-22-18 | 197170003 | HSAA-22-18T | .059/1.50 | .163/4.14 | 1.55/39.4 | .280/7.11 | .77/19.5 | RED | 22-18 AWG |
| 197170002 | HSBB-16-14 | 197170004 | HSBB-16-14T | .091/2.31 | .200/5.08 | 1.55/39.4 | .315/8.00 | .73/18.5 | BLUE | 16-14 AWG |

(A) (A)



PARTS ON TAPE

- NOTES:
- MATERIALS:
 SPLICE: SEAMLESS TIN-PLATED COPPER
 INSULATION: HEAT-SHRINKABLE POLY TUBING WITH HOT MELT INNER LINER
 - MWID = MAXIMUM WIRE INSULATION DIAMETER
 - PARTS ARE ROHS COMPLIANT.

| | | | | | | |
|--|---|---|---|--------------|---------------------|-----------------------------|
| IRLS, REV MWID, OD EC NO: WNA2011-0598 DRW: ETHRODAHL 2011/06/14 CHKD: JMACNEIL 2011/06/27 APPR: JMACNEIL 2011/07/05 | QUALITY SYMBOLS | GENERAL TOLERANCES (UNLESS SPECIFIED) | DIMENSION STYLE | SCALE | DESIGN UNITS | THIRD ANGLE PROJECTION |
| | ▼=0 ▽=0 | mm INCH 4 PLACES ± --- ± --- 3 PLACES ± --- ± .005 2 PLACES ± 0.13 ± .010 1 PLACE ± 0.25 ± .020 ANGULAR ± 1/2° | IN/MM DRAWN BY DATE ETHRODAHL 2011/05/31 CHECKED BY DATE JMACNEIL 2011/05/31 APPROVED BY DATE JMACNEIL 2011/05/31 | --- | INCH | Molex MOLEX INCORPORATED |
| | DRAFT WHERE APPLICABLE MUST REMAIN WITHIN DIMENSIONS | SEE CHART | MATERIAL NO. DOCUMENT NO. | SD-19717-001 | SHEET NO. 1 OF 1 | |
| | THIS DRAWING CONTAINS INFORMATION THAT IS PROPRIETARY TO MOLEX INCORPORATED AND SHOULD NOT BE USED WITHOUT WRITTEN PERMISSION | | | | | |