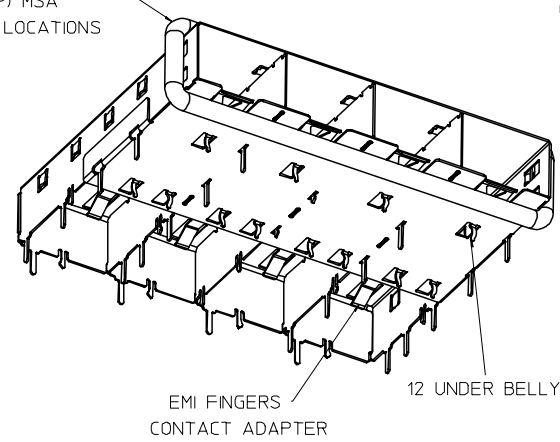
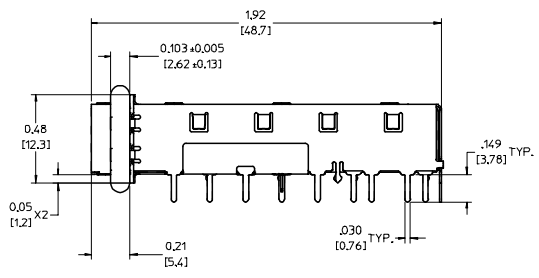
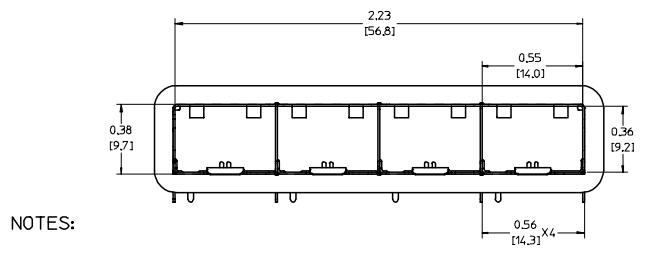
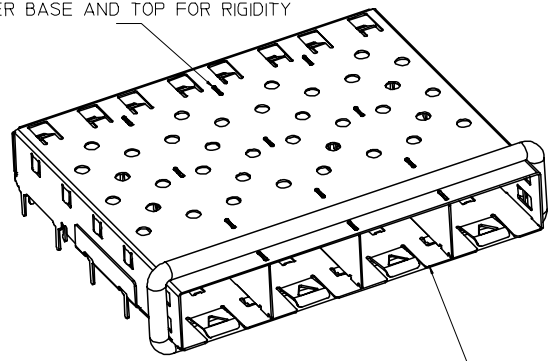


360° ELASTOMER GASKET COMPLIES WITH (SFP) MSA BOARD AND BEZEL LOCATIONS



INNER WALL TABS ARE COINED OVER BASE AND TOP FOR RIGIDITY



NOTES:  
 SOLDER POSTS .145' LONG -  
 .062 [1.57] MINIMUM PCB THICKNESS FOR SINGLE SIDED USE.  
 .150 [3.81] MINIMUM PCB THICKNESS FOR BELLY TO BELLY USE.  
 REFER TO DOCUMENT SD-74728-410 FOR DETAILS ON PCB LAYOUT, BOARD POSITIONING, AND BEZEL OPENING.  
 ADJACENT PORTS ARE SPACED .561 [14.25] APART.  
 MATERIAL: COPPER ALLOY.

EC NO: USY2005-0037 DRAWN: K SIMONSO 2004/10/09 CHKD: BRUSSELL 2004/10/09 APPR: BRUSSELL 2004/10/13	QUALITY SYMBOLS	GENERAL TOLERANCES (UNLESS SPECIFIED)		SCALE 3:1	DESIGN UNITS METRIC	THIRD ANGLE PROJECTION	REVISE ON CAD ONLY
	0 0	4 PLACES	± .005	± .005	DIMENSION STYLE IN/MM		TITLE 1X4 SFP CAGE ASSY, W/ 0.103 GASKET, SOLDER POST, F/ LIGHT PIPES
		3 PLACES	± .005	± .005	DRAWN BY K SIMONSO	DATE 2004/10/09	
		2 PLACES	± 0.13	± 0.01	CHECKED BY BRUSSELL	DATE 2004/10/09	MOLEX INCORPORATED MATERIAL NO. 747280412 DOCUMENT NO. SD-74728-412 SHEET NO. 1 OF 2
1 PLACE	± 0.25	± .005	ANGULAR ± 1°		DRAFT WHERE APPLICABLE MUST REMAIN WITHIN DIMENSIONS		
APPROVED BY BRUSSELL		DATE 2004/10/09		THIS DRAWING CONTAINS INFORMATION THAT IS PROPRIETARY TO MOLEX INCORPORATED AND SHOULD NOT BE USED WITHOUT WRITTEN PERMISSION			

20 | 19 | 18 | 17 | 16 | 15 | 14 | 13 | 12 | 11 | 74728 | 9 | 8 | 7 | 6 | 5 | 4 | 3 | 2 | 1

DATE	REV	CHANGES	COMMENTS
2004/10/09	A	INITIAL RELEASE	N/A

EC NO: USY2005-0037 P: DRW:KSIMONSO 2004/10/09 CHKD:BRUSSELL 2004/10/09 APPR:BRUSSELL 2004/10/13 REV: A	QUALITY SYMBOLS	GENERAL TOLERANCES (UNLESS SPECIFIED)	SCALE 1:1	DESIGN UNITS METRIC	THIRD ANGLE PROJECTION	REVISE ON CAD ONLY															
	▽-0	<table border="1"> <thead> <tr> <th></th> <th>mm</th> <th>INCH</th> </tr> </thead> <tbody> <tr> <td>4 PLACES</td> <td>±.0005</td> <td>±.0002</td> </tr> <tr> <td>3 PLACES</td> <td>±.001</td> <td>±.0004</td> </tr> <tr> <td>2 PLACES</td> <td>±.002</td> <td>±.0008</td> </tr> <tr> <td>1 PLACE</td> <td>±.005</td> <td>±.0020</td> </tr> </tbody> </table>		mm	INCH	4 PLACES	±.0005	±.0002	3 PLACES	±.001	±.0004	2 PLACES	±.002	±.0008	1 PLACE	±.005	±.0020	DIMENSION STYLE IN/MM		TITLE 1X4 SFP CAGE ASSY, W/ 0.103 GASKET, SOLDER POST, F/ LIGHT PIPES	
		mm	INCH																		
	4 PLACES	±.0005	±.0002																		
3 PLACES	±.001	±.0004																			
2 PLACES	±.002	±.0008																			
1 PLACE	±.005	±.0020																			
∇-0	ANGULAR ± 1°	DRAFT WHERE APPLICABLE MUST REMAIN WITHIN DIMENSIONS	DRAWN BY DATE KSIMONSO 2004/10/09		MOLEX INCORPORATED																
			CHECKED BY DATE BRUSSELL 2004/10/09		MATERIAL NO. 747280412																
			APPROVED BY DATE BRUSSELL 2004/10/09		DOCUMENT NO. SD-74728-412																
					SHEET NO. 2 OF 2																
			THIS DRAWING CONTAINS INFORMATION THAT IS PROPRIETARY TO MOLEX INCORPORATED AND SHOULD NOT BE USED WITHOUT WRITTEN PERMISSION																		

19 | 18 | 17 | 16 | 15 | 14 | 13 | 12 | 11 | 10 | 9 | 8 | 7 | 6 | 5 | 4 | 3 | 2 | 1