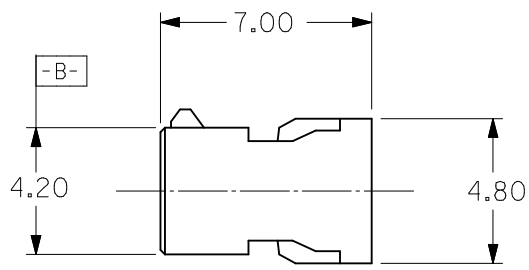
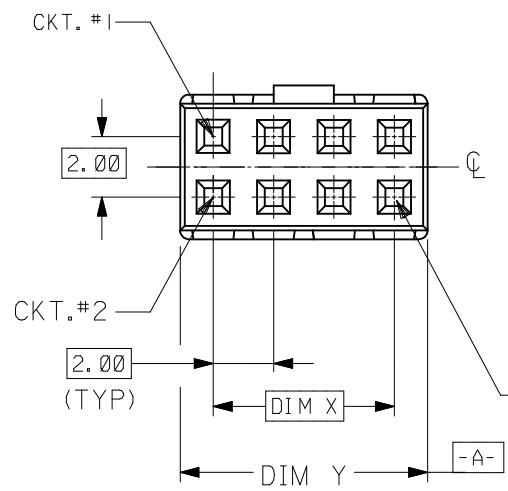
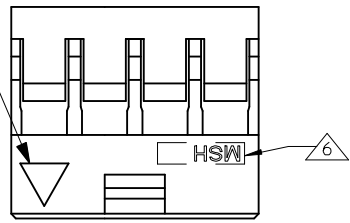


10 9 8 7 6 5 4 3 2 1

PART NUMBER	CKT SIZE	DIM X	DIM Y
51110-0460	4	2.00	4.20
51110-0660	6	4.00	6.20
51110-0860	8	6.00	8.20
51110-1060	10	8.00	10.20
51110-1260	12	10.00	12.20

IST CIRCUIT IDENTIFICATION

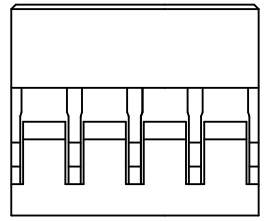


Ø 0.10 AB EP TYP.

LEGEND:

51110 - **60
 └── CKT SIZE

- NOTES :
1. MATERIAL : GLASS FILLED POLYESTER UL RATED 94V-0, COLOUR BLACK.
 2. FOR ILLUSTRATION PURPOSES, 8CKT CKT SIZE HOUSING IS AS SHOWN.
 3. PARTS TO BE USED WITH CRIMP TERMINAL PART NUMBER: 50394-8***.
 4. APPLICABLE WIRE RANGE : AWG # 24 - #30"
 5. WIRE INSULATION RANGE : DIAMETER 1.40MM MAXIMUM.
- △ MSH LOGO, CAVITY ID AND 1ST CKT IDENTIFICATION TO BE LOCATED APPROXIMATELY AS SHOWN.



CHG MFG LOGO EC NO: S2015-0352 DRW:NATSEE 2014/12/09 CHKD:COLYNN GOH 2014/12/09 APPR:KHLJM 2014/12/19	DESCRIPTION REV A1	QUALITY SYMBOLS	GENERAL TOLERANCES (UNLESS SPECIFIED)		DIMENSION STYLE MM ONLY		SCALE NTS	DESIGN UNITS METRIC	THIRD ANGLE PROJECTION
		$F_A=0$ $F_C=0$ $F_P=1$	mm	INCH	DRAWN BY SEE	DATE 1995/05/22	TITLE 2MM GRID,WTB CONN. CRIMP RECEPT. HSG.		
		4 PLACES ± --- ± ---	3 PLACES ± --- ± ---	2 PLACES ± 0.20 ± ---	1 PLACE ± --- ± ---	0 PLACE ± ±	CHECKED BY SK TOH	DATE 1995/08/15	
		ANGULAR ± 3 °		DRAFT WHERE APPLICABLE MUST REMAIN WITHIN DIMENSIONS		MATERIAL NO. SEE TABLE	DOCUMENT NO. SD-51110-**60	SHEET NO. 1 OF 1	
THIS DRAWING CONTAINS INFORMATION THAT IS PROPRIETARY TO MOLEX INCORPORATED AND SHOULD NOT BE USED WITHOUT WRITTEN PERMISSION									

9 8 7 6 5 4 3 2 1