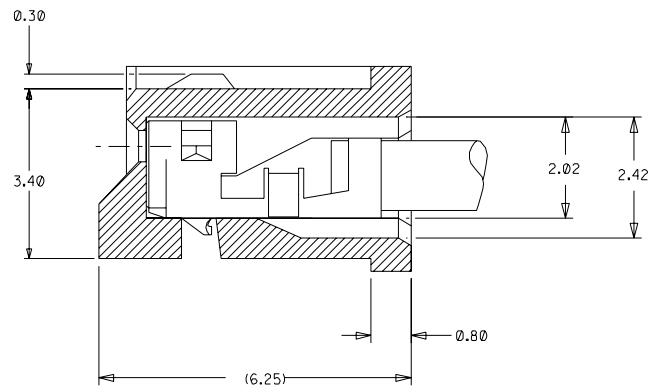
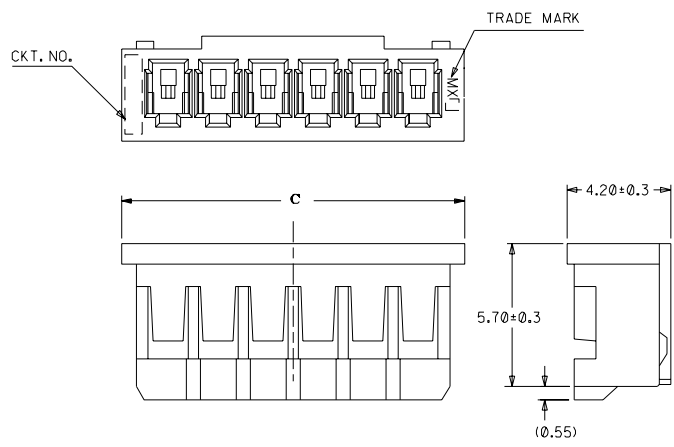


DWG. NO. SD 87369-\*\*-00

CAD FILE S87369.DGN

▽

DO NOT SCALE DRAWING



**TERMINAL ASSEMBLY DRAWING**  
(10:1)

**PART NO.LEGEND**

87369 - \*\* 0 \*

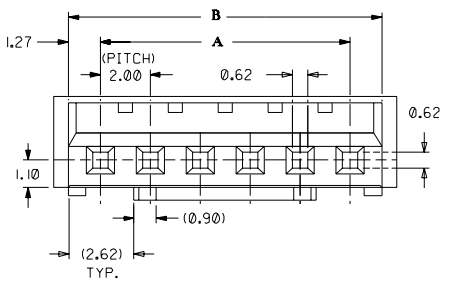
CKT SIZE ———— COLOR OPTION

0 - NATURAL  
1 - BLACK  
2 - RED  
3 - YELLOW  
4 - BLUE  
5 - GREEN

**NOTES**

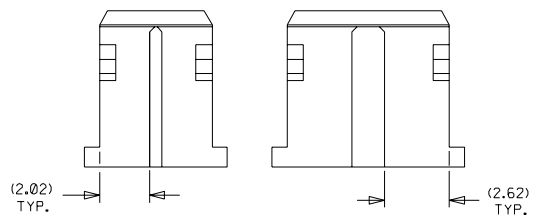
1. APPLICABLE TERMINAL :50212-8\*00
2. MATERIAL : NYLON 66, UL94V-0 NATURAL
3. MATES WITH 89400-\*\*-10/\*\*20 & 89401-\*\*-10

C	B	A	ENG NO.	CKT
33.74	32.54	30	87369-160*	16
31.74	30.54	28	87369-150*	15
29.74	28.54	26	87369-140*	14
27.74	26.54	24	87369-130*	13
25.74	24.54	22	87369-120*	12
23.74	22.54	20	87369-110*	11
21.74	20.54	18	87369-100*	10
19.74	18.54	16	87369-090*	9
17.74	16.54	14	87369-080*	8
15.74	14.54	12	87369-070*	7
13.74	12.54	10	87369-060*	6
11.74	10.54	8	87369-050*	5
9.74	8.54	6	87369-040*	4
7.74	6.54	4	87369-030*	3
5.74	4.54	2	87369-020*	2



**IN CASE OF  
2 CIRCUIT HSG.**

**IN CASE OF  
3 CIRCUIT HSG.**



**UNITS : MM**

				MATERIAL : SEE NOTES		MOLEX SINGAPORE PTE LTD SHEET 1 OF 1	
B5	REVISE PART NO. LEGEND & NOTE 3 PER ECN 1999-0061	-	SAK	980814	GENERAL TOLERANCES ± 0.20/0.008		REV B5
B4	REL 87369-**-05 (GREEN) AS PER PDR* 98-06-0330 (AS) PER ECN* S1998-0617)	-	SEE TOH	980623	DWG. NO.: SD   87369-**-0*		
B3	ADD COLOR OPTION REPLACE SD-87369-**-0*	S60565	SAK	960618	TITLE : 2.0 MM PITCH WIRE TO BOARD CONN. RECEPTACLE		
LTR	REVISION RECORD	ECN	DR	CHK	DATE	DRAWN BY CLEE 920305	CHK'D BY JOEY 920326
REVISE ONLY ON CAD SYSTEM						APPR'D BY ROY 920326	SCALE 5:1