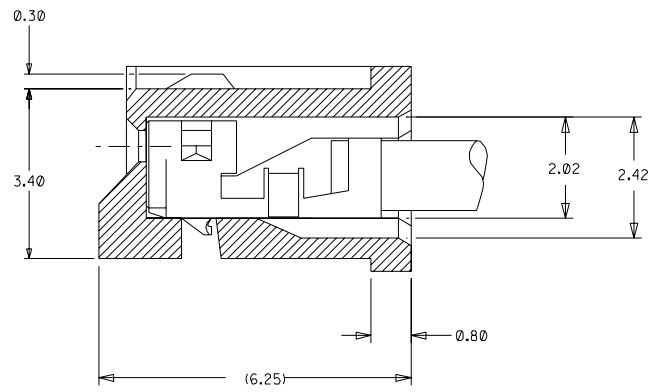
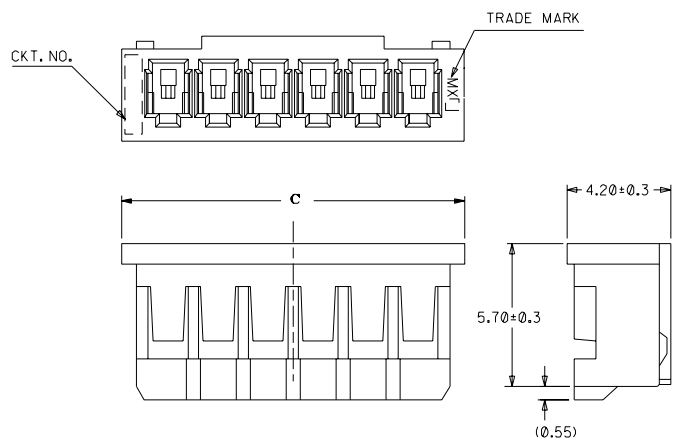


CAD FILE S87369.DGN  
 DWG. NO. SD 87369-\*\*-00



**TERMINAL ASSEMBLY DRAWING**  
 (10:1)

**PART NO.LEGEND**

87369 - \*\* 0 \*

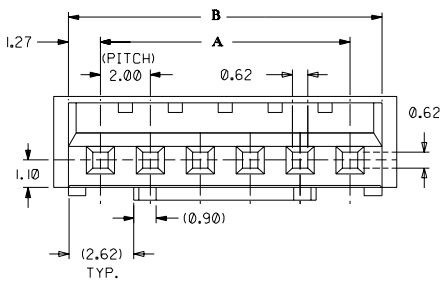
CKT SIZE ——— COLOR OPTION

- 0 - NATURAL
- 1 - BLACK
- 2 - RED
- 3 - YELLOW
- 4 - BLUE
- 5 - GREEN

**NOTES**

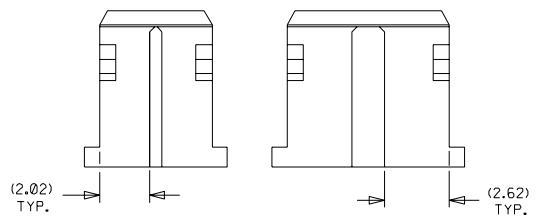
1. APPLICABLE TERMINAL : 50212-8\*00
2. MATERIAL : NYLON 66, UL94V-0 NATURAL
3. MATES WITH 89400-\*\*-10/\*\*20 & 89401-\*\*-10

C	B	A	ENG NO.	CKT
33.74	32.54	30	87369-160*	16
31.74	30.54	28	87369-150*	15
29.74	28.54	26	87369-140*	14
27.74	26.54	24	87369-130*	13
25.74	24.54	22	87369-120*	12
23.74	22.54	20	87369-110*	11
21.74	20.54	18	87369-100*	10
19.74	18.54	16	87369-090*	9
17.74	16.54	14	87369-080*	8
15.74	14.54	12	87369-070*	7
13.74	12.54	10	87369-060*	6
11.74	10.54	8	87369-050*	5
9.74	8.54	6	87369-040*	4
7.74	6.54	4	87369-030*	3
5.74	4.54	2	87369-020*	2



**IN CASE OF  
 2 CIRCUIT HSG.**

**IN CASE OF  
 3 CIRCUIT HSG.**



**UNITS : MM**

				MATERIAL : SEE NOTES		 MOLEX SINGAPORE PTE LTD SHEET 1 OF 1	
				FINISH : ---			
B5	REVISE PART NO. LEGEND & NOTE 3 PER ECN 1999-0061	-	SAK	980814			DWG. NO. : SD   87369-**-0*
B4	REL 87369-**-05 (GREEN) AS PER PDR* 98-06-0330 (AS PER ECN* S1998-0617)	-	SEE TOH	980623			TITLE : 2.0 MM PITCH WIRE TO BOARD CONN. RECEPTACLE
B3	ADD COLOR OPTION REPLACE SD-87369-**-0*	S60565	SAK	GMS	960618		
LTR	REVISION RECORD	ECN	DR	CHK	DATE	DRAWN BY CLEE 920305 APPR'D BY ROY 920326	CHK'D BY JOEY 920326 SCALE 5:1
<b>REVISE ONLY ON CAD SYSTEM</b>							

DO NOT SCALE DRAWING