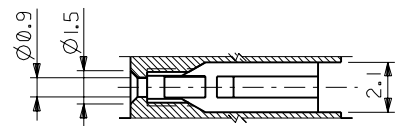
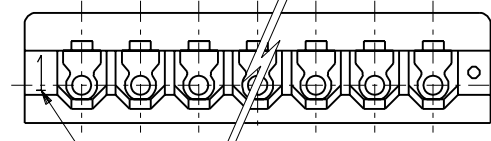
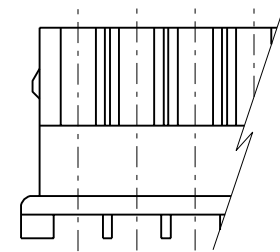
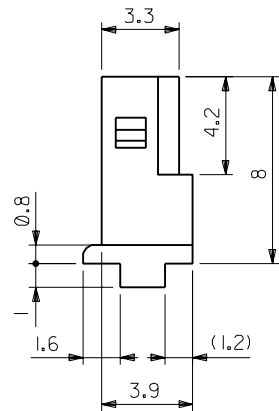
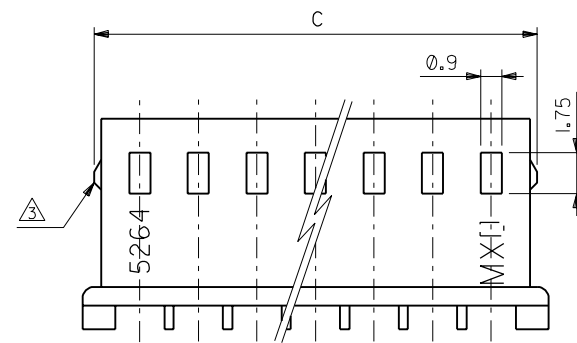


SECT.Z-Z



SECT.Y-Y



	50.8	47.5	20	
	48.3	45	19	
	45.8	42.5	18	
	43.3	40	17	
	40.8	37.5	16	
	38.3	35	15	
	35.8	32.5	14	
	33.3	30	13	
	30.8	27.5	12	
	28.3	25	11	
	25.8	22.5	10	
	23.3	20	9	
	21.4	20.8	17.5	8
	18.9	18.3	15	7
	16.4	15.8	12.5	6
	13.9	13.3	10	5
	11.4	10.8	7.5	4
	8.9	8.3	5	3
	6.4	5.8	2.5	2
DIM. C	DIM. B	DIM. A	NO. OF CKTS.	

角度 ANGLE		±3°				材料 MATERIAL		66NYLON, UL94V-0		molex MOLEX-JAPAN CO.,LTD. 日本モレックス株式会社	
30以上 OVER		+0.3				仕上げ FINISH		— —		REVISE ONLY ON CAD SYSTEM	
10以上 30未満 UNDER		+0.25		A		適用電線範囲 WIRE RANGE		— —		TITLE 名称	
10未満 UNDER		+0.2		0		被覆外径 INS. RANGE		— —		2.5 LOW PROFILE RECEPTACLE HOUSING (DYED COLOR)	
一般公差 GENERAL TOLERANCES		記号 LTR		変更内容 REVISION RECORD		DR. CHK.		DATE		DWG. NO. SHEET 1 OF 2 REV A	
				REVISED (J20819)		H.H. M.F. 2011/11		DRAWN BY 2011/11 K.I.OJO		CHK'D BY 2011/11 WHEHIBANMOTO	
				RELEASED (J20038)		K.T. H.H. 2011/11		APP'D BY 2011/11 M.FUKUSHIMA		尺度 SCALE 5 - 1	

DWG. NO. SHEET 2 OF 2
SD-5264-N-**-**

E

D

C
B
A
DIMENSIONS IN METRIC DO NOT SCALE DRAWING

F

E

D

C

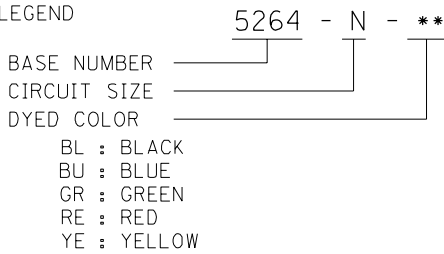
B

A

5264-N-32

NOTES

1. SUITABLE TERMINAL : 5263 SERIES
2. MATES WITH : 5267, 5268 SERIES
- △ 3 9 CIRCUITS OR MORE WITHOUT LOCK.
4. LEGEND



39-02-6205	5264-20-YE	39-02-6204	5264-20-RE	39-02-6203	5264-20-GR	39-02-6202	5264-20-BU	39-02-6201	5264-20-BL	20
▲ -6195	▲ -19-YE	▲ -6194	▲ -19-RE	▲ -6193	▲ -19-GR	▲ -6192	▲ -19-BU	▲ -6191	▲ -19-BL	19
-6185	-18-YE	-6184	-18-RE	-6183	-18-GR	-6182	-18-BU	-6181	-18-BL	18
-6175	-17-YE	-6174	-17-RE	-6173	-17-GR	-6172	-17-BU	-6171	-17-BL	17
-6165	-16-YE	-6164	-16-RE	-6163	-16-GR	-6162	-16-BU	-6161	-16-BL	16
-6155	-15-YE	-6154	-15-RE	-6153	-15-GR	-6152	-15-BU	-6151	-15-BL	15
-6145	-14-YE	-6144	-14-RE	-6143	-14-GR	-6142	-14-BU	-6141	-14-BL	14
-6135	-13-YE	-6134	-13-RE	-6133	-13-GR	-6132	-13-BU	-6131	-13-BL	13
-6125	-12-YE	-6124	-12-RE	-6123	-12-GR	-6122	-12-BU	-6121	-12-BL	12
-6115	-11-YE	-6114	-11-RE	-6113	-11-GR	-6112	-11-BU	-6111	-11-BL	11
-6105	-10-YE	-6104	-10-RE	-6103	-10-GR	-6102	-10-BU	-6101	-10-BL	10
-6095	-09-YE	-6094	-09-RE	-6093	-09-GR	-6092	-09-BU	-6091	-09-BL	9
-6085	-08-YE	-6084	-08-RE	-6083	-08-GR	-6082	-08-BU	-6081	-08-BL	8
-6075	-07-YE	-6074	-07-RE	-6073	-07-GR	-6072	-07-BU	-6071	-07-BL	7
-6065	-06-YE	-6064	-06-RE	-6063	-06-GR	-6062	-06-BU	-6061	-06-BL	6
-6055	-05-YE	-6054	-05-RE	-6053	-05-GR	-6052	-05-BU	-6051	-05-BL	5
-6045	-04-YE	-6044	-04-RE	-6043	-04-GR	-6042	-04-BU	-6041	-04-BL	4
▼ -6035	▼ -03-YE	▼ -6034	▼ -03-RE	▼ -6033	▼ -03-GR	▼ -6032	▼ -03-BU	▼ -6031	▼ -03-BL	3
39-02-6025	5264-02-YE	39-02-6024	5264-02-RE	39-02-6023	5264-02-GR	39-02-6022	5264-02-BU	39-02-6021	5264-02-BL	2
EDP NO.	ENG. NO.	EDP NO.	ENG. NO.	EDP NO.	ENG. NO.	EDP NO.	ENG. NO.	EDP NO.	ENG. NO.	NO. OF CKTS.
5264-N-YE		5264-N-RE		5264-N-GR		5264-N-BU		5264-N-BL		

<table border="1" style="width: 100%; border-collapse: collapse;"> <tr> <td>角度 ANGLE</td><td>±3°</td></tr> <tr> <td>30°以上 OVER</td><td>±0.3</td></tr> <tr> <td>10°以上 OVER 30° UNDER</td><td>±0.25</td></tr> <tr> <td>10° UNDER</td><td>±0.2</td></tr> <tr> <td>一般公差 GENERAL TOLERANCES</td><td>記号 LTR 変更内容 REVISION RECORD</td></tr> </table>		角度 ANGLE	±3°	30°以上 OVER	±0.3	10°以上 OVER 30° UNDER	±0.25	10° UNDER	±0.2	一般公差 GENERAL TOLERANCES	記号 LTR 変更内容 REVISION RECORD	<table border="1" style="width: 100%; border-collapse: collapse;"> <tr> <td>材料 MATERIAL</td><td>66NYLON, UL94V-0</td></tr> <tr> <td>仕上げ FINISH</td><td>—</td></tr> <tr> <td>適用電線範囲 WIRE RANGE</td><td>—</td></tr> <tr> <td>被覆外径 INS. RANGE</td><td>—</td></tr> <tr> <td>DRAWN BY 02/07 H.HIRAMOTO</td><td>CHK'D BY 02/07 H.HIRAMOTO</td></tr> <tr> <td>APP'D BY 02/07 M.HAKOSHIMA</td><td>尺 度 SCALE 5 - 1</td></tr> <tr> <td>DR. 日付 DATE</td><td>DR. 日付 DATE</td></tr> </table>	材料 MATERIAL	66NYLON, UL94V-0	仕上げ FINISH	—	適用電線範囲 WIRE RANGE	—	被覆外径 INS. RANGE	—	DRAWN BY 02/07 H.HIRAMOTO	CHK'D BY 02/07 H.HIRAMOTO	APP'D BY 02/07 M.HAKOSHIMA	尺 度 SCALE 5 - 1	DR. 日付 DATE	DR. 日付 DATE	<table border="1" style="width: 100%; border-collapse: collapse;"> <tr> <td colspan="2" style="text-align: center;"> MOLEX-JAPAN CO.,LTD. 日本モレックス株式会社 </td> </tr> <tr> <td colspan="2" style="text-align: center;"> REVISE ONLY ON CAD SYSTEM TITLE 名称 2.5 LOW PROFILE RECEPTACLE HOUSING (DYED COLOR) </td> </tr> <tr> <td>DWG. NO.</td><td>SHEET 2 OF 2</td></tr> <tr> <td>SD-5264-N-**-**</td><td>REV A</td></tr> </table>	MOLEX-JAPAN CO.,LTD. 日本モレックス株式会社		REVISE ONLY ON CAD SYSTEM TITLE 名称 2.5 LOW PROFILE RECEPTACLE HOUSING (DYED COLOR)		DWG. NO.	SHEET 2 OF 2	SD-5264-N-**-**	REV A
		角度 ANGLE	±3°																																
30°以上 OVER	±0.3																																		
10°以上 OVER 30° UNDER	±0.25																																		
10° UNDER	±0.2																																		
一般公差 GENERAL TOLERANCES	記号 LTR 変更内容 REVISION RECORD																																		
材料 MATERIAL	66NYLON, UL94V-0																																		
仕上げ FINISH	—																																		
適用電線範囲 WIRE RANGE	—																																		
被覆外径 INS. RANGE	—																																		
DRAWN BY 02/07 H.HIRAMOTO	CHK'D BY 02/07 H.HIRAMOTO																																		
APP'D BY 02/07 M.HAKOSHIMA	尺 度 SCALE 5 - 1																																		
DR. 日付 DATE	DR. 日付 DATE																																		
MOLEX-JAPAN CO.,LTD. 日本モレックス株式会社																																			
REVISE ONLY ON CAD SYSTEM TITLE 名称 2.5 LOW PROFILE RECEPTACLE HOUSING (DYED COLOR)																																			
DWG. NO.	SHEET 2 OF 2																																		
SD-5264-N-**-**	REV A																																		
<table border="1" style="width: 100%; border-collapse: collapse;"> <tr> <td>SEE SHEET 1 OF 2</td><td>H.H M.F 02/07</td></tr> <tr> <td>SEE SHEET 1 OF 2</td><td>K.T H.H 02/07</td></tr> </table>		SEE SHEET 1 OF 2	H.H M.F 02/07	SEE SHEET 1 OF 2	K.T H.H 02/07																														
SEE SHEET 1 OF 2	H.H M.F 02/07																																		
SEE SHEET 1 OF 2	K.T H.H 02/07																																		

8

7

6

5

4

3

2

1