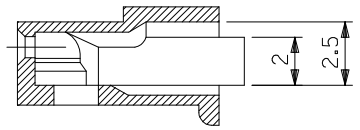
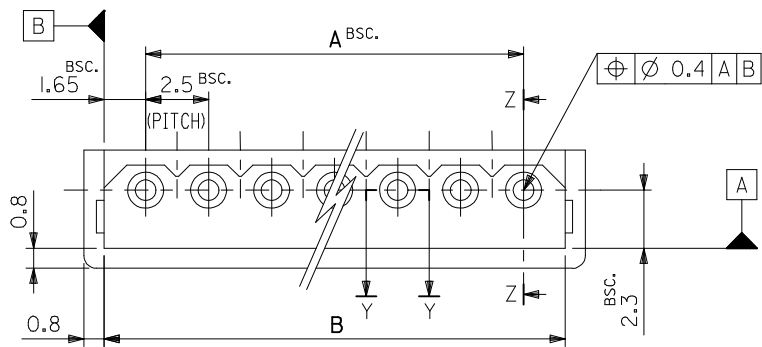
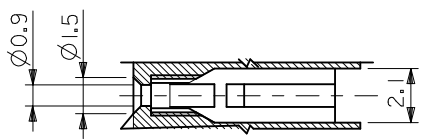


10 9 8 7 6 5 4 3 2 1

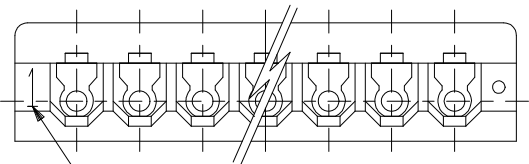
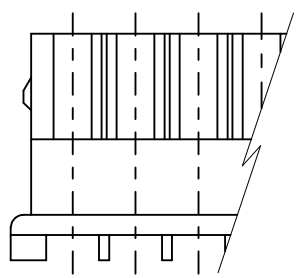
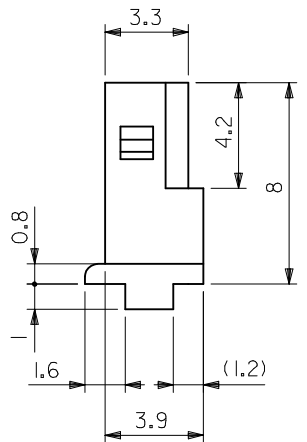
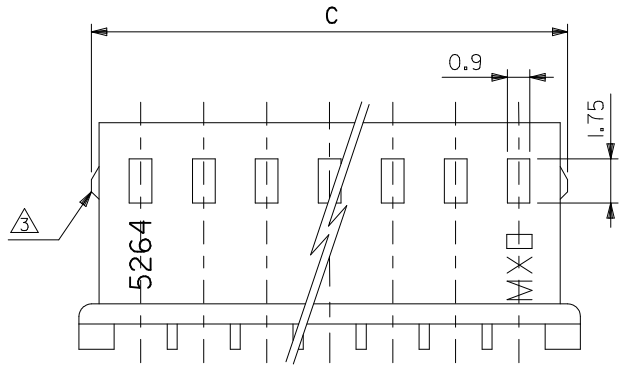
F
E
D
C
B
A



SECT.Z-Z



SECT.Y-Y



CIRCUIT NO.

18.9	18.3	15	7
11.4	10.8	7.5	4
8.9	8.3	5	3
6.4	5.8	2.5	2
DIM. C	DIM. B	DIM. A	NO. OF CKTS.

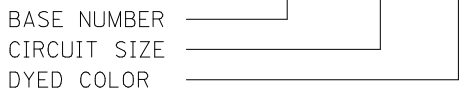
REVISED EC NO: J2014-1611 DRWN: TYAJIMA01 2014/05/27 CHKD: KASAKAWA 2014/05/30 APPR: NUKITA 2014/05/30	GENERAL TOLERANCES (UNLESS SPECIFIED)		DIMENSION STYLE MM ONLY		SCALE 5:1	DESIGN UNITS METRIC	THIRD ANGLE PROJECTION		
	10 UNDER ±0.2	10 OVER 30 UNDER ±0.25	DRAWN BY TYAJIMA01	DATE 2013/12/16	TITLE 2.5 LOW PROFILE RECEPTACLE HOUSING				
	30 OVER ±0.3	ANGULAR ±3 °	CHECKED BY KASAKAWA	DATE 2013/12/19	APPROVED BY NUKITA 2014/01/07				
	DRAFT WHERE APPLICABLE MUST REMAIN WITHIN DIMENSIONS		MATERIAL NO. 66NYLON, UL94V-0		DOCUMENT NO. SD-5264-002		SHEET NO. 1 OF 2		
		SIZE A3		THIS DRAWING CONTAINS INFORMATION THAT IS PROPRIETARY TO MOLEX INCORPORATED AND SHOULD NOT BE USED WITHOUT WRITTEN PERMISSION					

9 8 7 6 5 4 3 2

NOTES

- 1. SUITABLE TERMINAL : 5263 SERIES
- 2. MATES WITH : 5267, 5268 SERIES
- △ 9 CIRCUITS OR MORE WITHOUT LOCK.
- 4. LEGEND

5264 - N - **



- BL : BLACK
- BU : BLUE
- GR : GREEN
- RE : RED
- YE : YELLOW

				39-02-6073	5264-07-GR					7
		39-02-6044	5264-04-RE			39-02-6042	5264-04-BU	39-02-6041	5264-04-BL	4
39-02-6035	5264-03-YE			39-02-6033	5264-03-GR					3
39-02-6025	5264-02-YE	39-02-6024	5264-02-RE							2
EDP NO.	ENG. NO.	EDP NO.	ENG. NO.	EDP NO.	ENG. NO.	EDP NO.	ENG. NO.	EDP NO.	ENG. NO.	NO. OF CKTS.
5264-N-YE		5264-N-RE		5264-N-GR		5264-N-BU		5264-N-BL		

REVISED EC NO: J2014-1611 DRWN: TYAJIMA01 CHKD: KASAKAWA APPR: NUKITA	2014/05/27 2014/05/30 2014/05/30	DESCRIPTION GENERAL TOLERANCES (UNLESS SPECIFIED)	DIMENSION STYLE MM ONLY	SCALE ---	DESIGN UNITS METRIC	THIRD ANGLE PROJECTION	
	10 UNDER ±0.2 10 OVER 30 UNDER ±0.25 30 OVER ±0.3	DRAWN BY TYAJIMA01	DATE 2013/12/16	TITLE 2.5 LOW PROFILE RECEPTACLE HOUSING			
	ANGULAR ±3 ° DRAFT WHERE APPLICABLE MUST REMAIN WITHIN DIMENSIONS	CHECKED BY KASAKAWA	DATE 2013/12/19	MATERIAL NO. SEE SHEET1			
	D	APPROVED BY NUKITA	DATE 2014/01/07	DOCUMENT NO. SD-5264-002	SHEET NO. 2 OF 2		



THIS DRAWING CONTAINS INFORMATION THAT IS PROPRIETARY TO MOLEX
INCORPORATED AND SHOULD NOT BE USED WITHOUT WRITTEN PERMISSION