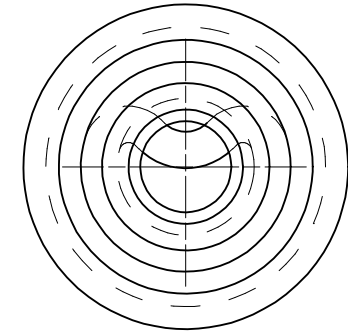
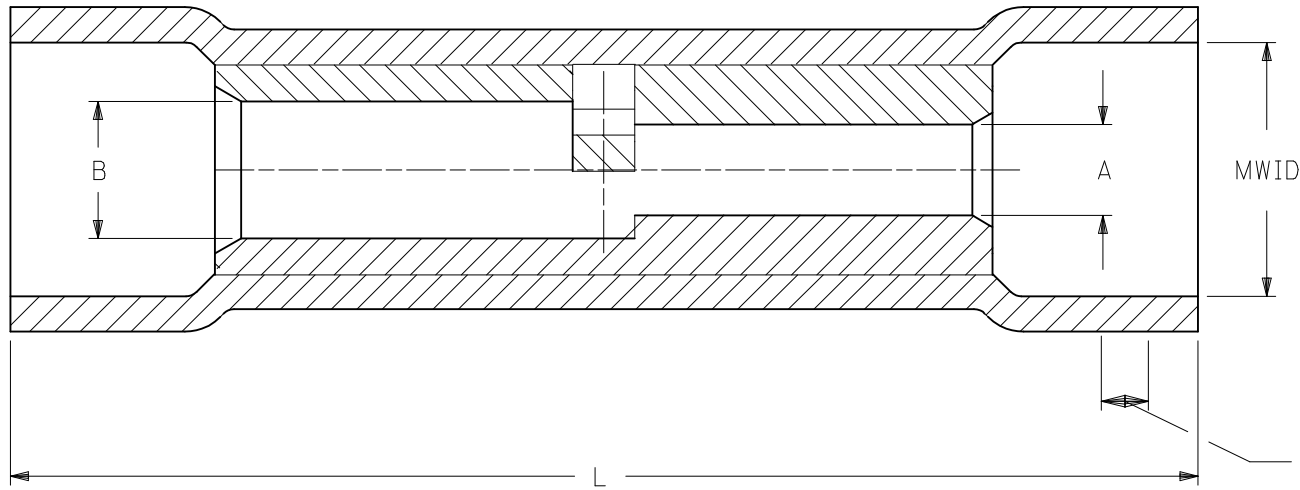
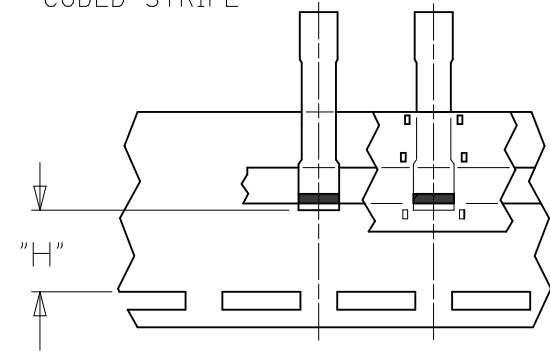


6		5		4		3		2		1		
LOOSE PIECE		(A1) TAPE MOUNTED		INSULATION	CODE STRIPE	"A"		"B"		MWID	"L" MAX.	"H"
MATERIAL NO.	ENG'G P/N	MATERIAL NO.	ENG'G P/N	COLOR (REF)	COLOR (REF)	AWG.	MIN. DIA.	AWG.	MIN. DIA.			±.03/0.8
191540022	BA-63IX	191540057	BA-63IXT	BLUE	RED	22-18	.065 / 1.65	16-14	.088 / 2.24	.17 / 4.3	1.08 / 27.4	.42 / 10.7
191540035	CB-646X	191540036	CB-646XT	YELLOW	BLUE	16-14	.091 / 2.31	12-10	.137 / 3.48	.26 / 6.6	1.30 / 33.0	.35 / 8.9
191540044	DC-654X	191540043	DC-654XT	RED	YELLOW	12-10	.138 / 3.50	#8	.165 / 4.19	.33 / 8.4	1.50 / 38.1	-
191540047	ED-662X	-		BLUE	RED	#8	.175 / 4.44	#6	.222 / 5.64	.43 / 10.9	1.84 / 46.7	-



APPROXIMATE LOCATION OF COLOR CODED STRIPE



PARTS ON TAPE

NOTES:

- MATERIALS:
 SPLICE: MATTE-TIN PLATED COPPER
 INSULATION: PVC, COLOR PER CHART
- MWID = MAXIMUM WIRE INSULATION WIRE DIAMETER
- PARTS ARE ROHS COMPLIANT.

SALES DRAWING

REDRAWN FROM DOC CD-21001

ADD MAT'L NUMBER EC NO: WNA2011-0305 DRWN: GROSAS01 2013/03/01 CHKD: JMACNEIL APPR: JMACNEIL 2013/04/24 A1 REV	QUALITY SYMBOLS	GENERAL TOLERANCES (UNLESS SPECIFIED)		DIMENSION STYLE IN/MM		SCALE ---	DESIGN UNITS INCH	THIRD ANGLE PROJECTION		
	=0 =0	4 PLACES ± ---	mm	INCH	DRAWN BY RCM	DATE 1991/10/28	TITLE STEP DOWN BUTT SPLICE INSULKRIMP			
		3 PLACES ± ---			CHECKED BY	DATE	MOLEX INCORPORATED DOCUMENT NO. SD-19154-007 SHEET NO. 1 OF 1			
		2 PLACES ± ---			APPROVED BY JMACNEIL	DATE 2011/04/27				
	1 PLACE ± ---			ANGULAR ± ---°		DRAFT WHERE APPLICABLE MUST REMAIN WITHIN DIMENSIONS SIZE A THIS DRAWING CONTAINS INFORMATION THAT IS PROPRIETARY TO MOLEX INCORPORATED AND SHOULD NOT BE USED WITHOUT WRITTEN PERMISSION				