

10

9

8

7

6

5

4

3

2

106123

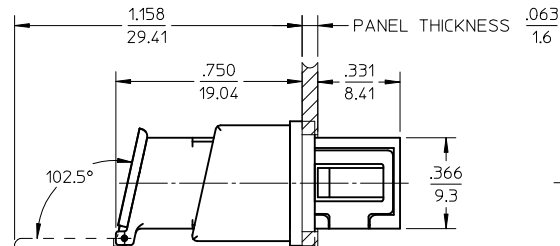
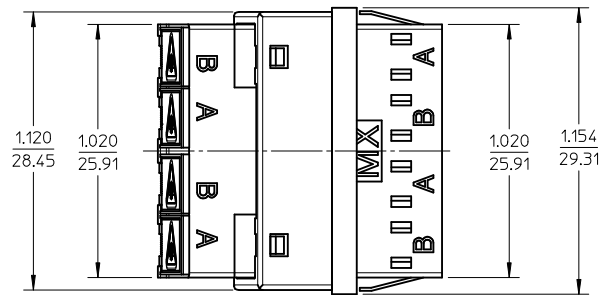
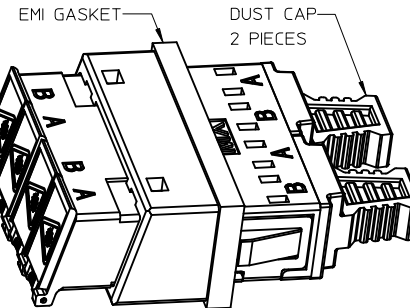
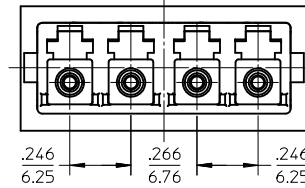
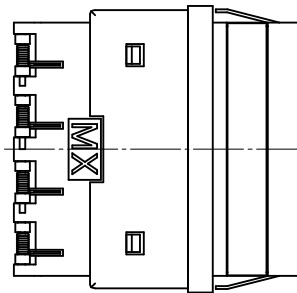
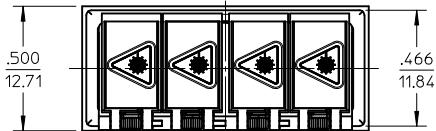
ADAPTER
P/NADAPTER
P/N

106123-0500

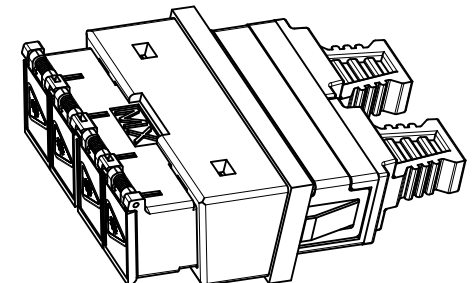
FABRIC OVER FOAM

106123-0530

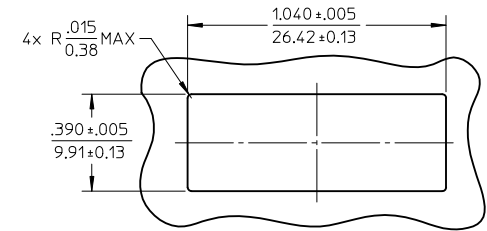
SOLID

COMPRESSED
EMI GASKET .049
1.24

ISO VIEW 1



ISO VIEW 2

RECOMMENDED
MOUNTING PATTERN

NOTES:

1. ALL DIMENSIONS ARE FOR REFERENCE.
2. TWO DUST CAPS SHOWN IN ISOMETRIC VIEW ONLY.
3. LC EMI QUAD ADAPTER HAS SC DUPLEX ADAPTER FOOTPRINT.

ENTER DESCRIPTION	2010/02/05	2010/02/11
EC NO: MF2010-0345	DRW:KPEVZNER	CHKD: IGUMIN
APPR: IGUMIN		
REV	DESCRIPTION	DATE
C		

QUALITY SYMBOLS	▽=0	▽=0
-----------------	-----	-----

GENERAL TOLERANCES (UNLESS SPECIFIED)	mm	INCH
4 PLACES	±---	±---
3 PLACES	±---	±---
2 PLACES	±---	±---
1 PLACE	±---	±---
ANGULAR	±---	°
DRAFT WHERE APPLICABLE MUST REMAIN WITHIN DIMENSIONS		

DIMENSION STYLE	IN/MM
DRAWN BY	DATE
PGIBLIN	2005/11/21
CHECKED BY	DATE
APPROVED BY	DATE
IGUMIN	2010/02/09
MATERIAL NO.	
SEE TABLE	

SCALE	2:1
DESIGN UNITS	INCH
THIRD ANGLE PROJECTION	
TITLE	LC EMI QUAD ADAPTER SNAP MOUNT
MOLEX	MOLEX INCORPORATED
DOCUMENT NO.	SD-106123-0500
SHEET NO.	1 OF 1

THIS DRAWING CONTAINS INFORMATION THAT IS PROPRIETARY TO MOLEX INCORPORATED AND SHOULD NOT BE USED WITHOUT WRITTEN PERMISSION	
-------------------------------------------------------------------------------------------------------------------------------	--

9

8

7

6

5

4

3

2

1