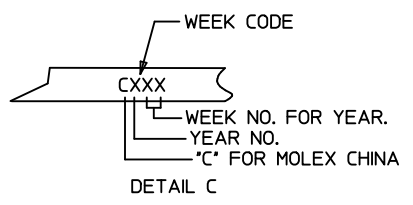
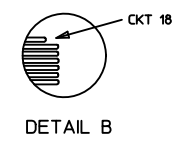
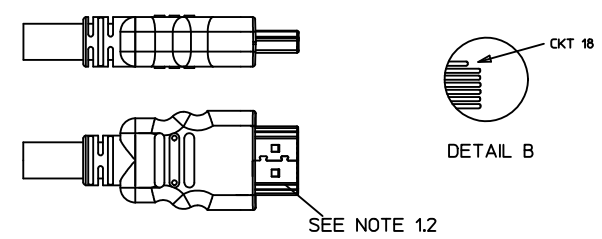
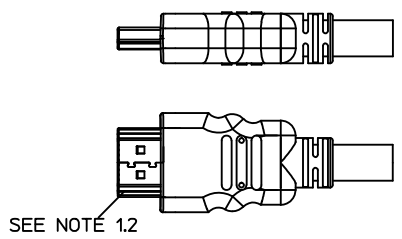
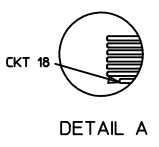
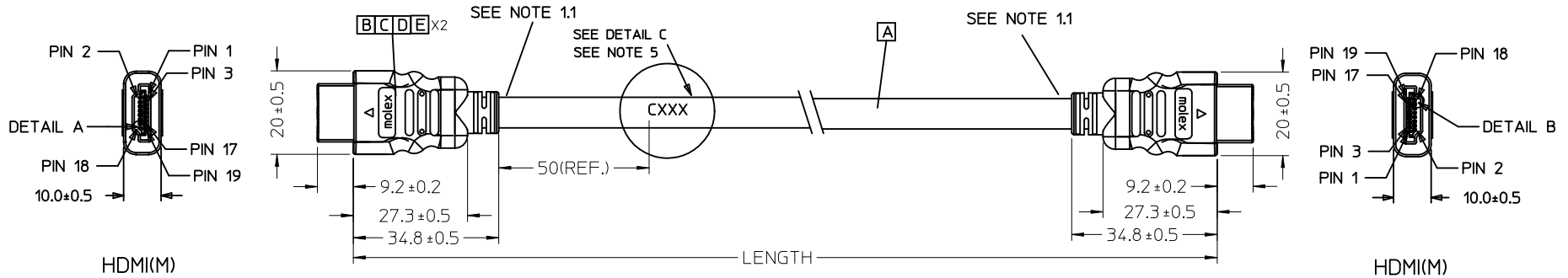


7 6 5 4 3 2 1



| | | | | | |
|---------------|-----------------------------|---------------|--------------------|----------------------|------------------|
| 887689830 | HDMI TO HDMI CABLE ASS'Y,5M | 5000 ± 100 | BLACK | 7.3MM(TMDS - AWG#28) | 172005984 |
| 887689820 | HDMI TO HDMI CABLE ASS'Y,3M | 3000 ± 80 | BLACK | 7.3MM(TMDS - AWG#28) | 172005984 |
| 887689810 | HDMI TO HDMI CABLE ASS'Y,2M | 2000 ± 60 | BLACK | 7.3MM(TMDS - AWG#28) | 172005984 |
| 887689800 | HDMI TO HDMI CABLE ASS'Y,1M | 1000 ± 30 | BLACK | 7.3MM(TMDS - AWG#28) | 172005984 |
| MX P/N | DESCRIPTION | LENGTH | CABLE COLOR | CABLE OD | CABLE P/N |

| | | | | | | | | | | | |
|--|--|--------------------|---|--|---|--------------|-------------------------------|---|--|--|--|
| ENTER DESCRIPTION EC NO: DG2011-0439 DRWN: FZHANG01 CHKD: JLU13 APPR: ZXDENG G | 2011/05/04 2011/05/04 2011/05/11 | DESCRIPTION REV | QUALITY SYMBOLS ▽=0 ◻=0 | GENERAL TOLERANCES (UNLESS SPECIFIED) mm INCH 4 PLACES ± --- ± --- 3 PLACES ± --- ± --- 2 PLACES ± --- ± --- 1 PLACE ± --- ± --- ANGULAR ± ---° | DIMENSION STYLE MM ONLY DRAWN BY: FZHANG01 DATE: 2011/05/04 CHECKED BY: LPNING DATE: 2011/05/04 APPROVED BY: ZXDENG DATE: 2011/05/11 | SCALE --- | DESIGN UNITS METRIC | THIRD ANGLE PROJECTION | | | |
| | | | DRAFT WHERE APPLICABLE MUST REMAIN WITHIN DIMENSIONS | | | | MATERIAL NO. SEE TABLE | TITLE HDMI(M) TO HDMI(M) CABLE ASS'Y | | | |
| | | | MOLEX INCORPORATED | | | | DOCUMENT NO. SD-88768-9800 | SHEET NO. 1 OF 2 | | | |
| | | | THIS DRAWING CONTAINS INFORMATION THAT IS PROPRIETARY TO MOLEX INCORPORATED AND SHOULD NOT BE USED WITHOUT WRITTEN PERMISSION | | | | | | | | |
| | | | SIZE A 4 | | | | | | | | |

6 5 4 3 2 1

NOTE:

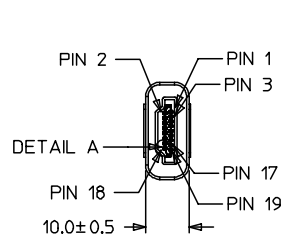
1. OVERMOLD SPECIFICATION:
 - 1.1 HDMI OUTER MOLDED WITH PVC RESIN
HDMI INNER MOLDED WITH PVC RESIN
 - 1.2 DUST COVER MOLDED WITH PE
2. PRODUCT ELECTRICAL SPECIFICATION REFER TO HDMI SPEC.
3. THE CODE PLEASE BE PRINTED ON THE SPACE
4. THIS PRODUCT MUST MEET EU CHEMICAL SUBSTANCE SPECIFICATION FOR PRODUCTS. (EU 2002/95/EC)

WIRE DIAGRAM:

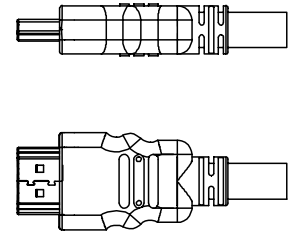
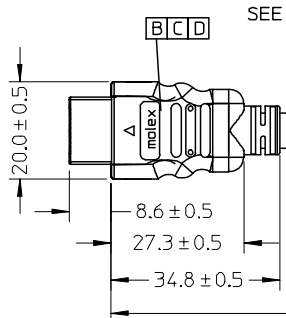
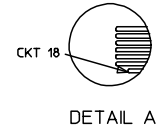
| SHIELD | SHIELD | OVERALL SHIELD | GROUND |
|--------|--------|----------------|--------------------|
| PIN 19 | PIN 19 | PINK | HOT PLUG DETECT |
| PIN 18 | PIN 18 | ORANGE | +5V POWER |
| PIN 17 | PIN 17 | YELLOW | DDC/CEC GROUND |
| PIN 16 | PIN 16 | WHITE | SDA |
| PIN 15 | PIN 15 | RED | SCL |
| PIN 14 | PIN 14 | VIOLET | RESERVED |
| PIN 13 | PIN 13 | GRAY | CEC |
| PIN 12 | PIN 12 | WHITE | TMDS CLOCK- |
| PIN 11 | PIN 11 | BRAID | TMDS CLOCK SHIELD |
| PIN 10 | PIN 10 | BLACK | TMDS CLOCK+ |
| PIN 9 | PIN 9 | WHITE | TMDS DATA 0- |
| PIN 8 | PIN 8 | BRAID | TMDS DATA 0 SHIELD |
| PIN 7 | PIN 7 | BLUE | TMDS DATA 0+ |
| PIN 6 | PIN 6 | WHITE | TMDS DATA 1- |
| PIN 5 | PIN 5 | BRAID | TMDS DATA 1 SHIELD |
| PIN 4 | PIN 4 | GREEN | TMDS DATA 1+ |
| PIN 3 | PIN 3 | WHITE | TMDS DATA 2- |
| PIN 2 | PIN 2 | BRAID | TMDS DATA 2 SHIELD |
| PIN 1 | PIN 1 | RED | TMDS DATA 2+ |
| HDMI | HDMI | COLOR | CABLE FUNCTION |

| | | | |
|------|--|---|------|
| E | PRE-CUT C.Foil 47X23mm T=25U | 2 | |
| D | COPPER FOIL | 2 | |
| C | HDMI 19P MALE,30U"Au Solder Type | 2 | |
| B | Metal Shell For HDMI 19P Male | 2 | |
| A | (4P+1P)X28+5CX28,ALSH,PVC,BK,7.3,UL20276 (SEE TABLE) | 1 | |
| ITEM | DESCRIPTION | L | QTY. |

| | | | | | | | | | | | |
|---|---|--|---------------------------------------|-------------------|-----------------|---|---------------|--------------------------------|------------------------|-------|--|
| ENTER DESCRIPTION EC NO: DG2011-0439 DRWN:FZHANG01 CHKD:JLU13 APPR:ZXDENG | DESCRIPTION 2011/05/04 2011/05/04 2011/05/11 | QUALITY SYMBOLS ▽=0 ◻=0 | GENERAL TOLERANCES (UNLESS SPECIFIED) | | DIMENSION STYLE | | SCALE | DESIGN UNITS | THIRD ANGLE PROJECTION | | |
| | | | | | MM ONLY | | --- | METRIC | | | |
| | | | | | mm | INCH | DRAWN BY DATE | | | TITLE | |
| | | | 4 PLACES | ± --- | ± --- | FZHANG01 2011/05/04 | | HDMI(M) TO HDMI(M) CABLE ASS'Y | | | |
| | | | 3 PLACES | ± --- | ± --- | CHECKED BY DATE | | | | | |
| 2 PLACES | ± --- | ± --- | LPNING 2011/05/04 | | | | | | | | |
| 1 PLACE | ± --- | ± --- | APPROVED BY DATE | | | | | | | | |
| | | ANGULAR ± ---° | | ZXDENG 2011/05/11 | | MOLEX INCORPORATED | | | | | |
| | | DRAFT WHERE APPLICABLE MUST REMAIN WITHIN DIMENSIONS | | MATERIAL NO. | | DOCUMENT NO. | | SHEET NO. | | | |
| | | | | SEE TABLE | | SD-88768-9800 | | 2 OF 2 | | | |
| | | | | SIZE | | THIS DRAWING CONTAINS INFORMATION THAT IS PROPRIETARY TO MOLEX INCORPORATED AND SHOULD NOT BE USED WITHOUT WRITTEN PERMISSION | | | | | |



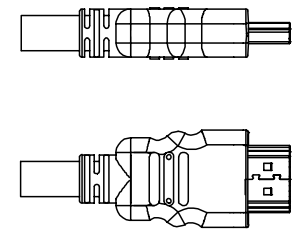
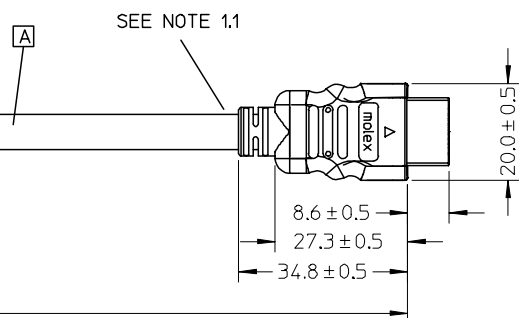
HDMI(M)



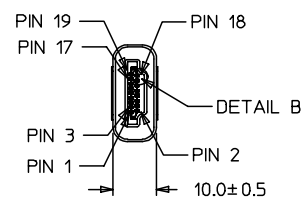
BACK SIDE

SEE NOTE 1.1

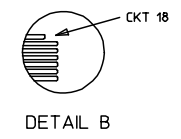
LENGTH



BACK SIDE



HDMI(M)



| 88768-9830 | HDMI TO HDMI CABLE ASS'Y,5M | 5000 ± 100 | BLACK | 7.3MM(TMDS - AWG#28) | 887808610 |
|------------|-----------------------------|------------|-------------|----------------------|-----------|
| 88768-9820 | HDMI TO HDMI CABLE ASS'Y,3M | 3000 ± 80 | BLACK | 7.3MM(TMDS - AWG#28) | 887808610 |
| 88768-9810 | HDMI TO HDMI CABLE ASS'Y,2M | 2000 ± 60 | BLACK | 7.3MM(TMDS - AWG#28) | 887808610 |
| 88768-9800 | HDMI TO HDMI CABLE ASS'Y,1M | 1000 ± 30 | BLACK | 7.3MM(TMDS - AWG#28) | 887808610 |
| MX P/N | DESCRIPTION | LENGTH | CABLE COLOR | CABLE OD | CABLE P/N |

| ENTER DESCRIPTION | 2005/12/27 |
|--------------------|-------------|
| EC NO: DG2006-0144 | 2005/12/30 |
| DRWN: JFZHENG | 2006/01/16 |
| CHKD: | |
| APPR: DQLUO | |
| REV | DESCRIPTION |

| | |
|-----------------|-----|
| QUALITY SYMBOLS | ▽=0 |
| | ∇=0 |

| GENERAL TOLERANCES (UNLESS SPECIFIED) | |
|--|-------------|
| | mm INCH |
| 4 PLACES | ± --- ± --- |
| 3 PLACES | ± --- ± --- |
| 2 PLACES | ± --- ± --- |
| 1 PLACE | ± --- ± --- |
| ANGULAR ± --- ° | |
| DRAFT WHERE APPLICABLE MUST REMAIN WITHIN DIMENSIONS | |

| DIMENSION STYLE | |
|-----------------|--------------|
| MM ONLY | |
| DRAWN BY | DATE |
| JFZHENG | 2005/12/26 |
| CHECKED BY | DATE |
| JFZHENG | 2005/12/26 |
| APPROVED BY | DATE |
| DQLUO | 2005/12/26 |
| MATERIAL NO. | DOCUMENT NO. |
| ENTER PART | SD-887689800 |
| SIZE | |
| A 4 | |

| | |
|---|--------------------------------|
| TITLE | AWG28 HDMI TO HDMI CABLE ASS'Y |
| MOLEX MOLEX INCORPORATED | |
| SHEET NO. | 1 OF 00 |
| THIS DRAWING CONTAINS INFORMATION THAT IS PROPRIETARY TO MOLEX INCORPORATED AND SHOULD NOT BE USED WITHOUT WRITTEN PERMISSION | |

NOTE:

1. OVMOLD SPECIFICATION:
 - 1.1 HDMI INNERMOLD WITH BK PVC 887800019.
 - 1.2 HDMI OVERMOLD WITH PVC 887800150.
2. MECHANICAL SPECIFICATION:

CABLE SHOULD STAND THE PULL FORCE 89-111N FOR 30 SECONDS WITH NO VISIBLE TERMINATION DAMAGE.
3. PRODUCT ELECTRICAL SPECIFICATION:
 - 3.1 DIELECTRIC STRENGTH.
 - 3.2 INSULATION RESISTANCE
 - 3.3 CONDUCTIVE RESISTANCE.
 - 3.4 TMDS Signals Time Domain Impedence
 - 3.5 TMDS Signals Time Domain Crosstalk:FEXT
 - 3.6 TMDS Signals Skew
 - 3.7 Attenuation(

REFER TO ES-002 ELECTRICAL SPECIFICATION FOR DETAILS.
- 4.CABLE CONSTRUCTION

(AWG#28*1P+D)*4 + AWG#28*1P + AWG#28*5C, 7.3MMOD
5. THIS PRODUCT MUST MEET ROHS COMPLIANCE.

WIRE DIAGRAM:

| SHIELD | SHIELD | OVERALL SHIELD | GROUND |
|--------|--------|----------------|--------------------|
| PIN 19 | PIN 19 | PINK | HOT PLUG DETECT |
| PIN 18 | PIN 18 | ORANGE | +5V POWER |
| PIN 17 | PIN 17 | YELLOW | DDC/CEC GROUND |
| PIN 16 | PIN 16 | WHITE | SDA |
| PIN 15 | PIN 15 | RED | SCL |
| PIN 14 | PIN 14 | VIOLET | RESERVED |
| PIN 13 | PIN 13 | GRAY | CEC |
| PIN 12 | PIN 12 | WHITE | TMDS CLOCK- |
| PIN 11 | PIN 11 | BRAID | TMDS CLOCK SHIELD |
| PIN 10 | PIN 10 | WHITE/BLACK | TMDS CLOCK+ |
| PIN 9 | PIN 9 | WHITE | TMDS DATA 0- |
| PIN 8 | PIN 8 | BRAID | TMDS DATA 0 SHIELD |
| PIN 7 | PIN 7 | WHITE/BLUE | TMDS DATA 0+ |
| PIN 6 | PIN 6 | WHITE | TMDS DATA 1- |
| PIN 5 | PIN 5 | BRAID | TMDS DATA 1 SHIELD |
| PIN 4 | PIN 4 | WHITE/GREEN | TMDS DATA 1+ |
| PIN 3 | PIN 3 | WHITE | TMDS DATA 2- |
| PIN 2 | PIN 2 | BRAID | TMDS DATA 2 SHIELD |
| PIN 1 | PIN 1 | WHITE/RED | TMDS DATA 2+ |
| HDMI | HDMI | COLOR | CABLE FUNCTION |

| D | SMALL METAL PLATE 47152-6009 | | 2 |
|------|------------------------------------|---|------|
| C | HDMI METAL CAN 47152-4001 | | 2 |
| B | HDMI HOUSING ASSY' 47152-1100 | | 2 |
| A | HDMI SINGLE LINK CABLE (SEE TABLE) | | 1 |
| ITEM | DESCRIPTION | L | QTY. |

| | | | | | | | | | |
|--|-----------------------------|---------------------------------------|--|----------------------------|---|--------------------|---|------------------------|--|
| ENTER DESCRIPTION EC NO: DG2006-0144 TDRWN: JFZHENG 2005/12/27 CHKD: 2005/12/30 APPR: DQLUO 2006/01/16 | QUALITY SYMBOLS =0 =0 | GENERAL TOLERANCES (UNLESS SPECIFIED) | | DIMENSION STYLE MM ONLY | | SCALE --- | DESIGN UNITS METRIC | THIRD ANGLE PROJECTION | |
| | | | mm | INCH | DRAWN BY JFZHENG | DATE 2005/12/26 | TITLE AWG28 HDMI TO HDMI CABLE ASS'Y | | |
| | | 4 PLACES | ±--- | ±--- | CHECKED BY JFZHENG | DATE 2005/12/26 | MATERIAL NO. ENTER PART | | |
| | | 3 PLACES | ±--- | ±--- | APPROVED BY DQLUO | DATE 2005/12/26 | DOCUMENT NO. SD-887689800 | SHEET NO. 2 OF 00 | |
| 2 PLACES | ±--- | ±--- | ANGULAR ±---° | | THIS DRAWING CONTAINS INFORMATION THAT IS PROPRIETARY TO MOLEX INCORPORATED AND SHOULD NOT BE USED WITHOUT WRITTEN PERMISSION | | | | |
| 1 PLACE | ±--- | ±--- | DRAFT WHERE APPLICABLE MUST REMAIN WITHIN DIMENSIONS | | | | | | |