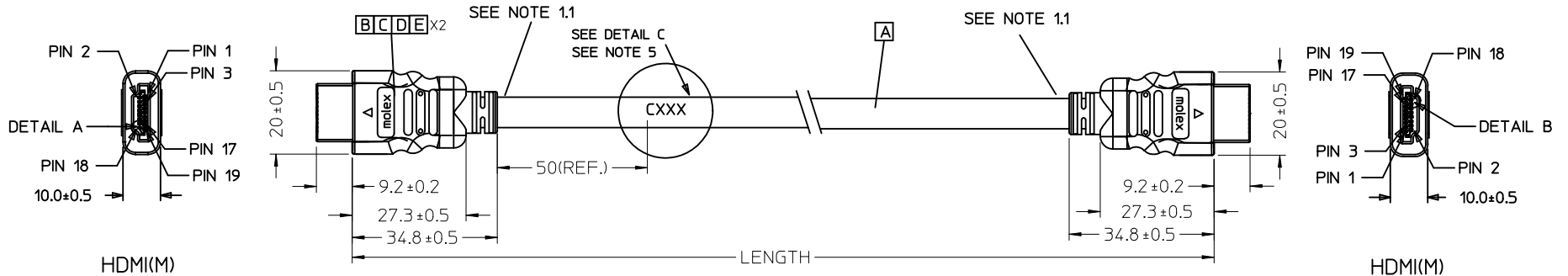
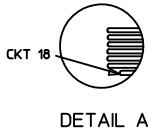


7 6 5 4 3 2 1

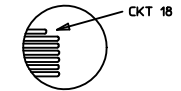


HDMI(M)

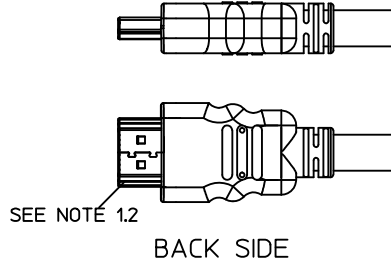
HDMI(M)



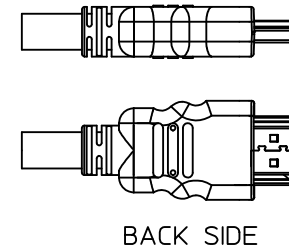
DETAIL A



DETAIL B



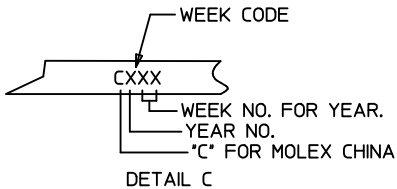
BACK SIDE



BACK SIDE

SEE NOTE 1.2

SEE NOTE 1.2



DETAIL C

|           |                             |            |             |                      |           |
|-----------|-----------------------------|------------|-------------|----------------------|-----------|
| 887689830 | HDMI TO HDMI CABLE ASS'Y,5M | 5000 ± 100 | BLACK       | 7.3MM(TMDS - AWG#28) | 172005984 |
| 887689820 | HDMI TO HDMI CABLE ASS'Y,3M | 3000 ± 80  | BLACK       | 7.3MM(TMDS - AWG#28) | 172005984 |
| 887689810 | HDMI TO HDMI CABLE ASS'Y,2M | 2000 ± 60  | BLACK       | 7.3MM(TMDS - AWG#28) | 172005984 |
| 887689800 | HDMI TO HDMI CABLE ASS'Y,1M | 1000 ± 30  | BLACK       | 7.3MM(TMDS - AWG#28) | 172005984 |
| MX P/N    | DESCRIPTION                 | LENGTH     | CABLE COLOR | CABLE OD             | CABLE P/N |

|                                                                                                                               |                                        |                               |                                       |            |                            |            |                               |                                   |                        |
|-------------------------------------------------------------------------------------------------------------------------------|----------------------------------------|-------------------------------|---------------------------------------|------------|----------------------------|------------|-------------------------------|-----------------------------------|------------------------|
| <b>ENTER DESCRIPTION</b><br>EC NO: DG2011-0439<br>DRWN:FZHANG01<br>CHKD:JLU13<br>APPR:ZXDENG                                  | 2011/05/04<br>2011/05/04<br>2011/05/11 | QUALITY SYMBOLS<br>▽=0<br>◻=0 | GENERAL TOLERANCES (UNLESS SPECIFIED) |            | DIMENSION STYLE<br>MM ONLY |            | SCALE<br>---                  | DESIGN UNITS<br>METRIC            | THIRD ANGLE PROJECTION |
|                                                                                                                               |                                        |                               |                                       | mm         | INCH                       | DRAWN BY   | DATE                          | TITLE                             |                        |
|                                                                                                                               |                                        |                               | 4 PLACES                              | ± ---      | ± ---                      | FZHANG01   | 2011/05/04                    | HDMI(M) TO HDMI(M)<br>CABLE ASS'Y |                        |
|                                                                                                                               |                                        |                               | 3 PLACES                              | ± ---      | ± ---                      | CHECKED BY | DATE                          |                                   |                        |
| 2 PLACES                                                                                                                      | ± ---                                  | ± ---                         | LPNING                                | 2011/05/04 |                            |            |                               |                                   |                        |
| 1 PLACE                                                                                                                       | ± ---                                  | ± ---                         | APPROVED BY                           | DATE       |                            |            |                               |                                   |                        |
| DRAFT WHERE APPLICABLE MUST REMAIN WITHIN DIMENSIONS                                                                          |                                        |                               | ANGULAR ± ---°                        |            | MATERIAL NO.<br>SEE TABLE  |            | DOCUMENT NO.<br>SD-88768-9820 |                                   | SHEET NO.<br>1 OF 2    |
| THIS DRAWING CONTAINS INFORMATION THAT IS PROPRIETARY TO MOLEX INCORPORATED AND SHOULD NOT BE USED WITHOUT WRITTEN PERMISSION |                                        |                               |                                       |            |                            |            |                               |                                   |                        |

6 5 4 3 2 1

7

6

5

4

3

2

1

## NOTE:

## 1. OVERMOLD SPECIFICATION:

1.1 HDMI OUTER MOLDED WITH PVC RESIN

HDMI INNER MOLDED WITH PVC RESIN

1.2 DUST COVER MOLDED WITH PE

## 2. PRODUCT ELECTRICAL SPECIFICATION REFER TO HDMI SPEC.

## 3. THE CODE PLEASE BE PRINTED ON THE SPACE

## 4. THIS PRODUCT MUST MEET EU CHEMICAL SUBSTANCE

SPECIFICATION FOR PRODUCTS. (EU 2002/95/EC)

## WIRE DIAGRAM:

| SHIELD | SHIELD | OVERALL SHIELD | GROUND             |
|--------|--------|----------------|--------------------|
| PIN 19 | PIN 19 | PINK           | HOT PLUG DETECT    |
| PIN 18 | PIN 18 | ORANGE         | +5V POWER          |
| PIN 17 | PIN 17 | YELLOW         | DDC/CEC GROUND     |
| PIN 16 | PIN 16 | WHITE          | SDA                |
| PIN 15 | PIN 15 | RED            | SCL                |
| PIN 14 | PIN 14 | VIOLET         | RESERVED           |
| PIN 13 | PIN 13 | GRAY           | CEC                |
| PIN 12 | PIN 12 | WHITE          | TMDS CLOCK-        |
| PIN 11 | PIN 11 | BRAID          | TMDS CLOCK SHIELD  |
| PIN 10 | PIN 10 | BLACK          | TMDS CLOCK+        |
| PIN 9  | PIN 9  | WHITE          | TMDS DATA 0-       |
| PIN 8  | PIN 8  | BRAID          | TMDS DATA 0 SHIELD |
| PIN 7  | PIN 7  | BLUE           | TMDS DATA 0+       |
| PIN 6  | PIN 6  | WHITE          | TMDS DATA 1-       |
| PIN 5  | PIN 5  | BRAID          | TMDS DATA 1 SHIELD |
| PIN 4  | PIN 4  | GREEN          | TMDS DATA 1+       |
| PIN 3  | PIN 3  | WHITE          | TMDS DATA 2-       |
| PIN 2  | PIN 2  | BRAID          | TMDS DATA 2 SHIELD |
| PIN 1  | PIN 1  | RED            | TMDS DATA 2+       |
| HDMI   | HDMI   | COLOR          | CABLE FUNCTION     |

|      |                                                      |   |      |
|------|------------------------------------------------------|---|------|
| E    | PRE-CUT C.Foil 47X23mm T=25U 172003402               |   | 2    |
| D    | COPPER FOIL 172000915                                |   | 2    |
| C    | HDMI 19P MALE,30U"Au Solder Type 172004051           |   | 2    |
| B    | Metal Shell For HDMI 19P Male 172004052              |   | 2    |
| A    | (4P+1P)X28+5CX28,ALSH,PVC,BK,7,3,UL20276 (SEE TABLE) |   | 1    |
| ITEM | DESCRIPTION                                          | L | QTY. |

|                                                                                                                         |                               |                                       |                                                            |                                                                                                                               |                           |                    |                                            |                        |                     |  |
|-------------------------------------------------------------------------------------------------------------------------|-------------------------------|---------------------------------------|------------------------------------------------------------|-------------------------------------------------------------------------------------------------------------------------------|---------------------------|--------------------|--------------------------------------------|------------------------|---------------------|--|
| ENTER DESCRIPTION<br>EC NO: DG2011-0439<br>DRWN:FZHANG01 2011/05/04<br>CHKD:JLIU13 2011/05/04<br>APPR:ZXDENG 2011/05/11 | QUALITY SYMBOLS<br>▽=0<br>◻=0 | GENERAL TOLERANCES (UNLESS SPECIFIED) |                                                            | DIMENSION STYLE<br>MM ONLY                                                                                                    |                           | SCALE<br>---       | DESIGN UNITS<br>METRIC                     | THIRD ANGLE PROJECTION |                     |  |
|                                                                                                                         |                               |                                       | mm                                                         | INCH                                                                                                                          | DRAWN BY<br>FZHANG01      | DATE<br>2011/05/04 | TITLE<br>HDMI(M) TO HDMI(M)<br>CABLE ASS'Y |                        |                     |  |
|                                                                                                                         |                               | 4 PLACES                              | ±---                                                       | ±---                                                                                                                          | CHECKED BY<br>LPNING      | DATE<br>2011/05/04 |                                            |                        |                     |  |
|                                                                                                                         |                               | 3 PLACES                              | ±---                                                       | ±---                                                                                                                          | APPROVED BY<br>ZXDENG     | DATE<br>2011/05/11 |                                            |                        |                     |  |
|                                                                                                                         |                               | ANGULAR ±----                         | DRAFT WHERE APPLICABLE<br>MUST REMAIN<br>WITHIN DIMENSIONS |                                                                                                                               | MATERIAL NO.<br>SEE TABLE |                    | DOCUMENT NO.<br>SD-88768-9820              |                        | SHEET NO.<br>2 OF 2 |  |
| G                                                                                                                       | REV                           | SIZE<br>A4                            |                                                            | THIS DRAWING CONTAINS INFORMATION THAT IS PROPRIETARY TO MOLEX INCORPORATED AND SHOULD NOT BE USED WITHOUT WRITTEN PERMISSION |                           |                    |                                            |                        |                     |  |

6

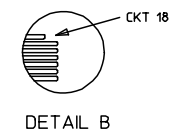
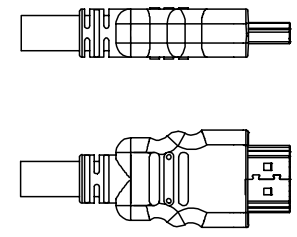
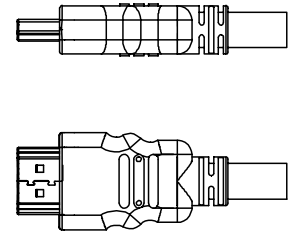
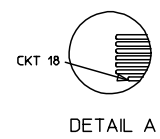
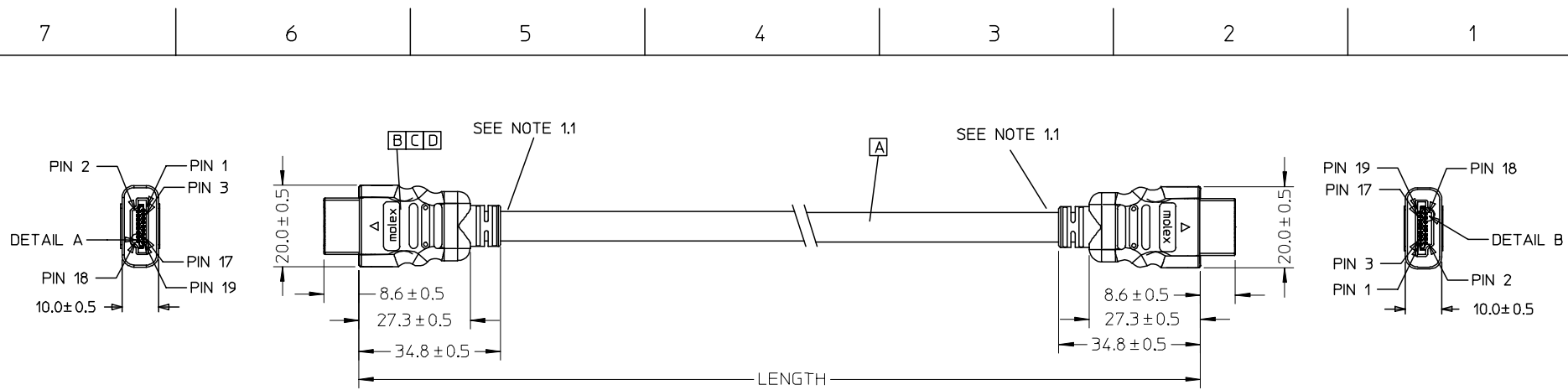
5

4

3

2

1



| 88768-9830 | HDMI TO HDMI CABLE ASS'Y,5M | 5000 ± 100 | BLACK       | 7.3MM(TMDS - AWG#28) | 887808610 |
|------------|-----------------------------|------------|-------------|----------------------|-----------|
| 88768-9820 | HDMI TO HDMI CABLE ASS'Y,3M | 3000 ± 80  | BLACK       | 7.3MM(TMDS - AWG#28) | 887808610 |
| 88768-9810 | HDMI TO HDMI CABLE ASS'Y,2M | 2000 ± 60  | BLACK       | 7.3MM(TMDS - AWG#28) | 887808610 |
| 88768-9800 | HDMI TO HDMI CABLE ASS'Y,1M | 1000 ± 30  | BLACK       | 7.3MM(TMDS - AWG#28) | 887808610 |
| MX P/N     | DESCRIPTION                 | LENGTH     | CABLE COLOR | CABLE OD             | CABLE P/N |

|                                                                                                                    |                     |                                       |       |                            |                                                      |                                                                                                                               |                                         |                        |  |  |
|--------------------------------------------------------------------------------------------------------------------|---------------------|---------------------------------------|-------|----------------------------|------------------------------------------------------|-------------------------------------------------------------------------------------------------------------------------------|-----------------------------------------|------------------------|--|--|
| ENTER DESCRIPTION<br>EC NO: DG2006-0144<br>TDRWN: JFZHENG 2005/12/27<br>CHKD: 2005/12/30<br>APPR: DQLUO 2006/01/16 | QUALITY SYMBOLS<br> | GENERAL TOLERANCES (UNLESS SPECIFIED) |       | DIMENSION STYLE<br>MM ONLY |                                                      | SCALE<br>---                                                                                                                  | DESIGN UNITS<br>METRIC                  | THIRD ANGLE PROJECTION |  |  |
|                                                                                                                    |                     |                                       | mm    | INCH                       | DRAWN BY<br>JFZHENG                                  | DATE<br>2005/12/26                                                                                                            | TITLE<br>AWG28 HDMI TO HDMI CABLE ASS'Y |                        |  |  |
|                                                                                                                    |                     | 4 PLACES                              | ± --- | ± ---                      | CHECKED BY<br>JFZHENG                                | DATE<br>2005/12/26                                                                                                            |                                         |                        |  |  |
|                                                                                                                    |                     | 3 PLACES                              | ± --- | ± ---                      | APPROVED BY<br>DQLUO                                 | DATE<br>2005/12/26                                                                                                            | MOLEX INCORPORATED                      |                        |  |  |
|                                                                                                                    |                     | 2 PLACES                              | ± --- | ± ---                      | DRAFT WHERE APPLICABLE MUST REMAIN WITHIN DIMENSIONS |                                                                                                                               |                                         |                        |  |  |
| 1 PLACE                                                                                                            | ± ---               | ± ---                                 |       |                            | SIZE<br>A 4                                          | THIS DRAWING CONTAINS INFORMATION THAT IS PROPRIETARY TO MOLEX INCORPORATED AND SHOULD NOT BE USED WITHOUT WRITTEN PERMISSION |                                         |                        |  |  |

NOTE:

1. OVMOLD SPECIFICATION:
  - 1.1 HDMI INNERMOLD WITH BK PVC 887800019.
  - 1.2 HDMI OVERMOLD WITH PVC 887800150.
2. MECHANICAL SPECIFICATION:
 

CABLE SHOULD STAND THE PULL FORCE 89-111N FOR 30 SECONDS WITH NO VISIBLE TERMINATION DAMAGE.

3. PRODUCT ELECTRICAL SPECIFICATION:
  - 3.1 DIELECTRIC STRENGTH.
  - 3.2 INSULATION RESISTANCE
  - 3.3 CONDUCTIVE RESISTANCE.
  - 3.4 TMDS Signals Time Domain Impedence
  - 3.5 TMDS Signals Time Domain Crosstalk:FEXT
  - 3.6 TMDS Signals Skew
  - 3.7 Attenuation(

REFER TO ES-002 ELECTRICAL SPECIFICATION FOR DETAILS.


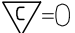
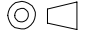

- 4.CABLE CONSTRUCTION
 

(AWG#28\*1P+D)\*4 + AWG#28\*1P + AWG#28\*5C, 7.3MMOD
5. THIS PRODUCT MUST MEET ROHS COMPLIANCE.

WIRE DIAGRAM:

| SHIELD | SHIELD | OVERALL SHIELD | GROUND             |
|--------|--------|----------------|--------------------|
| PIN 19 | PIN 19 | PINK           | HOT PLUG DETECT    |
| PIN 18 | PIN 18 | ORANGE         | +5V POWER          |
| PIN 17 | PIN 17 | YELLOW         | DDC/CEC GROUND     |
| PIN 16 | PIN 16 | WHITE          | SDA                |
| PIN 15 | PIN 15 | RED            | SCL                |
| PIN 14 | PIN 14 | VIOLET         | RESERVED           |
| PIN 13 | PIN 13 | GRAY           | CEC                |
| PIN 12 | PIN 12 | WHITE          | TMDS CLOCK-        |
| PIN 11 | PIN 11 | BRAID          | TMDS CLOCK SHIELD  |
| PIN 10 | PIN 10 | WHITE/BLACK    | TMDS CLOCK+        |
| PIN 9  | PIN 9  | WHITE          | TMDS DATA 0-       |
| PIN 8  | PIN 8  | BRAID          | TMDS DATA 0 SHIELD |
| PIN 7  | PIN 7  | WHITE/BLUE     | TMDS DATA 0+       |
| PIN 6  | PIN 6  | WHITE          | TMDS DATA 1-       |
| PIN 5  | PIN 5  | BRAID          | TMDS DATA 1 SHIELD |
| PIN 4  | PIN 4  | WHITE/GREEN    | TMDS DATA 1+       |
| PIN 3  | PIN 3  | WHITE          | TMDS DATA 2-       |
| PIN 2  | PIN 2  | BRAID          | TMDS DATA 2 SHIELD |
| PIN 1  | PIN 1  | WHITE/RED      | TMDS DATA 2+       |
| HDMI   | HDMI   | COLOR          | CABLE FUNCTION     |

|      |                                    |   |      |
|------|------------------------------------|---|------|
| D    | SMALL METAL PLATE 47152-6009       |   | 2    |
| C    | HDMI METAL CAN 47152-4001          |   | 2    |
| B    | HDMI HOUSING ASSY' 47152-1100      |   | 2    |
| A    | HDMI SINGLE LINK CABLE (SEE TABLE) |   | 1    |
| ITEM | DESCRIPTION                        | L | QTY. |

|                                                                                   |                                        |                                                                                                                                                                                                       |                                       |            |                                                                                                                               |              |              |                                                                                                                                                         |  |  |  |
|-----------------------------------------------------------------------------------|----------------------------------------|-------------------------------------------------------------------------------------------------------------------------------------------------------------------------------------------------------|---------------------------------------|------------|-------------------------------------------------------------------------------------------------------------------------------|--------------|--------------|---------------------------------------------------------------------------------------------------------------------------------------------------------|--|--|--|
| ENTER DESCRIPTION<br>EC NO: DG2006-0144<br>TDRWN: JFZHENG<br>CHKD:<br>APPR: DQLUO | 2005/12/27<br>2005/12/30<br>2006/01/16 | QUALITY SYMBOLS<br> = 0<br> = 0 | GENERAL TOLERANCES (UNLESS SPECIFIED) |            | DIMENSION STYLE                                                                                                               | SCALE        | DESIGN UNITS | THIRD ANGLE PROJECTION                                                                                                                                  |  |  |  |
|                                                                                   |                                        |                                                                                                                                                                                                       |                                       |            | MM ONLY                                                                                                                       | ---          | METRIC       |                                                                    |  |  |  |
|                                                                                   |                                        |                                                                                                                                                                                                       | 4 PLACES                              | ± ---      | ± ---                                                                                                                         | DRAWN BY     | DATE         | TITLE<br>AWG28 HDMI TO HDMI CABLE ASS'Y<br><br> MOLEX INCORPORATED |  |  |  |
|                                                                                   |                                        |                                                                                                                                                                                                       | 3 PLACES                              | ± ---      | ± ---                                                                                                                         | CHECKED BY   | DATE         |                                                                                                                                                         |  |  |  |
| 2 PLACES                                                                          | ± ---                                  | ± ---                                                                                                                                                                                                 | JFZHENG                               | 2005/12/26 |                                                                                                                               |              |              |                                                                                                                                                         |  |  |  |
| 1 PLACE                                                                           | ± ---                                  | ± ---                                                                                                                                                                                                 | APPROVED BY                           | DATE       |                                                                                                                               |              |              |                                                                                                                                                         |  |  |  |
|                                                                                   |                                        | ANGULAR ± ---°                                                                                                                                                                                        | DQLUO                                 | 2005/12/26 | MATERIAL NO.                                                                                                                  | DOCUMENT NO. | SHEET NO.    |                                                                                                                                                         |  |  |  |
| DRAFT WHERE APPLICABLE MUST REMAIN WITHIN DIMENSIONS                              |                                        |                                                                                                                                                                                                       | ENTER PART                            |            | SD-887689820                                                                                                                  | 2 OF 00      |              |                                                                                                                                                         |  |  |  |
|                                                                                   |                                        |                                                                                                                                                                                                       | SIZE                                  |            | THIS DRAWING CONTAINS INFORMATION THAT IS PROPRIETARY TO MOLEX INCORPORATED AND SHOULD NOT BE USED WITHOUT WRITTEN PERMISSION |              |              |                                                                                                                                                         |  |  |  |