

MATERIALS AND FINISHES

SMA CONNECTOR

BODY BRASS  
PLATED GOLD

CENTER CONTACT PHOSPHOR BRONZE  
PLATED GOLD

INSULATOR TEFLON

JAM NUT BRASS  
PLATED GOLD

LOCK WASHER SPCC  
PLATED GOLD

MCRF CONNECTOR

HOUSING PHOSPHOR BRONZE  
PLATED SEE TABLE

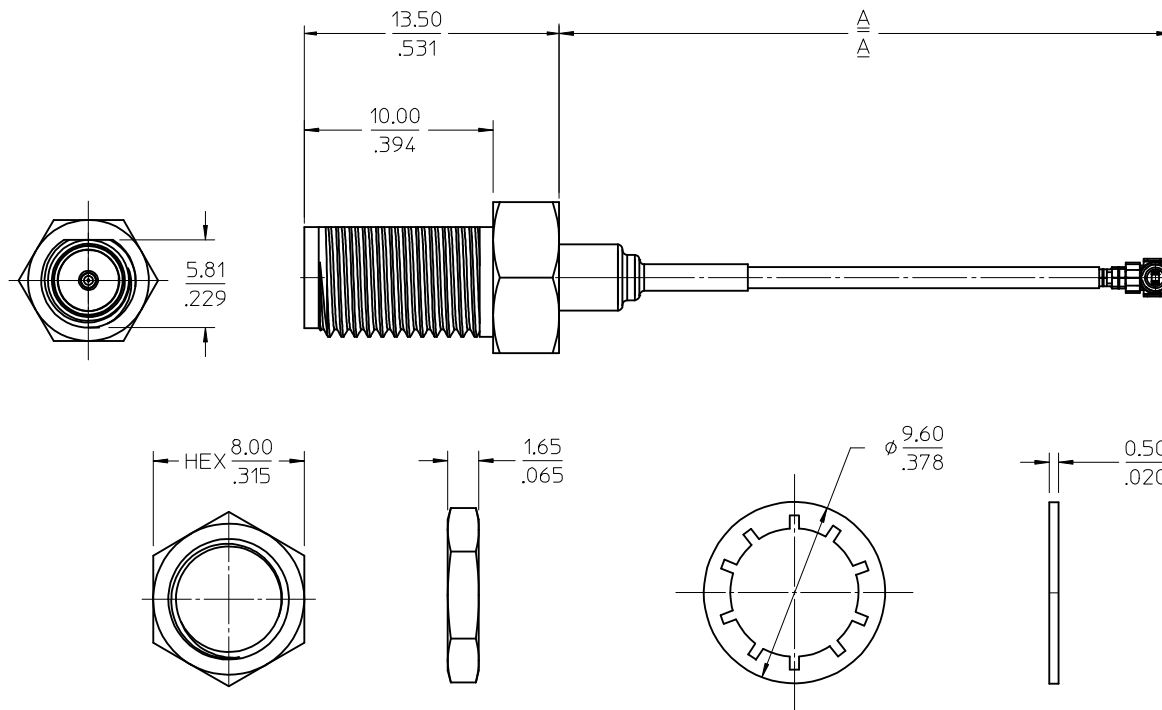
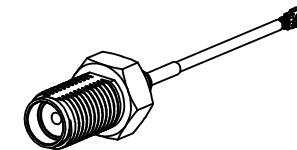
HOUSING PBT

CENTER CONTACT PHOSPHOR BRONZE  
PLATED GOLD

CABLE

1.13 CABLE OR EQUIVALENT  
COLOR GRAY

SHRINK TUBE  
VERSAFIT V2



89761-3417	GOLD	7.087±.197	180.00±5.00	POLY BAG
89761-3416	GOLD	6.693±.197	170.00±5.00	POLY BAG
89761-3415	GOLD	3.000±.197	76.20±5.00	POLY BAG
89761-3414	GOLD	5.905±.197	150.00±5.00	POLY BAG
89761-3413	GOLD	11.811±.197	300.00±5.00	POLY BAG
89761-3412	GOLD	3.937±.197	100.00±5.00	POLY BAG
89761-3411	GOLD	7.874±.197	200.00±5.00	POLY BAG
<del>89761-3410</del>	<del>SILVER</del>	<del>3.937±.197</del>	<del>100.00±5.00</del>	<del>-----</del>

OBSELETE

PART NO.	UFL PLATING	IN	MM	PACKING
DIMENSION A				

MIL-STD-348A, FIG. 310.2	INTERFACE
SPECIFICATION	DESCRIPTION

CHG: ADDED PACKING DESCRIPTION EWR RF16-E018 EC NO: URF2016-0519 DRWN: YCHENG 2016/01/18 CHKD: APPR: YCHENG 2016/01/19 REV: A10	QUALITY SYMBOLS ▽=0 ▽=0	GENERAL TOLERANCES (UNLESS SPECIFIED)	DIMENSION STYLE MM/IN	SCALE	DESIGN UNITS METRIC	THIRD ANGLE PROJECTION	
		4 PLACES ± --- ± ---	DRAWN BY EVITA	DATE 2008/12/01	TITLE SMA JACK TO MCRF 1.13 CABLE CA-SMA/MCRF		
		3 PLACES ± --- ± ---	CHECKED BY JOANNE	DATE 2008/12/01	APPROVED BY MISEN		
		2 PLACES ± --- ± ---	APPROVED BY MISEN	DATE 2008/12/01	MATERIAL NO. SEE TABLE		
DRAFT WHERE APPLICABLE MUST REMAIN WITHIN DIMENSIONS		ANGULAR ± 2 °		DOCUMENT NO. SD-89761-341		SHEET NO. 1 OF 1	
THIS DRAWING CONTAINS INFORMATION THAT IS PROPRIETARY TO MOLEX INCORPORATED AND SHOULD NOT BE USED WITHOUT WRITTEN PERMISSION							