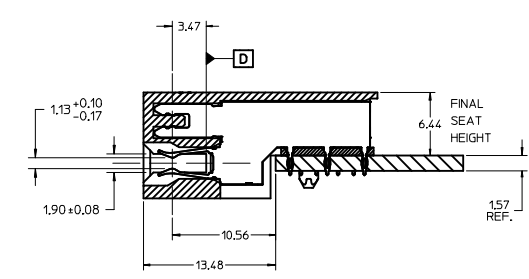
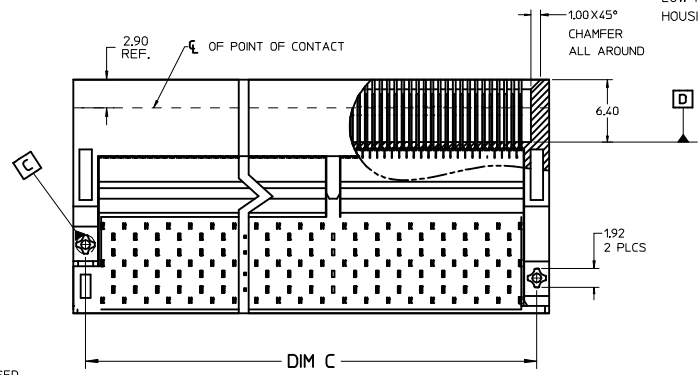
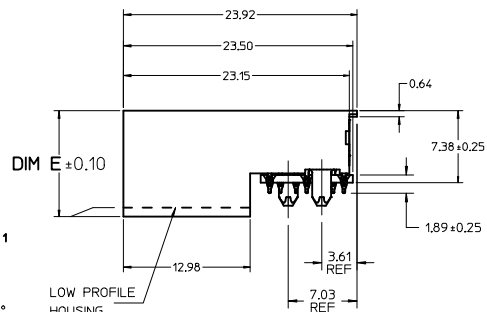
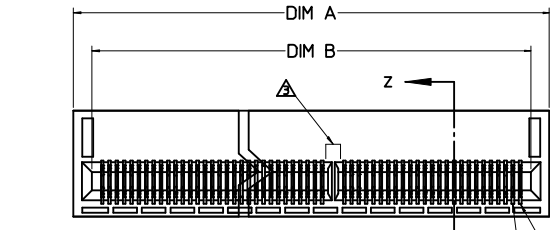
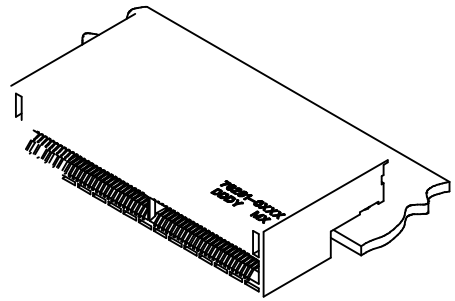


PART NUMBER		STATUS	CKTS	DIM A	DIM B	DIM C	DIM D	POWER POS.	DIM E
TIN	TIN FINISH/THICKNESS								
762910008	762910008	NOT TOOLED	8	8.19	4.40	5.65	4.25	-	10.84
762910014	762910014	NOT TOOLED	14	10.44	6.65	7.90	6.50	-	10.84
762910020	762910020	NOT TOOLED	20	12.69	8.90	10.15	8.75	-	10.84
762910026	762910026	NOT TOOLED	26	14.94	11.15	12.40	11.00	-	10.84
762910032	762910032	NOT TOOLED	32	17.19	13.40	14.65	13.25	-	10.84
762910038	762910038	NOT TOOLED	38	19.44	15.60	16.90	15.50	-	10.84
762910044	762910044	NOT TOOLED	44	21.69	17.90	19.15	17.75	-	10.84
762910050	762910050	NOT TOOLED	50	23.94	20.15	21.40	20.00	-	10.84
762910056	762910056	NOT TOOLED	56	26.19	22.40	23.65	22.25	-	10.84
762910062	762910062	NOT TOOLED	62	28.44	24.65	25.90	24.50	-	10.84
762910068	762910068	NOT TOOLED	68	30.69	26.90	28.15	26.75	-	10.84
762910074	762910074	NOT TOOLED	74	32.94	29.15	30.40	29.00	-	10.84
762910080	762910080	NOT TOOLED	80	35.19	31.40	32.65	31.25	-	10.84
762910086	762910086	NOT TOOLED	86	37.44	33.65	34.90	33.50	-	10.84
762910092	762910092	NOT TOOLED	92	39.69	35.90	37.15	35.75	-	10.84
762910098	762910098	NOT TOOLED	98	41.94	38.15	39.40	38.00	-	10.84
762910104	762910104	NOT TOOLED	104	44.19	40.40	41.65	40.25	-	10.84
762910110	762910110	NOT TOOLED	110	46.44	42.65	43.90	42.50	-	10.84
762910116	762910116	NOT TOOLED	116	48.69	44.90	46.15	44.75	-	10.84
762910122	762910122	NOT TOOLED	122	50.94	47.15	48.40	47.00	-	10.84
762910128	762910128	NOT TOOLED	128	53.19	49.40	50.65	49.25	-	10.84
762910134	762910134	NOT TOOLED	134	55.44	51.65	52.90	51.50	-	10.84
762910140	762910140	NOT TOOLED	140	57.69	53.90	55.15	53.75	-	10.84
762910146	762910146	NOT TOOLED	146	59.94	56.15	57.40	56.00	-	10.84
762910152	762910152	NOT TOOLED	152	62.19	58.40	59.65	58.25	-	10.84
762910158	762910158	NOT TOOLED	158	64.44	60.65	61.90	60.50	-	10.84
762910164	762910164	NOT TOOLED	164	66.69	62.90	64.15	62.75	-	10.84
762910170	762910170	NOT TOOLED	170	68.94	65.15	66.40	65.00	-	10.84
762910176	762910176	NOT TOOLED	176	71.19	67.40	68.65	67.25	-	10.84
762910182	762910182	NOT TOOLED	182	73.44	69.65	70.90	69.50	-	10.84
762910188	762910188	NOT TOOLED	188	75.69	71.90	73.15	71.75	-	10.84
762910194	762910194	NOT TOOLED	194	77.94	74.15	75.40	74.00	-	10.84
762910196	762910196	NOT TOOLED	196	80.19	76.40	77.65	76.25	-	10.84
762910202	762910202	NOT TOOLED	202	82.44	78.65	79.90	78.50	-	10.84
762910208	762910208	NOT TOOLED	208	84.69	80.90	82.15	80.75	-	10.84
762910214	762910214	NOT TOOLED	214	86.94	83.15	84.40	83.00	-	10.84
762910220	762910220	NOT TOOLED	220	89.19	85.40	86.65	85.25	-	10.84
762910226	762910226	NOT TOOLED	226	91.44	87.65	88.90	87.50	-	10.84
762910232	762910232	NOT TOOLED	232	93.69	89.90	91.15	89.75	-	10.84
762910238	762910238	NOT TOOLED	238	95.94	92.15	93.40	92.00	-	10.84
762910244	762910244	NOT TOOLED	244	98.19	94.40	95.65	94.25	-	10.84
762910250	762910250	NOT TOOLED	250	100.44	96.65	97.90	96.50	-	10.84



- NOTES:
- MATERIAL - CONNECTOR HOUSING - GLASS FILLED LCP, 94V-0, BLACK OVERMOLDING ON TERMINALS: GLASS FILLED LCP, 94V-0, BLACK TERMINALS: COPPER ALLOY, SPRING TEMPER
 - TERMINAL FINISH: CONTACT AREA: .75µm HARD GOLD OVER 3.8µm MIN NICKEL. COMPLIANT AREA: .75-1.50µm TIN OVER .75µm - 1.50µm NICKEL.
 - FOR CIRCUIT SIZES GREATER THAN 170, A CENTER ALIGNMENT KEY WILL BE USED.
 - REFER TO PS-76291-001 PRODUCT SPEC FOR ALL ELECTRICAL, MECHANICAL, AND ENVIRONMENTAL SPECIFICATIONS.
 - REFER TO PK-76291-001 FOR ALL PACKAGING SPECIFICATIONS.
 - REFER TO AS-76291-001 FOR BOARD APPLICATION INFORMATION.
 - MODULE BOARD CONTACT PAD PLATING TO BE .76µm MIN HARD GOLD OVER 2.54µm MIN NICKEL
 - MODULE BOARD CONTACT PAD SURFACE ROUGHNESS NOT TO EXCEED Ra 0.2µm.
 - PART TO BE LASER MARKED WITH PART NUMBER, WHERE XXX IS THE CIRCUIT SIZE OR POWER WAFER OPTION, MANUFACTURING FACILITY, AND DATE CODE IN THE FORMAT OF: DAY OF THE YEAR AND LAST DIGIT OF THE YEAR: DDDY

RevDIM E LowProfile EC NO: LCP2014-4718 DRWNSB061E CHKD: APPR:MBANKIS 2013/11/19 2014/05/12	QUALITY SYMBOLS ∇=0 ∇=0 ∇=0	GENERAL TOLERANCES (UNLESS SPECIFIED) mm INCH 4 PLACES +--- +--- 3 PLACES +--- +--- 2 PLACES +0.13 +--- 1 PLACE +0.25 +--- 0 PLACE +--- +--- ANGULAR ±1/2° DRAFT WHERE APPLICABLE MUST REMAIN WITHIN DIMENSIONS	DIMENSION STYLE MM ONLY SCALE 4:1 DESIGN UNITS METRIC THIRD ANGLE PROJECTION	DRAWN BY HAVERY DATE 2010/11/16 CHECKED BY DATE APPROVED BY MBANKIS DATE 2010/11/17	TITLE .75 COPLANAR CONNECTOR GENERAL SALES DRAWING moxlex DOCUMENT NO. SD-76291-001 SHEET NO. 1 OF 3
	THIS DRAWING CONTAINS INFORMATION THAT IS PROPRIETARY TO MOLEX INCORPORATED AND SHOULD NOT BE USED WITHOUT WRITTEN PERMISSION				