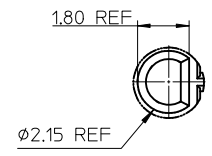
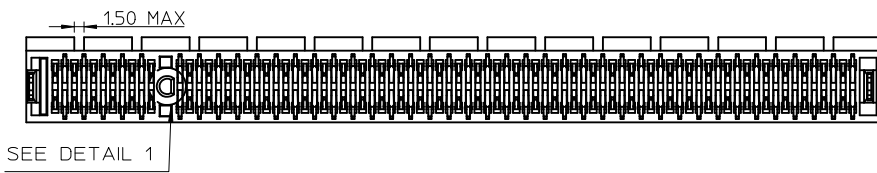
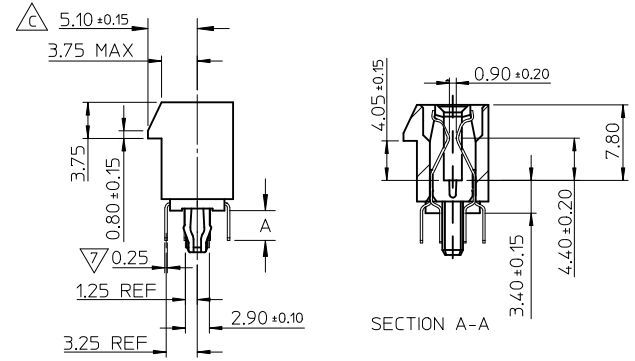
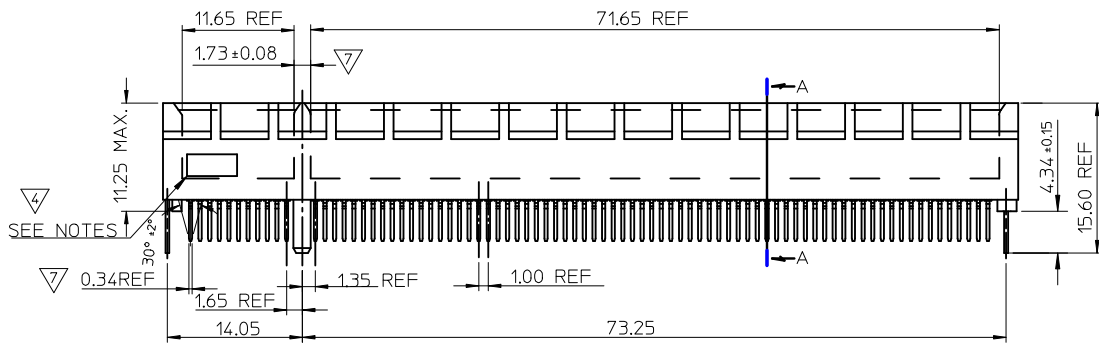
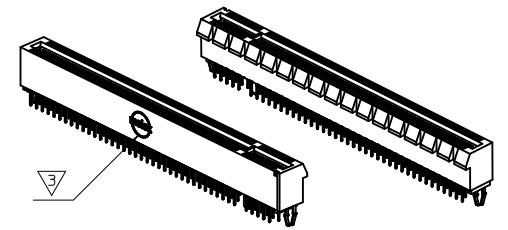
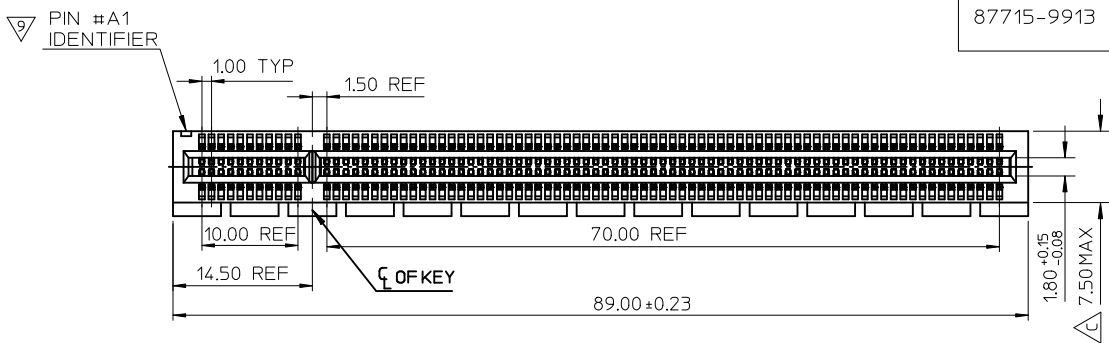
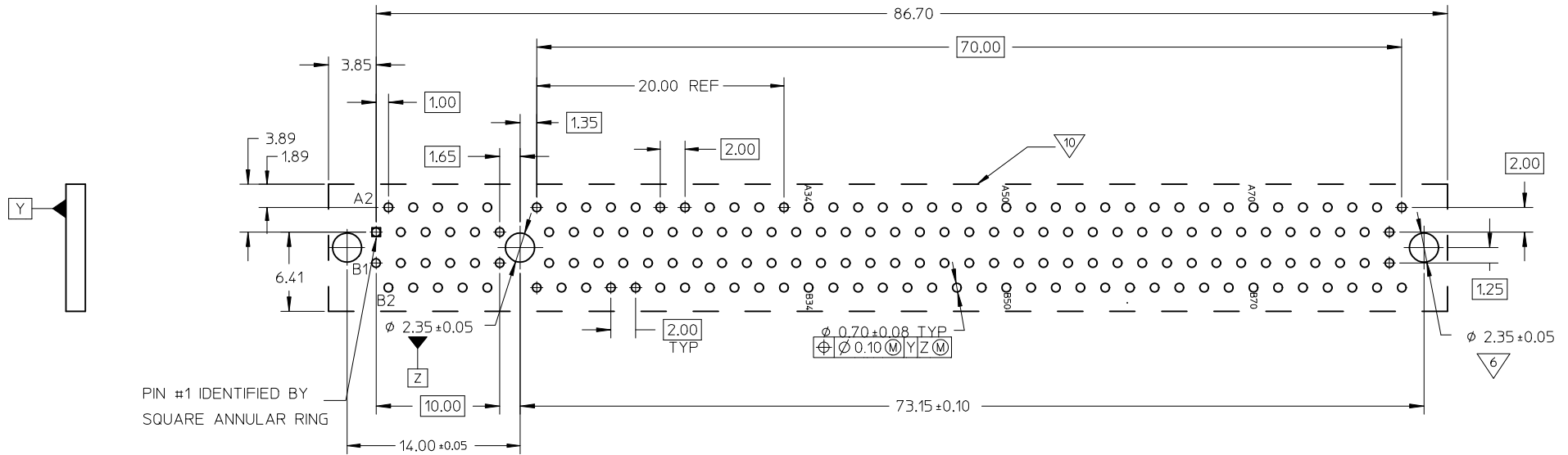


PART NUMBER	DIM A	CONTACT AREA PLATING OPTION	SOLDERTAIL PLATING OPTION	PROT SIZE	TOTAL CKTS SIZE
87715-9912	2.54	30 MICROINCH MIN. GOLD	100 MICROINCH MIN. TIN OVER NICKEL PLATED OVERALL	16	164
87715-9913	3.00	30 MICROINCH MIN. GOLD	100 MICROINCH MIN. TIN OVER NICKEL PLATED OVERALL	16	164



DETAIL 1

CORRECT ERROR TO INCLUDE DIM A* IN DRAWING EC NO: SH2012-0364 DRWNR: L109 2012/04/24 CHKD: APPR: RZHANG 2012/04/27	DESCRIPTION REV	QUALITY SYMBOLS ▽=0 ▽=0	GENERAL TOLERANCES (UNLESS SPECIFIED)		DIMENSION STYLE MM ONLY		SCALE METRIC	DESIGN UNITS METRIC		THIRD ANGLE PROJECTION																					
		<table border="1"> <thead> <tr> <th></th> <th>mm</th> <th>INCH</th> </tr> </thead> <tbody> <tr> <td>4 PLACES</td> <td>± ---</td> <td>± ---</td> </tr> <tr> <td>3 PLACES</td> <td>± ---</td> <td>± ---</td> </tr> <tr> <td>2 PLACES</td> <td>± 0.25</td> <td>± ---</td> </tr> <tr> <td>1 PLACE</td> <td>± 0.25</td> <td>± ---</td> </tr> <tr> <td>0 PLACE</td> <td>±</td> <td>±</td> </tr> </tbody> </table>			mm	INCH	4 PLACES	± ---	± ---	3 PLACES	± ---	± ---	2 PLACES	± 0.25	± ---	1 PLACE	± 0.25	± ---	0 PLACE	±	±	DRAWN BY KEN LEE		DATE 2006/03/22		TITLE PCI EXPRESS X16 (164CKT) VERT DIP WITH BOARD LOCK (LEAD FREE VERSION)					
			mm	INCH																											
		4 PLACES	± ---	± ---																											
3 PLACES	± ---	± ---																													
2 PLACES	± 0.25	± ---																													
1 PLACE	± 0.25	± ---																													
0 PLACE	±	±																													
DRAFT WHERE APPLICABLE MUST REMAIN WITHIN DIMENSIONS		ANGULAR ± 3 °		CHECKED BY ALLEN LIN		DATE 2006/03/22		MATERIAL NO. SEE TABLE																							
APPROVED BY WILSON CHANG		DATE 2006/03/22		DOCUMENT NO. SD-87715-211		SHEET NO. 1 OF 3		THIS DRAWING CONTAINS INFORMATION THAT IS PROPRIETARY TO MOLEX INCORPORATED AND SHOULD NOT BE USED WITHOUT WRITTEN PERMISSION																							



NOTES:

- MATERIALS: HOUSING - HIGH TEMPERATURE THERMOPLASTIC, UL 94-V0 (BLACK)
TERMINAL - COPPER ALLOY
- PLATING: CONTACT AREA - SEE TABLE IN SHEET 2 FOR PLATING OPTION
SOLDER TAILS - SEE TABLE IN SHEET 2 FOR PLATING OPTION
UNDERPLATING - 50μ" (1.27μm) MIN. NICKEL

- MOLEX LOGO - TO BE LASER-MARKED
- DATE CODE - TO BE LASER-MARKED
- CHAMFER EDGES OF EDGE CARD MUST BE FREE OF CUTTING BURRS
- THE HORIZONTAL AXIS FOR THE FOOTPRINT HOLE PATTERN IS ESTABLISHED BY A LINE THROUGH THE CENTRE OF THE TWO Ø2.35 HOLES. THE VERTICAL AXIS IS 90° TO THE HORIZONTAL AXIS, THROUGH THE CENTRE OF DATUM Z
- FEATURES DESIGNED TO FUNCTIONALLY MATE/MOUNT (SLIP FIT) PER THE RECOMMENDED EDGE CARD AND PCB PATTERN.
- PINS FOR HOT PLUG PRESENCE DETECTION, NO TIE BAR PERMITTED FROM CARD EDGE TO LEADING EDGE OF PAD FOR THE HOT PLUG PINS.
- PIN #1 IDENTIFIER
- KEEP OUT AREA - NO EXTERNAL COMPONENTS ALLOWED ON PCB SURFACE

RECOMMENDED P.C.B. PATTERN
(CONNECTOR SIDE)

THICKNESS: 1.57mm FOR 2.54mm SOLDER TAIL LENGTH
2.35mm FOR 3.00mm SOLDER TAIL LENGTH

- PRODUCT SPECIFICATION REFER TO PS-87715-200.
- PACKAGE SPECIFICATION REFER TO PK-87715-205.
- TEST SUMMARY REFER TO TS-87715-211.
- LEAD FREE AND RoHS COMPLIANT PRODUCT.

SEE SHEET 1 EC NO: SH2012-0364 DRW: RLL109 2012/04/24 CHKD: APPR: RZHANG 2012/04/27	QUALITY SYMBOLS	GENERAL TOLERANCES (UNLESS SPECIFIED)		DIMENSION STYLE MM ONLY		SCALE	DESIGN UNITS METRIC	THIRD ANGLE PROJECTION
	▽=0	mm	INCH	DRAWN BY	DATE	TITLE		
	▽=0	4 PLACES ± --- ± ---	3 PLACES ± --- ± ---	KEN LEE	2006/03/22	PCI EXPRESS X16 (164CKT) VERT DIP WITH BOARD LOCK (LEAD FREE VERSION)		
		2 PLACES ± 0.25 ± ---	1 PLACE ± 0.25 ± ---	CHECKED BY	DATE	molex DOCUMENT NO. SD-87715-211 SHEET NO. 2 OF 3		
	0 PLACE ± ±	ANGULAR ± 3°	ALLEN LIN	2006/03/22				
	DRAFT WHERE APPLICABLE MUST REMAIN WITHIN DIMENSIONS		APPROVED BY		DATE	MATERIAL NO.		
			WILSON CHANG		2006/03/22	SEE TABLE		
			MATERIAL NO.		THIS DRAWING CONTAINS INFORMATION THAT IS PROPRIETARY TO MOLEX INCORPORATED AND SHOULD NOT BE USED WITHOUT WRITTEN PERMISSION			

10 9 8 7 6 5 4 3 2 1

F

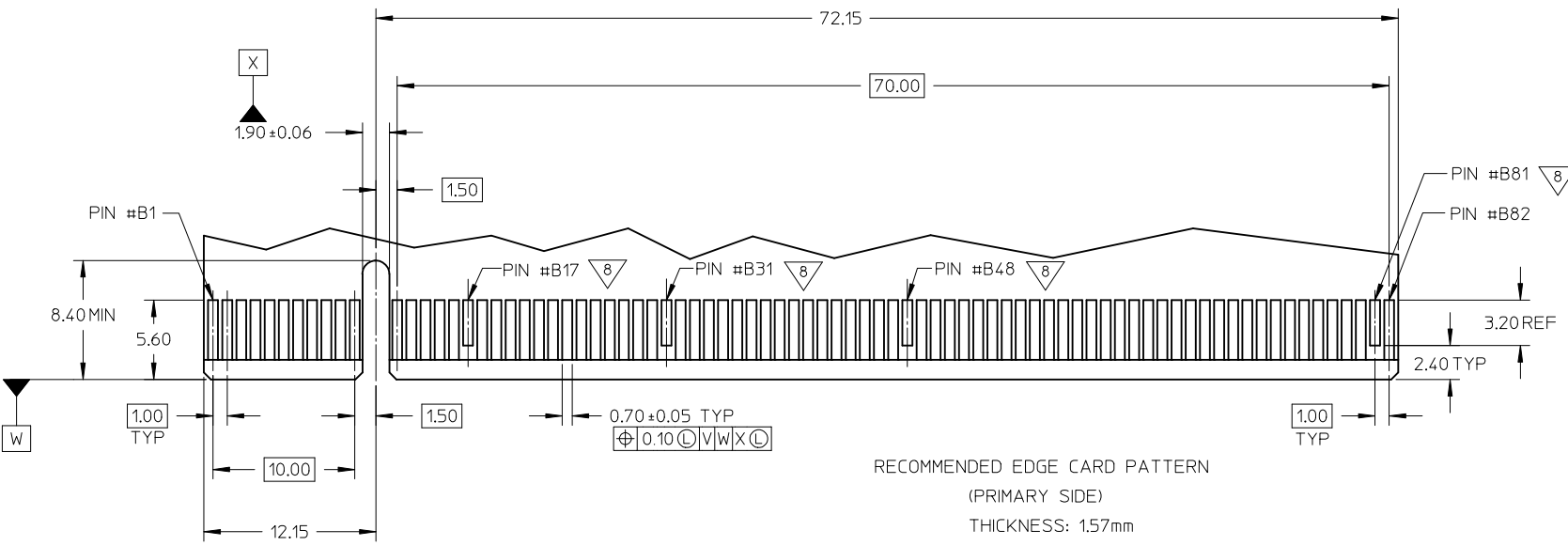
E

D

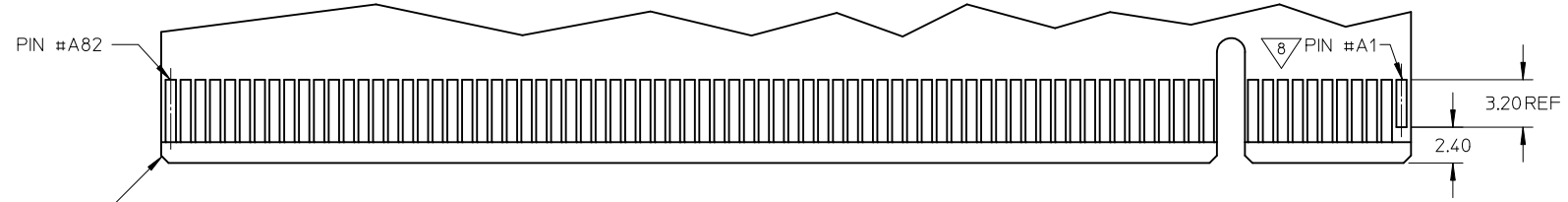
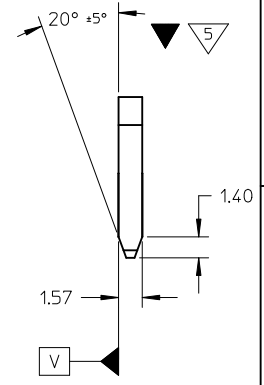
C

B

A



RECOMMENDED EDGE CARD PATTERN
(PRIMARY SIDE)
THICKNESS: 1.57mm



RECOMMENDED EDGE CARD PATTERN
(SECONDARY SIDE)
THICKNESS: 1.57mm

C0.50 x 45° (4X)

SEE SHEET 1	DRWNR: L109	2012/04/24
EC NO: SH2012-0364	CHKD:	APPR: RZHANG
REV	DESCRIPTION	DATE

QUALITY SYMBOLS	GENERAL TOLERANCES (UNLESS SPECIFIED)	
	mm	INCH
▽=0	4 PLACES ± ---	± ---
▽=0	3 PLACES ± ---	± ---
	2 PLACES ± 0.25	± ---
	1 PLACE ± 0.25	± ---
	0 PLACE ±	±
	ANGULAR ± 3°	
	DRAFT WHERE APPLICABLE MUST REMAIN WITHIN DIMENSIONS	

DIMENSION STYLE		SCALE	DESIGN UNITS
MM ONLY			METRIC
DRAWN BY	DATE	TITLE	
KEN LEE	2006/03/22	PCI EXPRESS X16 (164CKT) VERT DIP WITH BOARD LOCK (LEAD FREE VERSION)	
CHECKED BY	DATE	molex	
ALLEN LIN	2006/03/22		
APPROVED BY	DATE		
WILSON CHANG	2006/03/22	MATERIAL NO.	DOCUMENT NO.
		SEE TABLE	SD-87715-211

THIRD ANGLE PROJECTION	
SHEET NO.	3 OF 3

9 8 7 6 5 4 3 2 1