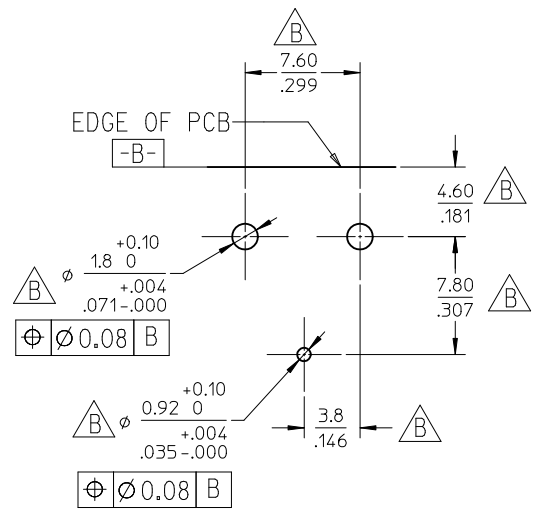


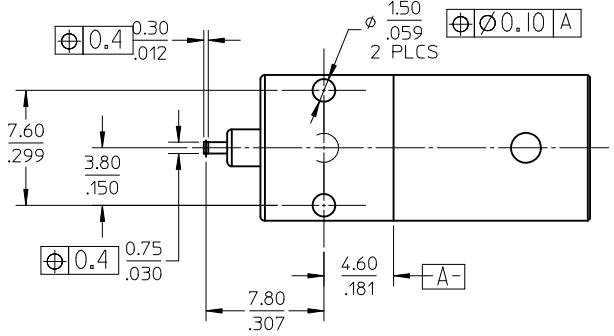
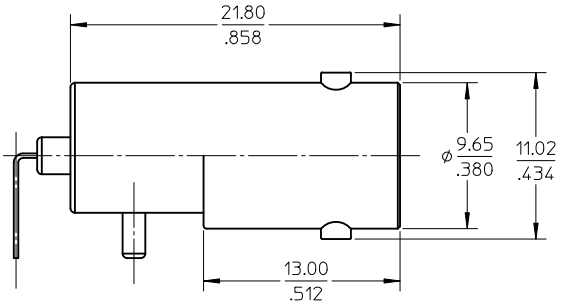
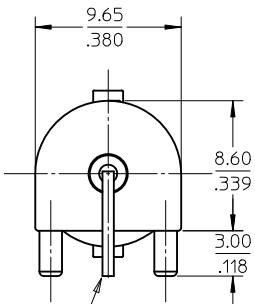
MATERIALES AND FINISHES

- BODY ZINC ALLOY
PLATED TIN
- CENTER CONTACT PHOSPHOR BRONZE
PLATED GOLD / TIN
- INSULATOR POLYPROPYLENE



RECOMMENDED PCB PATTERN

THIS LEAD IS FORMED TO FIT
RECOMMENDED PCB PATTERN
DURING INSTALLATION



BOTTOM VIEW

73171-4230	ONE PER BAG
73100-0154	TRAY
PART NO.	PACKAGING

PS-89675-1030	PRODUCT SPECIFICATIONS
SPECIFICATION	DESCRIPTION

CHG: ADD -4230 EC NO: URF2011-0634 DRWN: JWIENER 2011/04/27 CHKD: SSS 2011/04/27 APPR: JWIENER 2011/05/02	QUALITY SYMBOLS	GENERAL TOLERANCES (UNLESS SPECIFIED)	DIMENSION STYLE		SCALE	DESIGN UNITS	THIRD ANGLE PROJECTION
	<p>$\nabla = 0$</p> <p>$\square = 0$</p>		mm	INCH	MM/IN	METRIC	
DESCRIPTION	4 PLACES	\pm ---	\pm ---	DRAWN BY	DATE	TITLE	
REV	3 PLACES	\pm ---	\pm ---	CHECKED BY	DATE	BNC JACK R/A PCB	
	2 PLACES	± 0.25	\pm ---	A CHANG	1994/09/08	50 OHM	
	1 PLACE	± 0.25	\pm ---	APPROVED BY	DATE	BNC-JPCB	
	ANGULAR	\pm ---°		A CHANG	1994/09/08	MOLEX INCORPORATED	
				MATERIAL NO.	DOCUMENT NO.	MOLEX INCORPORATED	
				SEE TABLE	SD-73100-0154	MOLEX INCORPORATED	
				SIZE		SHEET NO.	
				A3		1 OF 1	
				THIS DRAWING CONTAINS INFORMATION THAT IS PROPRIETARY TO MOLEX INCORPORATED AND SHOULD NOT BE USED WITHOUT WRITTEN PERMISSION			

MATERIALS AND FINISHES

SEE SD-73100-0154

P/N: 73171-4230: THIS IS P/N: 73100-0154 PLACED IN A SINGLE BAG

CHG: NEW RELEASE EC NO: URF2011-0634 DRWN: JWIENER 2011/04/29 CHKD: SSS 2011/04/29 APPR: JWIENER 2011/05/02	REV	DESCRIPTION
	A	

QUALITY SYMBOLS
▼=0
▽=0

GENERAL TOLERANCES (UNLESS SPECIFIED)
mm INCH
4 PLACES ± --- ± ---
3 PLACES ± --- ± ---
2 PLACES ± --- ± ---
1 PLACE ± --- ± ---
ANGULAR ± --- °
DRAFT WHERE APPLICABLE MUST REMAIN WITHIN DIMENSIONS

DIMENSION STYLE	
MM/IN	
DRAWN BY	DATE
JWIENER	2011/04/29
CHECKED BY	DATE
SSS	2011/04/29
APPROVED BY	DATE
JWIENER	2011/05/02
MATERIAL NO.	
SEE TABLE	
SIZE	
C	

SCALE	DESIGN UNITS	THIRD ANGLE PROJECTION
	METRIC	☉
TITLE		
BNC JACK R/A PCB THRU-HOLE 50 OHMS BNC-JPCB EWR-N/A		
MOLEX INCORPORATED		
DOCUMENT NO.	SHEET NO.	
SD-73171-423	1 OF 1	
THIS DRAWING CONTAINS INFORMATION THAT IS PROPRIETARY TO MOLEX INCORPORATED AND SHOULD NOT BE USED WITHOUT WRITTEN PERMISSION		