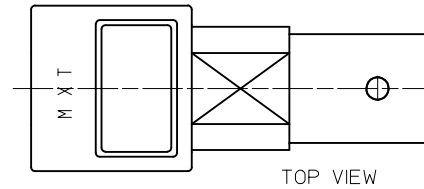


CONSTRUCTION:
 BODY-----ZINC ALLOY
 CENTER CONTACT---PHOSPHOR BRONZE
 INSULATOR-----TEFLON
 SOLDER TAIL-----COPPER OVER STEEL
 BOARD LOCK-----PHOSPHOR BRONZE

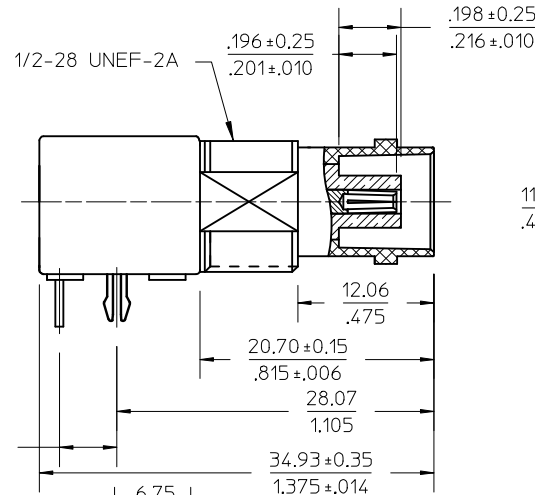
FINISH:
 BODY-----NICKEL PLATING (70 MICROINCHES)
 CENTER CONTACT---GOLD PLATING (10 MICROINCHES)
 SOLDER TAIL-----TIN PLATING (150 MICROINCHES)
 BOARD LOCK-----TIN PLATING (200 MICROINCHES)

MECHANICAL & ELECTRICAL CHARACTERISTICS:
 PER PRODUCT SPECIFICATION PS-73598-0051

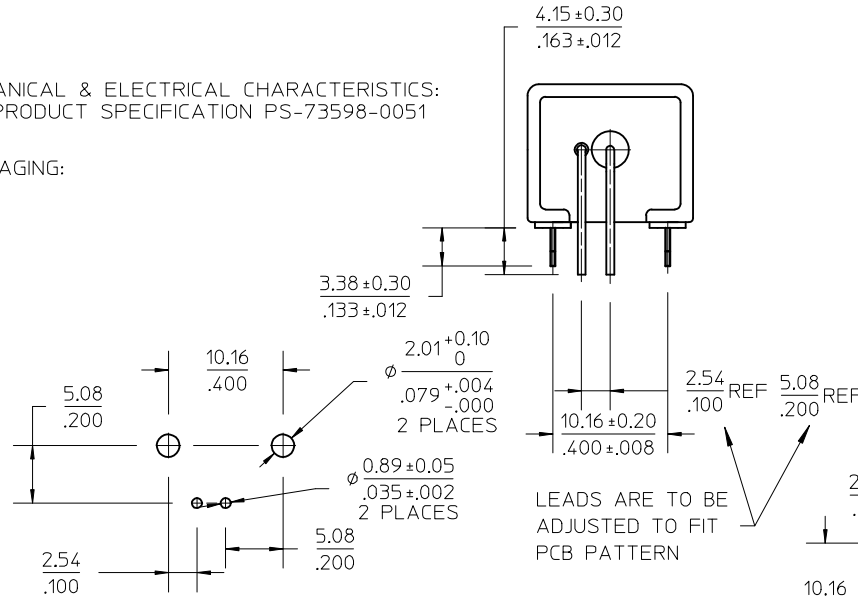
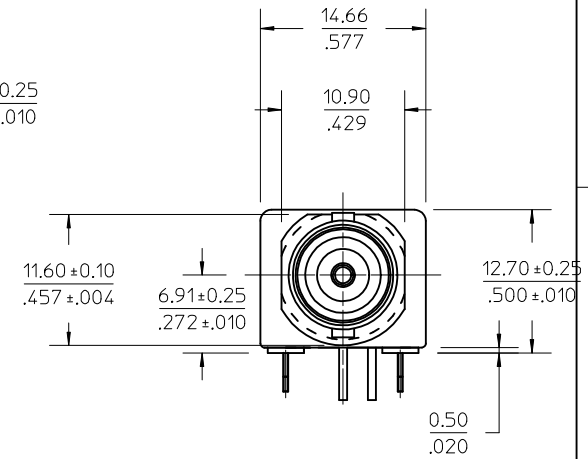
PACKAGING:
 TRAY



TOP VIEW

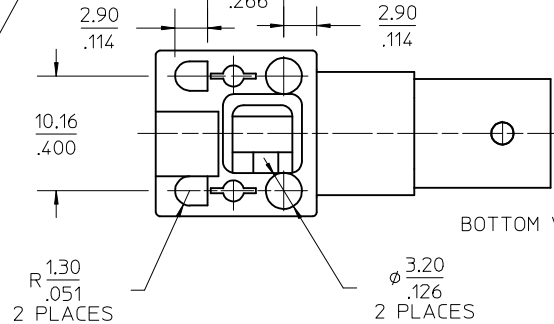


.198±0.25
.216±0.10

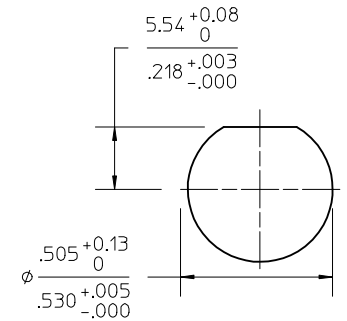


RECOMMENDED PCB HOLE CONFIGURATION

PART # 73171-2360



BOTTOM VIEW



RECOMMENDED MOUNTING HOLE
 RECOMMENDED MOUNTING TORQUE : 12.0 IN-LBS MAX.
 PANEL THICKNESS : .216(5.4 mm) MAX.

CHG: RELEASE.	EC NO: URF2005-0060	2004/09/10
	DRWN: AROBERTS	2004/09/10
	CHKD: SSHAH	2004/09/10
	APPR: JWIENER	2004/09/10
REV	DESCRIPTION	
A		

QUALITY SYMBOLS	▽=0
	∇=0

GENERAL TOLERANCES (UNLESS SPECIFIED)	mm	INCH	
	4 PLACES	± ---	± ---
	3 PLACES	± ---	± ---
	2 PLACES	± ---	± ---
	1 PLACE	± ---	± ---
ANGULAR ± 2 °			
DRAFT WHERE APPLICABLE MUST REMAIN WITHIN DIMENSIONS			

DIMENSION STYLE	
MM/IN	
DRAWN BY	DATE
AZR	2004/04/30
CHECKED BY	DATE
SSS	2004/04/30
APPROVED BY	DATE
JDW	2004/04/30
MATERIAL NO.	
731712360	
SIZE	
A	

SCALE	DESIGN UNITS	THIRD ANGLE PROJECTION
---	METRIC	⊙ □
TITLE		
BNC R/A PCB JACK 50 OHM DIE CAST, EWR-2439 BNC-J/PCB		
molex MOLEX INCORPORATED		
DOCUMENT NO.	SHEET NO.	
SD-73171-236	1 OF 1	
THIS DRAWING CONTAINS INFORMATION THAT IS PROPRIETARY TO MOLEX INCORPORATED AND SHOULD NOT BE USED WITHOUT WRITTEN PERMISSION		