

MATERIALS AND FINISHES

BODY, CAP: ZINC ALLOY
PLATED NICKEL

CENTER CONTACT: PHOSPHOR BRONZE
PLATED GOLD

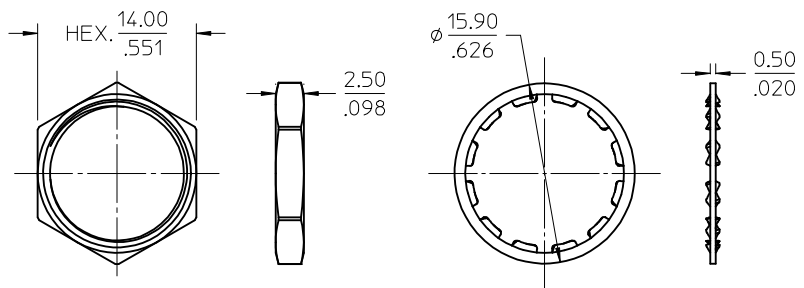
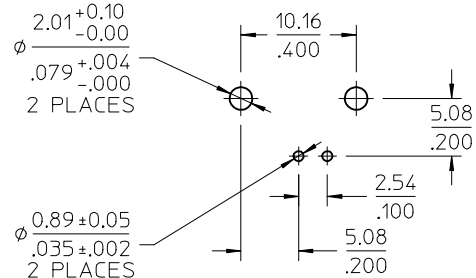
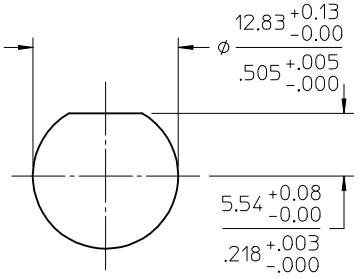
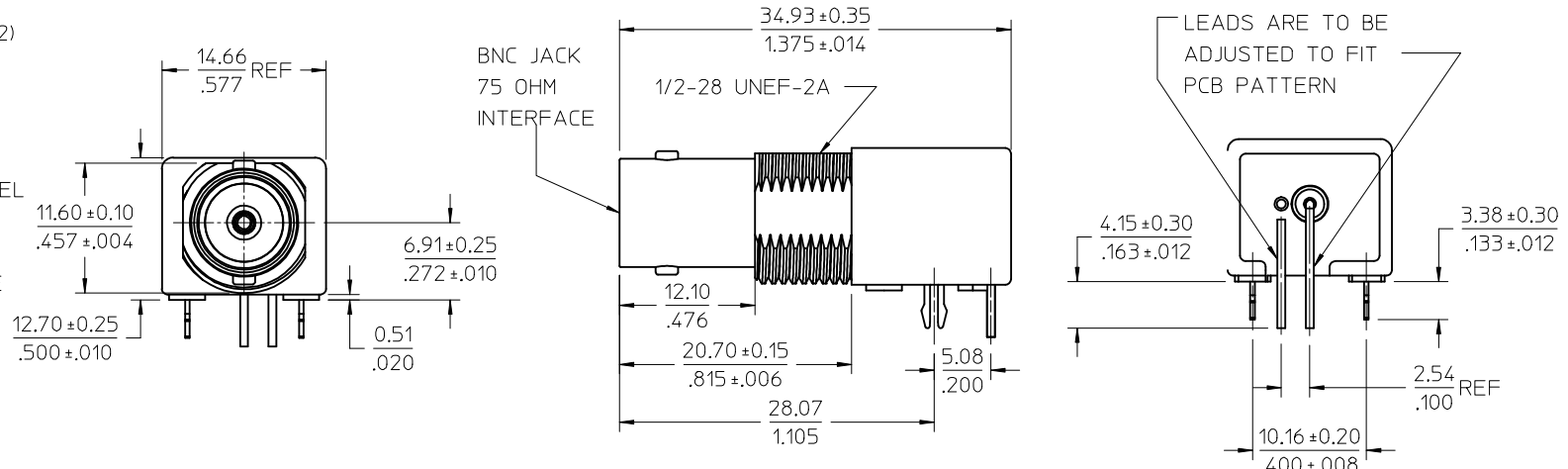
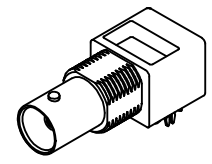
INSULATOR: POLYPROPYLENE(94V2)

BOARD LOCK: PHOSPHOR BRONZE
PLATED TIN

SOLDER TAIL: COPPER OVER STEEL
PLATED TIN

LOCKWASHER: PHOSPHOR BRONZE
PLATED NICKEL

JAM NUT: BRASS
PLATED NICKEL



RECOMMENDED MOUNTING HOLE
PANEL THICKNESS: 5.40(.216) MAX.
RECOMMENED MOUNTING TORQUE:
1.36 N-m(12 INCH LBS) MAX.

RECOMMENDED PCB HOLE
CONFIGURATION

73171-0561	ONE PER BAG
73171-0560	BULK
PART NO.	PACKAGING

PS-89675-1030	PRODUCT SPECIFICATION
SPECIFICATION	DESCRIPTION

CHG: ADD -0561	DESCRIPTION
EC NO: URF-2012-0448	DRW: BOMALLEY
CHK: DAZR	APP: WIENER
REV: A2	

QUALITY SYMBOLS	GENERAL TOLERANCES (UNLESS SPECIFIED)
▽=0	mm INCH
▽=0	4 PLACES ± --- ± ---
	3 PLACES ± --- ± ---
	2 PLACES ± --- ± ---
	1 PLACE ± --- ± ---
	ANGULAR ± 2 °
	DRAFT WHERE APPLICABLE MUST REMAIN WITHIN DIMENSIONS

DIMENSION STYLE	SCALE	DESIGN UNITS	THIRD ANGLE PROJECTION
MM/IN		METRIC	
DRAWN BY	DATE	TITLE	
CWE102	2011/09/13	BNC JACK R/A PCB, 75 OHM DIE CAST BNC-J/RA/PCB	
CHECKED BY	DATE		
AZR	2012/2/1		
APPROVED BY	DATE		
JWIENER	2012/02/06		
MATERIAL NO.	DOCUMENT NO.		
SEE TABLE	SD-73171-056		
SIZE			
C			

MATERIAL NO.	DOCUMENT NO.	SHEET NO.
		1 OF 1
THIS DRAWING CONTAINS INFORMATION THAT IS PROPRIETARY TO MOLEX INCORPORATED AND SHOULD NOT BE USED WITHOUT WRITTEN PERMISSION		