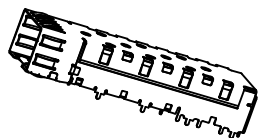


SFP Cage - Exploded View

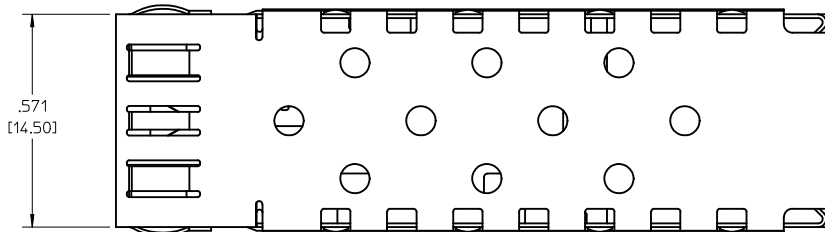
- 1 Material tin plated phosphor-bronze or comparable alloy .010" thick.
- 2 Cage accepts all MSA Small Form-factor Pluggable adapters such as Molex patch cable assembly 73929.
- 3 Sales Drawing Set SD-73927-001 depicts details of press-fit version of cage.
- 4 Sales Drawing Set SD-73927-003 depicts details of surface mount version of cage.

ASSOCIATED PARTS	
MATERIAL NO.	DESCRIPTION
73927-0020	SFP CAGE COVER
73927-0040	SFP CAGE BASE

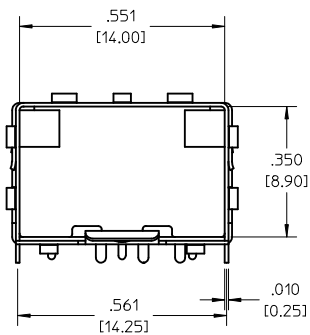
RE-RELEASE - FIX GLITCH EC NO: USY2010-0495 DRWN:MMCKERVEY2010/04/19 CHKD:KJANOTA 2010/04/27 APPR:KJANOTA 2010/04/28	QUALITY SYMBOLS	GENERAL TOLERANCES (UNLESS SPECIFIED)	SCALE 3:1	DESIGN UNITS METRIC	THIRD ANGLE PROJECTION	REVISE ON CAD ONLY	
	DESCRIPTION ▼ = 0 ∇ = 0	mm	INCH	DIMENSION STYLE IN/MM		TITLE SFP CAGE ASSEMBLY SOLDER POST VERSION	
		4 PLACES ± .005	± .005	DRAWN BY DIRKERS	DATE 2000/09/05		
	REV B1	3 PLACES ± .005	± .005	CHECKED BY DOYE	DATE 2000/09/05	MOLEX INCORPORATED MATERIAL NO. 73927-0002 DOCUMENT NO. SD-73927-002 SHEET NO. 1 OF 6	
2 PLACES ± .005		± .005	APPROVED BY RUSSELL DATE 2000/09/05				
	1 PLACE ± 0.13	± .005	DRAFT WHERE APPLICABLE MUST REMAIN WITHIN DIMENSIONS		THIS DRAWING CONTAINS INFORMATION THAT IS PROPRIETARY TO MOLEX INCORPORATED AND SHOULD NOT BE USED WITHOUT WRITTEN PERMISSION		



ISOMETRIC
SCALE 1:1



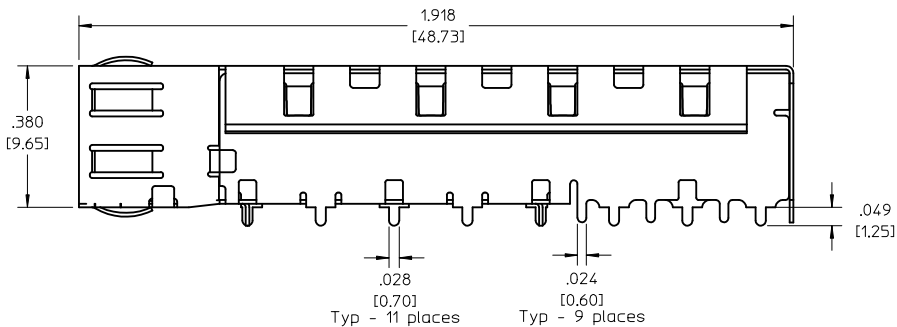
.571
[14.50]



.551
[14.00]

.350
[8.90]

.561 [14.25] .010 [0.25]



1.918
[48.73]

.380
[9.65]

.049
[1.25]

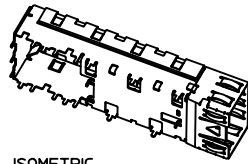
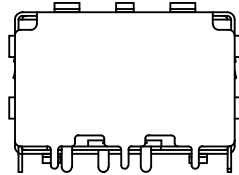
.028 [0.70] Typ - 11 places
.024 [0.60] Typ - 9 places

1 Solder posts sized to fit MSA standard hole pattern and sizes

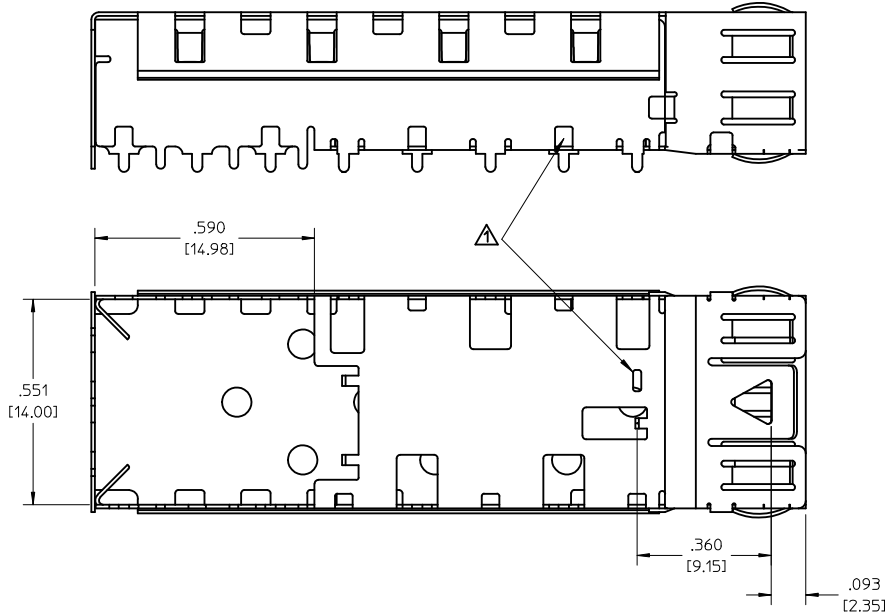
RE-RELEASE - FIX GLITCH EC NO: USY2010-0495 DRWN:MMCKERVE/2010/04/19 CHKD:KJANOTA 2010/04/27 APPR:KJANOTA 2010/04/28 B1	QUALITY SYMBOLS	GENERAL TOLERANCES (UNLESS SPECIFIED)	SCALE 5:1	DESIGN UNITS METRIC	THIRD ANGLE PROJECTION	REVISE ON CAD ONLY
	▽ = 0 ∇ = 0	4 PLACES ± --- ± --- 3 PLACES ± --- ± .005 2 PLACES ± --- ± --- 1 PLACE ± 0.13 ± --- ANGULAR ± 1/2°	DIMENSION STYLE IN/MM		TITLE	
			DRAWN BY DIRKERS DATE 2000/09/05		SFP CAGE ASSEMBLY SOLDER POST VERSION	
	DESCRIPTION	DRAFT WHERE APPLICABLE MUST REMAIN WITHIN DIMENSIONS	CHECKED BY DOYE DATE 2000/09/05		MATERIAL NO. 73927-0002	
APPROVED BY RUSSELL DATE 2000/09/05			DOCUMENT NO. SD-73927-002		SHEET NO. 2 OF 6	



THIS DRAWING CONTAINS INFORMATION THAT IS PROPRIETARY TO MOLEX INCORPORATED AND SHOULD NOT BE USED WITHOUT WRITTEN PERMISSION

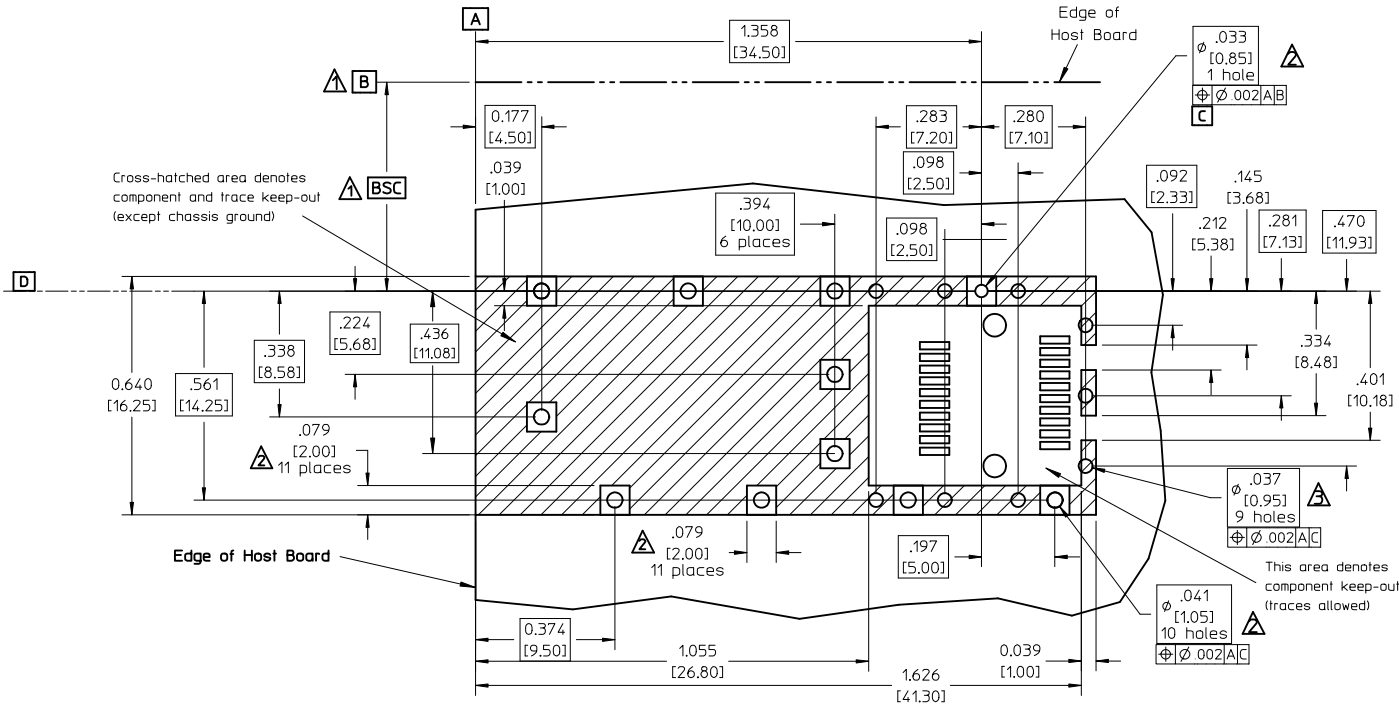


ISOMETRIC
SCALE 1:1



▲ Countercuts accept press-fit pins or solder posts of cage mounted on underside of same host PCB.

RE-RELEASE - FIX GLITCH EC NO: USY2010-0495 DRWN:MMCKERVEY2010/04/19 CHKD:KJANOTA 2010/04/27 APPR:KJANOTA 2010/04/28	QUALITY SYMBOLS	GENERAL TOLERANCES (UNLESS SPECIFIED)		SCALE 5:1	DESIGN UNITS METRIC	THIRD ANGLE PROJECTION	REVISE ON CAD ONLY	
	▼ .0 ∇ .0		mm	INCH	DIMENSION STYLE IN/MM		TITLE	
		4 PLACES	± ---	± ---	DRAWN BY DIRKERS		DATE 2000/09/05	
		3 PLACES	± ---	± .005	CHECKED BY DOYE		DATE 2000/09/05	
		± 0.13	± ---	APPROVED BY RUSSELL		DATE 2000/09/05		
		ANGULAR ±1/2°		MATERIAL NO. 73927-0002		DOCUMENT NO. SD-73927-002		
		DRAFT WHERE APPLICABLE MUST REMAIN WITHIN DIMENSIONS		SHEET NO. 3 OF 6		MOLEX INCORPORATED		
B1		THIS DRAWING CONTAINS INFORMATION THAT IS PROPRIETARY TO MOLEX INCORPORATED AND SHOULD NOT BE USED WITHOUT WRITTEN PERMISSION						B

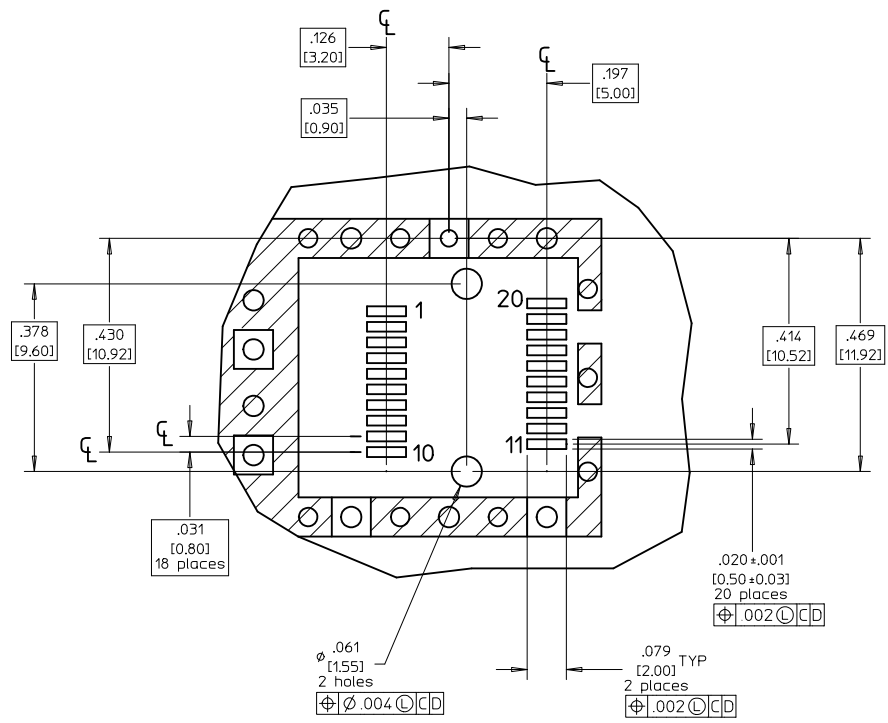


Cross-hatched area denotes component and trace keep-out (except chassis ground)

This area denotes component keep-out (traces allowed)

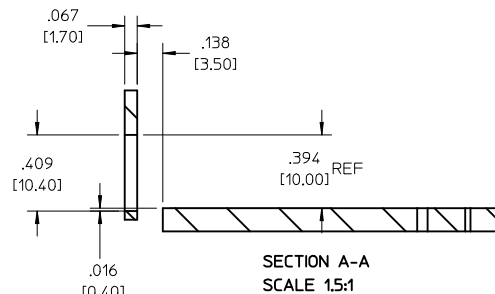
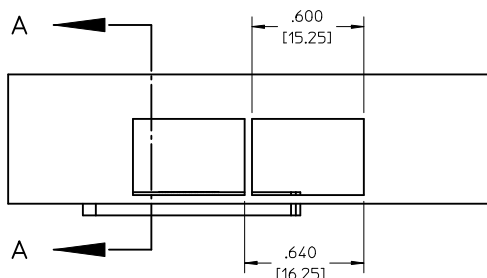
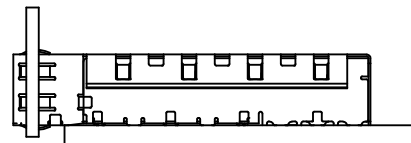
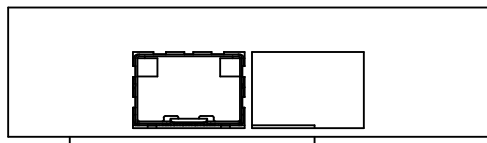
- ▲ Datum and basic dimensions established by customer.
- ▲ Vias and pads chassis ground, plated through, 11 places. Pads optional.
- ▲ Holes optionally plated through.
- 4. Hole pattern allows two parts to be mounted "belly-to-belly" on .090-.125" nom. boards. Hole layout shown for one side only. Transceiver profile determines minimum board thickness in "belly-to-belly" applications.
- 5. "Belly-to-belly" mounting on boards < .090" nom. requires modifying some cage features.

RE-RELEASE - FIX GLITCH EC NO: USY2010-0495 DRWN:MMCKERVEY 2010/04/19 CHKD:KJANOTA 2010/04/27 APPR:KJANOTA 2010/04/28	QUALITY SYMBOLS	GENERAL TOLERANCES (UNLESS SPECIFIED)	SCALE 3:1	DESIGN UNITS METRIC	THIRD ANGLE PROJECTION	REVISE ON CAD ONLY
	▼ = 0	4 PLACES ± --- ± ---	mm	DIMENSION STYLE IN/MM	SFP CAGE ASSEMBLY SOLDER POST VERSION	
	▽ = 0	3 PLACES ± --- ± .005	INCH	DRAWN BY DIRKERS DATE 2000/09/05		
		2 PLACES ± --- ± ---	ANGULAR ± 1/2°	CHECKED BY DOYE DATE 2000/09/05	MATERIAL NO. 73927-0002	
B1		DRAFT WHERE APPLICABLE MUST REMAIN WITHIN DIMENSIONS	APPROVED BY RUSSELL DATE 2000/09/05	MATERIAL NO. 73927-0002		DOCUMENT NO. SD-73927-002
			THIS DRAWING CONTAINS INFORMATION THAT IS PROPRIETARY TO MOLEX INCORPORATED AND SHOULD NOT BE USED WITHOUT WRITTEN PERMISSION		SHEET NO. 4 OF 6	



- 1 Hole pattern shown depicts both sets of holes needed for mounting two cages "belly-to-belly".
- 2 Connector pad pattern per MSA, will accommodate surface mount Molex connector 74441-0001 or equivalent.

RE-RELEASE - FIX GLITCH EC NO: USY2010-0495 DRWN: MMCKERVEY 2010/04/19 CHKD: KJANOTA 2010/04/27 APPR: KJANOTA 2010/04/28	QUALITY SYMBOLS ▽ = 0 ∇ = 0	GENERAL TOLERANCES (UNLESS SPECIFIED)		SCALE 3:1	DESIGN UNITS METRIC	THIRD ANGLE PROJECTION	REVISE ON CAD ONLY																
		<table border="1"> <thead> <tr> <th></th> <th>mm</th> <th>INCH</th> </tr> </thead> <tbody> <tr> <td>4 PLACES</td> <td>± .---</td> <td>± .---</td> </tr> <tr> <td>3 PLACES</td> <td>± .---</td> <td>± .005</td> </tr> <tr> <td>2 PLACES</td> <td>± .---</td> <td>± .---</td> </tr> <tr> <td>1 PLACE</td> <td>± 0.13</td> <td>± .---</td> </tr> </tbody> </table>			mm	INCH	4 PLACES	± .---	± .---	3 PLACES	± .---	± .005	2 PLACES	± .---	± .---	1 PLACE	± 0.13	± .---	DIMENSION STYLE IN/MM		TITLE SFP CAGE ASSEMBLY SOLDER POST VERSION		
			mm	INCH																			
		4 PLACES	± .---	± .---																			
3 PLACES	± .---	± .005																					
2 PLACES	± .---	± .---																					
1 PLACE	± 0.13	± .---																					
DRAFT WHERE APPLICABLE MUST REMAIN WITHIN DIMENSIONS		APPROVED BY RUSSELL		DATE 2000/09/05		MATERIAL NO. 73927-0002																	
B1		DESCRIPTION		DOYNE 2000/09/05		DOCUMENT NO. SD-73927-002																	
						SHEET NO. 5 OF 6																	
						THIS DRAWING CONTAINS INFORMATION THAT IS PROPRIETARY TO MOLEX INCORPORATED AND SHOULD NOT BE USED WITHOUT WRITTEN PERMISSION																	



1 Relational geometry per MSA standard.

RE-RELEASE - FIX GLITCH
 EC NO: USY2010-0495
 DRWN:MMCKERVEY2010/04/19
 CHKD:KJANOTA 2010/04/27
 APPR:KJANOTA 2010/04/28

REV	DESCRIPTION
B1	

QUALITY SYMBOLS	GENERAL TOLERANCES (UNLESS SPECIFIED)	
	mm	INCH
= 0	4 PLACES ± ---	± ---
	3 PLACES ± ---	± .005
	2 PLACES ± ---	± ---
	1 PLACE ± 0.13	± ---
= 0	ANGULAR ± 1/2°	
	DRAFT WHERE APPLICABLE	
	MUST REMAIN WITHIN DIMENSIONS	

SCALE 3:1	DESIGN UNITS METRIC
DIMENSION STYLE IN/MM	
DRAWN BY DIRKERS	DATE 2000/09/05
CHECKED BY DOYE	DATE 2000/09/05
APPROVED BY RUSSELL	DATE 2000/09/05

	THIRD ANGLE PROJECTION	REVISE ON CAD ONLY
TITLE SFP CAGE ASSEMBLY SOLDER POST VERSION		
MOLEX INCORPORATED		
MATERIAL NO. 73927-0002	DOCUMENT NO. SD-73927-002	SHEET NO. 6 OF 6
THIS DRAWING CONTAINS INFORMATION THAT IS PROPRIETARY TO MOLEX INCORPORATED AND SHOULD NOT BE USED WITHOUT WRITTEN PERMISSION		

20 19 18 17 16 15 14 13 12 11 10 9 8 7 6 5 4 3 2 1

M

L

K

J

I

H

G

F

E

D

C

B

A

M

L

K

J

I

H

G

F

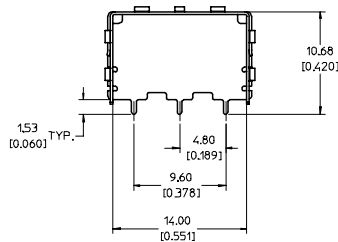
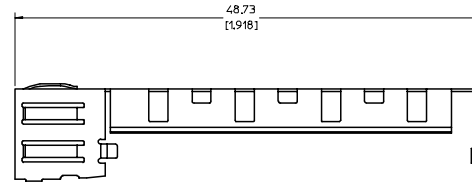
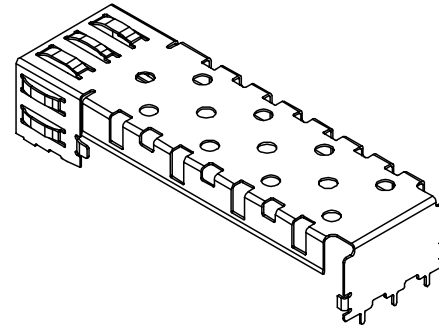
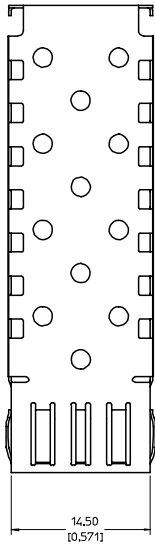
E

D

C

B

A

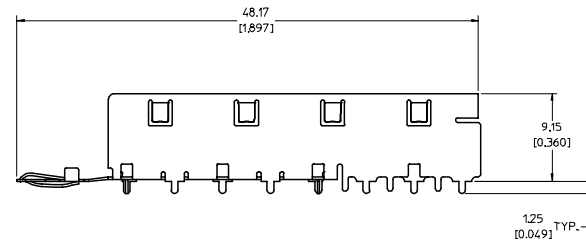
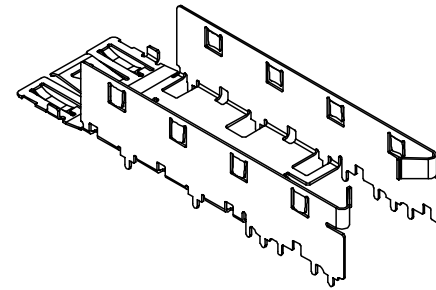
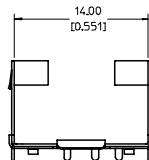
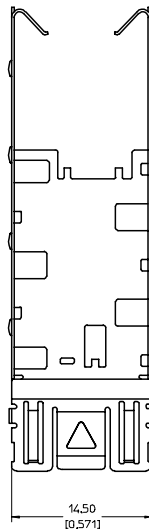


NOTES:

1. MATERIAL: COPPER ALLOY
2. PLATING: BRIGHT TIN
2.54 MICROMETERS TIN (MIN)
OVER 0.76 MICROMETERS (MIN) NICKEL
3. FOR DETAILS OF PCB AND BEZEL LAYOUT REFER TO DOCUMENT SD-73927-100.
4. THIS PRODUCT NOT INTENDED FOR LEAD FREE, (RoHS), REFLOW PROCESS. REFLOW TEMPERATURE SHOULD NOT EXCEED 180°C
5. FOR RoHS COMPLIANT REPLACEMENTS REFER TO MOLEX SERIES 74737.

ENTER DESCRIPTION EC NO: UST2006-0264 DRWN:KIMONSON 2006/07/03 CHKD:BRUSSELL 2006/07/06 APPR:BRUSSELL 2006/07/24 A	QUALITY SYMBOLS	GENERAL TOLERANCES (UNLESS SPECIFIED)		DIMENSION STYLE		SCALE	DESIGN UNITS	THIRD ANGLE PROJECTION	
	▽=0 ▽=0	mm	INCH	MM/IN		4:1	METRIC		
		4 PLACES ± --- ± ---	3 PLACES ± --- ± .005	2 PLACES ± 0.13 ± .01	1 PLACE ± 0.25 ± ---	DRAWN BY: KIMONSON CHECKED BY: BRUSSELL APPROVED BY: BRUSSELL	DATE: 2005/10/12	DATE: 2005/10/12	DATE: 2005/10/12
		ANGULAR ± 1 °		MATERIAL NO. 739270020		DOCUMENT NO. SD-73927-0020		SHEET NO. 1 OF 1	
DRAFT WHERE APPLICABLE MUST REMAIN WITHIN DIMENSIONS		THIS DRAWING CONTAINS INFORMATION THAT IS PROPRIETARY TO MOLEX INCORPORATED AND SHOULD NOT BE USED WITHOUT WRITTEN PERMISSION							

19 18 17 16 15 14 13 12 11 10 9 8 7 6 5 4 3 2 1



NOTES:

1. MATERIAL: COPPER ALLOY
2. PLATING: BRIGHT TIN
2.54 MICROMETERS TIN (MIN)
OVER 0.76 MICROMETERS (MIN) NICKEL
3. FOR DETAILS OF PCB AND BEZEL LAYOUT REFER
TO DOCUMENT SD-73927-100.
4. THIS PRODUCT NOT INTENDED FOR LEAD FREE, (RoHS), REFLOW PROCESS.
REFLOW TEMPERATURE SHOULD NOT EXCEED 180°C
5. FOR RoHS COMPLIANT REPLACEMENTS REFER TO MOLEX SERIES 74737.

ENTER DESCRIPTION EC NO: UST2006-0264 DRAWN BY: DRINKS IMONSON 2006/07/03 CHECKED BY: CHUCK BRUSSELL 2006/07/06 APPR: BRUSSELL 2006/07/24 A	QUALITY SYMBOLS ▽=0 ▽=0	GENERAL TOLERANCES (UNLESS SPECIFIED)		DIMENSION STYLE MM/IN		SCALE 4:1	DESIGN UNITS METRIC	<input checked="" type="checkbox"/> THIRD ANGLE PROJECTION	
		4 PLACES ± --- ± --- 3 PLACES ± --- ± .005 2 PLACES ± 0.13 ± .01 1 PLACE ± 0.25 ± --- ANGULAR ± 1 °	mm INCH mm INCH mm INCH mm INCH	DRAWN BY: KS IMONSON CHECKED BY: BRUSSELL APPROVED BY: BRUSSELL	DATE: 2005/10/12 DATE: 2005/10/12 DATE: 2005/10/12	TITLE SFP CAGE BASE SOLDER POSTS FOR WAVE SOLDER		MOLEX MOLEX INCORPORATED	MATERIAL NO. 739270040
DRAFT WHERE APPLICABLE MUST REMAIN WITHIN DIMENSIONS		SIZE D		THIS DRAWING CONTAINS INFORMATION THAT IS PROPRIETARY TO MOLEX INCORPORATED AND SHOULD NOT BE USED WITHOUT WRITTEN PERMISSION					