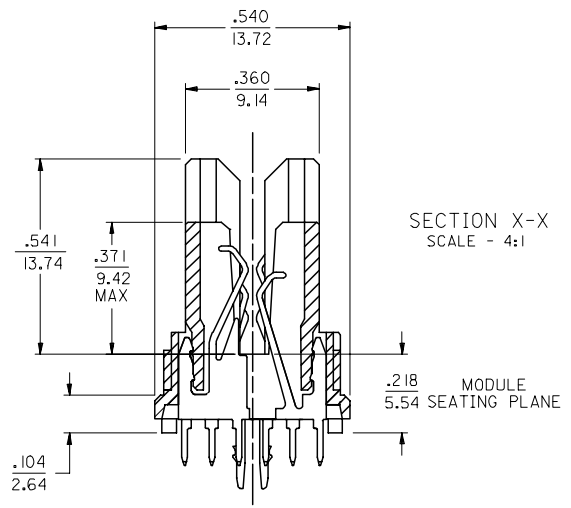
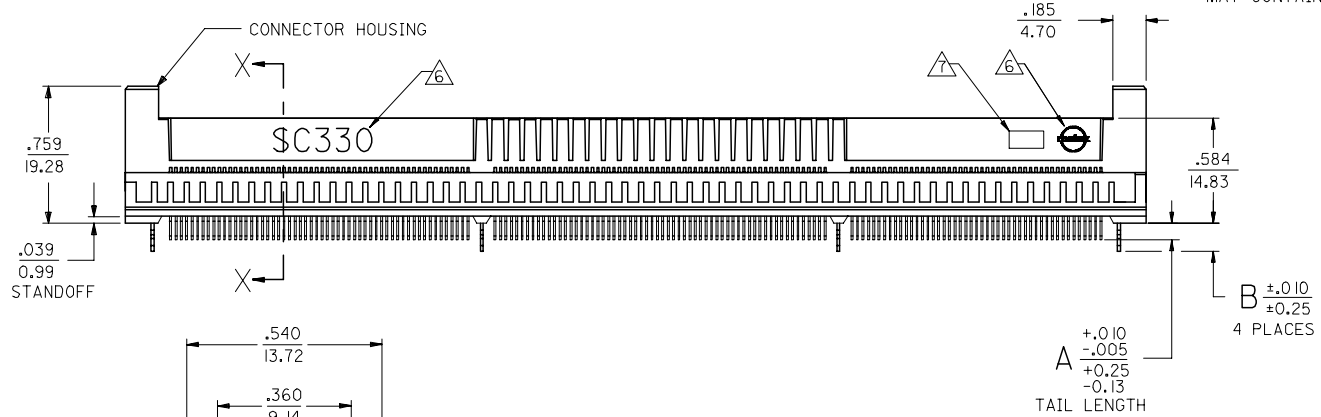
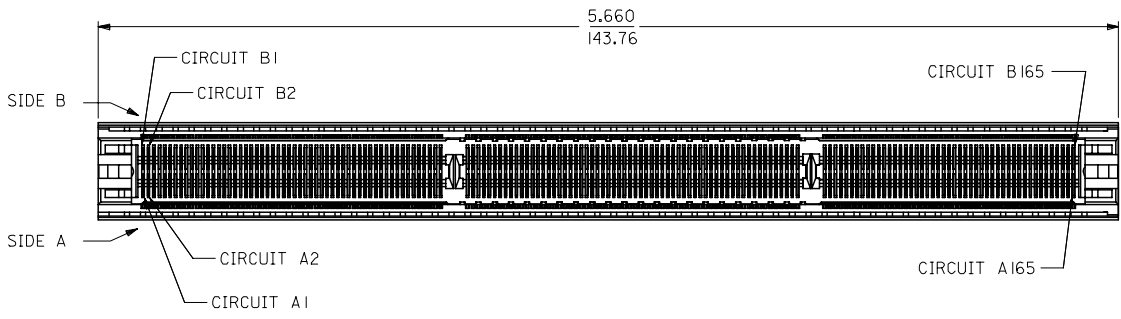


- NOTES:**
- MATERIALS:**
HOUSING - LCP, 30% GLASS FILLED, 94-VO, BLACK.
TERMINALS - PHOSPHOR BRONZE.
METAL FORKLOCKS - PHOSPHOR BRONZE.
 - FINISH:**
TERMINALS - .000030/0.00076 MINIMUM GOLD IN THE CONTACT AREA AND .000075/0.0019 MINIMUM TIN IN SOLDER TAIL AREA OVER .000050/0.0013 MINIMUM NICKEL OVERALL.
METAL FORKLOCKS - .00008/0.002 MINIMUM TIN OVERALL.
 - PRODUCT SPECIFICATION PS-71109-9990 APPLIES.
 - CARD SLOT ACCEPTS .062 +.007/-.005 P.C. BOARD.
 - THE RECOMMENDED PLATING SPECIFICATION FOR THE MATING PC BOARD IS .000030/0.0076 MINIMUM GOLD OVER .000075/0.0019 MINIMUM NICKEL.
 - "SC330" AND MOLEX LOGO SHALL APPEAR ON BOTH SIDES OF HOUSING AND LOCATED APPROXIMATELY AS SHOWN.
 - FOUR DIGIT DATE CODE (YR/WK) SHALL BE LOCATED APPROXIMATELY AS SHOWN.
 - THE PRIMARY SHIPPING CARTON WILL BE LABELED "COMPLIANT TO ROHS DIRECTIVE 2002/95/EC AND ELV ANNEX II OF DIRECTIVE 2000/53/EC". CARTONS WITHOUT THIS LABEL MAY CONTAIN PRODUCT WITH LEAD.

J
I
H
G
F
E
D
C
B
A

J
I
H
G
F
E
D
C
B
A



71109-5007	.140/3.56	.155/3.94
71109-5006	.115/2.92	.155/3.94
71109-5005	.090/2.29	.155/3.94

MAT'L NUMBER	A	B
--------------	---	---

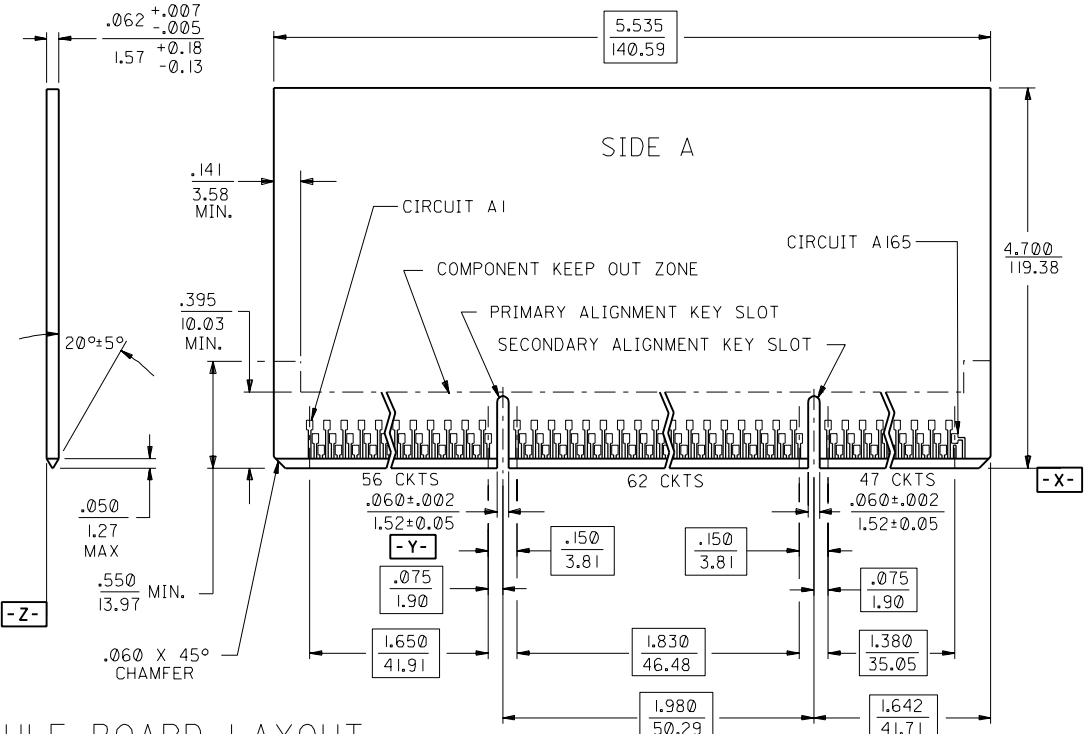
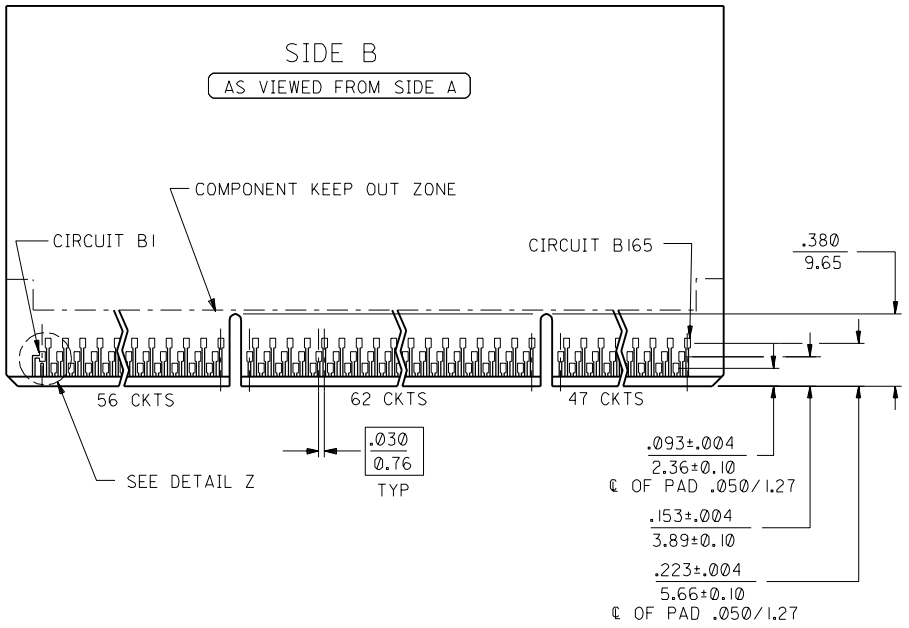
MODIFY 71109-5007 EC NO: UCP2006-1372 DRAWN BY: BARRA 2005/12/19 CHKD: BORGAN 2006/01/05 APPR: MILLER 2006/01/06	QUALITY SYMBOLS =0 =0	GENERAL TOLERANCES (UNLESS SPECIFIED) mm INCH 4 PLACES ± --- ± --- 3 PLACES ± --- ± .005 2 PLACES ± 0.13 ± --- 1 PLACE ± --- ± --- ANGULAR ±1/2°	DIMENSION STYLE IN/MM DRAWN BY: NELSON DATE: 1997/06/20 CHECKED BY: NELSON DATE: 1997/06/20 APPROVED BY: FUNCK DATE: 1997/06/20 MATERIAL NO. SD-71109-503 DOCUMENT NO. SD-71109-503	SCALE 2:1 DESIGN UNITS INCH THIRD ANGLE PROJECTION	2 F 1 J SHT REV
--	-----------------------------	--	---	--	-----------------------

DRAFT WHERE APPLICABLE MUST REMAIN WITHIN DIMENSIONS SEE TABLE	SHEET NO. 1 OF 2
---	------------------

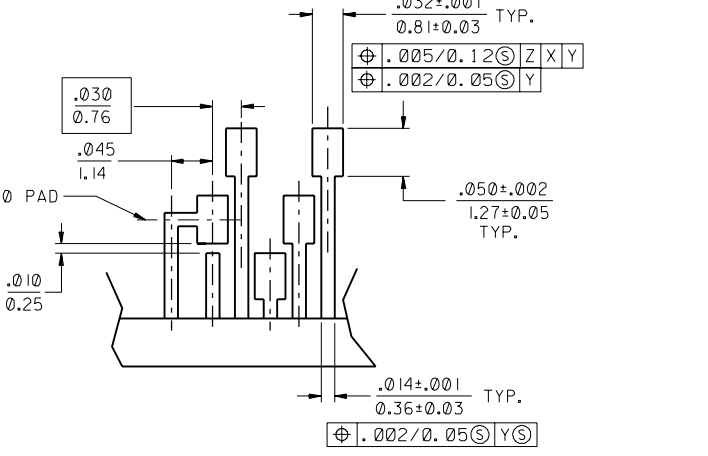
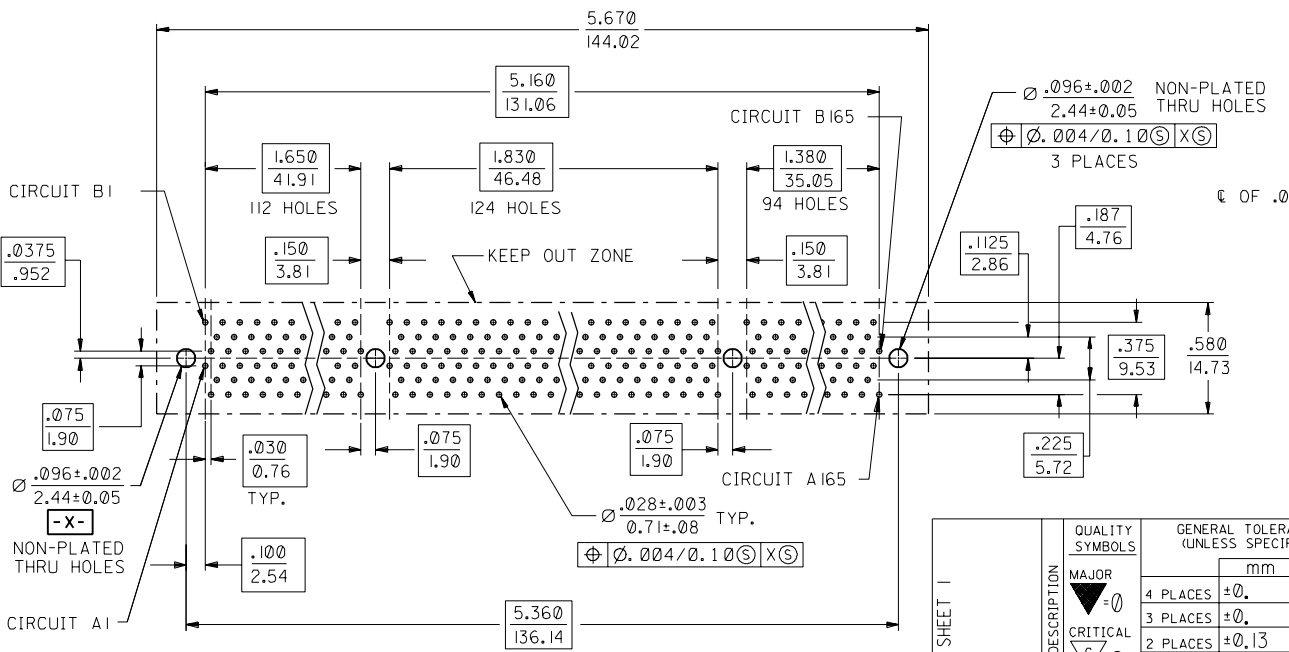
SALES ASSEMBLY
SC330 HISPEC CONNECTOR
W/METAL PEGS

molex MOLEX INCORPORATED

THIS DRAWING CONTAINS INFORMATION THAT IS PROPRIETARY TO MOLEX INCORPORATED AND SHOULD NOT BE USED WITHOUT WRITTEN PERMISSION



RECOMMENDED MODULE BOARD LAYOUT



DETAIL Z SCALE 10:1

RECOMMENDED PCB HOLE LAYOUT

SEE SHEET 1	QUALITY SYMBOLS MAJOR $\nabla = 0$ CRITICAL $\nabla = 0$	GENERAL TOLERANCES: (UNLESS SPECIFIED)		SCALE 2:1	DESIGN UNITS <input type="checkbox"/> mm <input checked="" type="checkbox"/> INCH	THIRD ANGLE PROJECTION <input type="checkbox"/> mm <input checked="" type="checkbox"/> INCH <input type="checkbox"/> mm ONLY	SHT	REV
		4 PLACES ±0.	±.	DRAWN BY & DATE NELSON 06/20/97	TITLE: SALES ASSEMBLY SC330 "HiSpec" CONNECTOR W/METAL FORKLLOCKS		REVISE ON CAD ONLY	
F	DESCRIPTION	3 PLACES ±0.	±.005	CHECKED BY & DATE NELSON 06/20/97	APPROVED BY & DATE FUNCK 06/20/97		MATERIAL NO. SEE TABLE	
		2 PLACES ±0.13	±.	DRAWING NO. SD-71109-503		SHEET NO. 2		
DRAWING NO. LB0RD.DGN REV A 96/06/12 LEVEL 5		ANGULAR: ± 1°		CAD FILENAME S7110968.S02		DRAWING NO. SD-71109-503		SIZE C
DRAFT WHERE APPLICABLE MUST REMAIN WITHIN DIMENSIONS				THIS DRAWING CONTAINS INFORMATION THAT IS PROPRIETARY TO MOLEX INCORPORATED AND SHOULD NOT BE USED WITHOUT WRITTEN PERMISSION.				