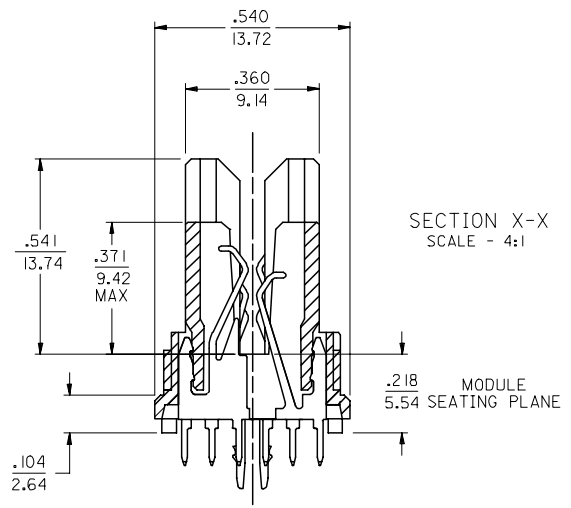
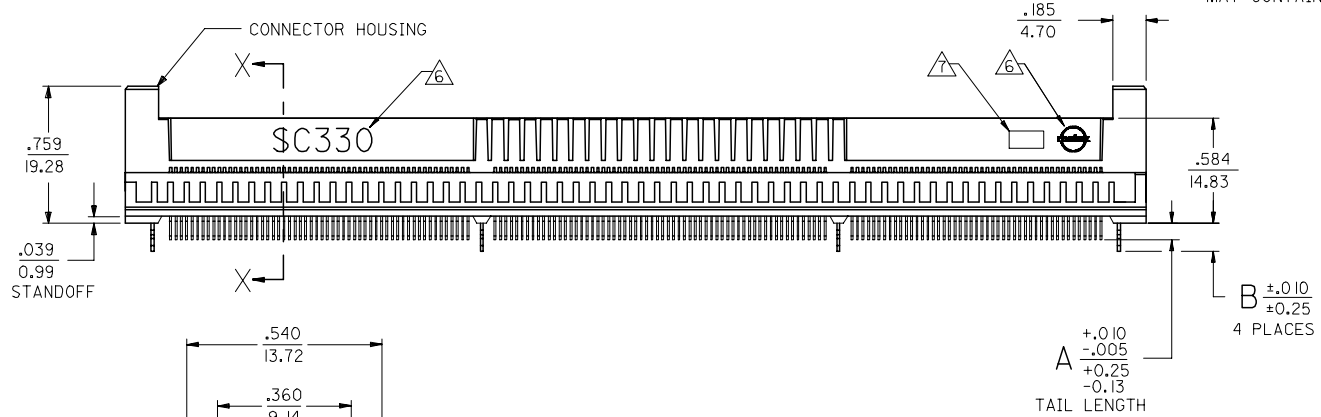
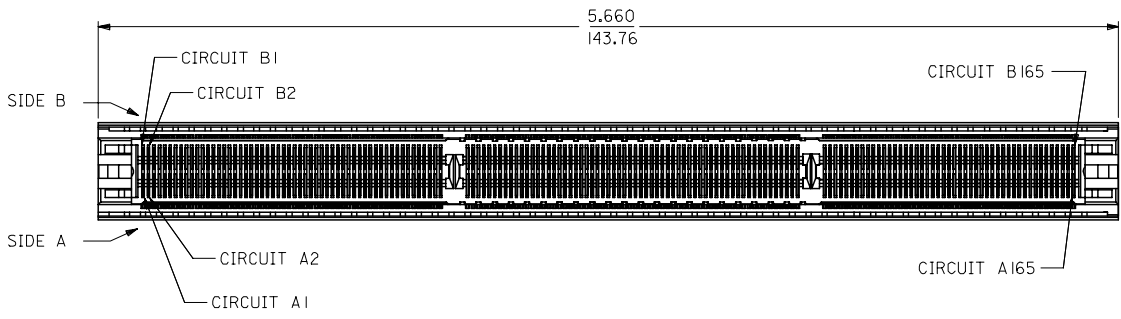


NOTES:

1. MATERIALS:
HOUSING - LCP, 30% GLASS FILLED, 94-VO, BLACK.
TERMINALS - PHOSPHOR BRONZE.
METAL FORKLOCKS - PHOSPHOR BRONZE.
2. FINISH:
TERMINALS - .000030/0.00076 MINIMUM GOLD IN THE CONTACT AREA AND .000075/0.0019 MINIMUM TIN IN SOLDER TAIL AREA OVER .000050/0.0013 MINIMUM NICKEL OVERALL.
METAL FORKLOCKS - .00008/0.002 MINIMUM TIN OVERALL.
3. PRODUCT SPECIFICATION PS-71109-9990 APPLIES.
4. CARD SLOT ACCEPTS .062 +.007/-.005 P.C. BOARD.
5. THE RECOMMENDED PLATING SPECIFICATION FOR THE MATING PC BOARD IS .000030/0.0076 MINIMUM GOLD OVER .000075/0.0019 MINIMUM NICKEL.
6. "SC330" AND MOLEX LOGO SHALL APPEAR ON BOTH SIDES OF HOUSING AND LOCATED APPROXIMATELY AS SHOWN.
7. FOUR DIGIT DATE CODE (YR/WK) SHALL BE LOCATED APPROXIMATELY AS SHOWN.
8. THE PRIMARY SHIPPING CARTON WILL BE LABELED "COMPLIANT TO ROHS DIRECTIVE 2002/95/EC AND ELV ANNEX II OF DIRECTIVE 2000/53/EC". CARTONS WITHOUT THIS LABEL MAY CONTAIN PRODUCT WITH LEAD.



71109-5007	.140/3.56	.155/3.94
71109-5006	.115/2.92	.155/3.94
71109-5005	.090/2.29	.155/3.94

MAT'L NUMBER	A	B
--------------	---	---

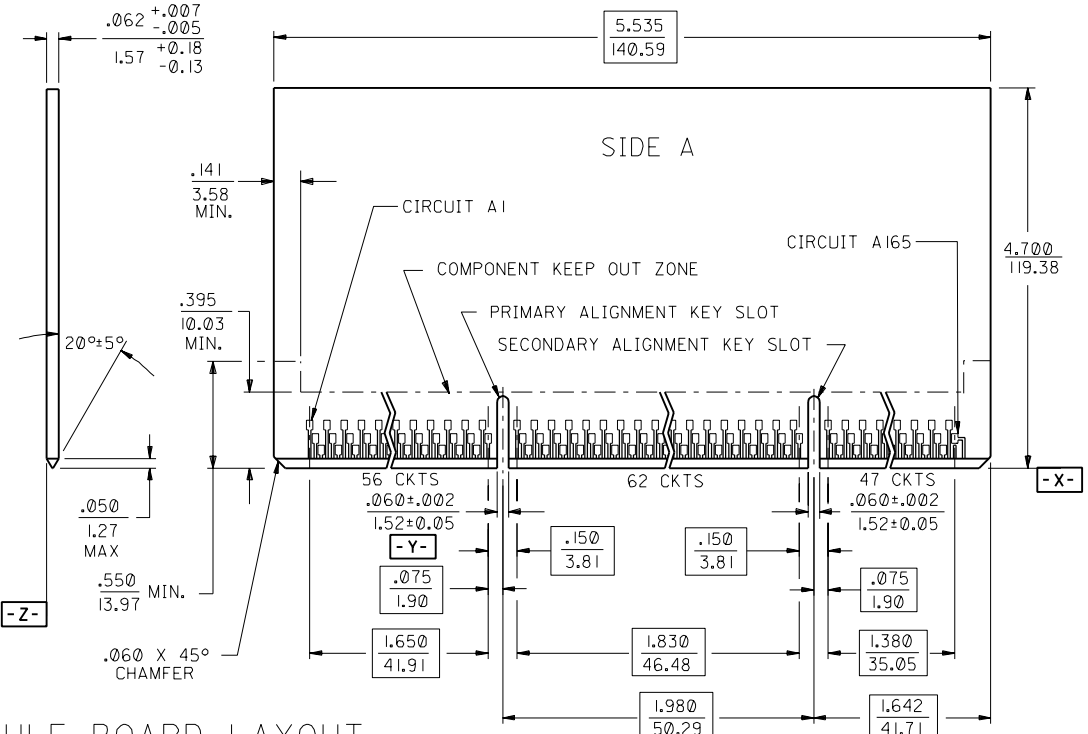
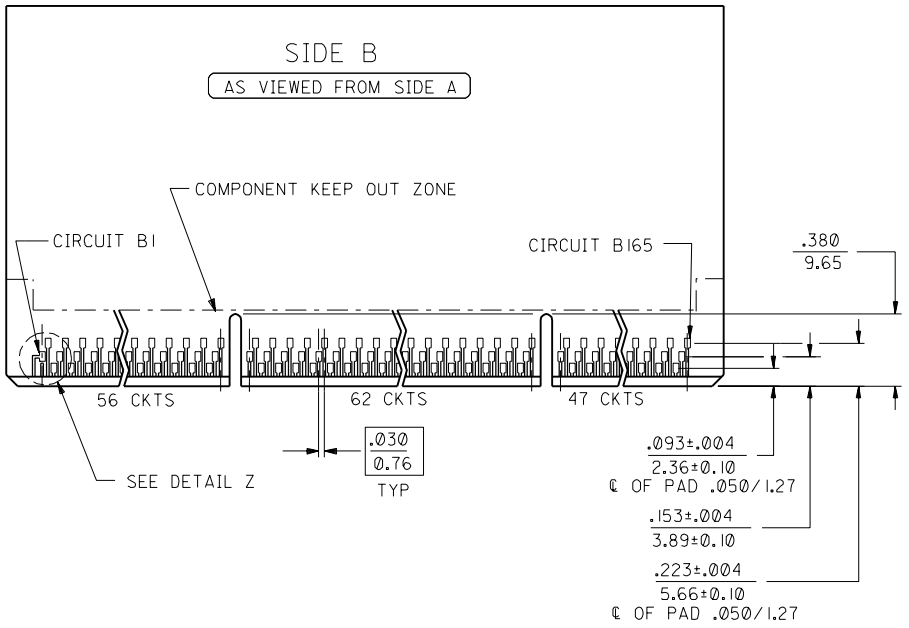
MODIFY 71109-5007	DESCRIPTION
EC NO: UCP2006-1372	
DRWNS:BARRA 2005/12/19	
CHKD:DMORGAN 2006/01/05	
APPR:SMILLER 2006/01/06	

QUALITY SYMBOLS	GENERAL TOLERANCES (UNLESS SPECIFIED)	DIMENSION STYLE	SCALE	DESIGN UNITS	THIRD ANGLE PROJECTION
▽=0		IN/MM	2:1	INCH	
▽=0		mm			
	4 PLACES ± --- ± ---	INCH			
	3 PLACES ± --- ± .005				
	2 PLACES ± 0.13 ± ---				
	1 PLACE ± --- ± ---				
	ANGULAR ±1/2°				
	DRAFT WHERE APPLICABLE MUST REMAIN WITHIN DIMENSIONS				

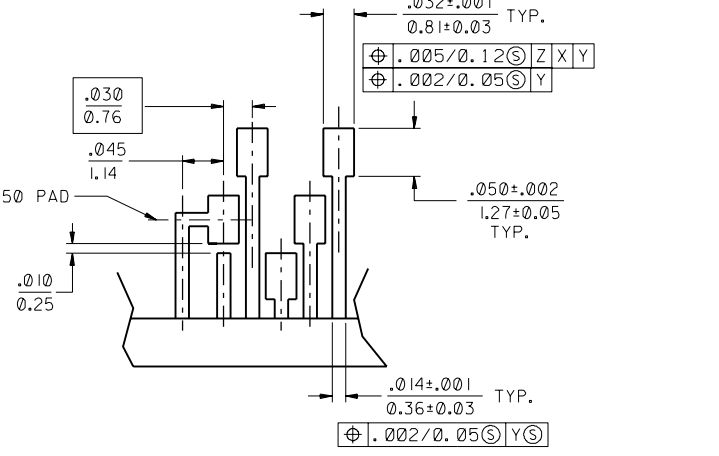
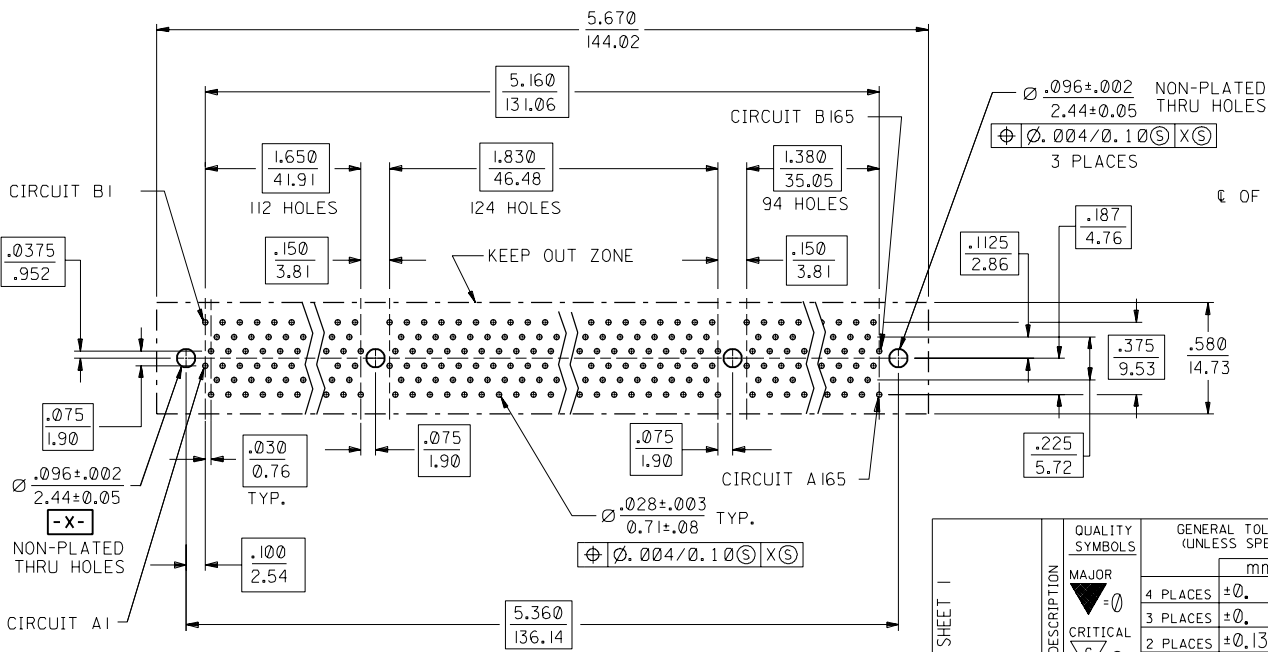
DRAWN BY	DATE	TITLE
NELSON	1997/06/20	SALES ASSEMBLY
CHECKED BY	DATE	SC330 HISPEC CONNECTOR
NELSON	1997/06/20	W/METAL PEGS
APPROVED BY	DATE	
FUNCK	1997/06/20	
MATERIAL NO.	DOCUMENT NO.	SHEET NO.
SEE TABLE	SD-71109-503	1 OF 2

MATERIAL NO.		DOCUMENT NO.	SHEET NO.
SEE TABLE		SD-71109-503	1 OF 2
THIS DRAWING CONTAINS INFORMATION THAT IS PROPRIETARY TO MOLEX INCORPORATED AND SHOULD NOT BE USED WITHOUT WRITTEN PERMISSION			

2	F
1	J
SHT	REV



RECOMMENDED MODULE BOARD LAYOUT



RECOMMENDED PCB HOLE LAYOUT

SEE SHEET 1	QUALITY SYMBOLS MAJOR CRITICAL	GENERAL TOLERANCES: (UNLESS SPECIFIED)		SCALE 2:1	DESIGN UNITS <input type="checkbox"/> mm <input checked="" type="checkbox"/> INCH	THIRD ANGLE PROJECTION <input type="checkbox"/> mm <input checked="" type="checkbox"/> INCH <input type="checkbox"/> mm ONLY	SHT	REV
		4 PLACES ±0.	±.	DRAWN BY & DATE NELSON 06/20/97	TITLE: SALES ASSEMBLY SC330 "HiSpec" CONNECTOR W/METAL FORKLLOCKS		REVISE ON CAD ONLY	
F	DESCRIPTION	3 PLACES ±0.	±.005	CHECKED BY & DATE NELSON 06/20/97	APPROVED BY & DATE FUNCK 06/20/97	MOLEX INCORPORATED		SHEET NO. 2
		2 PLACES ±0.13	±.	CAD FILENAME S7110968.S02	MATERIAL NO. SEE TABLE	DRAWING NO. SD-71109-503	SIZE C	
DRAFT WHERE APPLICABLE MUST REMAIN WITHIN DIMENSIONS		ANGULAR: ± 1°		THIS DRAWING CONTAINS INFORMATION THAT IS PROPRIETARY TO MOLEX INCORPORATED AND SHOULD NOT BE USED WITHOUT WRITTEN PERMISSION.				