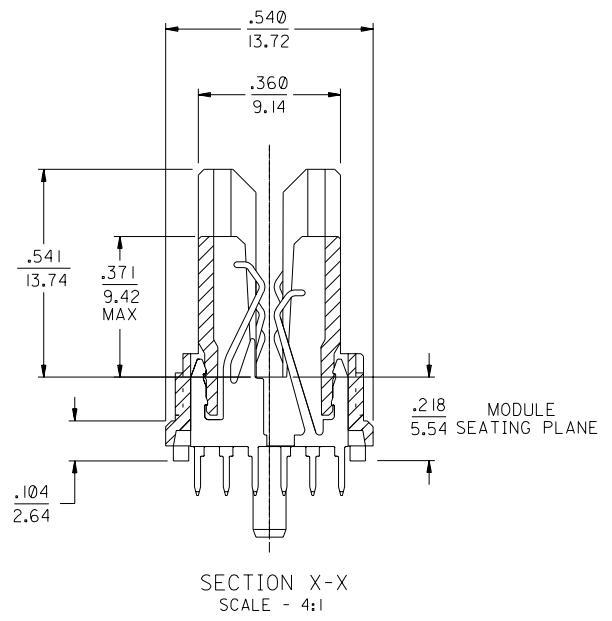
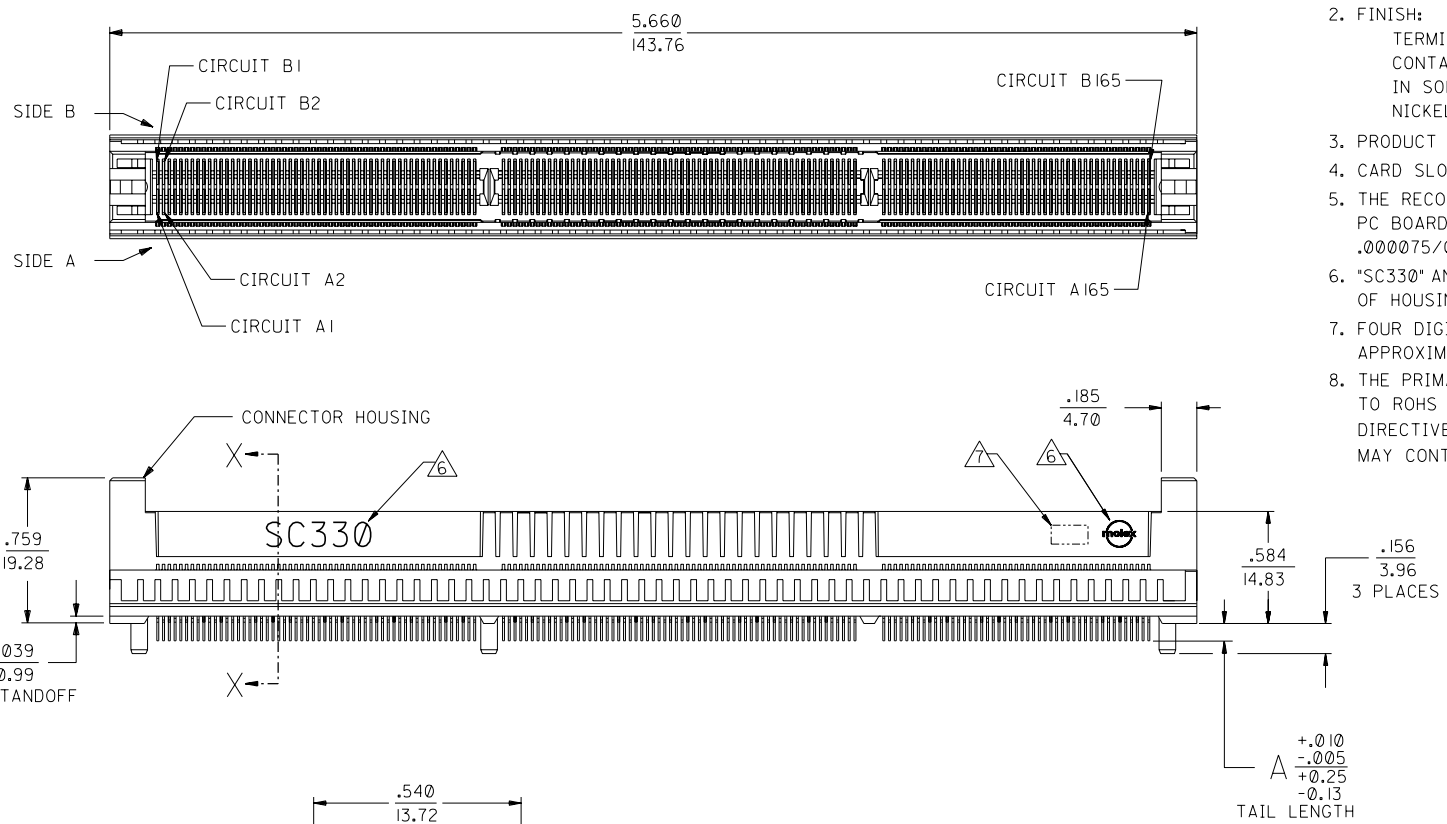


NOTES:

- MATERIALS:
HOUSING - LCP, 30% GLASS FILLED, 94-V0, BLACK.
TERMINALS - PHOSPHOR BRONZE.
- FINISH:
TERMINALS - .000030/0.00076 MINIMUM GOLD IN THE CONTACT AREA AND .000075/0.0019 MINIMUM TIN IN SOLDER TAIL AREA OVER .000050/0.0013 MINIMUM NICKEL OVERALL.
- PRODUCT SPECIFICATION PS-71109-9990 APPLIES.
- CARD SLOT ACCEPTS .062 +.007/-.005 P.C. BOARD.
- THE RECOMMENDED PLATING SPECIFICATION FOR THE MATING PC BOARD IS .000030/0.0076 MINIMUM GOLD OVER .000075/0.0019 MINIMUM NICKEL.
- "SC330" AND MOLEX LOGO SHALL APPEAR ON BOTH SIDES OF HOUSING, AND LOCATED APPROXIMATELY AS SHOWN.
- FOUR DIGIT DATE CODE (YR/WK) SHALL BE LOCATED APPROXIMATELY AS SHOWN.
- THE PRIMARY SHIPPING CARTON WILL BE LABELED "COMPLIANT TO ROHS DIRECTIVE 2002/95/EC AND ELV ANNEX II OF DIRECTIVE 2000/53/EC". CARTONS WITHOUT THIS LABEL MAY CONTAIN PRODUCT WITH LEAD.



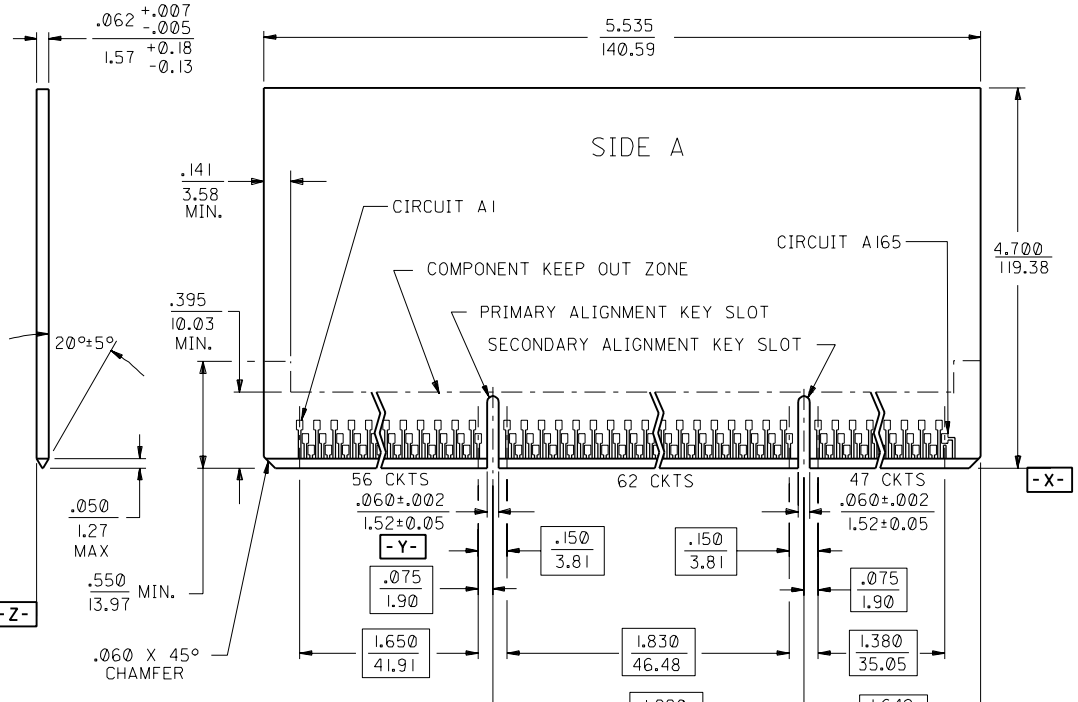
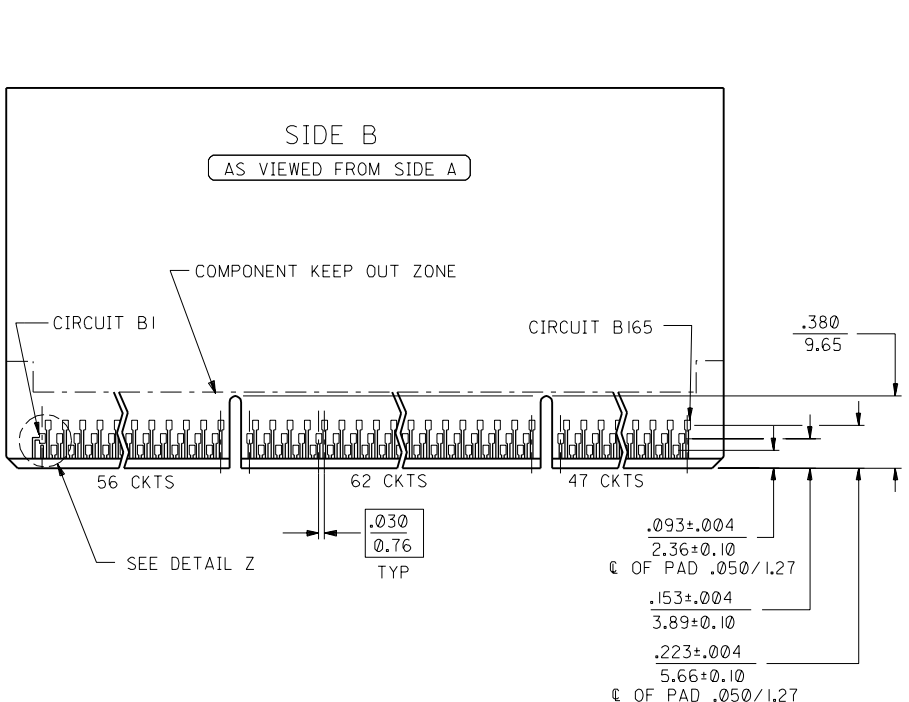
71109-2007	.140/3.56
71109-2006	.115/2.92
71109-2005	.090/2.29
MAT'L NUMBER	A

PLATING CHANGE	EC NO. UCP2004-2347
DRWNR: WHITE	04/05/21
CHK: BBARKER	04/05/21
APPR: SMILLER	04/05/21
REV	H

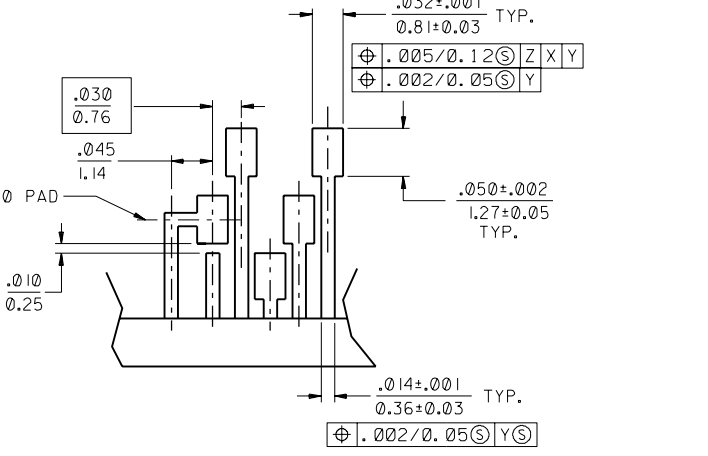
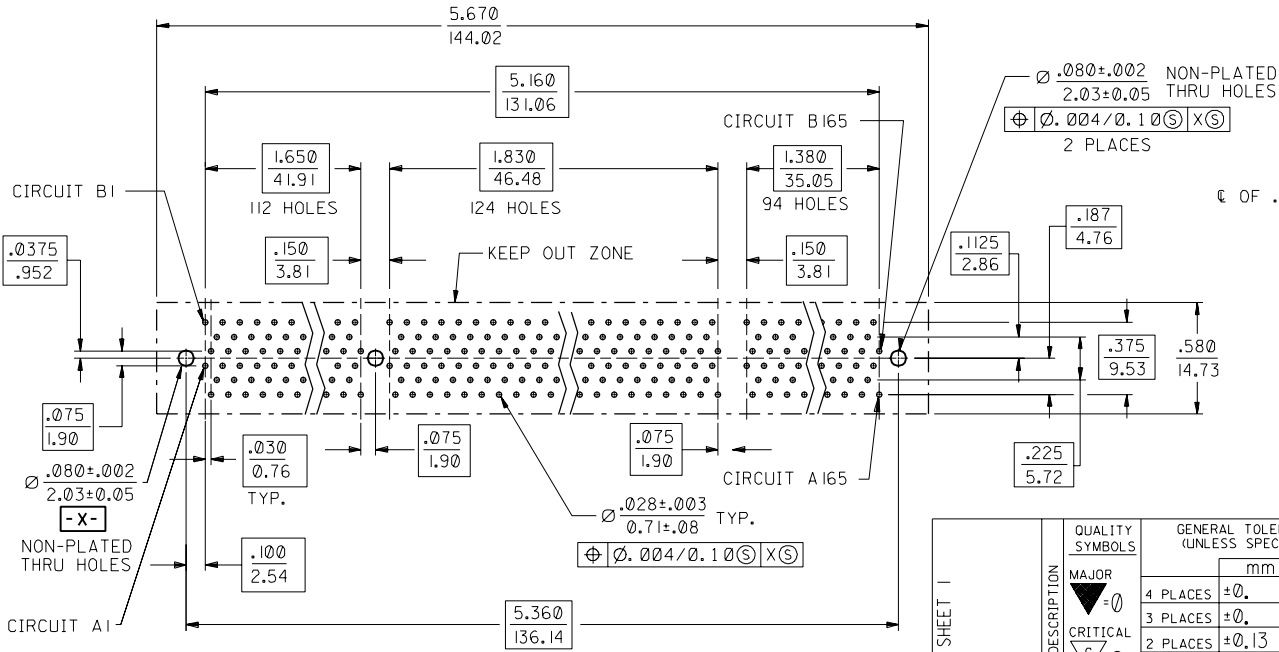
QUALITY SYMBOLS	GENERAL TOLERANCES: (UNLESS SPECIFIED)
MAJOR ▽=0	mm INCH
CRITICAL ▽C=0	4 PLACES ±0. ±.
	3 PLACES ±0. ±.005
	2 PLACES ±0.13 ±.
	1 PLACE ±0. ±.
	ANGULAR: ± 1°
DRAFT WHERE APPLICABLE MUST REMAIN WITHIN DIMENSIONS	

SCALE 2:1	DESIGN UNITS <input type="checkbox"/> mm <input checked="" type="checkbox"/> INCH
DRAWN BY & DATE NELSON 06/20/97	
CHECKED BY & DATE NELSON 06/20/97	
APPROVED BY & DATE FUNCK 06/20/97	
CAD FILENAME S7110966.S01	

DIMENSIONS: <input type="checkbox"/> mm <input checked="" type="checkbox"/> INCH <input type="checkbox"/> mm ONLY		2 F
THIRD ANGLE PROJECTION		I H
TITLE: SALES ASSEMBLY SC330 "HiSpec" CONNECTOR W/PLASTIC PEGS		SHT REV
MATERIAL NO. SEE TABLE		REVISE ON CAD ONLY
DRAWING NO. SD-71109-203		
MOLEX INCORPORATED		
SHEET NO. 1 OF 2		
THIS DRAWING CONTAINS INFORMATION THAT IS PROPRIETARY TO MOLEX INCORPORATED AND SHOULD NOT BE USED WITHOUT WRITTEN PERMISSION.		SIZE C



RECOMMENDED MODULE BOARD LAYOUT



DETAIL Z

SEE SHEET 1	QUALITY SYMBOLS	GENERAL TOLERANCES: (UNLESS SPECIFIED)		SCALE 2:1	DESIGN UNITS	THIRD ANGLE PROJECTION	DIMENSIONS:		SHT	REV
		mm	INCH	mm	INCH		mm	INCH	mm	ONLY
EC NO. F	DESCRIPTION	MAJOR	4 PLACES ±0.	±.	DRAWN BY & DATE	TITLE:	SALES ASSEMBLY SC330 "HiSpec" CONNECTOR W/PLASTIC PEGS			
		CRITICAL	3 PLACES ±0.	±.005	NELSON 06/20/97					
REV			2 PLACES ±0.13	±.	CHECKED BY & DATE	MATERIAL NO. SEE TABLE	DRAWING NO. SD-71109-203	SHEET NO. 2	MOLEX INCORPORATED	
			1 PLACE ±0.	±.	APPROVED BY & DATE					
			ANGULAR: ± 1°		FUNCCK 06/20/97	CAD FILENAME S7110966.S02		DRAWING NO. SD-71109-203		SIZE C
		DRAFT WHERE APPLICABLE MUST REMAIN WITHIN DIMENSIONS		THIS DRAWING CONTAINS INFORMATION THAT IS PROPRIETARY TO MOLEX INCORPORATED AND SHOULD NOT BE USED WITHOUT WRITTEN PERMISSION.						