

NOTES:

- MATERIAL:  
HOUSING -LIQUID CRYSTAL POLYMER (LCP),  
GLASS-FILLED, UL 94V-0, COLOR BLACK.  
SIGNAL PIN & SHIELD -HIGH PERFORMANCE COPPER ALLOY.
- FINISHES:  
CONTACT AREA: SELECTIVE GOLD (Au)  
PCB TAILS: SELECTIVE MATTE TIN (Sn)  
NICKEL (Ni) OVERALL.
- THIS PART CONFORMS TO MOLEX PRODUCT SPECIFICATION PS-74031-999.
- FOR MIXED CONTACT MATING LENGTHS CONSULT MOLEX FOR AVAILABILITY.
- FOR SPECIFIC PART NUMBERS AND MATING INFORMATION REFER TO SHEET 2.
- PACKAGE PER PK-74060-003.
- EITHER MARK PART NUMBER AND DATE CODE APPROXIMATELY WHERE SHOWN OR PLACE LABEL ON THE TUBE.
- MAPS (MOLEX ADVANCED PLATING SYSTEM).

<b>UPDATE TABLE</b> EC NO: UCP2014-3396 TIDRWINSVANG01 2014/02/14 CHKD:MMOLFE 2014/02/14 APPR:SMILLER 2014/02/25 REV	QUALITY SYMBOLS	GENERAL TOLERANCES (UNLESS SPECIFIED)	DIMENSION STYLE <b>MM ONLY</b>	SCALE <b>2.5:1</b>	DESIGN UNITS <b>METRIC</b>	THIRD ANGLE PROJECTION
	▽=0	mm INCH	DRAWN BY DATE	TITLE	<b>HSD SALES ASSEMBLY</b> <b>8 ROW OPEN END</b> <b>BACKPLANE</b> 	
	▽=0	4 PLACES ± --- ± ---	MOWANG 2001/01/22	CHECKED BY DATE		
	▽=0	3 PLACES ± --- ± ---	JLAURX 2001/01/23	APPROVED BY DATE		
▽=0	2 PLACES ± 0.25 ± ---	CBIXLER 2001/01/24	MATERIAL NO. DOCUMENT NO.			
		1 PLACE ± 0.38 ± ---	<b>SEE SHEET 2</b>		SD-74649-002	SHEET NO. 1 OF 2
		0 PLACE ± ±	DRAFT WHERE APPLICABLE MUST REMAIN WITHIN DIMENSIONS		THIS DRAWING CONTAINS INFORMATION THAT IS PROPRIETARY TO MOLEX. INCORPORATED AND SHOULD NOT BE USED WITHOUT WRITTEN PERMISSION	

MATERIAL NUMBER ASSIGNMENT

74649-\*\*0\*

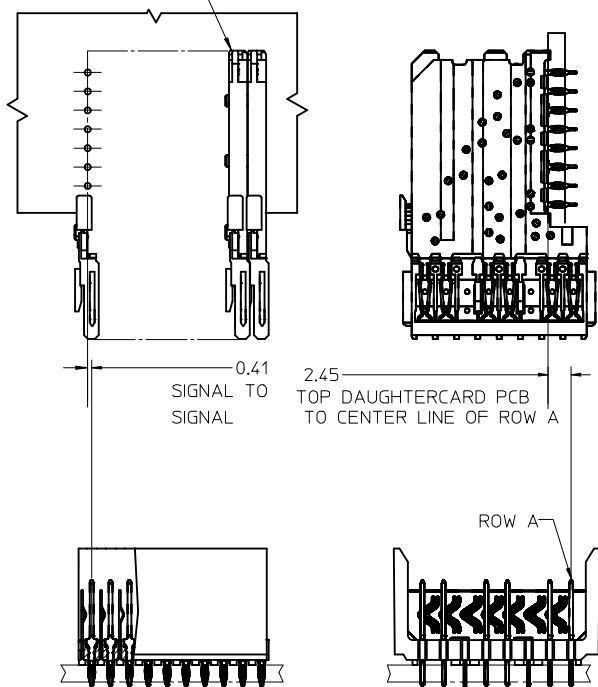
- 10 = 10 COLUMN MATTE TIN (FORMERLY TIN/LEAD)
- 25 = 25 COLUMN MATTE TIN (FORMERLY TIN/LEAD)
- 60 = 10 COLUMN MATTE TIN (MAPS)
- 75 = 25 COLUMN MATTE TIN (MAPS)
- 90 = 10 COLUMN MATTE TIN
- 85 = 25 COLUMN MATTE TIN

PIN HEIGHT / PLATING

- 1-4 = 0.25 or 0.76 GOLD
- 6-9 = 1.27 GOLD

- 1 & 6 = 4.75
- 2 & 7 = 6.25
- 3 & 8 = 4.25
- 4 & 9 = 5.15

DAUGHTERCARD  
CONNECTOR SIDE



PART NUMBER	COLUMN	NUMBER OF SIGNAL PIN	NUMBER OF SHIELD	A	B	M	GOLD THICKNESS MICROMETER	TIN THICKNESS MICROMETER
74649-6001	10	60	10	20.00	18.00	4.75	0.25 MAPS	0.76-1.52
74649-*001							0.76	
74649-*006							1.27	
74649-7501	25	150	25	50.00	48.00	6.25	0.25 MAPS	
74649-*501							0.76	
74649-*506							1.27	
74649-6002	10	60	10	20.00	18.00	4.25	0.25 MAPS	
74649-*002							0.76	
74649-*007							1.27	
74649-7502	25	150	25	50.00	48.00	5.15	0.25 MAPS	
74649-*502							0.76	
74649-*507							1.27	
74649-6003	10	60	10	20.00	18.00	4.75	0.25 MAPS	
74649-*003							0.76	
74649-*008							1.27	
74649-7503	25	150	25	50.00	48.00	6.25	0.25 MAPS	
74649-*503							0.76	
74649-*508							1.27	
74649-6004	10	60	10	20.00	18.00	4.25	0.25 MAPS	
74649-*004							0.76	
74649-*009							1.27	
74649-7504	25	150	25	50.00	48.00	5.15	0.25 MAPS	
74649-*504							0.76	
74649-*509							1.27	

SEE SHEET 1 EC NO: UCP2014-3396 DRWNS:YANG01 2014/02/14 CHKD:MOLLE 2014/02/14 APPR:SMILLER 2014/02/25	QUALITY SYMBOLS ▽=0 ▽=0 ▽=0	GENERAL TOLERANCES (UNLESS SPECIFIED) mm INCH 4 PLACES ± --- ± --- 3 PLACES ± --- ± --- 2 PLACES ± 0.25 ± --- 1 PLACE ± 0.38 ± --- 0 PLACE ± ± ANGULAR ±1/2° DRAFT WHERE APPLICABLE MUST REMAIN WITHIN DIMENSIONS	DIMENSION STYLE MM ONLY DRAWN BY DATE MQWANG 2001/01/22 CHECKED BY DATE JLAURX 2001/01/23 APPROVED BY DATE CBIXLER 2001/01/24	SCALE 2.5:1 DESIGN UNITS METRIC THIRD ANGLE PROJECTION	HSD SALES ASSEMBLY 8 ROW OPEN END BACKPLANE <b>molex</b> DOCUMENT NO. SD-74649-002	SHEET NO. 2 OF 2	
							MATERIAL NO. SEE TABLE
							THIS DRAWING CONTAINS INFORMATION THAT IS PROPRIETARY TO MOLEX INCORPORATED AND SHOULD NOT BE USED WITHOUT WRITTEN PERMISSION
							SIZE C