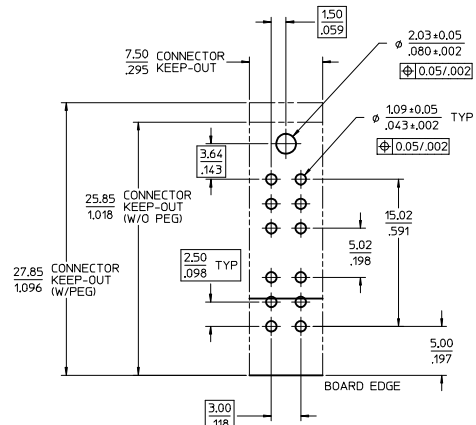
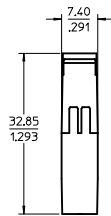
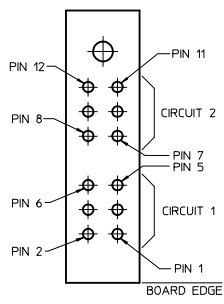


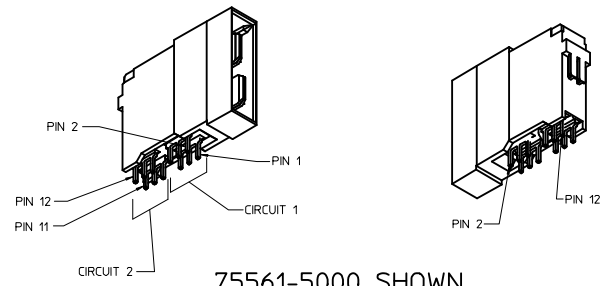
PART NUMBER	DESCRIPTION	DIM "A" PC TAIL LENGTH	PLATING
75561-5000	SHORT PC TAIL - NO PEG	3.07/1.121	
75561-5001	LONG PC TAIL - NO PEG	3.81/1.150	
75561-1500	SHORT PC TAIL - PEG	3.07/1.121	30μ INCH MIN SELECT HARD GOLD IN CONTACT AREA WITH 100μ INCH MIN SELECT TIN IN TAIL AREA OVE
75561-1501	LONG PC TAIL - PEG	3.81/1.150	



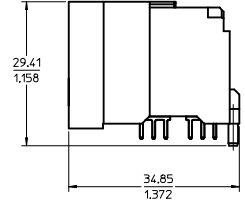
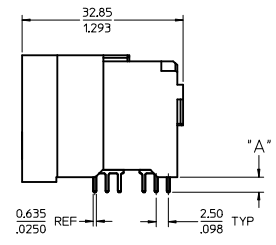
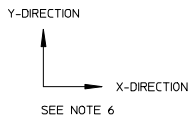
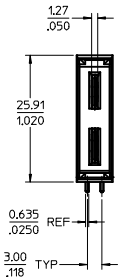
PCB LAYOUT  
SCALE: 4:1



PINOUT DETAIL  
SCALE: 4:1

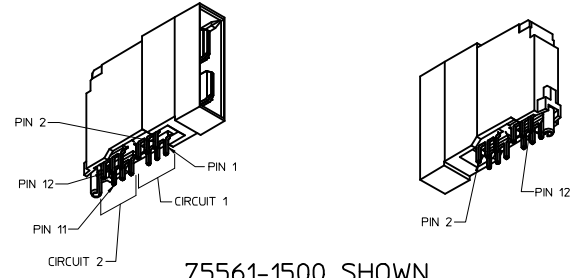


75561-5000 SHOWN  
(W/O PEG)



SAME AS 75561-500\*  
EXCEPT AS SHOWN

75561-500\* SHOWN  
(W/O PEG)



75561-1500 SHOWN  
(W/PEG)

<b>CORRECT HSG W/PEG GRAPHICS</b> IEC NO: UCP2015-2716 DRAWN: OUILLES 2015/01/08 CHKD: BHANDIRA 2015/01/08 APPR: APATEL 2015/01/14 REV:	QUALITY SYMBOLS	GENERAL TOLERANCES (UNLESS SPECIFIED)	DIMENSION STYLE	SCALE	DESIGN UNITS	THIRD ANGLE PROJECTION
		mm INCH	MM/IN	2:1	METRIC	
	4 PLACES ± --- ± --- 3 PLACES ± --- ± .008 2 PLACES ± 0.20 ± .013 1 PLACE ± 0.33 ± --- ANGULAR ± 1/2°	DRAWN BY: AD RATNOL CHECKED BY: M DATA APPROVED BY: APATEL DATE: 2015/04/19 DATE: 2015/04/19 DATE: 2010/10/18	TITLE	<b>POWERMASS 80 AMP MODULE, PLUG</b>		<b>MOLEX INCORPORATED</b>
	DRAFT WHERE APPLICABLE MUST REMAIN WITHIN DIMENSIONS	MATERIAL NO: <b>SEE CHART</b>	DOCUMENT NO: <b>SD-75561-100</b>	SHEET NO.	1 OF 1	