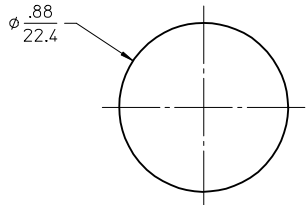
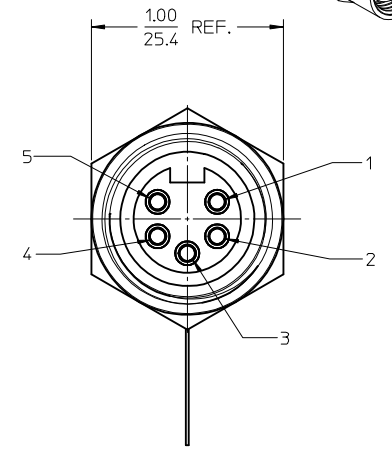
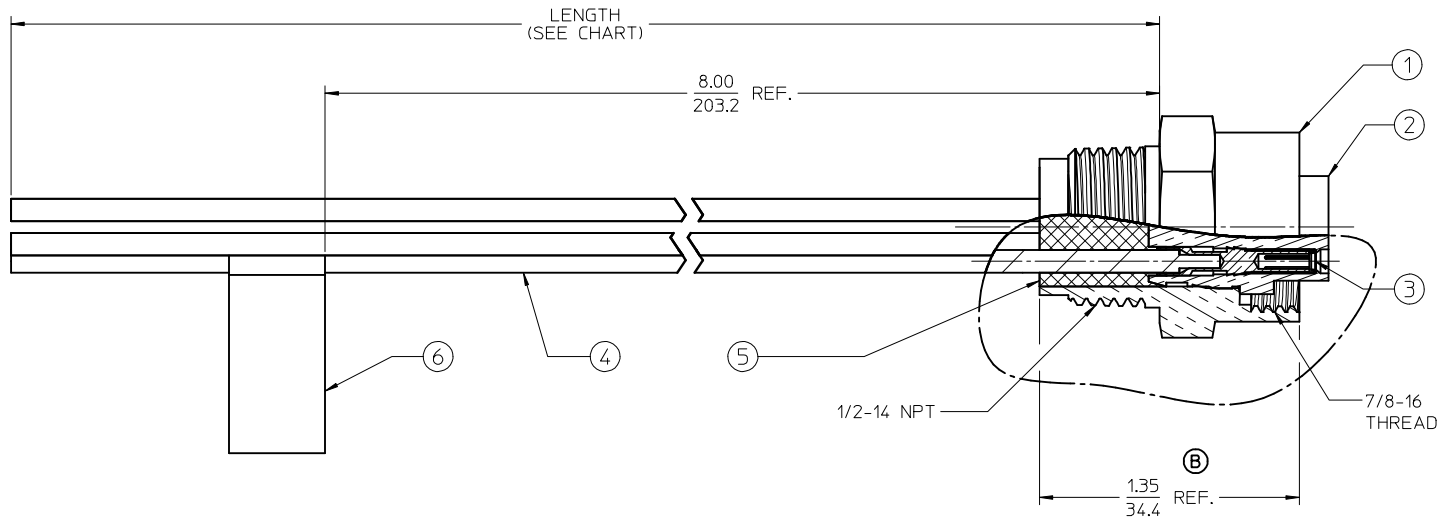
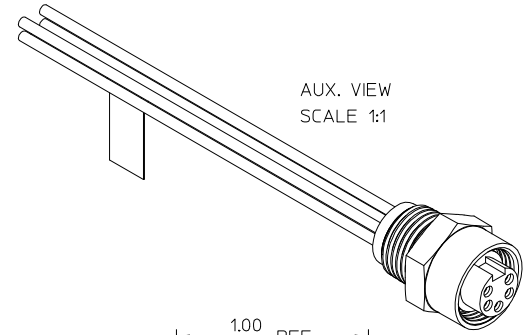


MATERIAL NO.	ENGINEERING NO.	LENGTH
1300130417	1R5000A20A120	12.0" +.75 -0 (0.3M + 19.1mm -0)
1300130421	1R5000A20F030	3' 0" +1.75 -0 (0.9M + 44.5mm -0)
1300130423	1R5000A20F060	6' 0" +2.19 -0 (1.8M + 55.6mm -0)
1300130426	1R5000A20M020	6' 7" +3.50 -0 (2.0M + 88.9mm -0)



KNOCKOUT HOLE

WIRE COLOR	POSITION
WHITE	1
RED	2
GREEN/YELLOW	3
ORANGE	4
BLACK	5

WIRE DIAGRAM

- NOTES:
1. MATERIAL: SEE TABLE
 2. FINISHES: SEE TABLE
 3. MATES WITH: 5C MINI CHANGE CABLE
 4. ELECTRICAL SPECIFICATIONS:
VOLTAGE RATING: 600V AC/DC
CURRENT RATING: 8.0 AMPS
 5. ASSEMBLY IS RoHS COMPLIANT

ITEM	QTY.	DESCRIPTION	MATERIAL	FINISH
6	1	LABEL	VINYL (B)	BLACK/YELLOW
5	1	POTTING MATERIAL	EPOXY	
4	5	WIRE, 16 AWG	PVC INSULATION	SEE WIRE DIAGRAM
3	5	CONTACT SOCKET & SLEEVE ASSY.	Cu ALLOY/ST.STEEL	GOLD PLATED
2	1	INSERT	PVC	YELLOW
1	1	RECEPTACLE SHELL	DIE-CAST ZINC (B)	NICKEL PLATED (B)

ADD P/NS.	REV'D PER BOM	DESCRIPTION
EC NO: IPGZ2013-1710	2013/05/06	DRWINRSTONE
CHKDK: JOZWIK	2013/05/08	
APPR: BWOODMAN	2013/05/15	

QUALITY SYMBOLS	GENERAL TOLERANCES (UNLESS SPECIFIED)
▽=0	mm INCH
▽=0	4 PLACES ± --- ± ---
	3 PLACES ± --- ± ---
	2 PLACES ± --- ± .01
	1 PLACE ± 0.3 ± ---
	ANGULAR ± 1/2°

DIMENSION STYLE	SCALE	DESIGN UNITS	THIRD ANGLE PROJECTION
IN/MM	2:1	INCH	THIRD ANGLE PROJECTION

TITLE	MATERIAL NO.	DOCUMENT NO.	SHEET NO.
MINI-CHANGE, RECEPTACLE 5P, FEMALE, 16 AWG	SEE CHART	SD-130013-087	1 OF 1

THIS DRAWING CONTAINS INFORMATION THAT IS PROPRIETARY TO MOLEX INCORPORATED AND SHOULD NOT BE USED WITHOUT WRITTEN PERMISSION