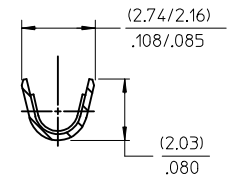
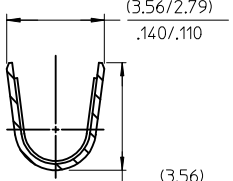


| PART NO. | ENG. NO. |
|------------|---------------|
| 02-06-1101 | 1561-(P901) |
| 02-06-1103 | 1561-(P901)L |
| 02-06-5101 | 1561-(P561) |
| 02-06-5102 | 1561-(P561)L |
| 02-06-5108 | 1561-(P228) |
| 02-06-5109 | 1561-(P228)L |
| 02-06-5100 | 1561-(P550) |
| 02-06-5103 | 1561-(P550)L |
| 02-06-5105 | 1561-(P591) |
| 02-06-5104 | 1561-(P591)L |
| 02-06-1118 | 1561-1(P901) |
| NOT TOOLED | 1561-1(P901)L |



SECT. "B-B"
SCALE:10X



SECT. "C-C"
SCALE:10X

LEGEND

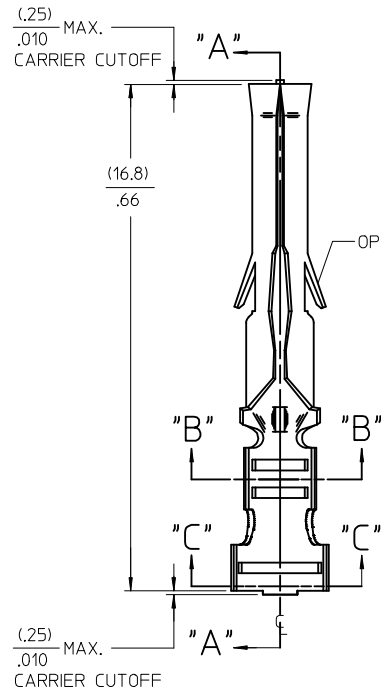
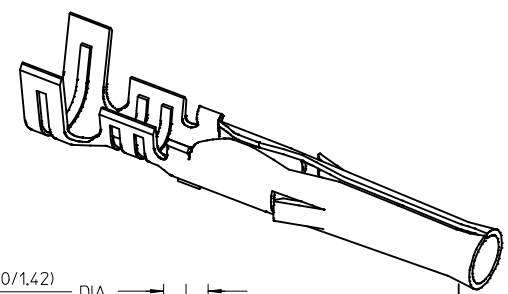
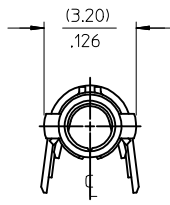
1561-*(****)*

BLANK=WITH LOCKING TABS
1=WITHOUT LOCKING TABS

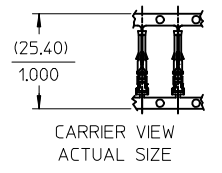
P=PREPLATE
BLANK=POSTPLATE

FORM
BLANK=CHAIN
L=LOOSE

FINISH CODE



SECT. "A-A"



- NOTES:
- MATERIAL: BRASS
 - FINISH:
 - 901 HOT TIN DIP (.00051)/.000020 MIN.
 - 228 SELECT GOLD PLATE (.00075)/.000030 MIN. IN CONTACT AREA, SELECT TIN, (.00250)/.000100 MIN. IN CRIMP AREA OVER (.00125)/.000050 MIN. NICKEL OVERALL.
 - 561 SELECT GOLD PLATE (.00076)/.000030 MIN. IN CONTACT AREA, OVER (.00127)/.000050 MIN. NICKEL OVERALL.
 - 591 SELECT GOLD PLATE (.00175)/.000050 MIN. IN CONTACT AREA, OVER (.00127)/.000050 MIN. NICKEL OVERALL WITH (.000025)/.000010 MAX. GOLD FLASH OVERALL.
 - 550 SELECT GOLD PLATE (.00038)/.000015 MIN. IN CONTACT AREA, OVER (.00076)/.000030 MIN. NICKEL OVERALL WITH (.000025)/.000010 MAX. GOLD FLASH OVERALL.
 - PRODUCT SPECIFICATION: PS-02-06.
 - PACKAGING INFORMATION: NOT AVAILABLE
 - TERMINAL FOR USE WITH (1.57)/.062 DIA. SERIES HOUSINGS AND WILL ACCEPT 18 THRU 24 AWG WIRE WITH (1.52/3.05)/.060/.120 INSULATION DIA.
 - PARTS CONFORM TO CLASS B REQUIREMENTS OF COSMETIC SPECIFICATION PS-45499-002.

| | | | | | | | | | | |
|---|--------------------------------------|--|-----------------------|---------------------------|---|--------------------|--|------------------------|---------------------------|--|
| CORRECT TOLERANCE EC NO: UCP2015-0937 DRAWN:KIPPER 2014/09/02 CHKD:NGUYEN 2014/09/02 APPR:FSMLTH 2014/09/04 | QUALITY SYMBOLS ▽=0 ▽=0 ▽=0 | GENERAL TOLERANCES (UNLESS SPECIFIED) | | DIMENSION STYLE MM/IN | | SCALE 6:1 | DESIGN UNITS INCH | THIRD ANGLE PROJECTION | | |
| | | | mm | INCH | DRAWN BY GEW | DATE 1991/02/19 | TITLE CRIMP TERMINAL, FEMALE .062 DIA. FOR 18-24 AWG WIRE | | | |
| | | 4 PLACES ± --- ± --- | 3 PLACES ± --- ± .010 | 2 PLACES ± 0.25 ± .014 | 1 PLACE ± 0.36 ± --- | 0 PLACE ± ± | | | | |
| | | ANGULAR ±1/2° | | MATERIAL NO. SEE CHART | | APPROVED BY GWF | | DATE 1991/02/19 | DOCUMENT NO. SD-1561-* | |
| AP1 | REV | DRAFT WHERE APPLICABLE MUST REMAIN WITHIN DIMENSIONS | | SIZE C | THIS DRAWING CONTAINS INFORMATION THAT IS PROPRIETARY TO MOLEX INCORPORATED AND SHOULD NOT BE USED WITHOUT WRITTEN PERMISSION | | | | SHEET NO. 1 OF 1 | |