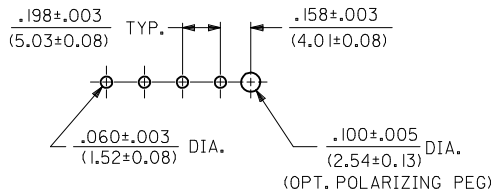
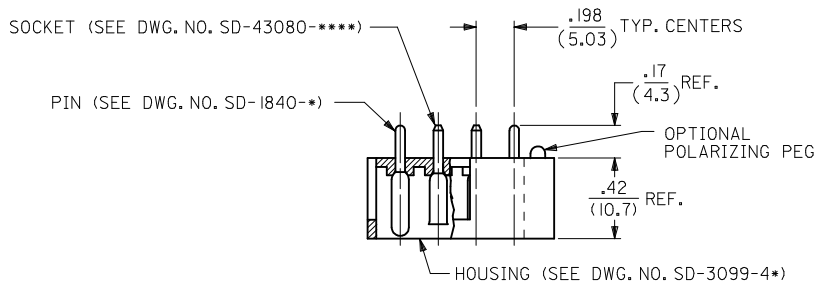


PART NO..	ENG. NUMBER	TERMINAL LOCATION (SEE CHART)	MAT'L	POLAR. PEG	PLATING (SEE CHART)
10-18-1041	A-3099-P4	A	V-0	YES	B
10-18-1042	A-3099-P4A	B	V-0	YES	B
10-18-1043	A-3099-P4B	C	V-0	YES	B
10-18-1044	A-3099-P4C	D	V-0	YES	B
10-18-1045	A-3099-P4D	E	V-0	YES	B
10-18-1046	A-3099-P4E	F	V-0	YES	B
10-18-1047	A-3099-P4F	G	V-0	YES	B
10-18-1048	A-3099-P4H	H	V-0	YES	B
10-18-1049	A-3099-P4J	I	V-0	YES	B
10-18-1050	A-3099-P4K	J	V-0	YES	B
10-18-1040	A-3099-P4M	K	V-0	YES	B
38-00-1390	A-3099-P4N	L	V-0	YES	B

TERMINAL LOCATION CHART (M=MALE, F=FEMALE, B=BLANK)				
TERMINAL LOCATION CODE	CIRCUIT NO.			
	1	2	3	4
A	M	M	M	M
B	F	F	F	F
C	F	M	M	M
D	M	F	F	F
E	M	M	F	F
F	M	M	M	F
G	M	F	M	M
H	M	M	F	M
I	M	F	M	F
J	F	F	M	M
K	F	M	B	B
L	M	B	M	M

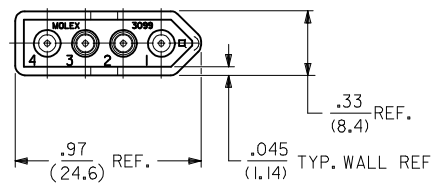
PLATING CODE	PLATING
A	UNPLATED
B	PINS ONLY: OVERALL TIN: .00200/(0.00508) MIN. OVER COPPER: .000100/(0.00254) MIN.
	SOCKETS ONLY: OVERALL TIN: .000050/(0.00127) MIN. OVER NICKEL: .000050/(0.00127) MIN.



RECOMMENDED P.C. BOARD HOLE LAYOUT

SCALE: 2X

- MATERIAL:
HOUSING: UNFILLED POLYESTER, 94V-0, COLOR-BLACK
PIN TERMINAL: CARTRIDGE BRASS
SOCKET TERMINAL: PHOSPHOR BRONZE
- FINISH: SEE TABLE
- PRODUCT SPECIFICATION: N/A
- PACKAGING SPECIFICATION: PK-3099-002
- MATES WITH MOLEX 1490 RECEPTACLES AND .093/(2.36) SERIES TERMINALS
- ASSEMBLIES TO BE MOUNTED ON SUPPORTED EDGE OF P.C. BOARD



ADD PKG SPECS EC NO: UCP2013-4695 DRW: NALHAG 2013/04/30 CHKD: JEBEL 2013/04/30 APPR: FSMITH 2013/05/13 DESCRIPTION	QUALITY SYMBOLS	GENERAL TOLERANCES (UNLESS SPECIFIED)	DIMENSION STYLE		SCALE	DESIGN UNITS	THIRD ANGLE PROJECTION	
	$\nabla=0$ $\nabla=0$		IN/MM	DATE	2:1	INCH		
			mm	DRAWN BY	DATE	CONNECTOR ASSEMBLY ENCLOSED WAFER 4 CIRCUIT		
			INCH	GEP	1989/05/25			
		4 PLACES ± --- ± ---	CHECKED BY	DATE	MOLEX INCORPORATED			
		3 PLACES ± --- ± .010	RW	1989/05/25				
		2 PLACES ± 0.25 ± .014	APPROVED BY	DATE	DOCUMENT NO. SDA-3099-4** SHEET NO. 1 OF 1			
		1 PLACE ± 0.35 ± ---	RAS	1989/05/25				
		ANGULAR ± 1/2°	MATERIAL NO. SEE CHART		THIS DRAWING CONTAINS INFORMATION THAT IS PROPRIETARY TO MOLEX INCORPORATED AND SHOULD NOT BE USED WITHOUT WRITTEN PERMISSION			
		DRAFT WHERE APPLICABLE MUST REMAIN WITHIN DIMENSIONS	SIZE C					