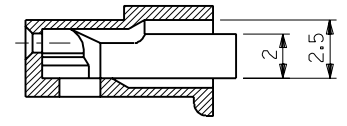
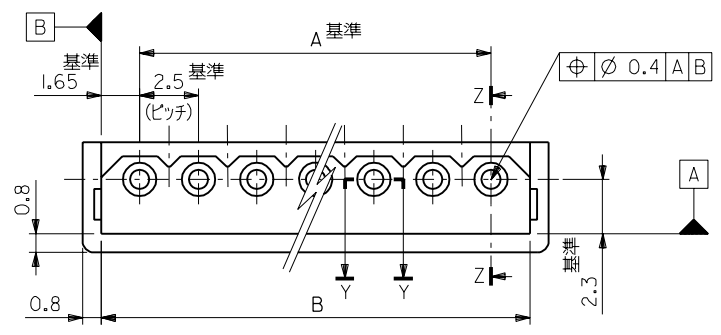
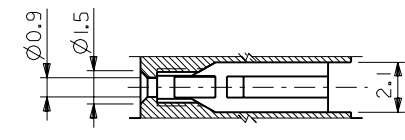


EDP NO. 50-37-5**3
 ENG. NO. SD-5264-N

MM DIMENSIONS IN METRIC DO NOT SCALE DRAWING

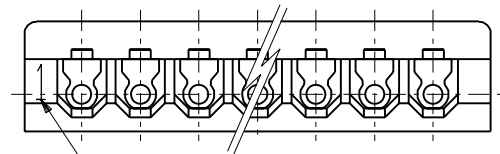
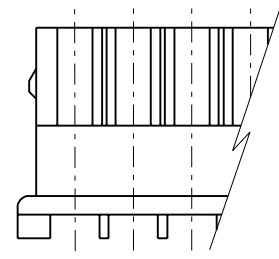
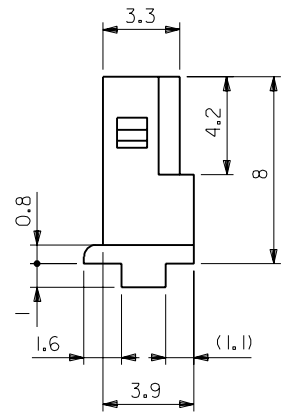
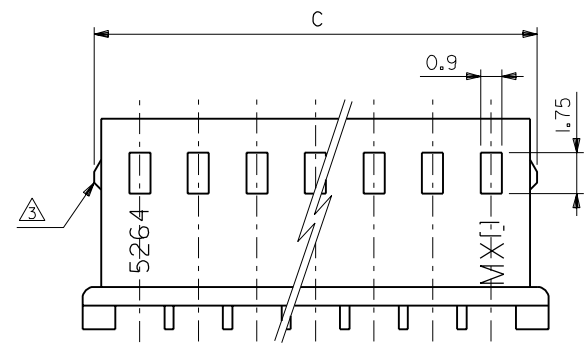


断面 Z-Z



断面 Y-Y

注記:
 1. 適合端子: 5263PBT
 2. 嵌合相手: 5267 シリーズ, 5268 シリーズ
 3. 9極以上はロックなし。



CIRCUIT NO.

	38.3	35	50-37-5153	5264-15	15	
	35.8	32.5	-5143	-14	14	
	33.3	30	-5133	-13	13	
	30.8	27.5	-5123	-12	12	
	28.3	25	-5113	-11	11	
	25.8	22.5	-5103	-10	10	
	23.3	20	-5093	-09	9	
	21.4	20.8	17.5	-5083	-08	8
	18.9	18.3	15	-5073	-07	7
	16.4	15.8	12.5	-5063	-06	6
	13.9	13.3	10	-5053	-05	5
	11.4	10.8	7.5	-5043	-04	4
	8.9	8.3	5	-5033	-03	3
	6.4	5.8	2.5	50-37-5023	5264-02	2
C	B	A	EDP NO.	ENG. NO.	極数	

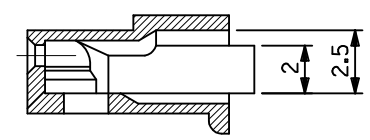
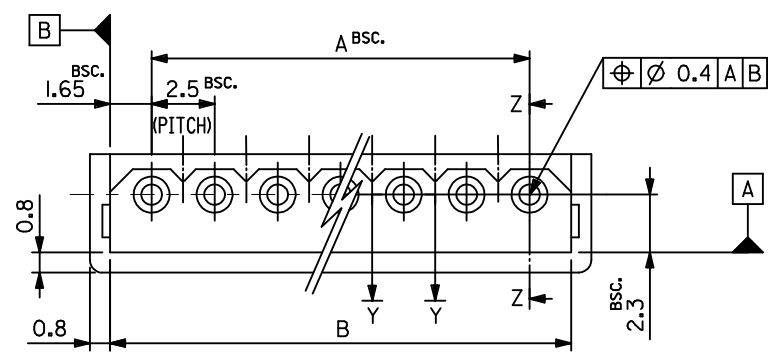
角度 ANGLE	±3°				
30以上 OVER	+0.3				
10以上 30未滿 UNDER	+0.25	H	再作図及び変更	U10590	K.J
10未滿 UNDER	+0.2	記号 LTR	変更内容	DR. DATE	9/17/26
一般公差 GENERAL TOLERANCES		REVISE ONLY ON CAD SYSTEM			

材料 MATERIAL	66ナイロン UL94V-0	MOLEX JAPAN CO., LTD. 日本モレックス株式会社
仕上げ FINISH	—	
適用電線範囲 WIRE RANGE	—	EDP. NO. 50-37-5**3
被覆外径 INS. RANGE	—	ENG. NO. SD-5264-N
DRAWN BY K.TOJO '91/7/26	CHK'D BY '91/07/30 M.FUKUSHIMA	TITLE 名称 2.5 LOW PROFILE RECEPTACLE HOUSING
APP'D BY '91/07/30 M.ENOMOTO	尺 度 SCALE 5-1	REV H

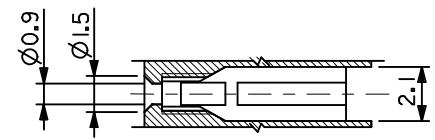
THIS DRAWING CONTAINS INFORMATION THAT IS PROPRIETARY TO MOLEX(JAPAN) AND SHOULD NOT BE USED WITHOUT WRITTEN PERMISSION
 本図面は日本モレックス(株)の所有する情報を含むもので 当社の許可なく複製を禁止する。

MXJ-8

5264-530

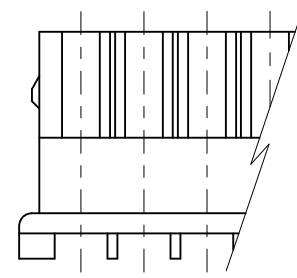
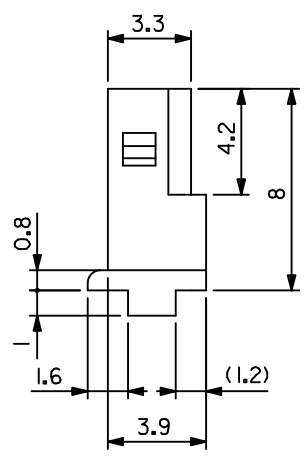
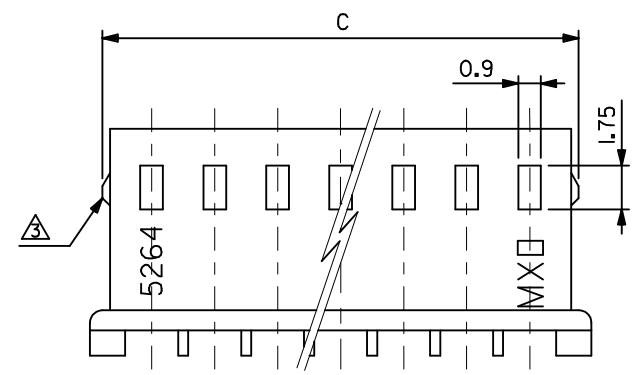


SECT.Z-Z



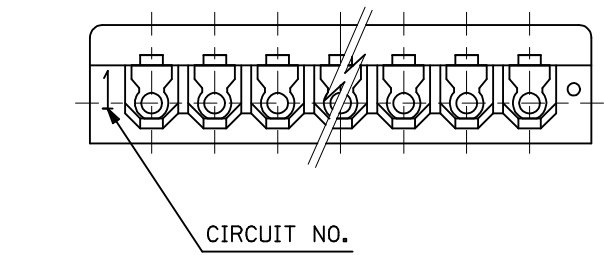
SECT.Y-Y

NOTES:
1. SUITABLE TERMINAL : 5263SERIES
2. MATES WITH : 5267SERIES,5268SERIES
△ 9 CIRCUITS OR MORE WITHOUT LOOK.



	48.3	45	50-37-5193	5264-19	19	
	43.3	40	-5173	-17	17	
	38.3	35	-5153	-15	15	
	35.8	32.5	-5143	-14	14	
	33.3	30	-5133	-13	13	
	30.8	27.5	-5123	-12	12	
	28.3	25	-5113	-11	11	
	25.8	22.5	-5103	-10	10	
	23.3	20	-5093	-09	9	
	21.4	20.8	17.5	-5083	-08	8
	18.9	18.3	15	-5073	-07	7
	16.4	15.8	12.5	-5063	-06	6
	13.9	13.3	10	-5053	-05	5
	11.4	10.8	7.5	-5043	-04	4
	8.9	8.3	5	-5033	-03	3
	6.4	5.8	2.5	50-37-5023	5264-02	2
	C	B	A	EDP NO.	ENG.NO.	CKT.

MATERIAL:
66 NYLON, UL94V-0



PART NUMBERS VOIDED EC NO: J2016-1314 DRWNGES 2016/06/29 CHKD: APPR: Y01TO 2016/07/08	GENERAL TOLERANCES (UNLESS SPECIFIED)		DIMENSION STYLE MM ONLY		SCALE 5:1	DESIGN UNITS METRIC	THIRD ANGLE PROJECTION
	0.25 UNDER	±0.03	DRAWN BY K.TOJO	DATE 1991/11/05	TITLE 2.5 LOW PROFILE RECEPTACLE HOUSING molex DOCUMENT NO. SD-5264-N SHEET NO. 1 OF 1		
	0.25 OVER 0.5 UNDER	±0.05	CHECKED BY M.FUKUSHIMA	DATE 1992/01/15			
	0.5 OVER 1.0 UNDER	±0.1	APPROVED BY M.ENOMOTO	DATE 1992/01/15			
	1.0 OVER 10 UNDER	±0.3	MATERIAL NO.				
10 OVER 30 UNDER	±0.25						
30 OVER	±0.2	SEE CHART					
ANGULAR ±3 °		DRAFT WHERE APPLICABLE MUST REMAIN WITHIN DIMENSIONS		SIZE A3	THIS DRAWING CONTAINS INFORMATION THAT IS PROPRIETARY TO MOLEX ELECTRONIC TECHNOLOGIES, LLC AND SHOULD NOT BE USED WITHOUT WRITTEN PERMISSION		