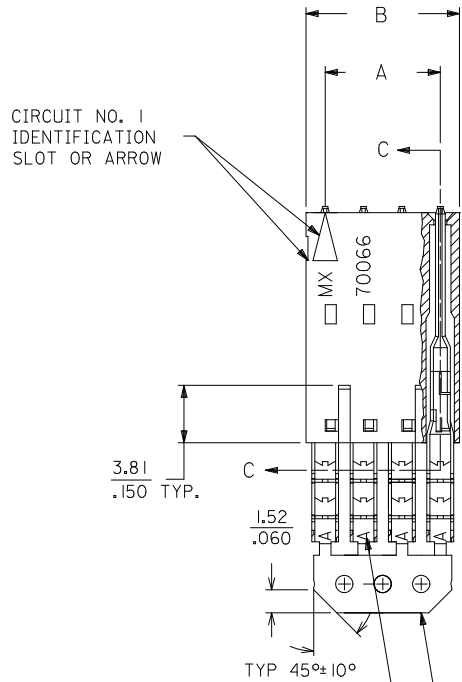
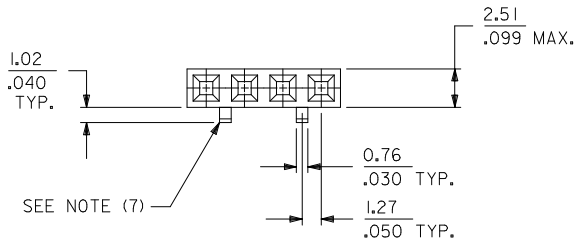


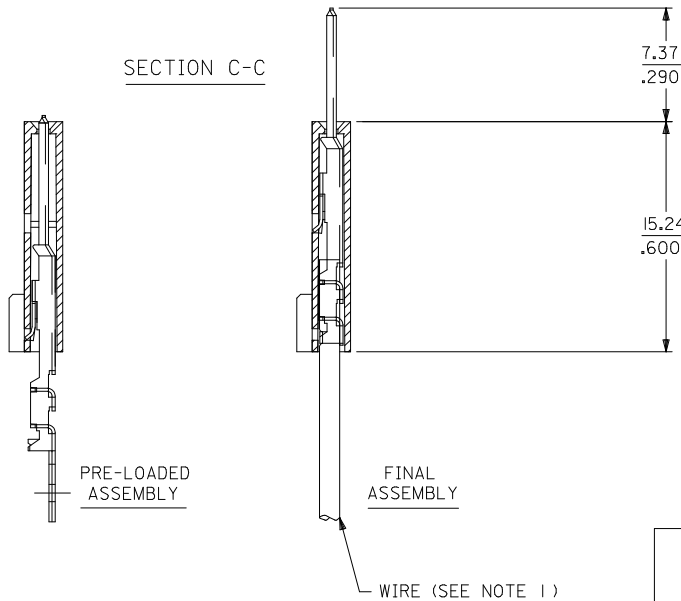
OPTION D

NOTES:

- MATERIAL: HOUSING - G.F. POLYESTER, 94V-0
TERMINAL - PHOSPHOR BRONZE
- FINISH: 0.38MICROMETERS/15 MICROINCHES MINIMUM
GOLD IN MATING AREA WITH 1.88 MICROMETERS/75
MICROINCHES MINIMUM TIN IN IDT AREA OVER NICKEL
UNDERPLATE OVER-ALL.
- PRODUCT SPECIFICATION: PS-70400
- TO BE USED WITH 24 AWG. STANDARD WIRE WITH
1.35/.053 DIAMETER MAXIMUM INSULATION.
- SEE CHART FOR CIRCUIT SIZES.
- STANDARD PACKAGING PER PK-70873-0001. OPTIONAL
PACKAGING MAY BE AVAILABLE. REQUEST DRAWING
PK-70475.
- PARTS STACKABLE END TO END ON 2.54/.100 CENTERS
- SEE DRAWING SDA-70457-**** (SHEET 3) FOR OPTIONAL
HOUSING DETAILS.
- 4 CIRCUIT SHOWN. 3-25 CIRCUITS HAVE 2 RIBS.
- TO MATE WITH MOLEX PART NUMBERS: 70018-0000,
70022-****, 70104-****.
- 2 CIRCUIT ASSEMBLIES SUPPLIED AS GROUPED PAIRS.



SECTION C-C



CKT. SIZE	EDP NUMBER		
	A	B	
2	2.54 .100	5.05 .199	70475-1202
3	5.08 .200	7.59 .299	70475-1203
4	7.62 .300	10.13 .399	70475-1204
5	10.16 .400	12.67 .499	
6	12.70 .500	15.21 .599	70475-1206
7	15.24 .600	17.75 .699	70475-1207
8	17.78 .700	20.29 .799	70475-1208
9	20.32 .800	22.83 .899	70475-1209
10	22.86 .900	25.37 .999	70475-1210
11	25.54 1.000	27.91 1.099	
12	27.94 1.100	30.45 1.199	70475-1212
13	30.48 1.200	32.99 1.299	70475-1213
14	33.02 1.300	35.53 1.399	70475-1214
15	35.56 1.400	38.07 1.499	70475-1215
16	38.01 1.500	40.61 1.599	70475-1216
17	40.64 1.600	43.15 1.699	
18	43.18 1.700	45.69 1.799	70475-1218
19	45.72 1.800	48.23 1.899	70475-1219
20	48.26 1.900	50.77 1.999	70475-1220
21	50.80 2.000	53.31 2.099	
22	53.34 2.100	55.85 2.199	70475-1222
23	55.88 2.200	58.39 2.299	
24	58.42 2.300	60.93 2.399	70475-1224
25	60.96 2.400	63.47 2.499	70475-1225



I.D. SLOT CODE TO WIRE GAUGE CHART	
I.D. SLOT CODE	WIRE GAUGE
A	24 AWG.

PLATING CODE (STRIPE ON CARRIER STRIP)	
PLATING	COLOR
15 GOLD	YELLOW

ADD GEN TOLERANCES EC NO: UCP2011-3892 DRWINMS IBARRA 2011/06/27 CHK:DMORGAN APPR:SMILLER 2011/07/07 REV:	QUALITY SYMBOLS ▽=0 ▽=0 ▽=0	GENERAL TOLERANCES (UNLESS SPECIFIED) mm INCH 4 PLACES ± --- ± --- 3 PLACES ± --- ± .010 2 PLACES ± 0.25 ± .014 1 PLACE ± 0.35 ± --- ANGULAR ± 1/2°	DIMENSION STYLE MM/IN DRAWN BY DATE BSMART 08/15/2005 CHECKED BY DATE BARKER 08/15/2005 APPROVED BY DATE SMILLER 08/15/2005	SCALE 4:1 DESIGN UNITS INCH THIRD ANGLE PROJECTION	TITLE SALES ASSEMBLY SL CONNECTOR SINGLE ROW 2.54/.100 GRID MOLEX INCORPORATED SD-70475-001 SHEET NO. 1 OF 1	
		DRAFT WHERE APPLICABLE MUST REMAIN WITHIN DIMENSIONS		MATERIAL NO. SEE TABLE		DOCUMENT NO.
		THIS DRAWING CONTAINS INFORMATION THAT IS PROPRIETARY TO MOLEX INCORPORATED AND SHOULD NOT BE USED WITHOUT WRITTEN PERMISSION				