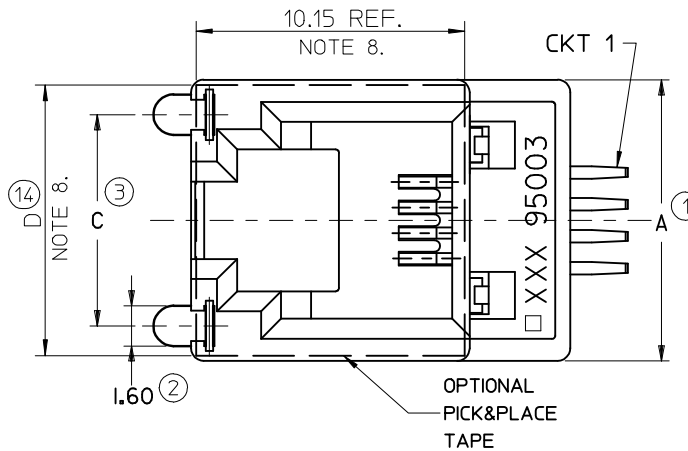
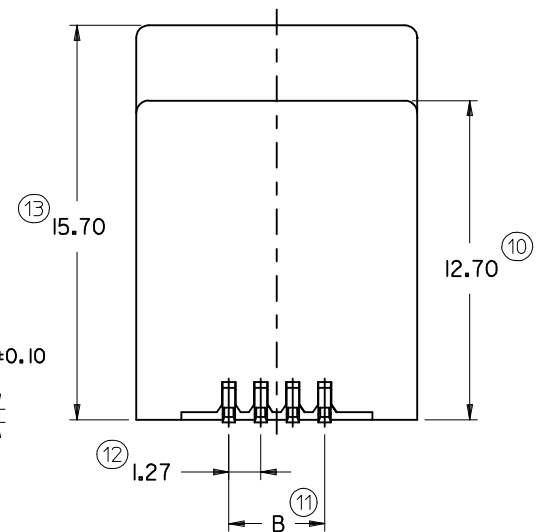
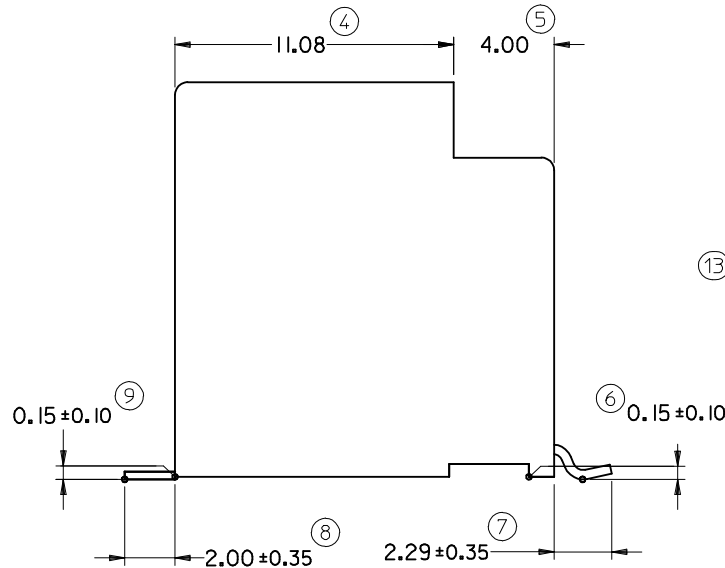


PART. NO.	HOUSING SIZE	LOADED CKTS	TOOLED	PACKAGING	PICK & PLACE TAPE	A	B ±0.15	C	D
85510-5020	8	8	YES	BLISTER ON REEL 13'	NO	15.24	8.89	10.77	14.40
85510-5120					YES				
85510-5028	8	8	YES	BLISTER ON REEL 22'	NO	13.21	6.35	9.95	12.40
85510-5128					YES				
85510-5019	6	6	YES	BLISTER ON REEL 13'	NO	13.21	3.81	9.95	12.40
85510-5119					YES				
85510-5027	6	6	YES	BLISTER ON REEL 22'	NO	13.21	3.81	9.95	12.40
85510-5127					YES				
85510-5018	6	4	NO	BLISTER ON REEL 13'	NO	11.18	3.81	8.40	10.40
85510-5118					YES				
85510-5026	6	4	YES	BLISTER ON REEL 22'	NO	11.18	3.81	8.40	10.40
85510-5126					YES				
85510-5017	4	4	YES	BLISTER ON REEL 13'	NO	11.18	3.81	8.40	10.40
85510-5117					YES				
85510-5025	4	4	YES	BLISTER ON REEL 22'	NO	11.18	3.81	8.40	10.40
85510-5125					YES				



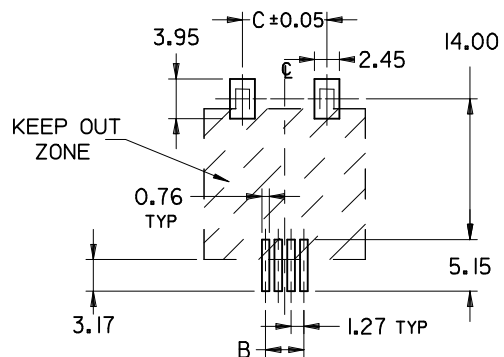
NOTES:

- 1- MATERIAL:
 - HOUSING: LCP FIBER GLASS FILLED UL 94-V0, COLOR BLACK.
 - TERMINAL: COPPER ALLOY PLATED WITH:
 - BASE FINISH: NICKEL
 - CONTACT SURFACE FINISH: GOLD
 - OR
 - GOLD FLASH OVER PALLADIUM NICKEL
 - EXCEEDS PRODUCT REQUIREMENTS BASED ON PS-95503-001
- SOLDER NAILS: COPPER ALLOY PLATED WITH TIN
- 2- JACK FOR MATING WITH IEC 60603-7 AND TIA-1096-A PLUGS (MOLEX 95075 SERIES).
- 3- PRODUCT SPECIFICATION PS-95503-001.
- 4- APPLICATION SPECIFICATION: AS-85513-001
- 5- PACKAGING SPECIFICATION: PK-85510
 - SHEET 1 (TAPE ON REEL)
 - SHEET 2 (BLISTER ON REEL 13')
 - SHEET 3 (BLISTER ON REEL 22')
- 6- COPLANARITY OF SIGNAL LEADS: 0.10 MAX
- 7- MANUFACTURING ID CAN BE EITHER MG, MXF OR MXI.
- 8- PICK AND PLACE KAPTON AVAILABLE AS OPTION.
- LAST INSPECTION NUMBER: 14



PCB MOUNTING PATTERNS

(SEE FROM COMPONENT SIDE)
(SCALE 2:1)



(ONLY 4/4 VERSION PADS SHOWN)
ALL DIMENSIONS REF DIMENSIONS

UPDATED DIMENSIONS EC NO: IPG2015-0192 TDRWN: JKEARNS 2014/07/25 CHKD: APPR: STGRIFFIN 2014/08/29	QUALITY SYMBOLS ▽=0 ◻=0	GENERAL TOLERANCES (UNLESS SPECIFIED)		DIMENSION STYLE MM ONLY		SCALE 5:1	DESIGN UNITS METRIC	THIRD ANGLE PROJECTION	
			mm	INCH	DRAWN BY HB	DATE 95/11/21	TITLE TOP ENTRY SMT JACKS 4/4 6/6 AND 8/8 POS. WITH SOLDER NAILS		
		4 PLACES	± ---	± ---	CHECKED BY TB	DATE 95/11/21	MOLEX INCORPORATED		
		3 PLACES	± ---	± ---	APPROVED BY FB	DATE 95/11/21			
2 PLACES	± 0.15	± ---	ANGULAR ± 2 °		MATERIAL NO.	DOCUMENT NO.	SHEET NO.		
1 PLACE	± 0.25	± ---	DRAFT WHERE APPLICABLE MUST REMAIN WITHIN DIMENSIONS		SEE CHART	SD-85510-002	1 OF 1		
THIS DRAWING CONTAINS INFORMATION THAT IS PROPRIETARY TO MOLEX INCORPORATED AND SHOULD NOT BE USED WITHOUT WRITTEN PERMISSION									