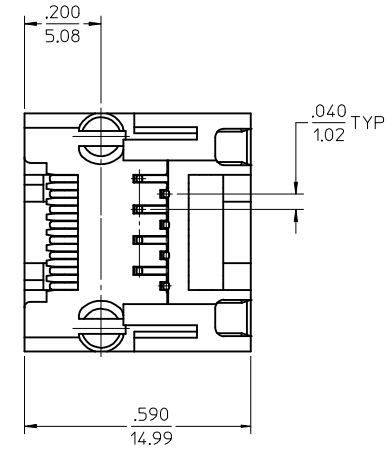
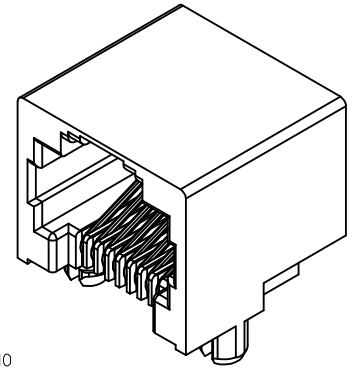
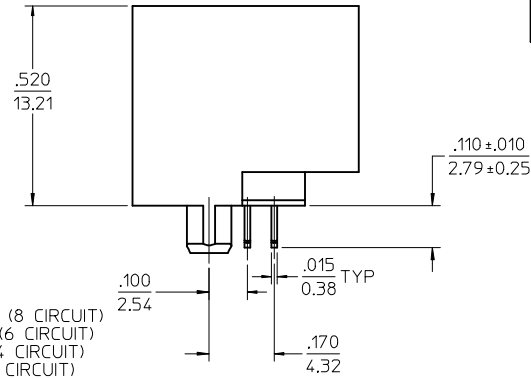
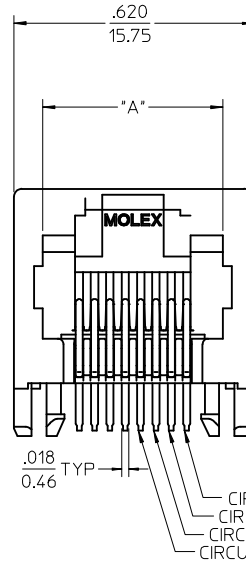
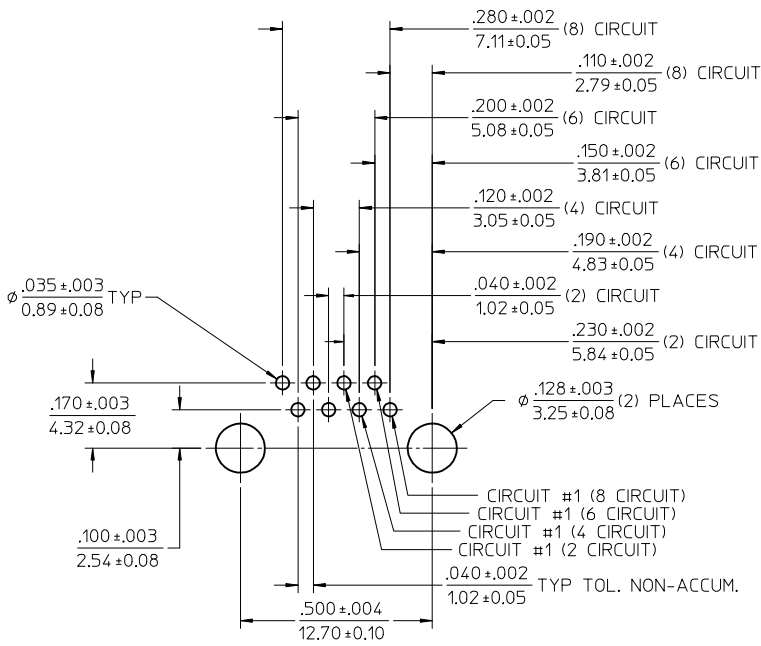


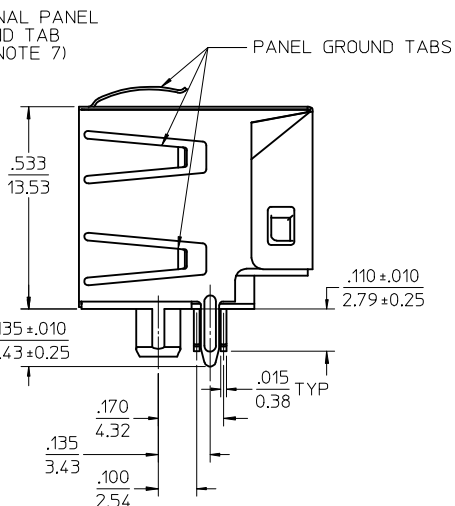
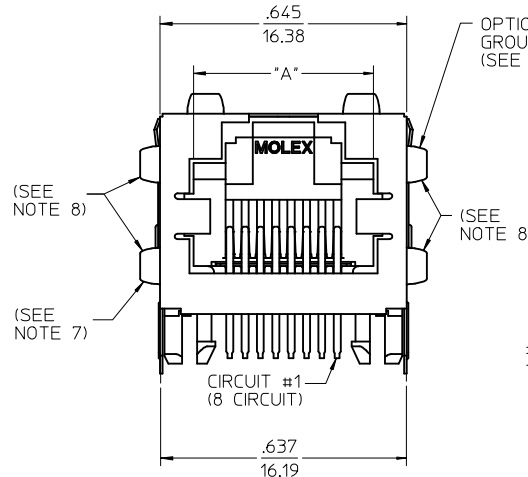
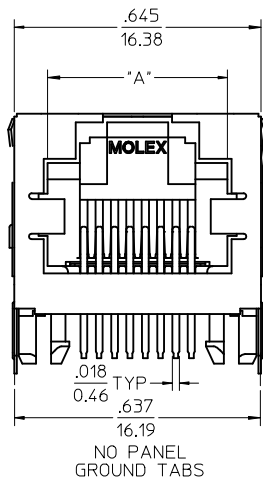
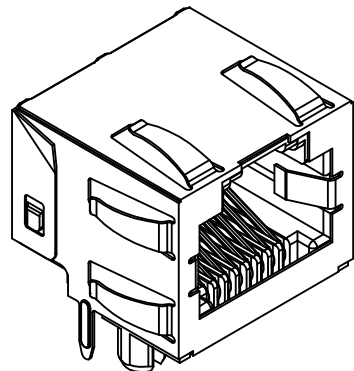
NOTES:

- 1) MATERIAL:  
HOUSING: NYLON(IPA), GLASS FILLED, UL94V-0, COLOR: SEE CHART  
TERMINALS: PHOSPHOR BRONZE
- 2) FINISH:  
TERMINALS:  
SELECT GOLD IN CONTACT AREA: 50 MICROINCHES (1.27 MICROMETERS) MIN.  
SELECT TIN IN PC TAIL AREA: 100 MICROINCHES (2.54 MICROMETERS) MIN.,  
WITH OVERALL NICKEL UNDERPLATE: 50 MICROINCHES (1.27 MICROMETERS) MIN.
- 3) PRODUCT SPECIFICATION: PS-43860-003.
- 4) PACKAGING SPECIFICATION:  
CONNECTOR ASSEMBLIES PACKAGED IN EXTRUDED TUBES PER MOLEX  
PACKAGING SPECIFICATION PK-43860-004.
- 5) ALL UNTOLERANCED DIMENSIONS ARE SHOWN FOR REFERENCE ONLY.
- 6) CONFORMS TO FCC REGULATION PART 68.5 FOR MODULAR JACKS.
- 7) THIS PART CONFORMS TO CLASS B REQUIREMENTS OF COSMETIC  
SPECIFICATION PS-45499-002.

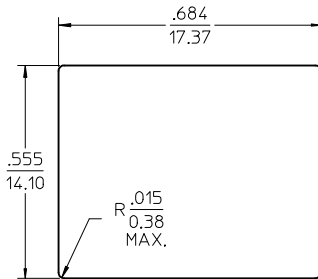


| ASSEMBLY MAT. NUM. | CONNECTOR SIZE | DIM "A"    | CIRCUITS | HOUSING COLOR |
|--------------------|----------------|------------|----------|---------------|
| 43860-0001         | 8              | .469/11.91 | 8        | BLACK         |
| 43860-0002         | 6              | .389/9.88  | 6        | BLACK         |
| 43860-0003         | 6              | .389/9.88  | 4        | BLACK         |
| 43860-0019         | 8              | .469/11.91 | 4        | BLACK         |
| 43860-0020         | 6              | .389/9.88  | 2        | BLACK         |

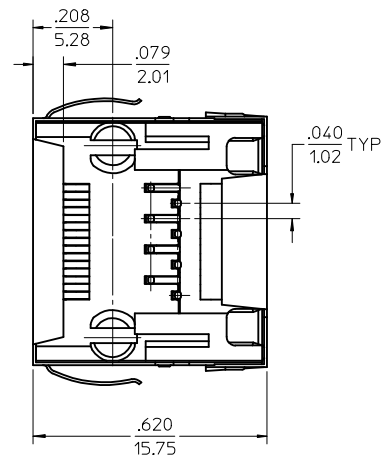
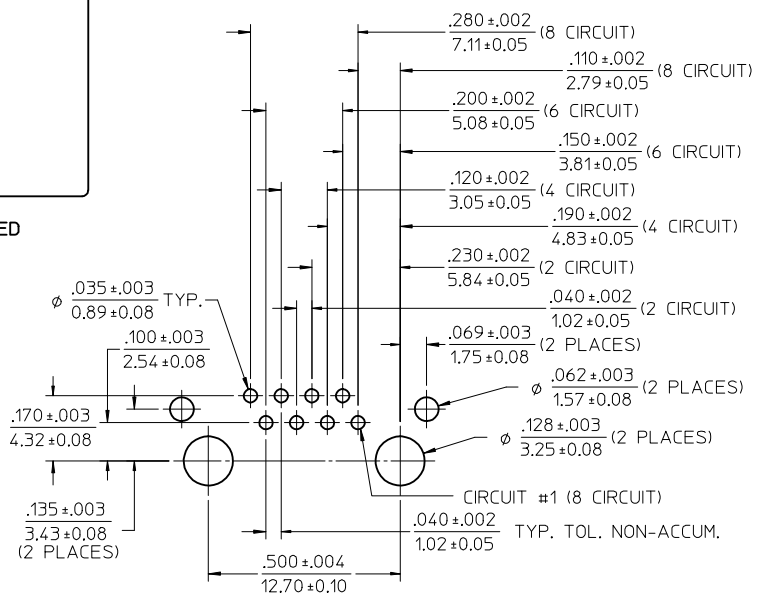
| <b>UPDATE VIEWS</b><br>EC NO: UCP2015-0148<br>DRAWN: NGUYEN 2014/08/25<br>CHKD: BELL 2014/08/25<br>APPR: F. SMITH 2015/05/19<br>REV: H9 | QUALITY SYMBOLS<br>▽=0<br>▽=0<br>▽=0 | GENERAL TOLERANCES (UNLESS SPECIFIED)<br><table border="1"> <tr> <th></th> <th>mm</th> <th>INCH</th> </tr> <tr> <td>4 PLACES</td> <td>± .25</td> <td>± .010</td> </tr> <tr> <td>3 PLACES</td> <td>± .25</td> <td>± .010</td> </tr> <tr> <td>2 PLACES</td> <td>± .25</td> <td>± .010</td> </tr> <tr> <td>1 PLACE</td> <td>± .25</td> <td>± .010</td> </tr> <tr> <td>0 PLACE</td> <td>± .25</td> <td>± .010</td> </tr> </table> |   | mm                 | INCH                                    | 4 PLACES | ± .25 | ± .010 | 3 PLACES | ± .25 | ± .010 | 2 PLACES | ± .25 | ± .010 | 1 PLACE | ± .25 | ± .010 | 0 PLACE | ± .25 | ± .010 | DIMENSION STYLE<br>IN/MM | SCALE<br>4:1 | DESIGN UNITS<br>INCH | THIRD ANGLE PROJECTION |
|---|--------------------------------------|---|---|--------------------|---|----------|-------|--------|----------|-------|--------|----------|-------|--------|---------|-------|--------|---------|-------|--------|--------------------------|--------------|----------------------|------------------------|
|   |                                      | mm  | INCH  |                    |   |          |       |        |          |       |        |          |       |        |         |       |        |         |       |        |                          |              |                      |                        |
|   | 4 PLACES                             | ± .25   | ± .010  |                    |   |          |       |        |          |       |        |          |       |        |         |       |        |         |       |        |                          |              |                      |                        |
|   | 3 PLACES                             | ± .25   | ± .010  |                    |   |          |       |        |          |       |        |          |       |        |         |       |        |         |       |        |                          |              |                      |                        |
| 2 PLACES  | ± .25                                | ± .010  |   |                    |   |          |       |        |          |       |        |          |       |        |         |       |        |         |       |        |                          |              |                      |                        |
| 1 PLACE   | ± .25                                | ± .010  |   |                    |   |          |       |        |          |       |        |          |       |        |         |       |        |         |       |        |                          |              |                      |                        |
| 0 PLACE   | ± .25                                | ± .010  |   |                    |   |          |       |        |          |       |        |          |       |        |         |       |        |         |       |        |                          |              |                      |                        |
| DRAFT WHERE APPLICABLE MUST REMAIN WITHIN DIMENSIONS  |                                      | MATERIAL NO.<br>SEE CHART   | DRAWN BY<br>TALEND  | DATE<br>1997/02/13 | TITLE<br>INVERTED MODULAR JACK ASSEMBLY |          |       |        |          |       |        |          |       |        |         |       |        |         |       |        |                          |              |                      |                        |
| ANGULAR ±1/2°   |                                      | DOCUMENT NO.<br>SD-43860-001  | CHECKED BY<br>ROBERTS   | DATE<br>1997/03/03 | SHEET NO.<br>1 OF 5                     |          |       |        |          |       |        |          |       |        |         |       |        |         |       |        |                          |              |                      |                        |
| APPROVED BY<br>FRY  |                                      | DATE<br>1997/03/04  | THIS DRAWING CONTAINS INFORMATION THAT IS PROPRIETARY TO MOLEX INCORPORATED AND SHOULD NOT BE USED WITHOUT WRITTEN PERMISSION |                    |   |          |       |        |          |       |        |          |       |        |         |       |        |         |       |        |                          |              |                      |                        |



- NOTES:
- MATERIAL:  
HOUSING: NYLON(PA), GLASS FILLED, UL94V-0,  
COLOR: BLACK  
TERMINALS: PHOSPHOR BRONZE  
SHIELD: BRASS
  - FINISH:  
TERMINALS:  
SELECT GOLD IN CONTACT AREA: 50 MICROINCHES/  
1.27 MICROMETERS MIN.,  
SELECT TIN IN PC TAIL AREA: 100 MICROINCHES/  
2.54 MICROMETERS MIN.,  
WITH OVERALL NICKEL UNDERPLATE: 50 MICROINCHES/  
1.27 MICROMETERS MIN.  
SHIELD:  
100 MICROINCHES/2.54 MICROMETERS NICKEL OVER  
50 MICROINCHES/1.27 MICROMETERS COPPER  
UNDERPLATE, PCB GROUND TABS DIPPED IN TIN
  - PRODUCT SPECIFICATION: PS-43860-003.
  - PACKAGING SPECIFICATION:  
CONNECTOR ASSEMBLIES PACKAGED IN THERMOFORMED TRAYS  
PER MOLEX PACKAGING SPECIFICATION PK-43860-005.  
43860-5025 CONNECTOR ASSEMBLIES PACKAGED IN TAPE AND  
REEL PER MOLEX PACKAGING SPECIFICATION PK-70873-700\*
  - ALL UNTOLERANCED DIMENSIONS ARE SHOWN FOR REFERENCE ONLY.
  - CONFORMS TO FCC REGULATION PART 68.5 FOR MODULAR JACKS.
  - AVAILABLE WITH THE (2) SPECIFIED PANEL GROUND TABS  
OMITTED FOR SIDE TO SIDE STACKABILITY, PER THE ASSEMBLY  
MATERIAL NUMBER TABLE.
  - AVAILABLE WITH TOP PANEL GROUND TABS ONLY, PER THE  
ASSEMBLY MATERIAL NUMBER TABLE.
  - THIS PART CONFORMS TO CLASS B REQUIREMENTS OF COSMETIC  
SPECIFICATION PS-45499-002.



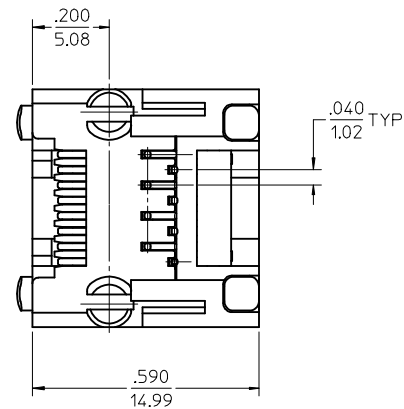
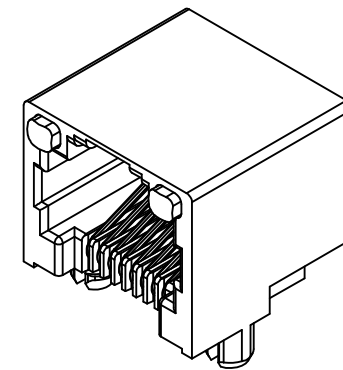
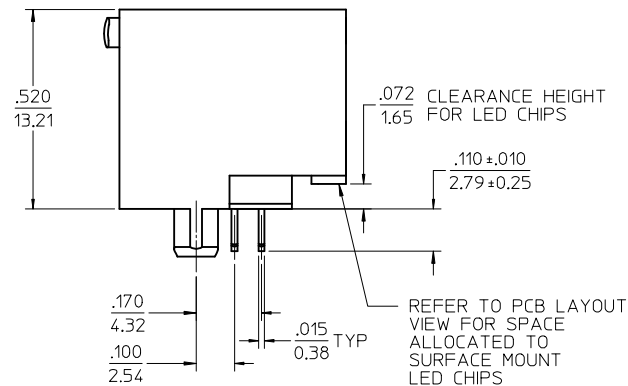
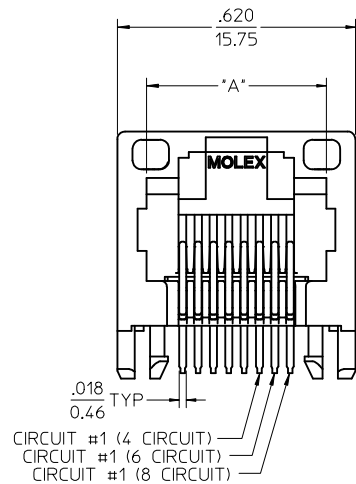
RECOMMENDED  
PANEL  
OPENING



PC BOARD LAYOUT  
COMPONENT SIDE OF BOARD  
RECOMMENDED PCB THICKNESS .062 ±.005/1.57 ±.013

| ASSEMBLY MAT. NUM. | CONNECTOR SIZE | DIM "A"    | CIRCUITS | PANEL GROUND TABS | PACKAGING OPTION |
|--------------------|----------------|------------|----------|-------------------|------------------|
| 43860-0004         | 8              | .469/11.91 | 8        | ALL               | TRAY             |
| 43860-0005         | 6              | .389/9.88  | 6        | ALL               | TRAY             |
| 43860-0006         | 6              | .389/9.88  | 4        | ALL               | TRAY             |
| 43860-0013         | 8              | .469/11.91 | 8        | SEE NOTE #7       | TRAY             |
| 43860-0014         | 6              | .389/9.88  | 6        | SEE NOTE #7       | TRAY             |
| 43860-0015         | 6              | .389/9.88  | 4        | SEE NOTE #7       | TRAY             |
| 43860-0024         | 6              | .389/9.88  | 2        | ALL               | TRAY             |
| 43860-0025         | 8              | .469/11.91 | 8        | NONE              | TRAY             |
| 43860-0026         | 6              | .389/9.88  | 6        | NONE              | TRAY             |
| 43860-0027         | 6              | .389/9.88  | 4        | NONE              | TRAY             |
| 43860-0031         | 8              | .469/11.91 | 8        | SEE NOTE #8       | TRAY             |
| 43860-5025         | 8              | .469/11.91 | 8        | NONE              | TAPE             |

|   |                                      |  |  |                                  |  |   |                             |  |  |  |
|---|--------------------------------------|--|--|----------------------------------|--|---|-----------------------------|--|--|--|
| <b>SEE SHEET 1</b><br>EC NO: UCP2015-0148<br>DRAWING: NGUYEN 2014/08/25<br>CHKD: J.BELL 2014/08/25<br>APPR: F.S.MITH 2015/05/19<br>H9 | QUALITY SYMBOLS<br>∇=0<br>∇=0<br>∇=0 | GENERAL TOLERANCES (UNLESS SPECIFIED)  |  | DIMENSION STYLE<br><b>IN/MM</b>  |  | SCALE<br><b>4:1</b>   | DESIGN UNITS<br><b>INCH</b> | THIRD ANGLE PROJECTION                         |  |  |
|   |                                      | 4 PLACES ± --- ± ---<br>3 PLACES ± --- ±.010<br>2 PLACES ±.025 ± ---<br>1 PLACE ± --- ± ---<br>0 PLACE ± ± |  | DRAWN BY<br>TALEND 1997/02/13    |  | DATE<br>1997/02/13  |                             | TITLE<br><b>INVERTED MODULAR JACK ASSEMBLY</b> |  |  |
|   |                                      | ANGULAR ±1/2°  |  | CHECKED BY<br>ROBERTS 1997/03/03 |  | DATE<br>1997/03/03  |                             | MATERIAL NO.<br><b>SEE CHART</b>               |  |  |
|   |                                      | DRAFT WHERE APPLICABLE MUST REMAIN WITHIN DIMENSIONS   |  | APPROVED BY<br>FRY 1997/03/04    |  | DATE<br>1997/03/04  |                             | DOCUMENT NO.<br><b>SD-43860-001</b>            |  |  |
| SHEET NO. 2 OF 5  |                                      |  |  |                                  |  | THIS DRAWING CONTAINS INFORMATION THAT IS PROPRIETARY TO MOLEX INCORPORATED AND SHOULD NOT BE USED WITHOUT WRITTEN PERMISSION |                             |  |  |  |

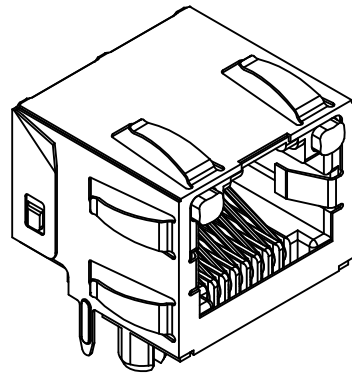


NOTES:

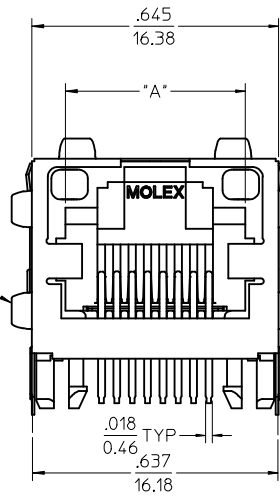
- 1) MATERIAL:  
 HOUSING: NYLON(PA), GLASS FILLED, UL94V-0, COLOR: BLACK  
 TERMINALS: PHOSPHOR BRONZE  
 LIGHT PIPES:  
 POLYCARBONATE - WAVE OR HAND SOLDER ONLY  
 (NOT DESIGNED FOR I/R REFLOW OR CONVECTION REFLOW SOLDER PROCESSES)  
 POLYSULFONE - MAXIMUM REFLOW TEMPERATURE 400°F (205°C)
- 2) FINISH:  
 TERMINALS:  
 SELECT GOLD IN CONTACT AREA: 50 MICROINCHES (1.27 MICROMETERS) MIN.,  
 SELECT TIN IN PC TAIL AREA: 100 MICROINCHES (2.54 MICROMETERS) MIN.,  
 WITH OVERALL NICKEL UNDERPLATE: 50 MICROINCHES (1.27 MICROMETERS) MIN.
- 3) PRODUCT SPECIFICATION AND PROCESSING PARAMETERS: PS-43860-003.
- 4) PACKAGING SPECIFICATION:  
 CONNECTOR ASSEMBLIES PACKAGED IN EXTRUDED TUBES PER MOLEX PACKAGING SPECIFICATION PK-43860-004.
- 5) APPLICATION SPECIFICATION: AS-43860-001
- 6) ALL UNTOLERANCED DIMENSIONS ARE SHOWN FOR REFERENCE ONLY.
- 7) CONFORMS TO FCC REGULATION PART 68.5 FOR MODULAR JACKS.
- 8) REFER TO SHEET (5) OF (5) FOR RECOMMENDED PCB LAYOUT.
- 9) THIS PART CONFORMS TO CLASS B REQUIREMENTS OF COSMETIC SPECIFICATION PS-45499-002.

| ASSEMBLY MAT. NUM. | LIGHT PIPE MATERIAL | CONNECTOR SIZE | DIM "A"    | CIRCUITS |
|--------------------|---------------------|----------------|------------|----------|
| 43860-0007         | POLYCARBONATE       | 8              | .469/11.91 | 8        |
| 43860-0008         | POLYCARBONATE       | 6              | .389/9.88  | 6        |
| 43860-0009         | POLYCARBONATE       | 6              | .389/9.88  | 4        |
| 43860-0021         | POLYSULFONE         | 8              | .469/11.91 | 8        |
| 43860-0022         | POLYSULFONE         | 6              | .389/9.88  | 6        |
| 43860-0023         | POLYSULFONE         | 6              | .389/9.88  | 4        |

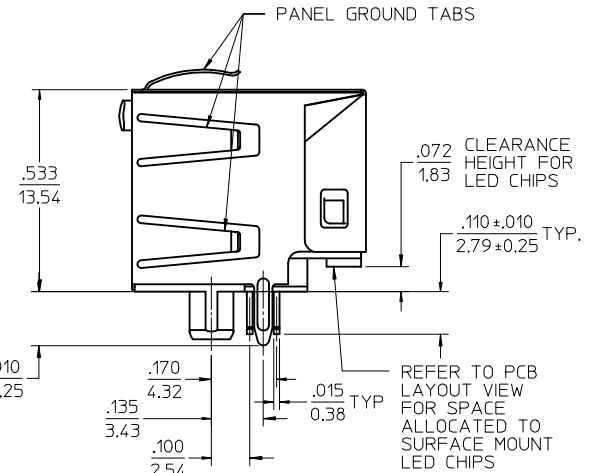
|   |  |                   |                 |  |                 |       |  |   |   |
|---|--|-------------------|-----------------|--|-----------------|-------|--|---|---|
| SEE SHEET 1<br>EC NO: UCP2015-0148<br>DRAWN: NGUYEN<br>CHKD: BELL<br>APPR: F. SMITH | 2014/08/25<br>2014/08/25<br>2015/05/19 | DESCRIPTION<br>H9 | QUALITY SYMBOLS | GENERAL TOLERANCES (UNLESS SPECIFIED)                | DIMENSION STYLE | SCALE | DESIGN UNITS   | THIRD ANGLE PROJECTION  |   |
|   |  |                   | ▽=0             | mm INCH  | IN/MM           | 4:1   | INCH   | DRAWN BY DATE<br>TALEND 1997/02/13<br>CHECKED BY DATE<br>ROBERTS 1997/03/03<br>APPROVED BY DATE<br>FRY 1997/03/04 | TITLE<br>INVERTED MODULAR JACK ASSEMBLY |
|   |  |                   | ▽=0             | 4 PLACES ± --- ± ---                                 | ± .010          | DATE  | MATERIAL NO.<br>SEE CHART<br>DOCUMENT NO.<br>SD-43860-001<br>SHEET NO.<br>3 OF 5 |   |   |
|   |  |                   | ▽=0             | 3 PLACES ± --- ± ---                                 | ± .010          | DATE  |  |   |   |
| ▽=0   | 2 PLACES ± 0.25 ± ---                  | ± ---             | DATE            |  |                 |       |  |   |   |
|   |  |                   | ANGULAR ±1/2°   | DRAFT WHERE APPLICABLE MUST REMAIN WITHIN DIMENSIONS | SIZE            |       |  |   |   |
|   |  |                   |                 |  |                 |       |  |   |   |



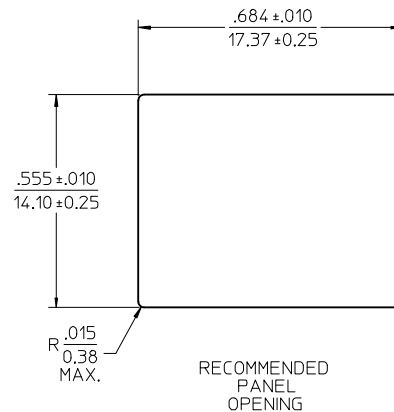
OPTIONAL PANEL GROUND TAB (SEE NOTE 8)



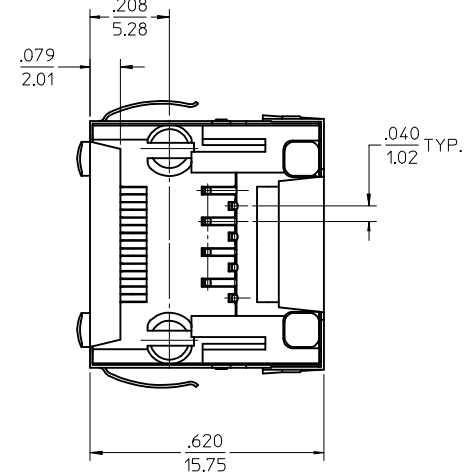
OPTIONAL PANEL GROUND TAB (SEE NOTE 8)



REFER TO PCB LAYOUT VIEW FOR SPACE ALLOCATED TO SURFACE MOUNT LED CHIPS



RECOMMENDED PANEL OPENING



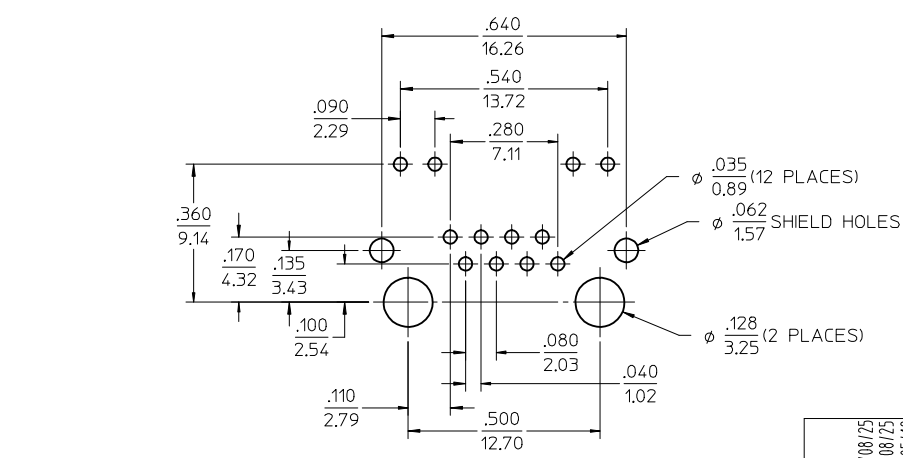
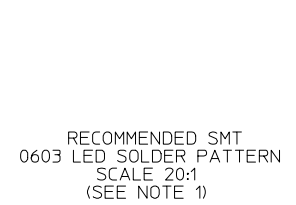
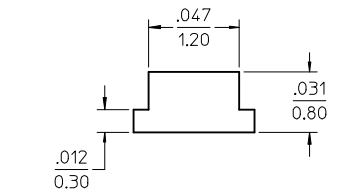
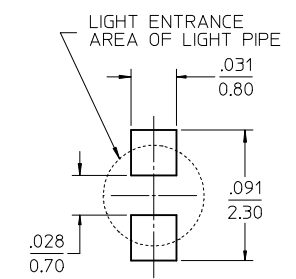
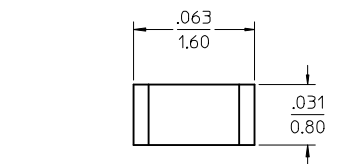
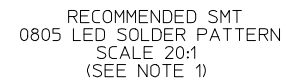
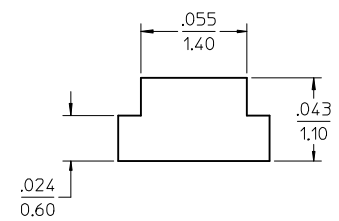
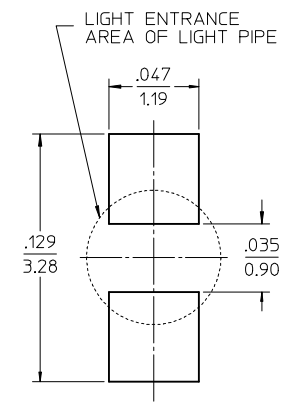
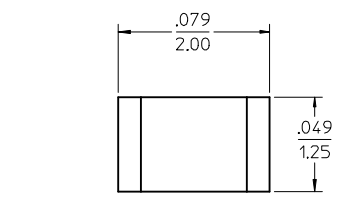
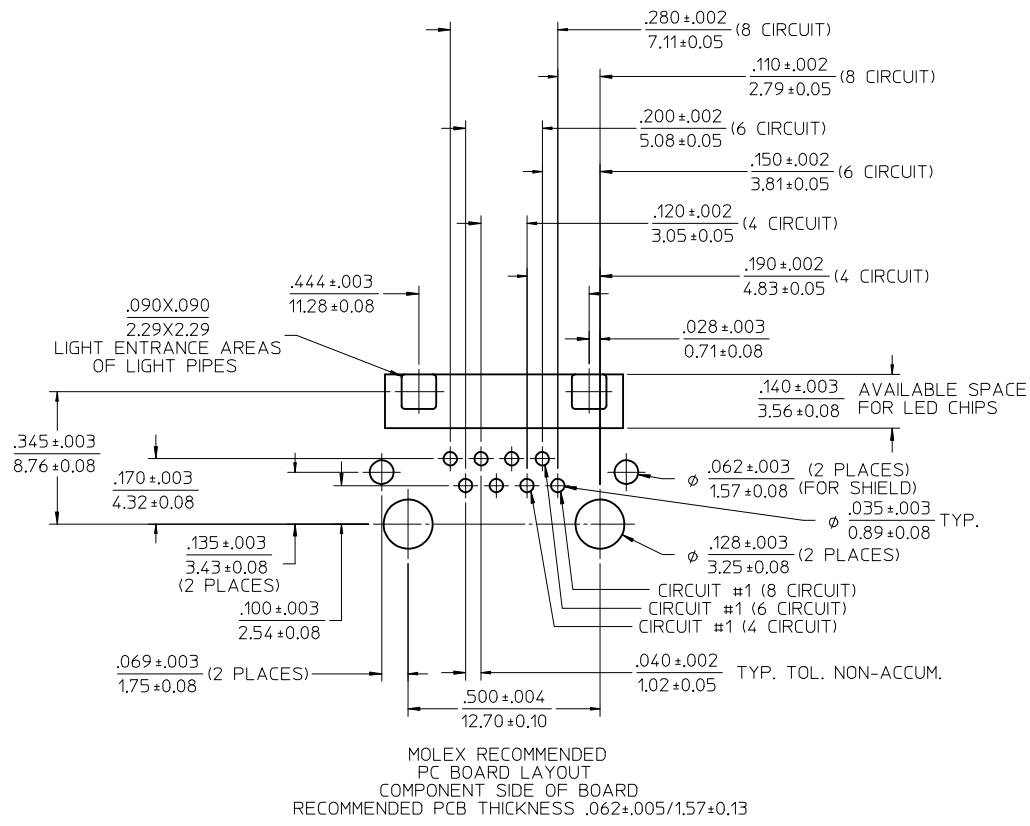
NOTES:

- 1) MATERIAL:  
HOUSING: NYLON(PA), GLASS FILLED, UL94V-0, COLOR: BLACK  
TERMINALS: PHOSPHOR BRONZE  
SHIELD: BRASS  
LIGHT PIPES:  
POLYCARBONATE - WAVE OR HAND SOLDER ONLY (NOT DESIGNED FOR I/R REFLOW OR CONVECTION REFLOW SOLDER PROCESSES)  
POLYSULFONE - MAXIMUM REFLOW TEMPERATURE 400°F (205°C)
- 2) FINISH:  
TERMINALS:  
SELECT GOLD IN CONTACT AREA: 50 MICROINCHES/1.27 MICROMETERS MIN.  
SELECT TIN IN PC TAIL AREA: 100 MICROINCHES/2.54 MICROMETERS MIN.  
WITH OVERALL NICKEL UNDERPLATE: 50 MICROINCHES/1.27 MICROMETERS MIN.  
SHIELD:  
100 MICROINCHES/2.54 MICROMETERS OVER 50 MICROINCHES/1.27 MICROMETERS COPPER UNDERPLATE, PCB GROUND TABS DIPPED IN TIN
- 3) PRODUCT SPECIFICATION AND PROCESSING PARAMETERS: PS-43860-003.
- 4) PACKAGING SPECIFICATION:  
CONNECTOR ASSEMBLIES PACKAGED IN THERMOFORMED TRAYS PER MOLEX PACKAGING SPECIFICATION PK-43860-005.
- 5) APPLICATION SPECIFICATION: AS-43860-001
- 6) ALL UNTOLERANCED DIMENSIONS ARE SHOWN FOR REFERENCE ONLY.
- 7) CONFORMS TO FCC REGULATION PART 68.5 FOR MODULAR JACKS.
- 8) AVAILABLE WITH THE (2) SPECIFIED PANEL GROUND TABS OMITTED FOR SIDE TO SIDE STACKABILITY, PER THE ASSEMBLY MATERIAL NUMBER TABLE.
- 9) REFER TO SHEET (5) OF (5) FOR RECOMMENDED PCB LAYOUT.
- 10) THIS PART CONFORMS TO CLASS B REQUIREMENTS OF COSMETIC SPECIFICATION PS-45499-002.

| ASSEMBLY MAT. NUM. | LIGHT PIPE MATERIAL | CONNECTOR SIZE | DIM "A"    | CIRCUITS | PANEL GROUND TABS |
|--------------------|---------------------|----------------|------------|----------|-------------------|
| 43860-0010         | POLYCARBONATE       | 8              | .469/11.91 | 8        | ALL               |
| 43860-0011         | POLYCARBONATE       | 6              | .389/9.88  | 6        | ALL               |
| 43860-0012         | POLYCARBONATE       | 6              | .389/9.88  | 4        | ALL               |
| 43860-0016         | POLYCARBONATE       | 8              | .469/11.91 | 8        | SEE NOTE #8       |
| 43860-0017         | POLYCARBONATE       | 6              | .389/9.88  | 6        | SEE NOTE #8       |
| 43860-0018         | POLYCARBONATE       | 6              | .389/9.88  | 4        | SEE NOTE #8       |
| 43860-1010         | POLYSULFONE         | 8              | .469/11.91 | 8        | ALL               |
| 43860-1011         | POLYSULFONE         | 6              | .389/9.88  | 6        | ALL               |
| 43860-1012         | POLYSULFONE         | 6              | .389/9.88  | 4        | ALL               |
| 43860-1016         | POLYSULFONE         | 8              | .469/11.91 | 8        | SEE NOTE #8       |
| 43860-1017         | POLYSULFONE         | 6              | .389/9.88  | 6        | SEE NOTE #8       |
| 43860-1018         | POLYSULFONE         | 6              | .389/9.88  | 4        | SEE NOTE #8       |

|  |                     |  |            |                          |                    |   |                      |                        |  |
|--|---------------------|--|------------|--------------------------|--------------------|---|----------------------|------------------------|--|
| SEE SHEET 1<br>EC NO: UCP2015-0148<br>DRAWN: NGUYEN 2014/08/25<br>CHKD: BELL 2014/08/25<br>APPR: FSMITH 2015/05/19<br>H9 | QUALITY SYMBOLS<br> | GENERAL TOLERANCES (UNLESS SPECIFIED)  |            | DIMENSION STYLE<br>IN/MM |                    | SCALE<br>4:1                            | DESIGN UNITS<br>INCH | THIRD ANGLE PROJECTION |  |
|  |                     | 4 PLACES ± --- ± ---<br>3 PLACES ± --- ± .010<br>2 PLACES ± 0.25 ± ---<br>1 PLACE ± --- ± ---<br>0 PLACE ± ± | mm<br>INCH | DRAWN BY<br>TALEND       | DATE<br>1997/02/13 | TITLE<br>INVERTED MODULAR JACK ASSEMBLY |                      |                        |  |
|  |                     | ANGULAR ±1/2°  |            | CHECKED BY<br>ROBERTS    | DATE<br>1997/03/03 | MATERIAL NO.<br>SEE CHART               |                      |                        |  |
|  |                     | DRAFT WHERE APPLICABLE MUST REMAIN WITHIN DIMENSIONS   |            | APPROVED BY<br>FRY       | DATE<br>1997/03/04 | DOCUMENT NO.<br>SD-43860-001            |                      | SHEET NO.<br>4 OF 5    |  |

THIS DRAWING CONTAINS INFORMATION THAT IS PROPRIETARY TO MOLEX INCORPORATED AND SHOULD NOT BE USED WITHOUT WRITTEN PERMISSION



RECOMMENDED SMT 0603 LED DIMENSIONS SCALE 20:1 (SEE NOTE 1)

RECOMMENDED SMT 0603 LED SOLDER PATTERN SCALE 20:1 (SEE NOTE 1)

NOTES:  
1. FOR CROSS REFERENCE OF RECOMMENDED LED'S SEE MOLEX WEB SITE

|   |                                      |   |  |   |  |   |                      |                        |  |
|---|--------------------------------------|---|--|---|--|---|----------------------|------------------------|--|
| SEE SHEET 1<br>EC NO: UCP2015-0148<br>DRAWN: NGUYEN 2014/08/25<br>CHKD: J.BELL 2014/08/25<br>APPR: F.SMITH 2015/05/19<br>H9 | QUALITY SYMBOLS<br>▽=0<br>▽=0<br>▽=0 | GENERAL TOLERANCES (UNLESS SPECIFIED)   |  | DIMENSION STYLE<br>IN/MM  |  | SCALE<br>4:1  | DESIGN UNITS<br>INCH | THIRD ANGLE PROJECTION |  |
|   |                                      | 4 PLACES ± --- ± ---<br>3 PLACES ± --- ± .010<br>2 PLACES ± .25 ± ---<br>1 PLACE ± --- ± ---<br>0 PLACE ± ± |  | DRAWN BY DATE<br>TALEND 1997/02/13<br>CHECKED BY DATE<br>ROBERTS 1997/03/03<br>APPROVED BY DATE<br>FRY 1997/03/04 |  | TITLE<br>INVERTED MODULAR JACK ASSEMBLY   |                      |                        |  |
|   |                                      | ANGULAR ±1/2°   |  | MATERIAL NO.<br>SEE CHART   |  | DOCUMENT NO.<br>SD-43860-001  |                      | SHEET NO.<br>5 OF 5    |  |
|   |                                      | DRAFT WHERE APPLICABLE MUST REMAIN WITHIN DIMENSIONS  |  |   |  | THIS DRAWING CONTAINS INFORMATION THAT IS PROPRIETARY TO MOLEX INCORPORATED AND SHOULD NOT BE USED WITHOUT WRITTEN PERMISSION |                      |                        |  |