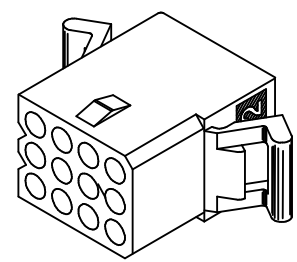


PLUG HOUSING (NOT TO SCALE)



RECEPTACLE HOUSING (NOT TO SCALE)

PK SPEC EC NO: UCP2015-0466 DRWN:JDFX 2014/08/05 CHKD:MKJPPER 2014/08/04 APPR:FSMITH 2014/08/14	DESCRIPTION REV	QUALITY SYMBOLS	GENERAL TOLERANCES (UNLESS SPECIFIED)	DIMENSION STYLE	SCALE	DESIGN UNITS	THIRD ANGLE PROJECTION	
				IN/MM	1:1	INCH		
			mm INCH	DRAWN BY DATE	TITLE	.062/(1.57) HOUSINGS, PLUG & RECEPTACLE 12 CKT, 145 CENTERS		
				GWC 1993/02/01				
			4 PLACES ± --- ± ---	CHECKED BY DATE	molex			
			3 PLACES ± --- ± .010	RW 1993/02/01				
			2 PLACES ± 0.25 ± .014	APPROVED BY DATE	SD-1625-12*			
			1 PLACE ± 0.36 ± ---	RAS 1993/02/01				
			0 PLACE ± ±	MATERIAL NO.	DOCUMENT NO.	SHEET NO.		
J1			ANGULAR ± 1 °	SEE CHART		1 OF 2		
			DRAFT WHERE APPLICABLE MUST REMAIN WITHIN DIMENSIONS	SIZE C	THIS DRAWING CONTAINS INFORMATION THAT IS PROPRIETARY TO MOLEX INCORPORATED AND SHOULD NOT BE USED WITHOUT WRITTEN PERMISSION			

PLUG	
PART NO.	ENG. NO.
03-06-2121	1625-12P
03-06-7121	1625-12PBK
03-06-2122	1625-12P1
03-06-7122	1625-12P1BK

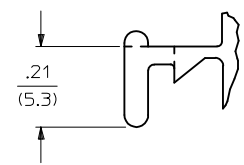
RECEPTACLE	
PART NO.	ENG. NO.
03-06-1121	1625-12R
03-06-6121	1625-12RBK
03-06-1122	1625-12R1
03-06-6122	1625-12R1BK OBSOLETE

RECEPTACLE LEGEND

1625-12R***

CIRCUIT SIZE
 R = RECEPTACLE
 BLANK = WITH PREBENT MOUNTING EARS
 1 = WITHOUT EARS

COLOR:
 BLANK = NATURAL COLOR
 AM = AMBER BK = BLACK BU = BLUE
 BN = BROWN GY = GRAY GN = GREEN
 OR = ORANGERD = RED YW = YELLOW



DETAIL 1

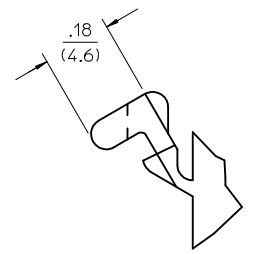
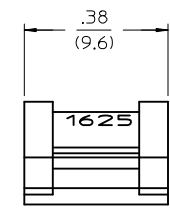
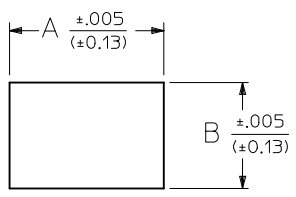
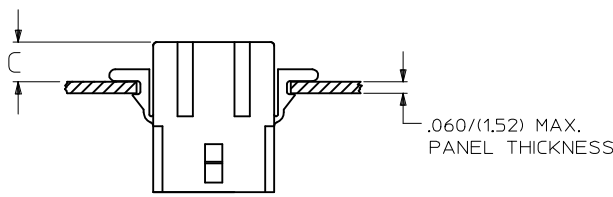
STANDARD MOUNTING EAR
 SCALE 4:1

PLUG LEGEND

1625-12P***

CIRCUIT SIZE
 P = PLUG
 BLANK = WITH PREBENT EARS
 1 = WITHOUT EARS

COLOR:
 BLANK = NATURAL COLOR
 AM = AMBER BK = BLACK BU = BLUE
 BN = BROWN GY = GRAY GN = GREEN
 OR = ORANGE RD = RED YW = YELLOW



RECOMMENDED HOLE PATTERN

RECEP.	.795 (20.19)	.563 (14.30)		.23 (5.8)
PLUG	.903 (22.94)	.614 (15.60)	.21 (5.3)	.22 (5.5)
PART	DIM. A	DIM. B	DIM. C (STANDARD EAR)	DIM. C (PREBENT EAR)

DETAIL 2
 .062/(1.57) PREBENT MOUNTING EAR
 SCALE 4:1

- NOTES:
1. MATERIAL: NYLON TYPE 6/6, 94V-2.
 2. FINISH: NONE
 3. PRODUCT SPECIFICATION: PS-02-06
 4. PACKAGING INFORMATION: PK-1625-003
 5. THIS HOUSING FOR USE WITH .062/(1.57) DIA. TERMINALS.

- WHERE DENOTED IN CHART, TOOLS ARE BUILT WITH PREBENT MOUNTING EARS PER DETAIL 2 AND SUPERSEDE ALL TOOLS PREVIOUSLY BUILT WITH THE STANDARD MOUNTING EARS.
- CIRCUIT I.D. NUMBERS APPEAR ON PARTS FROM TOOLS BUILT AFTER 2/1/93.

SEE SHEET 1 EC NO: UCP2015-0466 DRWN: JDFX 2014/08/05 CHKD: HKIPPER 2014/08/04 APPR: FSMITH 2014/08/14	QUALITY SYMBOLS = 0 = 0 = 0	GENERAL TOLERANCES (UNLESS SPECIFIED)		DIMENSION STYLE IN/MM		SCALE 1:1	DESIGN UNITS INCH	THIRD ANGLE PROJECTION	
		4 PLACES ± --- ± ---	3 PLACES ± --- ± .010	2 PLACES ± 0.25 ± .014	1 PLACE ± 0.36 ± ---	0 PLACE ± ±	DRAWN BY GWC 1993/02/01	DATE 1993/02/01	.062/(1.57) HOUSINGS, PLUG & RECEPTACLE 12 CKT, 145 CENTERS molex SD-1625-12*
		DRAFT WHERE APPLICABLE MUST REMAIN WITHIN DIMENSIONS					CHECKED BY RW 1993/02/01	DATE 1993/02/01	
		ANGULAR ± 1 °					APPROVED BY RAS 1993/02/01	DATE 1993/02/01	
MATERIAL NO. SEE CHART			DOCUMENT NO. SD-1625-12*		SHEET NO. 2 OF 2				

THIS DRAWING CONTAINS INFORMATION THAT IS PROPRIETARY TO MOLEX INCORPORATED AND SHOULD NOT BE USED WITHOUT WRITTEN PERMISSION