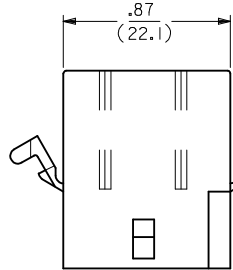


FACTORY I.D. CIRCUIT NUMBERS

CIRCUIT I.D. NUMBERS

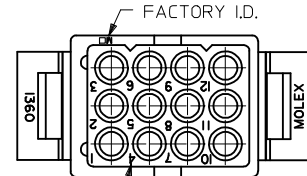


OPTIONAL MOUNTING EAR (PREBENT EAR SHOWN)

1.02±.03 (25.9±0.8)

OPTIONAL LOCKING RAMPS

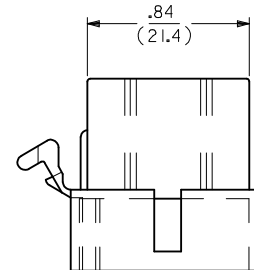
.69 (17.6)



FACTORY I.D.

CIRCUIT NUMBERS

CIRCUIT I.D. NUMBERS



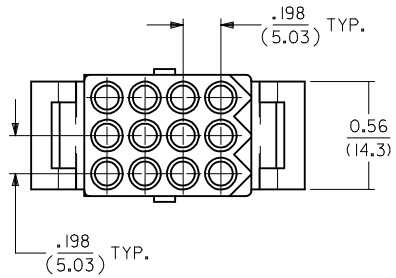
OPTIONAL MOUNTING EAR (PREBENT EAR SHOWN)

.98±.03 (24.9±0.8)

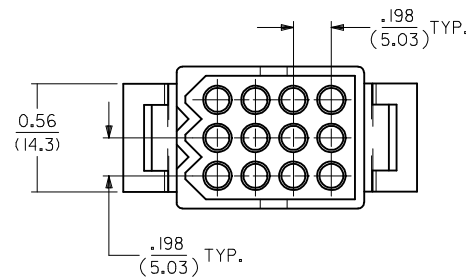
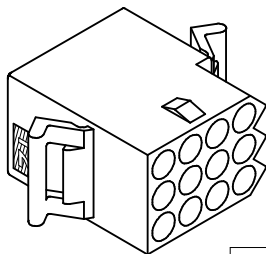
0.42 (10.7)

.98 (24.8)

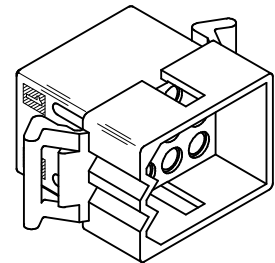
.74 (18.8)



RECEPTACLE



PLUG



OBsolete 1360-R1* EC NO: UCP2015-1850 DRWN:JFOX 2014/11/03 CHKD:HK/PPER 2014/11/03 APPR:FSM/TH 2014/11/13	QUALITY SYMBOLS	GENERAL TOLERANCES (UNLESS SPECIFIED)	DIMENSION STYLE IN/MM	SCALE 2:1	DESIGN UNITS INCH	THIRD ANGLE PROJECTION
	▽=0	4 PLACES ± --- ± ---	DRAWN BY DATE KBW 3/1/89	TITLE	.093/(2.36) HOUSINGS PLUG AND RECEPTACLE 12 CKT, .198/(5.03)CTR.	
	▽=0	3 PLACES ± --- ±.010	CHECKED BY DATE RW 3/1/89	MATERIAL NO.	DOCUMENT NO.	SHEET NO.
	▽=0	2 PLACES ±0.25 ±.014	APPROVED BY DATE FSM/TH 2014/11/13	SEE CHART	SD-1360-*	1 OF 2
0	1 PLACE ±0.35 ± ---	0 PLACE ± --- ± ---	ANGULAR ± 2 °	THIS DRAWING CONTAINS INFORMATION THAT IS PROPRIETARY TO MOLEX INCORPORATED AND SHOULD NOT BE USED WITHOUT WRITTEN PERMISSION		
0	DRAFT WHERE APPLICABLE MUST REMAIN WITHIN DIMENSIONS					
AE2						

PLUG		
ORDER NO	ENG NO	
03-09-2121	I360-P	
03-09-2122 Δ	I360-PI	
03-09-7121	I360-PBK	
03-09-7122 Δ	I360-PIBK	OBSOLETE

RECEPTACLE		
ORDER NO	ENG NO	
03-09-1121	I360-R Δ	
03-09-1122	I360-R1	OBSOLETE
03-09-1125	I360-R2 Δ	
03-09-1126	I360-R3	
03-09-6121	I360-RBK	
03-09-6122	I360-RIBK	OBSOLETE
03-09-6125	I360-R2BK	
03-09-6126	I360-R3BK	
03-09-6123	I360-RIRD	OBSOLETE
03-09-6124	I360-RIYW	OBSOLETE

LEGEND: PLUG

I360-P***

P = PLUG

BLANK = WITHOUT EARS
I = WITH MOUNTING EARS

COLOR:

BLANK = NATURAL COLOR
AM = AMBER BK = BLACK BU = BLUE
BN = BROWN GY = GRAY GN = GREEN
OR = ORANGE RD = RED YW = YELLOW

LEGEND: RECEPTACLE

I360-R***

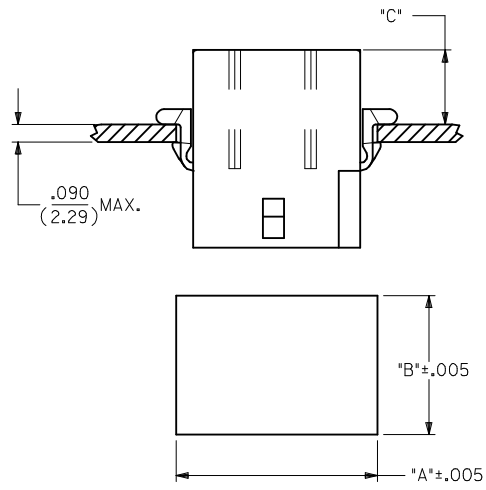
R = RECEPTACLE

OPTION	PREBENT EARS	LOCKING RAMP
BLANK	X	
1		
2	X	X
3		X

X = PRESENT

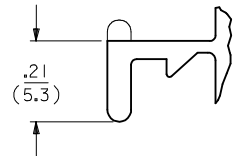
COLOR:

BLANK = NATURAL COLOR
AM = AMBER BK = BLACK BU = BLUE
BN = BROWN GY = GRAY GN = GREEN
OR = ORANGE RD = RED YW = YELLOW

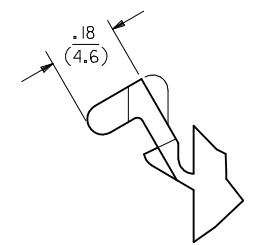
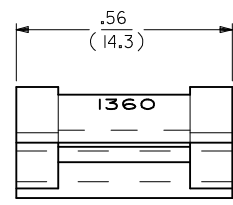


RECOMMENDED PANEL OPENING

HOUSING	DIM. "A"	DIM. "B"	"C" PREBENT EAR	"C" STANDARD EAR
PLUG	1.155/(29.34)	.760/(19.30)	.40/(10.2)	.36/(9.1)
RECEPT.	1.050/(26.67)	.725/(18.42)	.41/(10.4)	.37/(9.4)



DETAIL A
.093/(2.36) STANDARD MOUNTING EAR
(SCALE 4:1)



DETAIL B
.093/(2.36)PREBENT MOUNTING EAR
(SCALE 4:1)

- NOTES:
- MATERIAL: NYLON TYPE 6/6, UL94V-2
 - FINISH: N/A
 - PRODUCT SPECIFICATION: PS-02-09, PS-43660-9999
 - PACKAGING SPECIFICATION: PK-1360-001
 - CIRCUIT I.D. NUMBERS ON SIDE OF HOUSING APPEAR ON PARTS FROM TOOLS BUILT AFTER 10/22/91

- WHERE DENOTED IN CHART, TOOLS ARE BUILT WITH PREBENT MOUNTING EARS PER DETAIL B AND SUPERSEDE ALL TOOLS PREVIOUSLY BUILT WITH THE STANDARD EARS.
- PARTS CONFORM TO CLASS B REQUIREMENTS OF COSMETIC SPECIFICATION PS-45499-002.

SEE SHEET 1 SEC NO: UCP2015-1850 DRWN:JDFX 2014/11/03 CHKD:HKIPPER 2014/11/03 APPR:FSMITH 2014/11/13	DESCRIPTION REV AE2	QUALITY SYMBOLS	GENERAL TOLERANCES (UNLESS SPECIFIED)	DIMENSION STYLE IN/MM	SCALE 2:1	DESIGN UNITS INCH	THIRD ANGLE PROJECTION
		▽=0	4 PLACES ± --- ± ---	DRAWN BY KBW	DATE 3/1/89	TITLE .093/(2.36) HOUSINGS PLUG AND RECEPTACLE 12 CKT, .198/(5.03)CTR.	
		▽=0	3 PLACES ± --- ± .010	CHECKED BY RW	DATE 3/1/89	molex	
		▽=0	2 PLACES ± 0.25 ± .014	APPROVED BY FSMITH	DATE 2014/11/13		
			1 PLACE ± 0.35 ± ---	MATERIAL NO. SEE CHART	DOCUMENT NO. SD-1360-*	SHEET NO. 2 OF 2	
	0 PLACE ± --- ± ---	DRAFT WHERE APPLICABLE MUST REMAIN WITHIN DIMENSIONS			THIS DRAWING CONTAINS INFORMATION THAT IS PROPRIETARY TO MOLEX INCORPORATED AND SHOULD NOT BE USED WITHOUT WRITTEN PERMISSION		