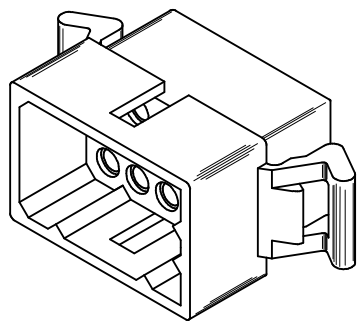
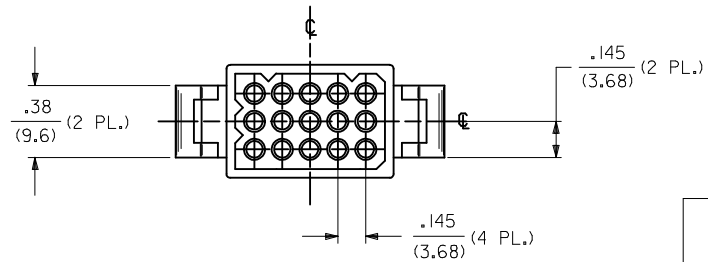
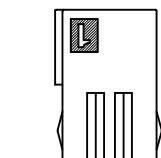
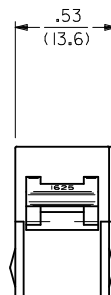
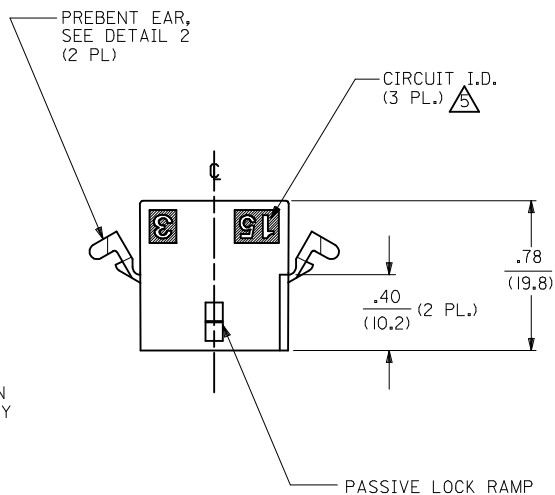
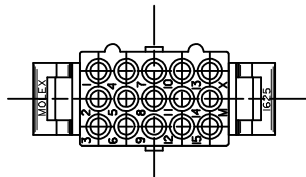


MTG. EAR NOT SHOWN FOR CKT. I.D. CLARITY

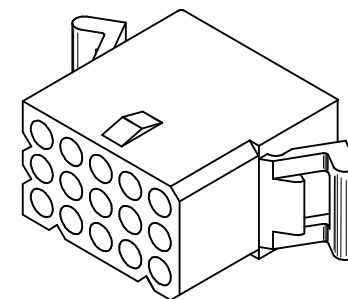
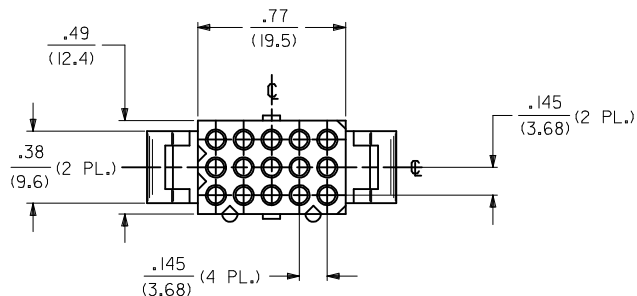


PLUG HOUSING

PK SPEC EC NO: UCP2015-0466 DRWN: JDOX CHKD: MKIPPER APPR: FSMITH	2014/08/05 2014/08/05 2014/08/14	DESCRIPTION REV	QUALITY SYMBOLS	GENERAL TOLERANCES (UNLESS SPECIFIED)	DIMENSION STYLE	SCALE	DESIGN UNITS	THIRD ANGLE PROJECTION	
			▽=0	mm INCH	IN/MM	2:1	INCH	☉	
			▽=0	4 PLACES ± --- ± ---	DRAWN BY DATE	TITLE	.062 HOUSING, PLUG AND RECEPTACLE, 15 CIRCUIT, .145 CENTERS molex		
			▽=0	3 PLACES ± --- ± .010	CHECKED BY DATE	DOCUMENT NO.			
▽=0	2 PLACES ± 0.25 ± .014	1 PLACE ± 0.35 ± ---	0 PLACE ± --- ± ---	APPROVED BY DATE	SIZE	SHEET NO. 1 OF 3 THIS DRAWING CONTAINS INFORMATION THAT IS PROPRIETARY TO MOLEX INCORPORATED AND SHOULD NOT BE USED WITHOUT WRITTEN PERMISSION			
Q3	ANGULAR ±1/2°	SEE CHART	SD-1625-15*						



MTG. EAR NOT SHOWN FOR CKT. I.D. CLARITY



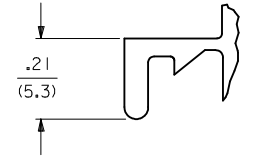
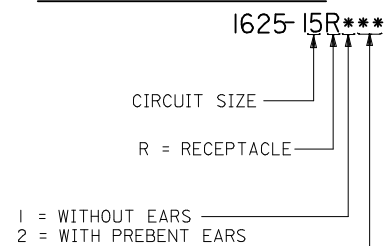
RECEPTACLE HOUSING

SEE SHEET 1 IEC NO: UCP2015-0466 2014/08/05 DRWN:IDFOX 2014/08/05 CHKD:MKIPPER 2014/08/14 APPR:FSMITH	DESCRIPTION REV Q3	QUALITY SYMBOLS	GENERAL TOLERANCES (UNLESS SPECIFIED)	DIMENSION STYLE IN/MM	SCALE 2:1	DESIGN UNITS INCH	THIRD ANGLE PROJECTION																															
		$\nabla = 0$ $\nabla = 0$ $\nabla = 0$	<table border="1"> <thead> <tr> <th></th> <th>mm</th> <th>INCH</th> </tr> </thead> <tbody> <tr> <td>4 PLACES</td> <td>± .010</td> <td>± .0004</td> </tr> <tr> <td>3 PLACES</td> <td>± .010</td> <td>± .0004</td> </tr> <tr> <td>2 PLACES</td> <td>± 0.25</td> <td>± .010</td> </tr> <tr> <td>1 PLACE</td> <td>± 0.35</td> <td>± .014</td> </tr> <tr> <td>0 PLACE</td> <td>± .010</td> <td>± .0004</td> </tr> </tbody> </table>		mm	INCH	4 PLACES	± .010	± .0004	3 PLACES	± .010	± .0004	2 PLACES	± 0.25	± .010	1 PLACE	± 0.35	± .014	0 PLACE	± .010	± .0004	<table border="1"> <thead> <tr> <th>DRAWN BY</th> <th>DATE</th> </tr> </thead> <tbody> <tr> <td>JDFOX</td> <td>2014/08/05</td> </tr> <tr> <th>CHECKED BY</th> <th>DATE</th> </tr> <tr> <td>MKIPPER</td> <td>2014/08/05</td> </tr> <tr> <th>APPROVED BY</th> <th>DATE</th> </tr> <tr> <td>FSMITH</td> <td>2014/08/14</td> </tr> </tbody> </table>	DRAWN BY	DATE	JDFOX	2014/08/05	CHECKED BY	DATE	MKIPPER	2014/08/05	APPROVED BY	DATE	FSMITH	2014/08/14	TITLE			
			mm	INCH																																		
		4 PLACES	± .010	± .0004																																		
3 PLACES	± .010	± .0004																																				
2 PLACES	± 0.25	± .010																																				
1 PLACE	± 0.35	± .014																																				
0 PLACE	± .010	± .0004																																				
DRAWN BY	DATE																																					
JDFOX	2014/08/05																																					
CHECKED BY	DATE																																					
MKIPPER	2014/08/05																																					
APPROVED BY	DATE																																					
FSMITH	2014/08/14																																					
ANGULAR ±1/2° DRAFT WHERE APPLICABLE MUST REMAIN WITHIN DIMENSIONS			MATERIAL NO. SEE CHART	DOCUMENT NO. SD-1625-15*	SHEET NO. 2 OF 3																																	
THIS DRAWING CONTAINS INFORMATION THAT IS PROPRIETARY TO MOLEX INCORPORATED AND SHOULD NOT BE USED WITHOUT WRITTEN PERMISSION																																						

PLUG	
PART NO.	ENG. NO.
03-06-2151	1625-15P
03-06-7155	1625-15P IBN
03-06-7152	1625-15P IBK
03-06-2152	1625-15P I
03-06-7151	1625-15PBK
03-06-7153	1625-15PBN
03-06-7154	1625-15PBU

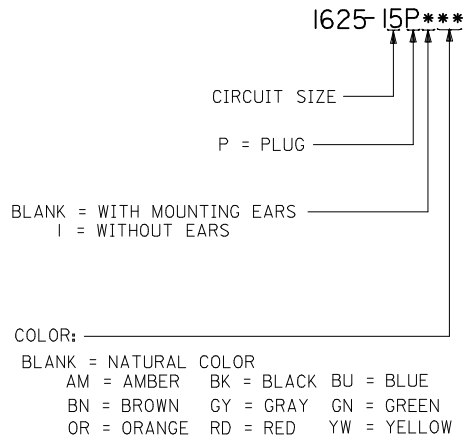
RECEPTACLE	
PART NO.	ENG. NO.
03-06-1152	1625-15R I
03-06-6152	1625-15R IBK
03-06-6155	1625-15R2
NOT TOOLED	1625-15R2BK

RECEPTACLE LEGEND:

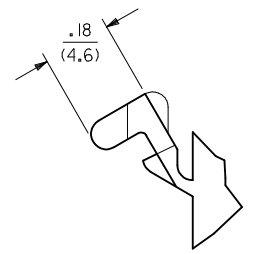
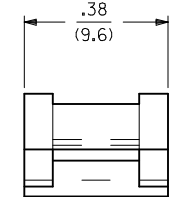
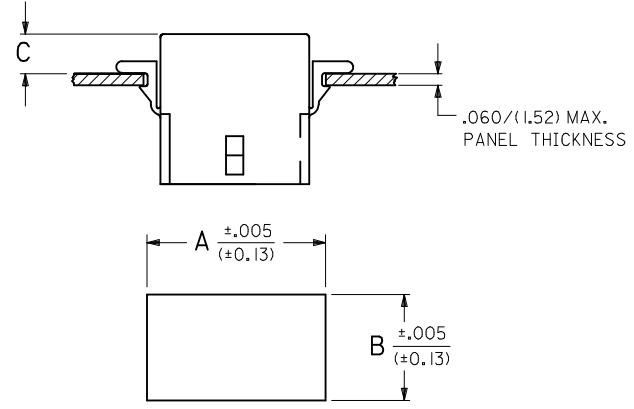


DETAIL 1
STANDARD MOUNTING EAR
SCALE 4:1

PLUG LEGEND:



COLOR: _____
 BLANK = NATURAL COLOR
 AM = AMBER BK = BLACK BU = BLUE
 BN = BROWN GY = GRAY GN = GREEN
 OR = ORANGE RD = RED YW = YELLOW



DETAIL 2
.062/(1.57)PREBENT MOUNTING EAR
(SCALE 4:1)

RECOMMENDED HOLE PATTERN

RECEP.	.930 (23.62)	.569 (14.45)		.22 (5.6)
PLUG	.1032 (26.21)	.620 (15.75)	.20 (5.1)	.21 (5.3)
PART	DIM. A	DIM. B	DIM. C (STANDARD EAR)	DIM. C (PREBENT EAR)

NOTES:

1. MATERIAL: NYLON TYPE 6/6, UL94V-2, COLOR: SEE LEGEND
2. FINISH: NONE
3. THIS PART COMPLIES WITH MOLEX PRODUCT SPEC. PS-02-06.
4. PACKAGING SPECIFICATION: PK-1625-003.
5. CIRCUIT I.D. NUMBERS ON HOUSING APPEAR ON PART FROM TOOLS BUILT AFTER 1/15/94.
6. THIS HOUSING FOR USE WITH .062/(1.57) DIA. TERMINALS.
7. WHERE DENOTED IN CHART, TOOLS ARE BUILT WITH PREBENT MOUNTING EARS PER DETAIL 2 AND SUPERSEDE ALL TOOLS PREVIOUSLY BUILT WITH THE STANDARD MOUNTING EARS.
8. PARTS CONFORM TO CLASS B REQUIREMENTS OF COSMETIC SPECIFICATION PS-45499-002.

SEE SHEET 1 EC NO: UCP2015-0466 DRWN: JDFOX 2014/08/05 CHKD: MKIPPER 2014/08/05 APPR: FSMITH 2014/08/14 Q3	DESCRIPTION QUALITY SYMBOLS 	GENERAL TOLERANCES (UNLESS SPECIFIED)		DIMENSION STYLE IN/MM	SCALE 2:1	DESIGN UNITS INCH	THIRD ANGLE PROJECTION																			
		<table border="1"> <thead> <tr> <th></th> <th>mm</th> <th>INCH</th> </tr> </thead> <tbody> <tr> <td>4 PLACES</td> <td>± .---</td> <td>± .---</td> </tr> <tr> <td>3 PLACES</td> <td>± .---</td> <td>± .010</td> </tr> <tr> <td>2 PLACES</td> <td>± 0.25</td> <td>± .014</td> </tr> <tr> <td>1 PLACE</td> <td>± 0.35</td> <td>± .---</td> </tr> <tr> <td>0 PLACE</td> <td>± .---</td> <td>± .---</td> </tr> </tbody> </table>			mm	INCH	4 PLACES	± .---	± .---	3 PLACES	± .---	± .010	2 PLACES	± 0.25	± .014	1 PLACE	± 0.35	± .---	0 PLACE	± .---	± .---	DRAWN BY JDFOX	DATE 2014/08/05	TITLE .062 HOUSING, PLUG AND RECEPTACLE, 15 CIRCUIT, .145 CENTERS		
			mm	INCH																						
		4 PLACES	± .---	± .---																						
3 PLACES	± .---	± .010																								
2 PLACES	± 0.25	± .014																								
1 PLACE	± 0.35	± .---																								
0 PLACE	± .---	± .---																								
ANGULAR ±1/2°		APPROVED BY FSMITH	DATE 2014/08/14	molex																						
DRAFT WHERE APPLICABLE MUST REMAIN WITHIN DIMENSIONS		MATERIAL NO. SEE CHART		DOCUMENT NO. SD-1625-15*	SHEET NO. 3 OF 3																					

THIS DRAWING CONTAINS INFORMATION THAT IS PROPRIETARY TO MOLEX INCORPORATED AND SHOULD NOT BE USED WITHOUT WRITTEN PERMISSION