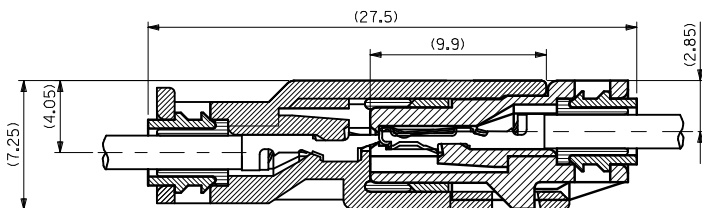
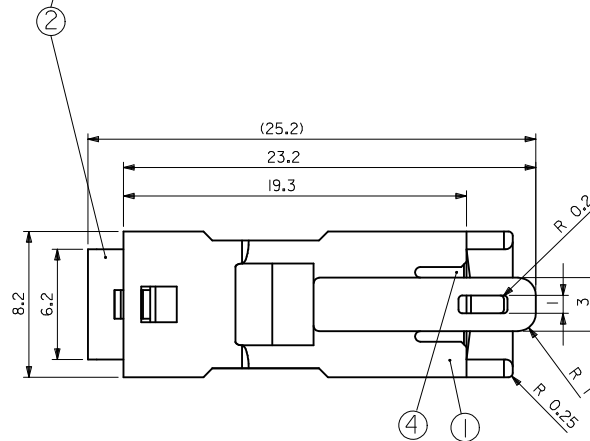
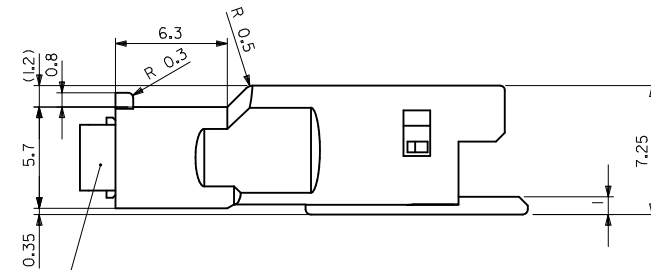
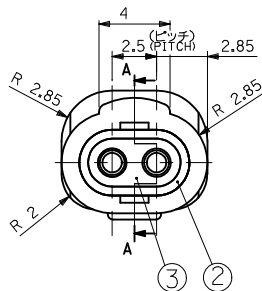


断面A-A(端子装着状態図)
SECT.A-A(TERM.ASSEMBLY DRAWING)



嵌合状態図
FULLY MATED CONDITION

注記
NOTE

- 適合端子 : 50147-8*00
APPLICABLE TERMINAL : 50147-8*00
- 嵌合相手 : 52213-021*
MATES WITH : 52213-021*
- 製品仕様書 : PS-52213-003
PRODUCT SPECIFICATION : PS-52213-003
- 取扱説明書 : AS-52213-001
APPLICATION SPECIFICATION : AS-52213-001

黒 BLACK	52266-0211	2
ハウジングの色 HSG COLOR	製品番号 MATERIAL NO.	極数 No. OF CT.

シリコンム SILICONE	黄 YELLOW	SEAL	⑤
ポリエステル (15%G.F.) POLYESTER (15%G.F.)	黒 BLACK	SEAL STOPPER	④
シリコンム SILICONE	黄 YELLOW	WIRE END SEAL	③
ポリエステル (15%G.F.) POLYESTER (15%G.F.)	黒 BLACK	CAP	②
ポリエステル (15%G.F.) POLYESTER (15%G.F.)	表参照 SEE CHART	PLUG HOUSING	①
材料 MATERIAL	色 COLOR	名称 TITLE	

構成部品
COMPONENTS

REVISED EC NO: JTR2012-0084 2012/02/29 DRAWN:SANDO 2012/03/02 CHKD:SANDO APPR:MIYAMOTO 2012/03/16	DESCRIPTION F1	GENERAL TOLERANCES (UNLESS SPECIFIED)	DIMENSION STYLE MM ONLY	SCALE 5:1	DESIGN UNITS METRIC	THIRD ANGLE PROJECTION
		10 UNDER ±0.2 10 OVER 30 UNDER ±0.25 30 OVER ±0.3	DRAWN BY Y. ASHIZAWA DATE 1990/04/29	TITLE 2.5 MINI WATERPROOF CONN PLUG HSG ASSY (2 CKT.)	MOLEX INCORPORATED	
ANGULAR ±3 °		DRAFT WHERE APPLICABLE MUST REMAIN WITHIN DIMENSIONS	APPROVED BY MENOMOTO DATE 1994/03/02	MATERIAL NO.	DOCUMENT NO. SD-52266-003	SHEET NO. 1 OF 1
SIZE A2 THIS DRAWING CONTAINS INFORMATION THAT IS PROPRIETARY TO MOLEX INCORPORATED AND SHOULD NOT BE USED WITHOUT WRITTEN PERMISSION						