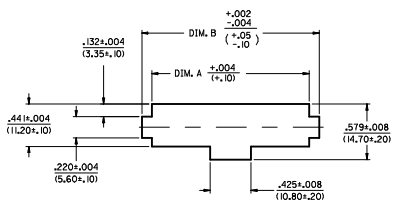
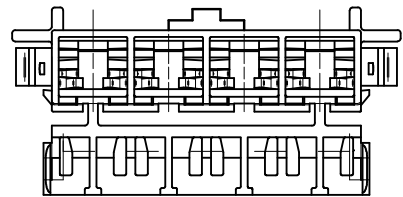
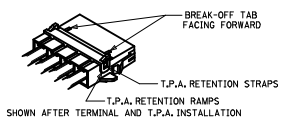
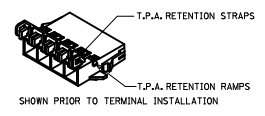
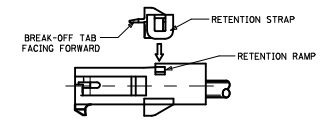
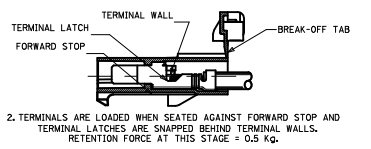
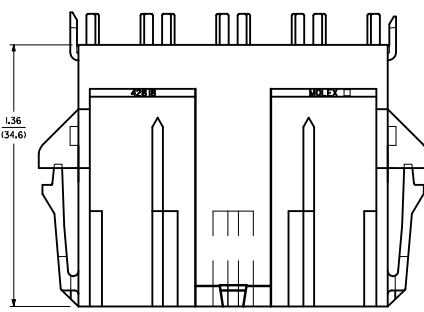
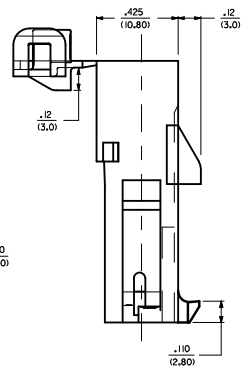
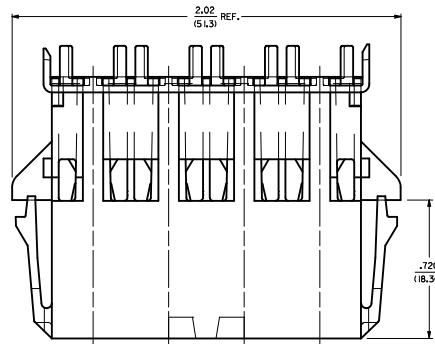
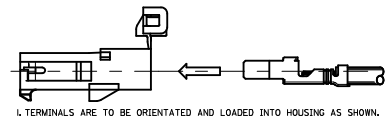


ITEM NUMBER	CIRCUIT SIZE
428 IB-0212	2
428 IB-0312	3
428 IB-0412	4
428 IB-0512	5
428 IB-0612	6

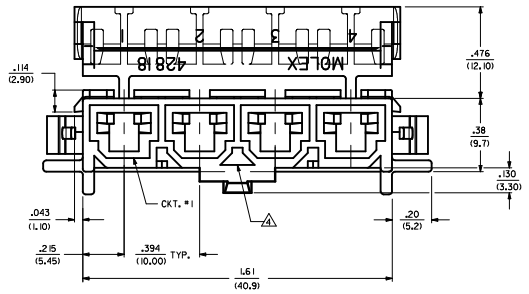
LEGEND:
 428 IB - - - - 2
 CIRCUIT SIZE (02-06)
 MOUNTING EAR OPTION
 1 = WITH MOUNT. EARS
 2 = W/O MOUNT. EARS
 T.P.A. OPTION
 2 = WITH T.P.A.



RECOMMENDED PANEL CUT-OUT DETAIL
 (PANEL THICKNESS .071(1.80) MAX.)



- NOTES:
- 1) MATERIAL:
 1 = POLYESTER, PBT, UL, 94V-0
 COLOR MOLDED BLACK.
 - 2) PART IS FOR USE WITH MALE CRIMP TERMINAL *428IT.
 - 3) PART IS DESIGNED IN METRIC.
 - 4) NO CORE-OUT UNDER RAMP ON 3 AND 5 CIRCUIT PARTS.
 - 5) PART MATES WITH MINI-FIT SR, RECEPTACLE 42816-***2.
 - 6) ITEM NUMBERS THAT ARE PRECEDED BY AN "X" IN THE CHART ARE NOT AVAILABLE.
 - 7) DUE TO THE BREAKAWAY DESIGN OF THE T.P.A. COVER, A FEW MAY HAVE PREMATURELY SEPARATED FROM THEIR HOUSINGS DURING SHIPMENT. IF A HOUSING IS MISSING A T.P.A. COVER, IT CAN BE FOUND IN THE SHIPPING CONTAINER.
 - 8) EACH WIRE MUST BE DRESSED SUCH THAT THE TERMINAL MAINTAINS ITS FREE FLOAT WITHIN THE HOUSING. SEE CHART FOR RECOMMENDED CABLE TIE PLACEMENT.
 - 9) FOR PACKAGING INFORMATION SEE PK-428IB-002



*** THIS PRODUCT MUST NEVER BE USED WITHOUT THE T.P.A. ***

DIM. C	DIM. A	DIM. B	CIRCUIT SIZE
12.7	.854 (21.70)	1.083 (27.50)	2
15.1	1.248 (31.70)	1.476 (37.50)	3
25.4	1.642 (41.70)	1.870 (47.50)	4
31.7	2.036 (51.70)	2.264 (57.50)	5
38.1	2.429 (61.70)	2.657 (67.50)	6

REVISE PKG NOTE 9
 EC NO. UCP2012-3608
 DRAWING NO. 201105/04
 APPROVED BY: [Signature]
 DATE: 2012/05/26

QUALITY SYMBOLS	GENERAL TOLERANCES (UNLESS SPECIFIED)	DIMENSION STYLE	SCALE	DESIGN UNITS	THIRD ANGLE PROJECTION
▽=0 ▽=0	mm INCH	IN/MM	1:1	METRIC	☉
	4 PLACES ±.010 ±.024	DRAWN BY	DATE	TITLE	
	3 PLACES ±.010 ±.024	GEP	1/3/96	PLUG HOUSING, BUILT-IN TPA, 10MM CENTERS	
	2 PLACES ±.025 ±.024	CHECKED BY	DATE	MINIFIT SR. SERIES	
	1 PLACE ±.060 ±.024	RJF	1/3/96		
	ANGULAR ±1/2°	APPROVED BY	DATE	MOLEX INCORPORATED	
		RJF	1/3/96		
		MATERIAL NO.	DOCUMENT NO.		SHEET NO.
			SD-42818-***2		1 OF 1

DRAFT WHERE APPLICABLE MUST REMAIN WITHIN DIMENSIONS

SEE CHART
 THIS DRAWING CONTAINS INFORMATION THAT IS PROPRIETARY TO MOLEX INCORPORATED AND SHOULD NOT BE USED WITHOUT WRITTEN PERMISSION