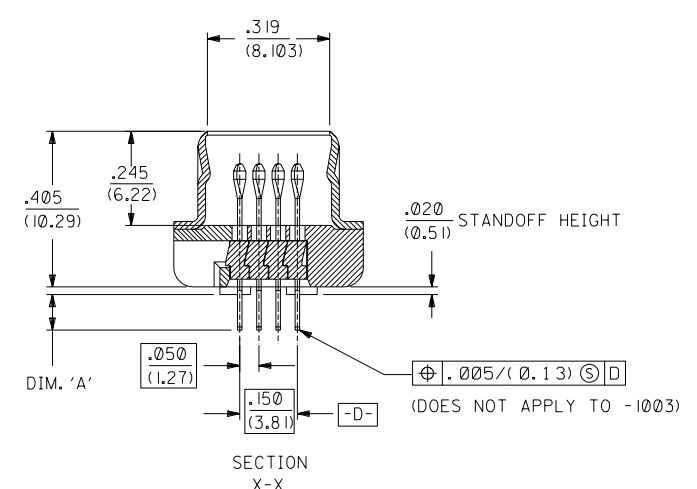
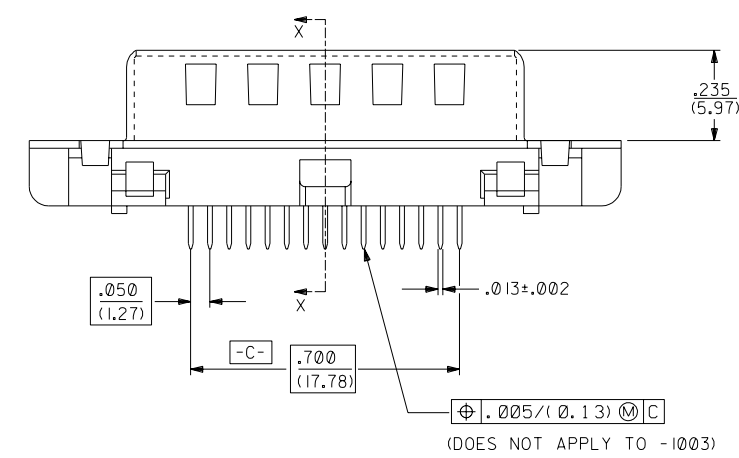
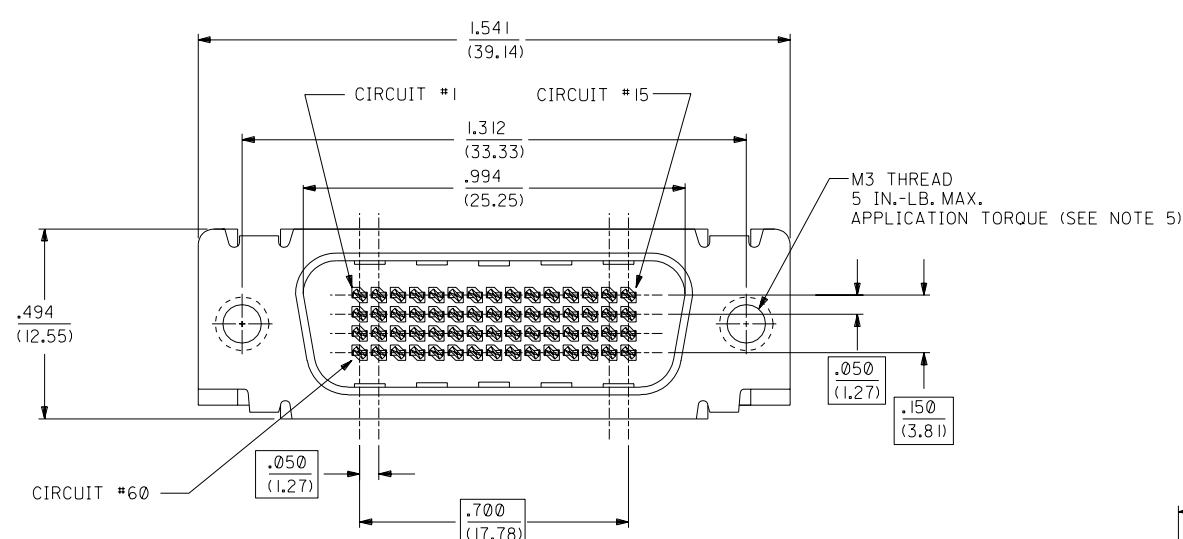


70929	4	3	2	1
ENGINEERING NUMBER	ORDERING NUMBER	DIM. 'A'	PACKAGING SPEC.	
A-70929-1001	15-92-2251	.092±.012 (2.34±0.30)	PK-70873-0226	
A-70929-1003	70929-1003	.570±.012 (14.48±0.30)	PK-70873-640	



NOTES:

1) MATERIALS:
 HOUSING: GLASS FILLED LCP (LIQUID CRYSTAL POLYMER), UL 94V-0, COLOR: BLACK.
 MOLDED STICK: GLASS FILLED LCP (LIQUID CRYSTAL POLYMER), UL 94V-0, COLOR: BLACK.
 MALE TERMINAL: PHOSPHOR BRONZE
 OUTER SHELL: DEEP DRAWN STEEL.

2) PLATING :
 TERMINAL: .000030/(0.000762) MINIMUM GOLD IN SELECTIVE AREA;
 .000100/(0.00254) MINIMUM TIN IN SELECTIVE AREA;
 OVER NICKEL UNDERPLATE OVERALL.

OUTER SHELL: .000100/(0.00254) MINIMUM BRIGHT NICKEL OVER COPPER FLASH (OPTIONAL).

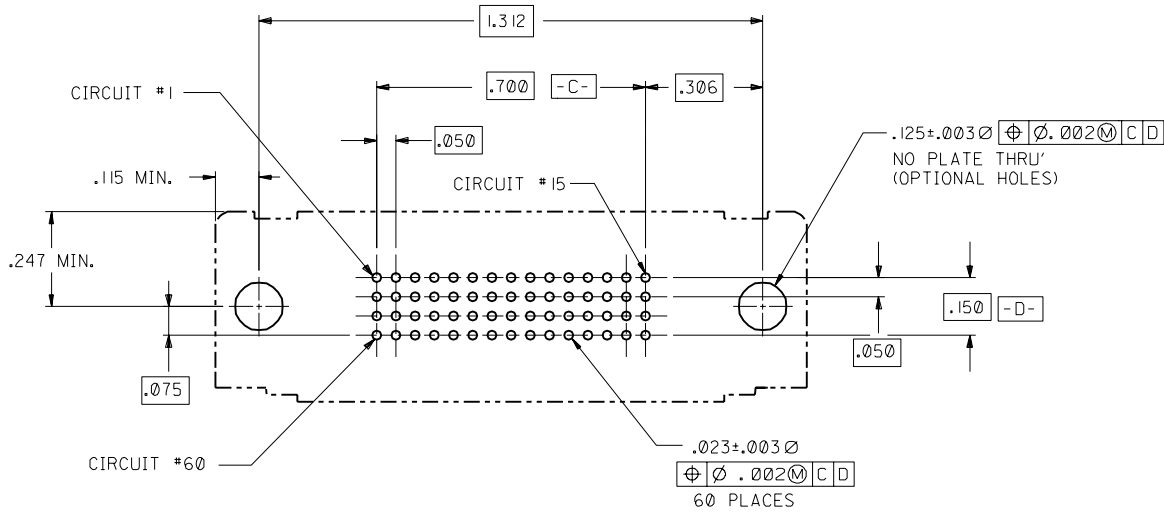
NOTE FOR LEAD FREE CONVERSION:
 THE PRIMARY SHIPPING CARTON WILL BE LABELED "COMPLIANT TO ROHS DIRECTIVE 2002/95/EC AND ELV ANNEX II OF DIRECTIVE 2000/53/EC". CARTONS WITHOUT THIS LABEL MAY CONTAIN PRODUCT WITH LEAD.

- 3) CONFORMS TO PRODUCT SPECIFICATION PS-70928.
- 4) PARTS TO BE PACKAGED PER CHART.
- 5) THREAD GAUGE MAY REQUIRE UP TO 1 IN.-LB. OF TORQUE DURING GAUGING PROCESS.

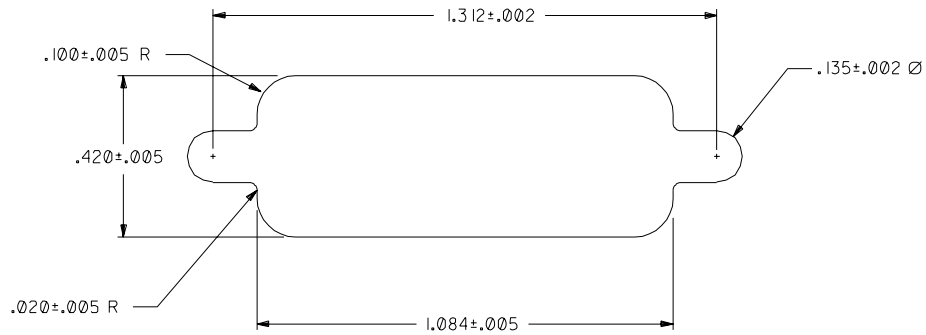
DIMENSIONS SHOWN (METRIC) INCH UNLESS OTHERWISE SPECIFIED TOLERANCES: ANGULAR ± 1/2°		▽ = 0 ▼ = 0 REVISE ONLY ON CAD SYSTEM	
3 PLACE ± INCH METRIC		TITLE .050" PITCH LFH 60 CKT VERTICAL D-SUB SALES ASSY MALE	
2 PLACE ± INCH METRIC		MOLEX INCORPORATED SHEET NO. DATE LITSE,ILL. 60532 U.S.A. 1 OF 2 01/21/92	
1 PLACE --- ± INCH METRIC		PART NO. DRWG. NO. SEE CHART SDA-70929-1001	
DRAFT WHERE APPLICABLE MUST REMAIN WITHIN DIMENSIONS		THIS DRAWING CONTAINS INFORMATION THAT IS PROPRIETARY TO MOLEX INC. AND SHOULD NOT BE USED WITHOUT WRITTEN PERMISSION.	
DRWG. BY: MOS	CHK'D. BY: CAB	FILE NAME: 570929X2	DIV. SIZE: CD C
APP'D. BY: CAB	SCALE: 4: 1		
LTR. REVISIONS	LTR. REVISIONS		

70929

MFG. SH. REV.



RECOMMENDED P.C.B. LAYOUT
COMPONENT SIDE



RECOMMENDED PANEL CUT-OUT

LTR.	REVISIONS	LTR.	REVISIONS
		D	SEE SHEET 1
		C1	SEE SHEET 1

DIMENSIONS SHOWN (METRIC) INCH	
UNLESS OTHERWISE SPECIFIED TOLERANCES: ANGULAR ± 1/2°	
3 PLACE ±	---
2 PLACE ±	±
1 PLACE ---	±
DRAFT WHERE APPLICABLE MUST REMAIN WITHIN DIMENSIONS	
DRWG. BY: MOS	CHK'D. BY: CAB
APP'D. BY: CAB	SCALE: 4: 1

MOLEX INCORPORATED 1515 E. ILL. U.S.A. 60532		SHEET NO. 2 DATE 01/21/92
PART NO. 15-92-2251 FILE NAME S70929X2A		DRWG. NO. SDA-70929-1001 DIV. CD SIZE C
THIS DRAWING CONTAINS INFORMATION THAT IS PROPRIETARY TO MOLEX INC. AND SHOULD NOT BE USED WITHOUT WRITTEN PERMISSION.		

70929

MFG. SH. REV.