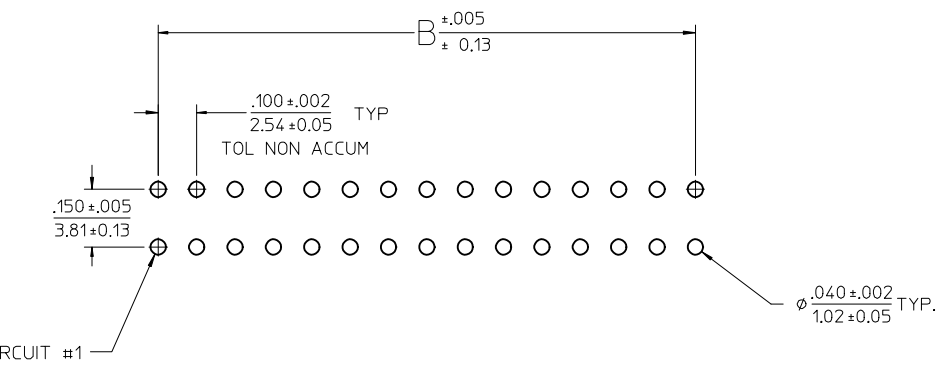
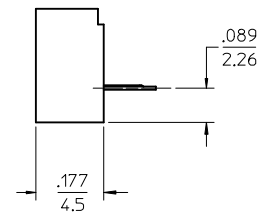
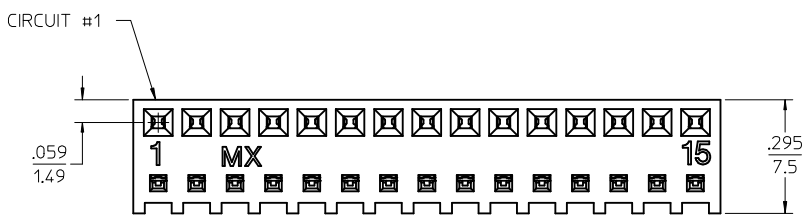


| CKTS | DIM A | DIM B |
|------|-------|-------|
| 2 | .230 | .100 |
| | 5.84 | 2.54 |
| 3 | .330 | .200 |
| | 8.38 | 5.08 |
| 4 | .430 | .300 |
| | 10.92 | 7.62 |
| 5 | .530 | .400 |
| | 13.46 | 10.16 |
| 6 | .630 | .500 |
| | 16.00 | 12.70 |
| 7 | .730 | .600 |
| | 18.54 | 15.24 |
| 8 | .830 | .700 |
| | 21.08 | 17.78 |
| 9 | .930 | .800 |
| | 23.62 | 20.32 |
| 10 | 1.030 | .900 |
| | 26.16 | 22.86 |
| 11 | 1.130 | 1.000 |
| | 28.70 | 25.40 |
| 12 | 1.230 | 1.100 |
| | 31.24 | 27.94 |
| 13 | 1.330 | 1.200 |
| | 33.78 | 30.48 |
| 14 | 1.430 | 1.300 |
| | 36.32 | 33.02 |
| 15 | 1.530 | 1.400 |
| | 38.86 | 35.56 |
| 16 | 1.630 | 1.500 |
| | 41.40 | 38.10 |



PCB LAYOUT : COMPONENT SIDE SHOWN
RECOMMENDED PCB THK: .062/1.57

NOTES :

- MATERIAL -
HOUSING : HIGH TEMP NYLON, GLASS-FILLED, UL94V-0, COLOR - BLACK
TERMINAL : MODIFIED TIN/BRASS ALLOY
- FINISH - (SEE CHART)
A-TIN: .000200/(0.00508) MINIMUM
B-SELECT GOLD: .000015/(0.00038) MIN., SELECT TIN: .000100/(0.00254) MIN., OVER NICKEL
C-SELECT GOLD: .000030/(0.00076) MIN., SELECT TIN: .000100/(0.00254) MIN., OVER NICKEL
- PRODUCT SPECIFICATION : PS-44812-001
- PACKAGING SPECIFICATION : TRAY PACK PER PK-44812-001
- 15 CIRCUIT PART SHOWN SEE SHEET 2 FOR OTHER CIRCUIT SIZES.
- THIS PART CONFORMS TO CLASS B REQUIREMENTS OF COSMETIC SPECIFICATION PS-45499-002.

| | | | | | | |
|--|-----------------|--|---------------------|---|--------------|------------------------|
| PCB LAYOUT EC NO: UCP2013-1814 DRW:MKIPPER 2012/11/06 CHKD:JBELL 2012/11/06 APPR:FSMITH 2012/11/20 | QUALITY SYMBOLS | GENERAL TOLERANCES (UNLESS SPECIFIED) | DIMENSION STYLE | SCALE | DESIGN UNITS | THIRD ANGLE PROJECTION |
| | ▽=0 | mm INCH | IN/MM | 4:1 | INCH | |
| | ▽=0 | 4 PLACES ± --- ± --- | DRAWN BY DATE | TITLE | | |
| | ▽=0 | 3 PLACES ± --- ± .010 | CHECKED BY DATE | KK 100 PCB CONN ASSY LOW PROFILE | | |
| | | 2 PLACES ± 0.25 ± .015 | MUELLER 2001/09/22 | molex | | |
| | | 1 PLACE ± 0.38 ± --- | MUELLER 2001/09/23 | DOCUMENT NO. | | |
| | | 0 PLACE ± ± | APPROVED BY DATE | SD-44812-001 | | |
| | | | MARGULIS 2001/09/24 | SHEET NO. | | |
| | | ANGULAR ±1/2° | MATERIAL NO. | 1 OF 2 | | |
| | | DRAFT WHERE APPLICABLE MUST REMAIN WITHIN DIMENSIONS | SEE CHART | THIS DRAWING CONTAINS INFORMATION THAT IS PROPRIETARY TO MOLEX INCORPORATED AND SHOULD NOT BE USED WITHOUT WRITTEN PERMISSION | | |

| FINISH: A (TIN) | |
|-----------------|--------------|
| CKTS | MATERIAL NO. |
| 2 | 44812-0002 |
| 3 | 44812-0003 |
| 4 | 44812-0004 |
| 5 | 44812-0005 |
| 6 | 44812-0006 |
| 7 | 44812-0007 |
| 8 | 44812-0008 |
| 9 | 44812-0009 |
| 10 | 44812-0010 |
| 11 | 44812-0011 |
| 12 | 44812-0012 |
| 13 | 44812-0013 |
| 14 | 44812-0014 |
| 15 | 44812-0015 |
| 16 | 44812-0016 |

| FINISH: B (15 GOLD) | |
|---------------------|--------------|
| CKTS | MATERIAL NO. |
| 2 | 44812-0020 |
| 3 | 44812-0021 |
| 4 | 44812-0022 |
| 5 | 44812-0023 |
| 6 | 44812-0024 |
| 7 | 44812-0025 |
| 8 | 44812-0026 |
| 9 | 44812-0027 |
| 10 | 44812-0028 |
| 11 | 44812-0029 |
| 12 | 44812-0030 |
| 13 | 44812-0031 |
| 14 | 44812-0032 |
| 15 | 44812-0033 |
| 16 | 44812-0034 |

| FINISH: C (30 GOLD) | |
|---------------------|--------------|
| CKTS | MATERIAL NO. |
| 2 | 44812-0040 |
| 3 | 44812-0041 |
| 4 | 44812-0042 |
| 5 | 44812-0043 |
| 6 | 44812-0044 |
| 7 | 44812-0045 |
| 8 | 44812-0046 |
| 9 | 44812-0047 |
| 10 | 44812-0048 |
| 11 | 44812-0049 |
| 12 | 44812-0050 |
| 13 | 44812-0051 |
| 14 | 44812-0052 |
| 15 | 44812-0053 |
| 16 | 44812-0054 |

| | | | | | | | |
|--|--------------------|---|---|--|-------|--------------|--|
| SEE SHEET 1 EC NO: UCP2013-1814 DRWN:MKIPPER 2012/11/06 CHKD:JBELL 2012/11/06 APPR:FSMITH 2012/11/20 | DESCRIPTION REV | QUALITY SYMBOLS | GENERAL TOLERANCES (UNLESS SPECIFIED) | DIMENSION STYLE | SCALE | DESIGN UNITS | THIRD ANGLE PROJECTION |
| | | ▽=0 ▽=0 ▽=0 | mm INCH 4 PLACES ± --- ± --- 3 PLACES ± --- ± .010 2 PLACES ± 0.25 ± .015 1 PLACE ± 0.38 ± --- 0 PLACE ± ± | IN/MM DRAWN BY DATE MUELLER 2001/09/22 CHECKED BY DATE MUELLER 2001/09/23 APPROVED BY DATE MARGULIS 2001/09/24 | 1:1 | INCH | KK 100 PCB CONN ASSY LOW PROFILE molex DOCUMENT NO. SD-44812-001 SHEET NO. 2 OF 2 |
| | | | ANGULAR ±1/2° | | | | |
| | | | DRAFT WHERE APPLICABLE MUST REMAIN WITHIN DIMENSIONS | SIZE | | | |
| | | THIS DRAWING CONTAINS INFORMATION THAT IS PROPRIETARY TO MOLEX INCORPORATED AND SHOULD NOT BE USED WITHOUT WRITTEN PERMISSION | | | | | |