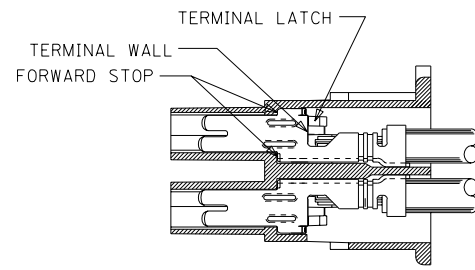
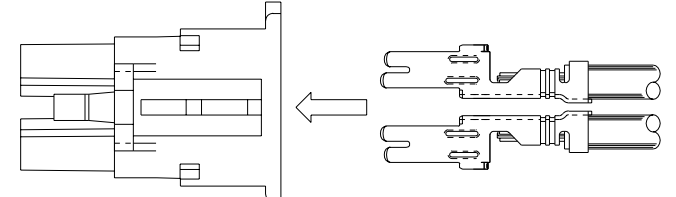
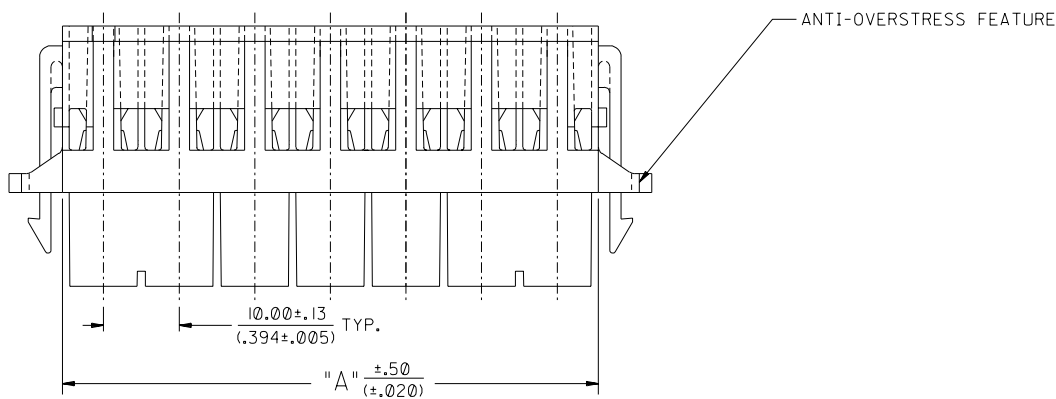


MATERIAL NUMBER	CIRCUITS	DIM. "A"	DIM. "B"	POLARIZING WEBS	
				PRESENT	QTY.
43914-1001	6	30.90/(1.217)	45.70/(1.799)	NO	0
43914-1002	8	40.90/(1.610)	55.70/(2.193)	NO	0
43914-1003	10	50.90/(2.004)	65.70/(2.587)	NO	0
43914-1004	12	60.90/(2.398)	75.70/(2.980)	NO	0
43914-1005	14	70.90/(2.791)	85.70/(3.374)	NO	0
43914-1101	6	30.90/(1.217)	45.70/(1.799)	YES	1
43914-1102	8	40.90/(1.610)	55.70/(2.193)	YES	2
43914-1103	10	50.90/(2.004)	65.70/(2.587)	YES	2
43914-1104	12	60.90/(2.398)	75.70/(2.980)	YES	2
43914-1105	14	70.90/(2.791)	85.70/(3.374)	YES	2

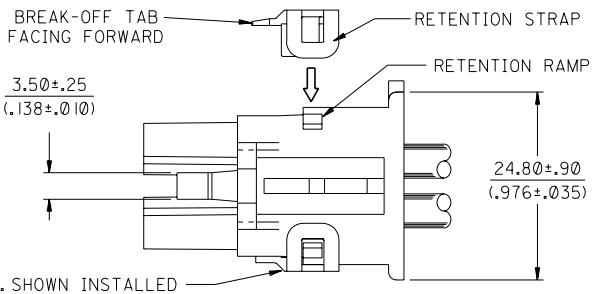
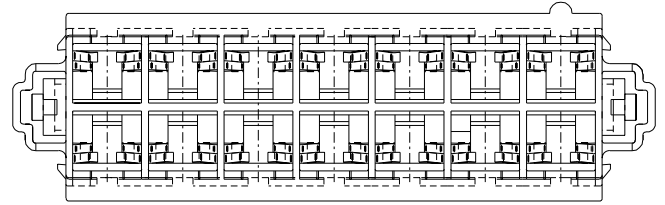
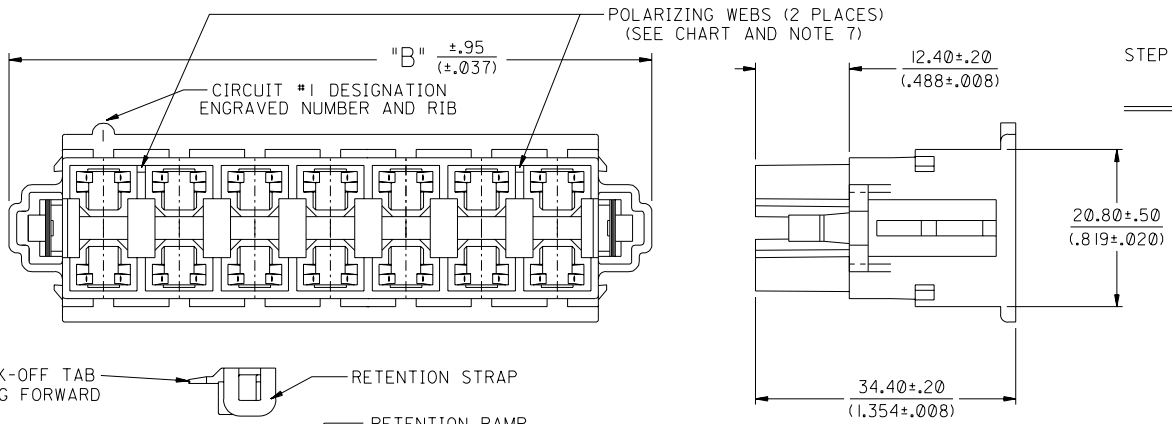
OBSOLETE

NOTES:

1. MATERIAL: POLYESTER, U.L. 94V-0. COLOR: BLACK
2. PRODUCT SPEC.: PS-42815-001
3. USES STANDARD 42815 MINI-FIT SR. FEMALE CRIMP TERMINALS.
4. EACH WIRE MUST BE DRESSED SUCH THAT THE TERMINAL MAINTAINS ITS FREE FLOAT WITHIN THE HOUSING.
5. TPA #43980 MUST ALWAYS BE USED WITH THIS CONNECTOR.
6. PART MATES WITH MOLEX HEADER 43915.
7. POLARIZING WEBS TO BE LOCATED BETWEEN CIRCUITS ON EITHER END OF HOUSING OF THE CIRCUIT I ROW AS SHOWN.
EXCEPTION: THE 6 CIRCUIT HOUSING WILL HAVE A SINGLE WEB ON THE CIRCUIT I END.



STEP 2. TERMINALS ARE LOADED WHEN SEATED AGAINST FORWARD STOP AND TERMINAL LATCHES ARE SNAPPED BEHIND TERMINAL WALLS. RETENTION FORCE AT THIS STAGE = 0.5 Kg.



* THIS PRODUCT MUST NEVER BE USED WITHOUT THE T.P.A *

STEP 3. AFTER TERMINALS ARE LOADED INTO HOUSING, T.P.A. IS TO BE "BROKEN OR CUT" IN HALF, ORIENTATED AND INSTALLED IN THE DIRECTION SHOWN UNTIL THE RETENTION STRAPS SNAP OVER THE RETENTION RAMPS. THIS PRODUCT MUST NEVER BE USED WITHOUT THE INSTALLATION OF THE T.P.A.

ADDED NOTE EC NO. UCR2004-0496 DRWG. COMERC 03/09/12 CHK: COMERC 03/09/12 APPR: COMERC 03/09/12	DESCRIPTION MAJOR CRITICAL	QUALITY SYMBOLS MAJOR CRITICAL	GENERAL TOLERANCES: (UNLESS SPECIFIED) mm INCH 4 PLACES ±0.--- ±.--- 3 PLACES ±0.--- ±.--- 2 PLACES ±0.--- ±.--- 1 PLACE ±0.--- ±.---	SCALE 2:1 DESIGN UNITS <input checked="" type="checkbox"/> mm <input type="checkbox"/> INCH	DRAWN BY & DATE COMERC 97/08/20 CHECKED BY & DATE COMERC 97/08/25 APPROVED BY & DATE FRY 97/08/26	DIMENSIONS: <input checked="" type="checkbox"/> mm <input type="checkbox"/> INCH <input type="checkbox"/> mm ONLY <input type="checkbox"/> INCH ONLY	SHT REV REVISE ON CAD ONLY
		CAD FILENAME DRAFT WHERE APPLICABLE MUST REMAIN WITHIN DIMENSIONS	TITLE: RECEPTACLE HOUSING DUAL ROW 6-14 CIRCUIT (MINI-FIT SR.) MOLEX INCORPORATED	MATERIAL NO. SEE CHART	DRAWING NO. SD-43914-002	SHEET NO. 1 OF 1	SIZE C