

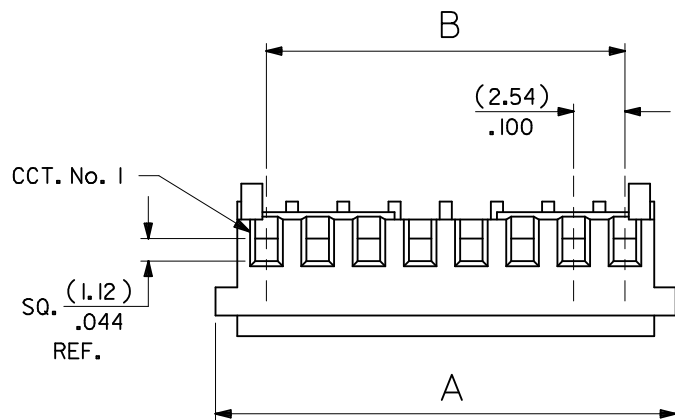
(1.02) .040 (5.08) .200 (1.78) .070

ALL TERMINALS HAVE CAT EAR CONFIGURATION

POLARIZING RIB

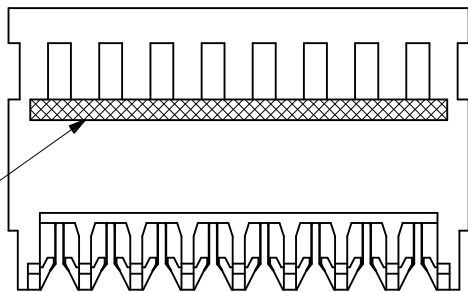
BASE No. A-7720S \* N \* \*  
 VOID LOC' n.  
 TERMINAL DESIGNATION  
 No. OF CCTS.  
HOUSING CONFIGURATION

WITHOUT BACKWALL (FEED-THRU HOUSING) C. WITH RAMP AND POL. RIB



NOTES:

- MATERIAL: HOUSING: NYLON 6/6, UL94V-2, COLOR: NATURAL, TERMINALS: PHOS. BRONZE
- FINISH: SEE CHARTS
- PRODUCT SPECIFICATION: PS-99020-0088
- PACKAGING: PER PK-7720-100
- VOIDS ARE AVAILABLE WITH PIN WINDOWS MOLDED CLOSED.
- THIS ASSEMBLY IS FOR USE WITH (0.64)/.025 SQ. OR ROUND PINS, INSERTION DEPTH (6.10-7.87)/.240-.310
- THIS ASSEMBLY WILL ACCOMMODATE (1.42)/.056 MAX INSULATION DIA.
- COLOR STRIPE ON FULL LENGTH OF RIB DENOTES WIRE GAUGE (SEE CHART)



NO OF CCTS	DIM. A	DIM. B
2	( 7.59 ) / .299	( 2.54 ) / .100
3	( 10.13 ) / .399	( 5.08 ) / .200
4	( 12.67 ) / .499	( 7.62 ) / .300
5	( 15.21 ) / .599	( 10.16 ) / .400
6	( 17.75 ) / .699	( 12.70 ) / .500
7	( 20.29 ) / .799	( 15.24 ) / .600
8	( 22.83 ) / .899	( 17.78 ) / .700
9	( 25.37 ) / .999	( 20.32 ) / .800
10	( 27.91 ) / 1.099	( 22.86 ) / .900
11	( 30.45 ) / 1.199	( 25.40 ) / 1.000
12	( 32.99 ) / 1.299	( 27.94 ) / 1.100
13	( 35.53 ) / 1.399	( 30.48 ) / 1.200
14	( 38.07 ) / 1.499	( 33.02 ) / 1.300
15	( 40.61 ) / 1.599	( 35.56 ) / 1.400
16	( 43.15 ) / 1.699	( 38.10 ) / 1.500
17	( 45.69 ) / 1.799	( 40.64 ) / 1.600
18	( 48.23 ) / 1.899	( 43.18 ) / 1.700
19	( 50.77 ) / 1.999	( 45.72 ) / 1.800
20	( 53.31 ) / 2.099	( 48.26 ) / 1.900
21	( 55.85 ) / 2.199	( 50.80 ) / 2.000
22	( 58.39 ) / 2.299	( 53.34 ) / 2.100
23	( 60.93 ) / 2.399	( 55.88 ) / 2.200
24	( 63.47 ) / 2.499	( 58.42 ) / 2.300
25	( 66.01 ) / 2.599	( 60.96 ) / 2.400
26	( 68.55 ) / 2.699	( 63.50 ) / 2.500
27	( 71.09 ) / 2.799	( 66.04 ) / 2.600
28	( 73.63 ) / 2.899	( 68.58 ) / 2.700

TERMINAL DESIGNATION	COLOR STRIPE	FOR USE WITH WIRE SIZES:
H	GREEN	24 AWG SOLID, STRANDED TINNED, AND STRANDED TOPCOAT 26 AWG STRANDED TOPCOAT
J	BROWN	26 AWG SOLID AND STRANDED TINNED, 28 AWG SOLID, STRANDED TINNED, AND STRANDED TOPCOAT

<b>CHANGE PLATING</b> EC NO: UCP2011-1314 DRWN:WKIPPER 2010/11/16 CHKD:JBELL APPR:FSM/TH 2011/03/09 X REV	QUALITY SYMBOLS ▽=0 ◻=0	GENERAL TOLERANCES (UNLESS SPECIFIED) <table border="1"> <tr> <th></th> <th>mm</th> <th>INCH</th> </tr> <tr> <td>4 PLACES</td> <td>± ---</td> <td>± ---</td> </tr> <tr> <td>3 PLACES</td> <td>± ---</td> <td>± .005</td> </tr> <tr> <td>2 PLACES</td> <td>± 0.13</td> <td>± .010</td> </tr> <tr> <td>1 PLACE</td> <td>± 0.25</td> <td>± ---</td> </tr> </table>		mm	INCH	4 PLACES	± ---	± ---	3 PLACES	± ---	± .005	2 PLACES	± 0.13	± .010	1 PLACE	± 0.25	± ---	DIMENSION STYLE <b>MM/IN</b> DRAWN BY: GCH DATE: 23/12/86 CHECKED BY: D.MORIARTY DATE: 23/12/86 APPROVED BY: J.DENNEHY DATE: 23/12/86 MATERIAL NO.	SCALE: --- DESIGN UNITS: METRIC THIRD ANGLE PROJECTION
		mm	INCH																
4 PLACES	± ---	± ---																	
3 PLACES	± ---	± .005																	
2 PLACES	± 0.13	± .010																	
1 PLACE	± 0.25	± ---																	
DRAFT WHERE APPLICABLE MUST REMAIN WITHIN DIMENSIONS SIZE: <b>A3</b> THIS DRAWING CONTAINS INFORMATION THAT IS PROPRIETARY TO MOLEX INCORPORATED AND SHOULD NOT BE USED WITHOUT WRITTEN PERMISSION	TITLE: KK (2.54)/.100 <b>INSULATION DISPLACEMENT CONNECTOR ASSEMBLY</b> <b>MOLEX INCORPORATED</b> DOCUMENT NO. SDA-7720S-*N* SHEET NO. 1 OF 3																		

PART NO.	ENG. NO.	CCTS.	TERMINAL	I.D. STRIPE	PLTG.
22-50-3025	A-7720S-C 2H	2	41512-H(154)	GREEN	(0.00254)/.000100 MIN. TIN OVER (0.00127)/.000050 MIN. NICKEL
↑ 3035	↑ C 3H	3	↑	↑	
3045	C 4H	4			
3055	C 5H	5			
3065	C 6H	6			
3075	C 7H	7			
3085	C 8H	8			
3095	C 9H	9			
3105	C 10H	10			
3115	C 11H	11			
3125	C 12H	12			
3135	C 13H	13			
3145	C 14H	14			
3155	C 15H	15			
3165	C 16H	16			
3175	C 17H	17			
3185	C 18H	18			
3195	C 19H	19			
3205	C 20H	20			
3215	C 21H	21			
3225	C 22H	22			
3235	C 23H	23			
3245	C 24H	24			
3255	C 25H	25			
3265	C 26H	26			
↓ 3275	↓ C 27H	27	↓	↓	
22-50-3285	A-7720S-C28H	28	41512-H(154)	GREEN	

**NOTE:**

1. 18 - 28 CIRCUITS ARE NON-STANDARD.

<b>CHANGE PLATING</b> EC NO: UCP2011-1314 DRWN:WK/PPER 2010/11/16 CHKD:JBELL APPR:FSM/TH 2011/03/09	QUALITY SYMBOLS	GENERAL TOLERANCES (UNLESS SPECIFIED)	DIMENSION STYLE	SCALE	DESIGN UNITS	THIRD ANGLE PROJECTION	
	▼=0 □=0	mm INCH	MM/IN	---	METRIC		
		4 PLACES ± --- ± ---	DRAWN BY DATE	TITLE			
		3 PLACES ± --- ± ---	CHECKED BY DATE	KK (2.54)/.100 INSULATION DISPLACEMENT CONNECTOR ASSEMBLY			
	2 PLACES ± --- ± ---	APPROVED BY DATE	MOLEX INCORPORATED DOCUMENT NO.				
	1 PLACE ± --- ± ---		SHEET NO. 2 OF 3				
	ANGULAR ± ---°		SEE CHART SDA-7720S-*N*				
		DRAFT WHERE APPLICABLE MUST REMAIN WITHIN DIMENSIONS	THIS DRAWING CONTAINS INFORMATION THAT IS PROPRIETARY TO MOLEX INCORPORATED AND SHOULD NOT BE USED WITHOUT WRITTEN PERMISSION				